

Orleans Complex

CA-SRF-0741

August 23, 2017

Air Operations Map

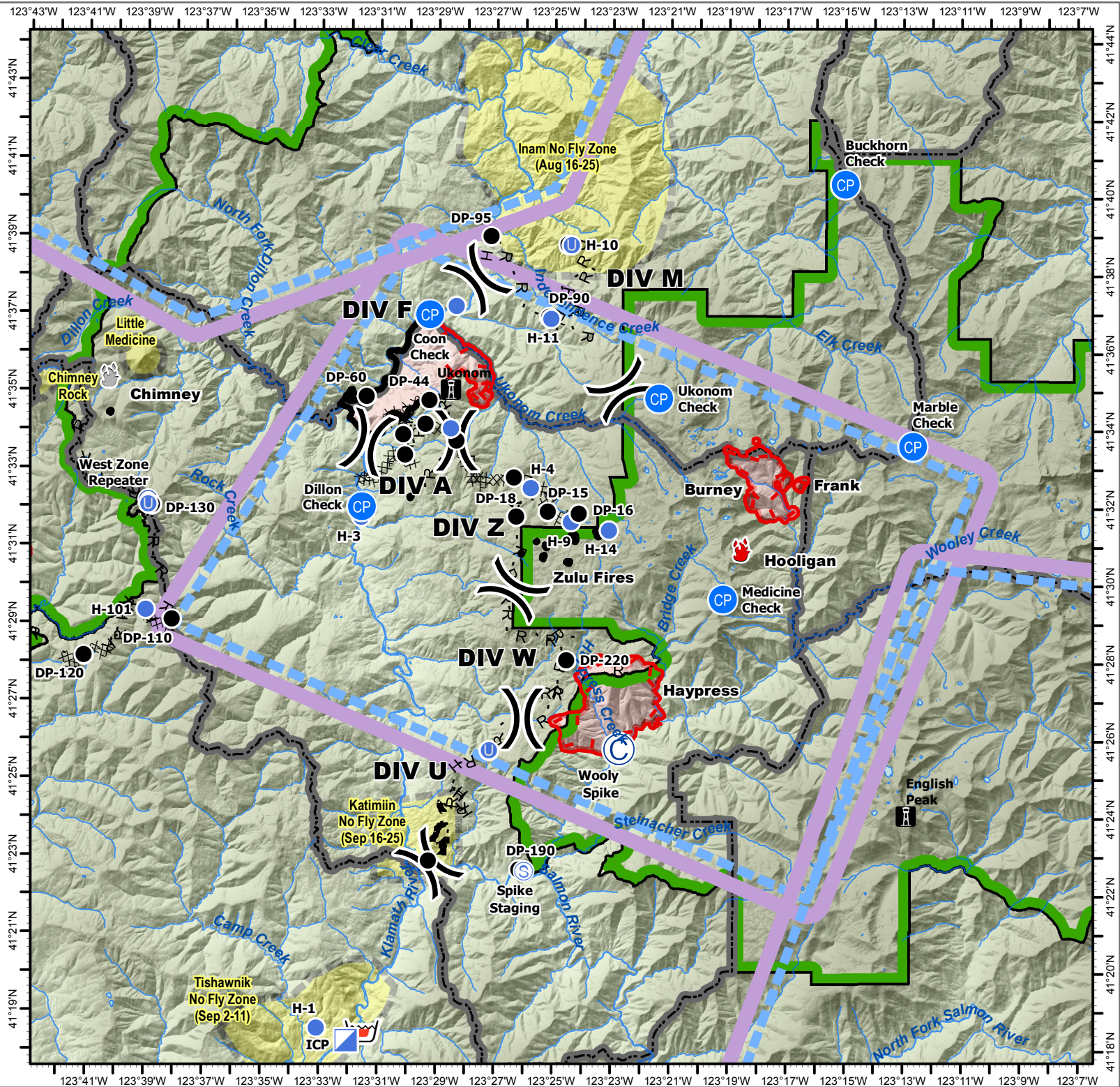
- Division Break
- Fire Location
- Drop Point
- Helispot
- Repeater
- Dip Site
- Check Point
- Initial Point
- Lookout Tower
- Uncontrolled Fire Edge
- Completed Dozer Line
- Completed Line
- Hand Line
- Road as Completed Line
- Planned Secondary Line
- Fire Polygon
- Wilderness
- No Fly Zone



0 0.5 1 2
Miles



NAD83 Zone 10N



Name	Elevation (ft)	Latitude	Longitude
Active Fires:			
Ukonom Fire		41 35.650 N	123 29.285 W
Burney Fire		41 33.056 N	123 17.891 W
Forks Fire		41 30.595 N	123 43.335 W
Little Fire		41 34.434 N	123 40.255 W
Frank Fire		41 32.591 N	123 16.570 W
Zulu 6 Fire		41 31.410 N	123 23.469 W
Hooligan Fire		41 30.938 N	123 18.537 W
Haypress Fire		41 27.083 N	123 22.409 W
Aviation Points:			
Ukonom Dip	792	41 36.110 N	123 30.138 W
H-1	787	41 18.559 N	123 33.183 W
ICP Helispot, HOGE, Type 2, Two-way			
H-3	708	41 31.740 N	123 31.620 W
Ti Bar Helispot, HOGE, Type 2, Two-way			
H-4	4,106	41 32.508 N	123 25.791 W
Type 2			
H-5	3,960	41 34.037 N	123 28.548 W
On Road South of the Lookout, HOGE, Type 3, One-way			
H-7	1,140	41 37.192 N	123 28.374 W
Dust abatement and highway traffic control required prior to use			
H-9	4,931	41.31.627N	123.24.400W
Type 2 OGE One Way In and Out Dust Abatement Required			
H-10	2,947	41 38.780 N	123 24.419 W
Unimproved, Type 3, HOGE, One-way			
H-11	2,687	41 36.895 N	123 25.134 W
H-12	1,312	41 25.715 N	123 22.566 W
Type-2, Type-3 Approved. No Dust Abatement			
H-14	5,500	41 31.423 N	123 23.106 W
Type-3, HOGE, No Dust Abatement			
H-100	2,559	41 28.41 N	123 47.37 W
Type- 2, HOGE, One-way			
H-101	4,206	41 29.33 N	123 39.00 W
Type-3, HOGE, One-way			
H-102	3,459	41 28.41 N	123 44.23 W
Type-2, HOGE, One-way			
Unimproved Landing Site		41 32.053 N	123 38.924 W
Unimproved Landing Site		41 25.733 N	123 27.183 W

Name	Elevation (ft)	Latitude	Longitude
Check Points:			
North IP	5,635	41 46.958 N	123 35.007 W
East IP	3,594	41 44.116 N	123 16.275 W
South IP	6,578	41 23.434 N	123 16.675 W
West IP	1,466	41 30.032 N	123 47.788 W
Oak Check 2500'	1,012	41 43.819 N	123 26.141 W
Buckhorn Check	6,788	41 40.355 N	123 15.016 W
Coon Check	980	41 36.971 N	123 29.294 W
Ukonom Check	6,057	41 34.826 N	123 21.402 W
Pony Check 6000' +	5,056	41 36.697 N	123 34.118 W
Dillon Check	711	41 32.005 N	123 31.607 W
Happy Camp HB	1,211	41 47.528 N	123 33.283 W
Scott Valley HB	2,728	41 33.487 N	122 51.406 W
Carter Check	6,394	41 13.383 N	122 53.968 W
Shelly Fork	4,242	41 30.314 N	123 02.440 W
Tower Check	5,928	41 23.875 N	122 59.760 W
Elk Check	3,008	41 44.766 N	123 22.757 W
Collins Baldy L.O. Check	5,299	41 46.512 N	122 57.084 W
Scott Bar Mt. Check	4,754	41 39.534 N	123 5.730 W
Lower Devils Check	4,940	41 52.584 N	123 12.150 W
Slater Butte Check	4,632	41 51.474 N	123 21.216 W
Marble Check	6,795	41 33.604 N	123 12.669 W
Preston Pk. IP	6,827	41 50.070 N	123 36.756 W
Black + White Mt. IP	5,961	41 57.258 N	123 3.690 W
Avoidance Areas:			
Ike's Falls Centroid		41 23.008 N	123 29.584 W
Chimney Rock Centroid		41 35.263 N	123 42.833 W
Doctor Rock Centroid		41 32.316 N	123 46.698 W
Peak Eight Centroid		41 33.024 N	123 46.570 W
High Point Centroid		41 33.904 N	123 44.621 W
Little Medicine Centroid		41 35.824 N	123 39.153 W
Other Points:			
Launch Site for Unmanned Foxtrot 3		41 52.088 N	123 44.070 W

