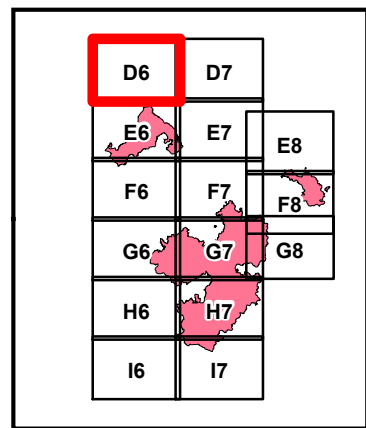
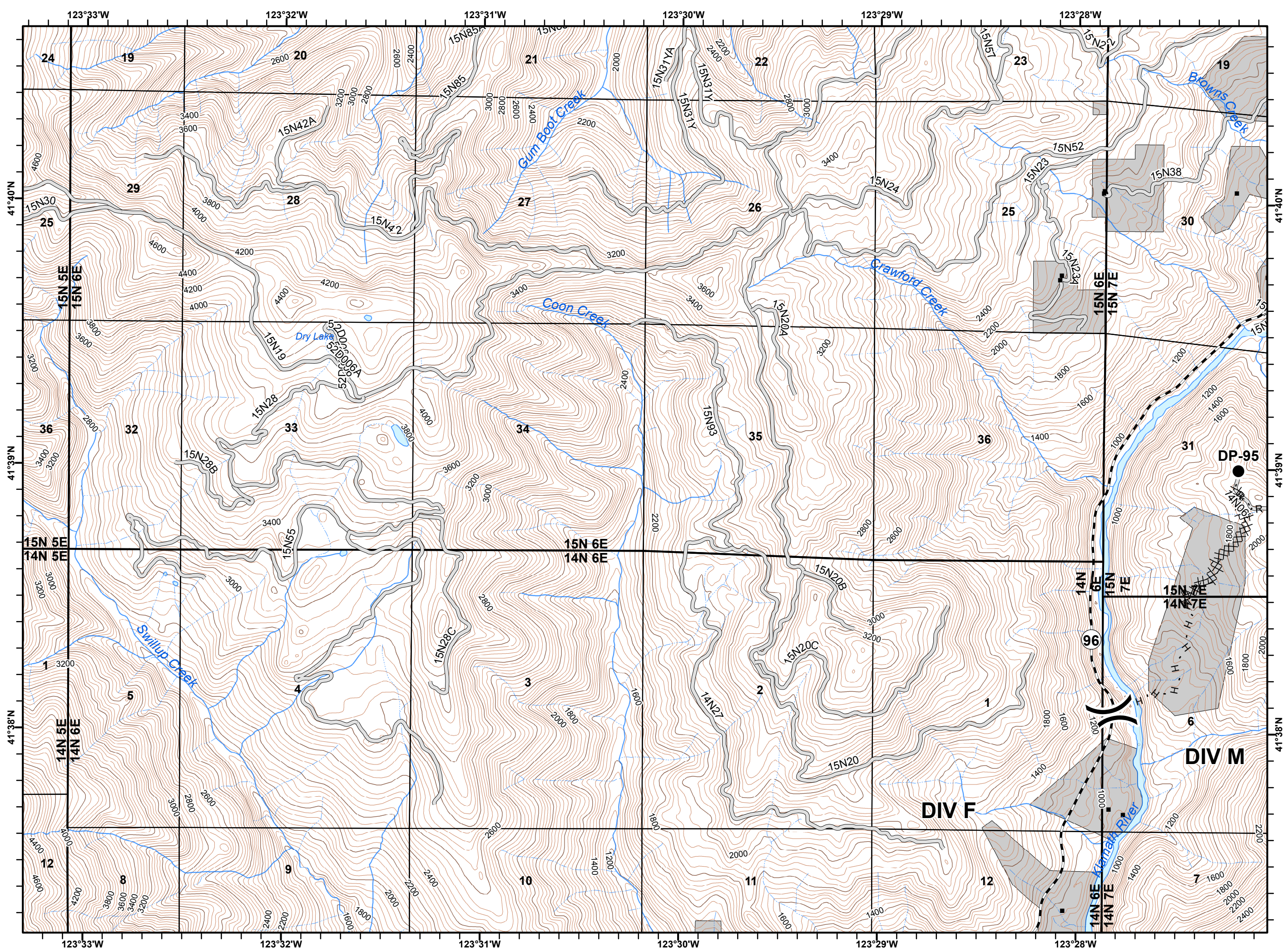
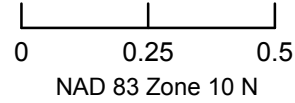
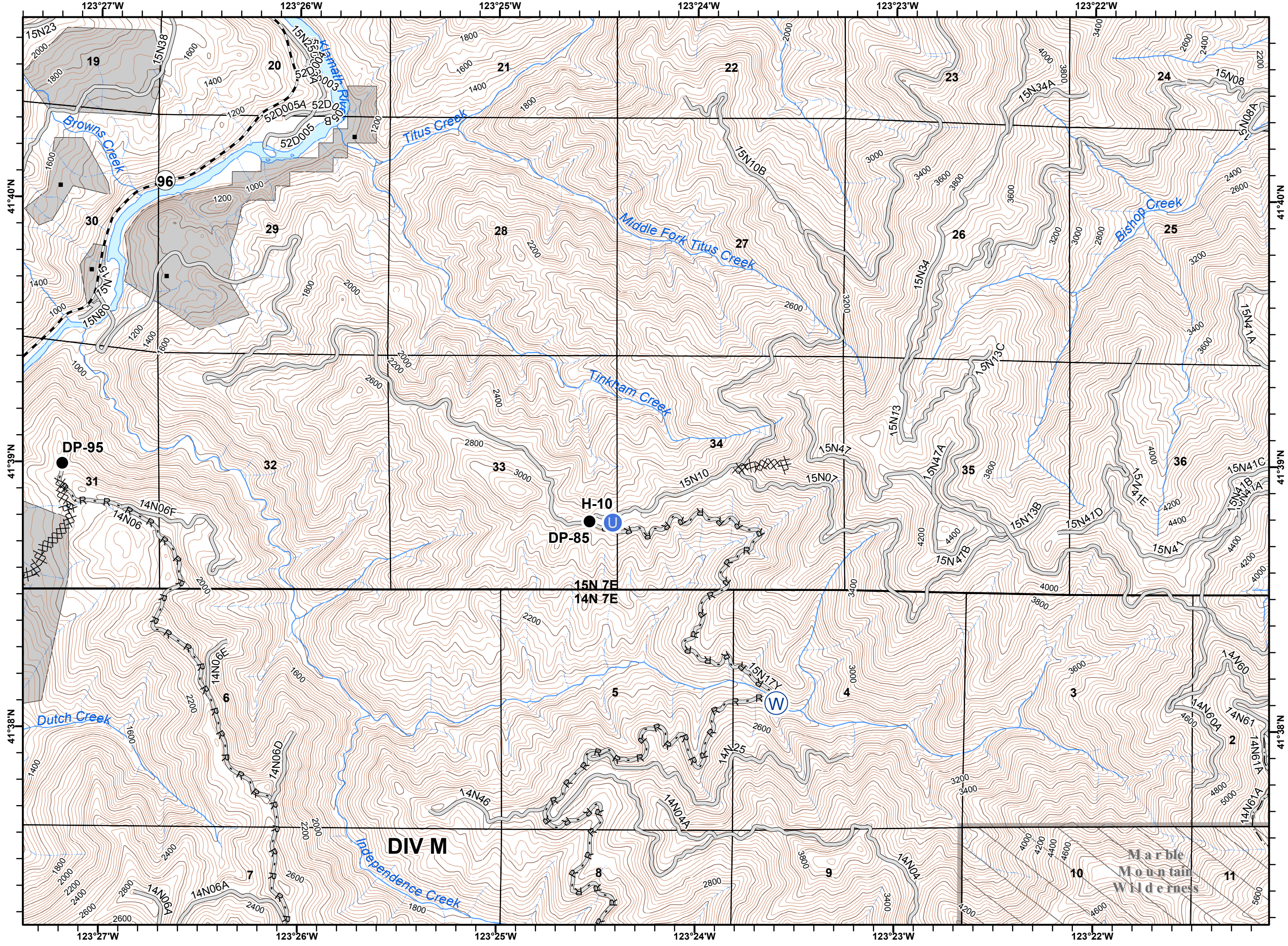


- Structures
- Highway 96
- ▭ Ranger District
- ▭ Non-FS Ownership
- Drop Point
- ⌋ Division Break
- XXXX Completed Dozer Line
- H · Completed Hand Line
- R · Road as Completed Line



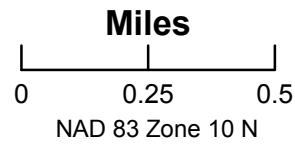
Miles






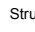












- Structures
- Highway 96
- Ranger District
- Non-FS Ownership
- Wilderness
- Drop Point
- Unimproved Landing Area
- Water Source
- Completed Dozer Line
- Completed Hand Line
- Road as Completed Line

D6	D7	E8
E6	E7	E8
F6	F7	F8
G6	G7	G8
H6	H7	
I6	I7	

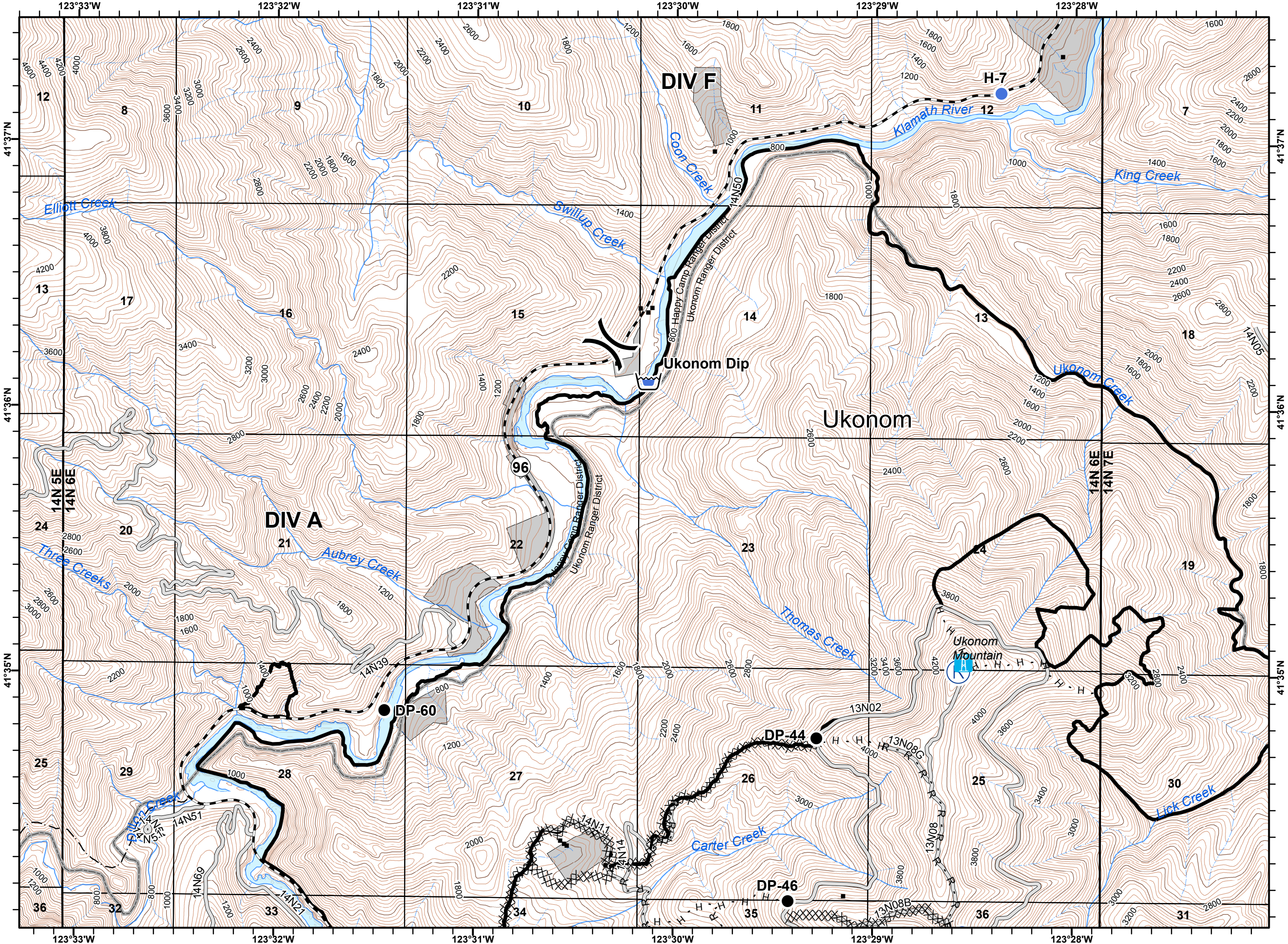
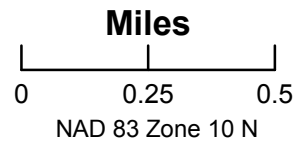










DIV M

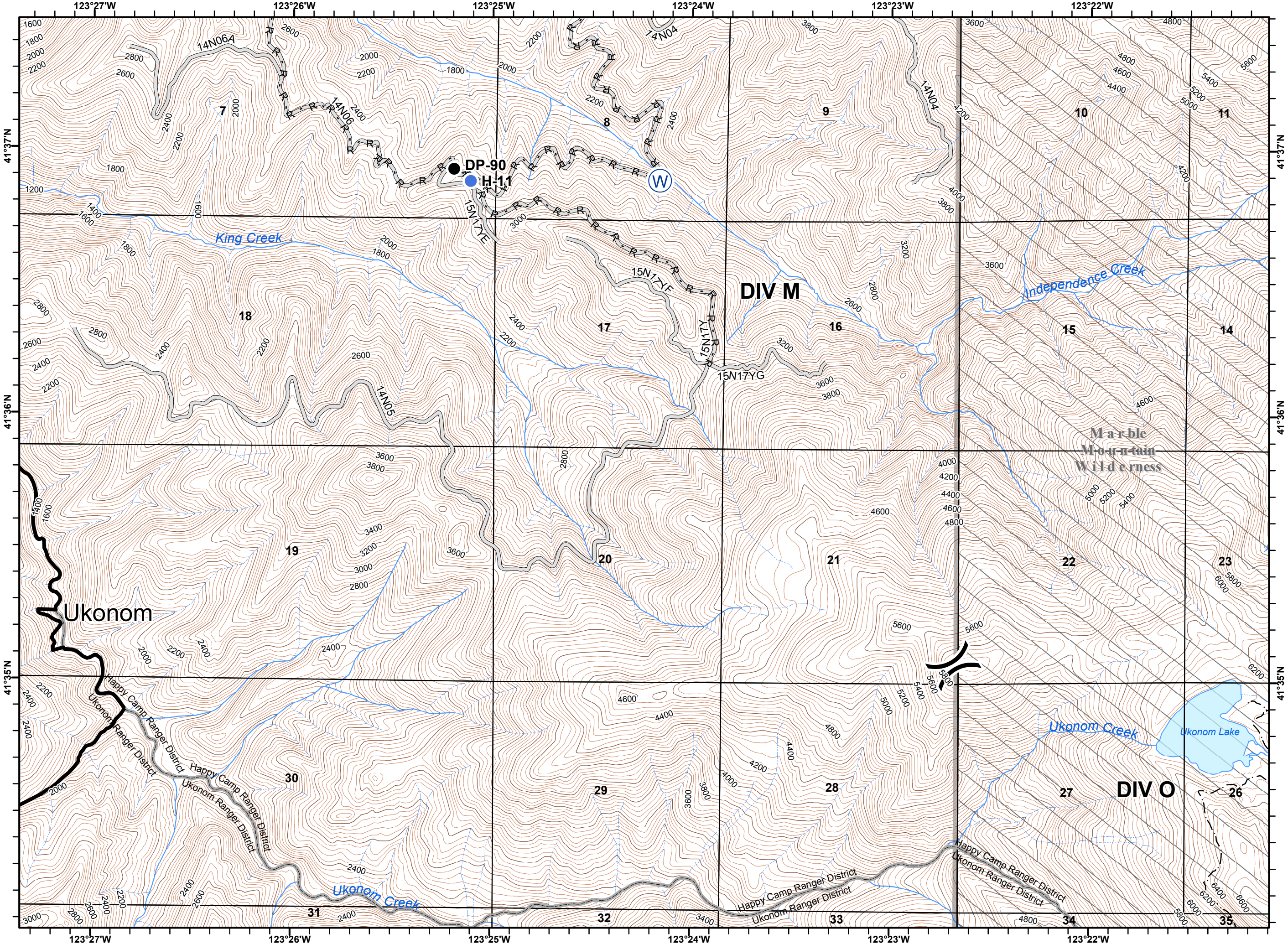
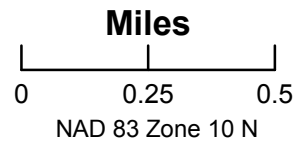
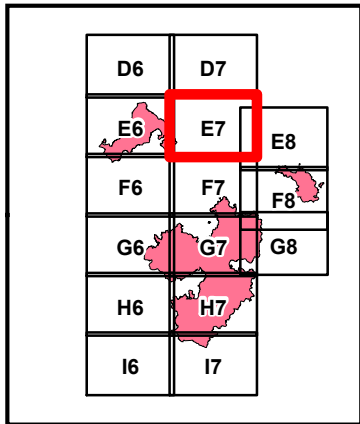
Marble Mountain Wilderness

-  Ukonom Lookout Tower
-  Structures
-  Highway 96
-  Ranger District
-  Non-FS Ownership
-  Dip Site
-  Drop Point
-  Helispot
-  Repeater
-  Division Break
-  Completed Line
-  Completed Dozer Line
-  Completed Hand Line
-  Road as Completed Line

D6	D7	
E6	E7	E8
F6	F7	F8
G6	G7	G8
H6	H7	
I6	I7	



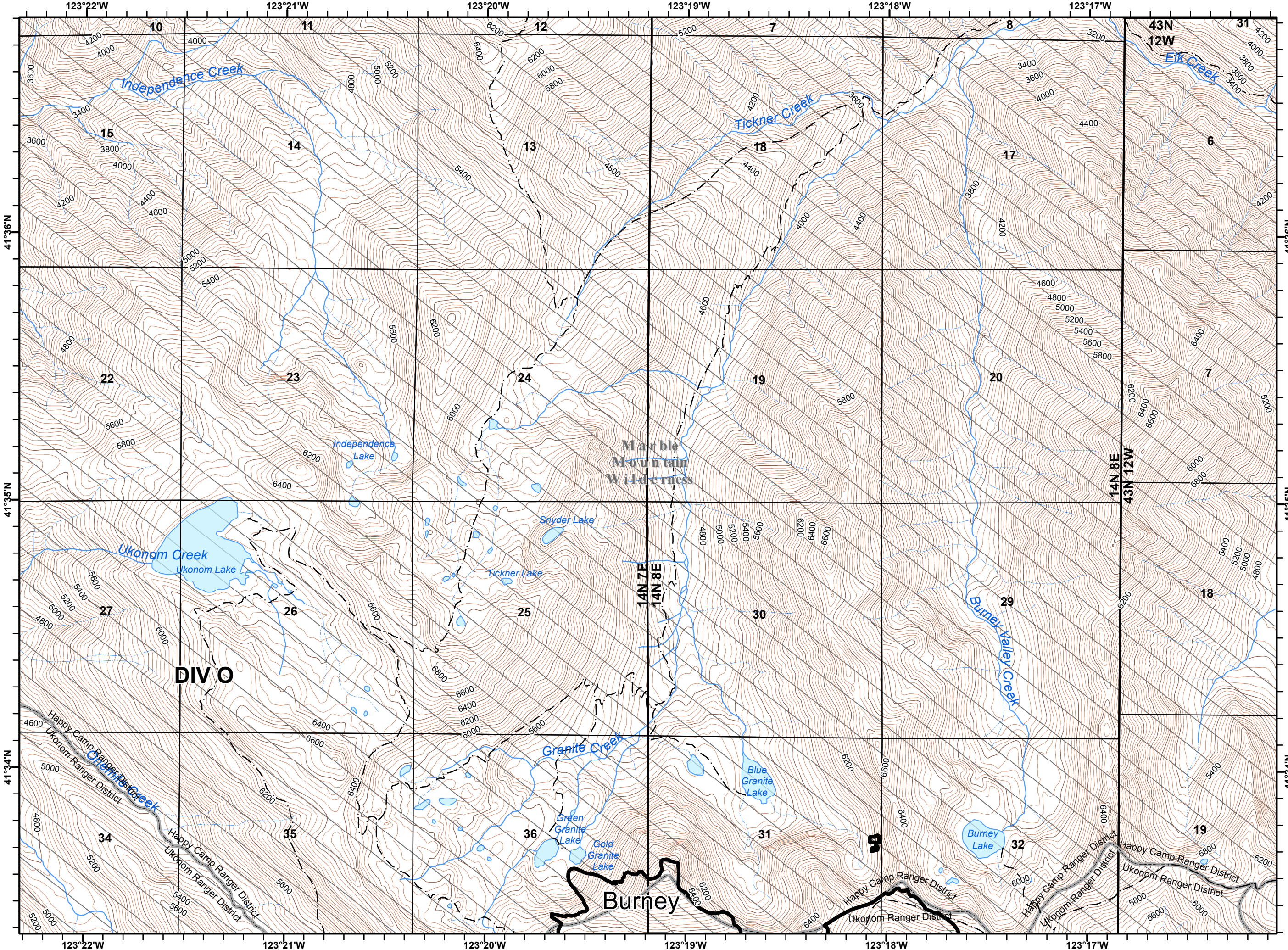
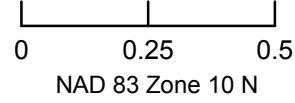
-  Ranger District
-  Wilderness
-  Drop Point
-  Helispot
-  Water Source
-  Division Break
-  Completed Line
-  R - Road as Completed Line
















-  Ranger District
-  Wilderness
-  Completed Line

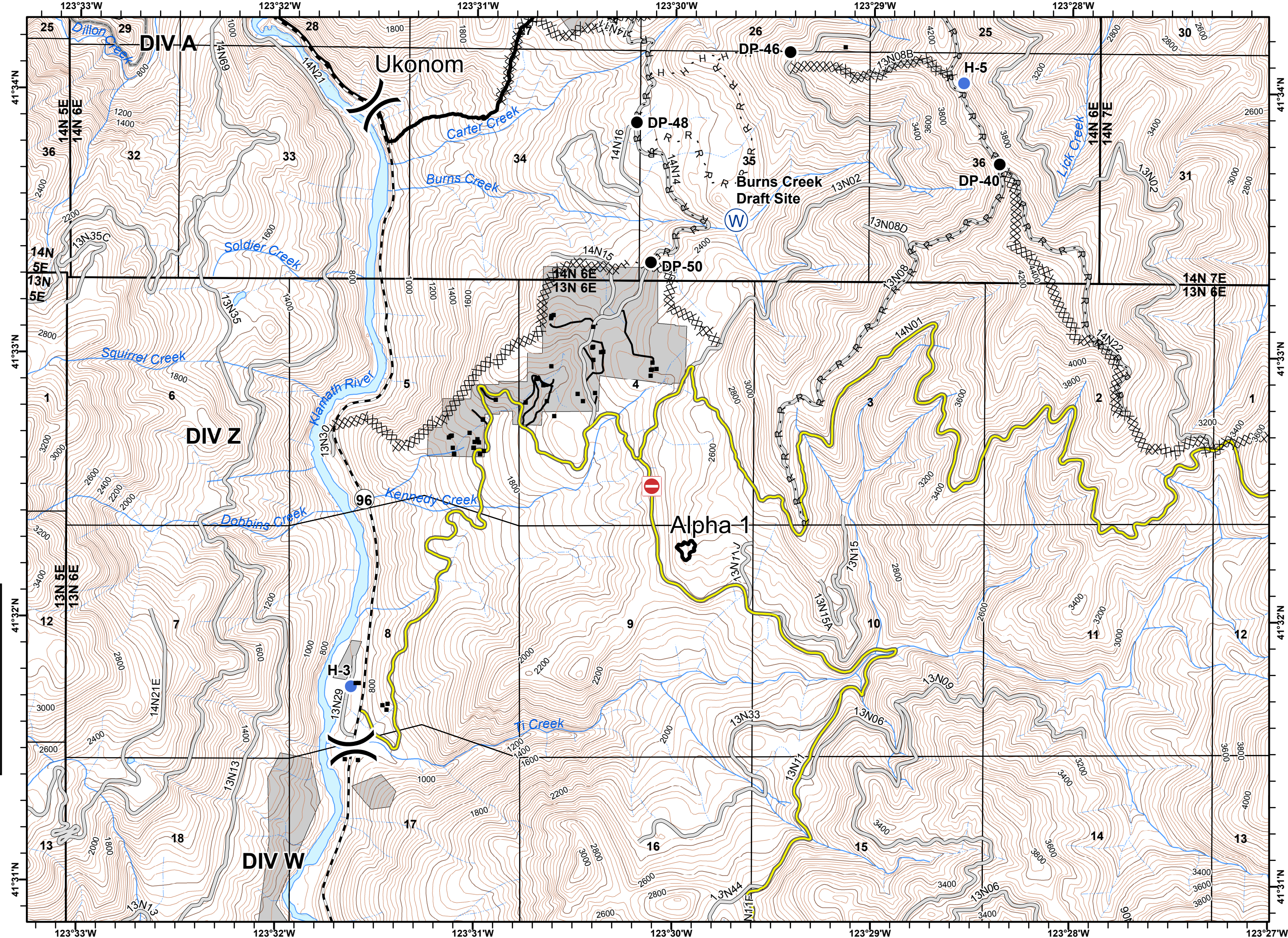
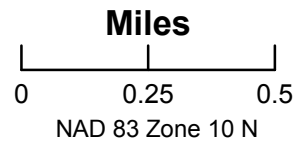
D6	D7
E6	E7
F6	F7
G6	G7
H6	H7
I6	I7

Miles



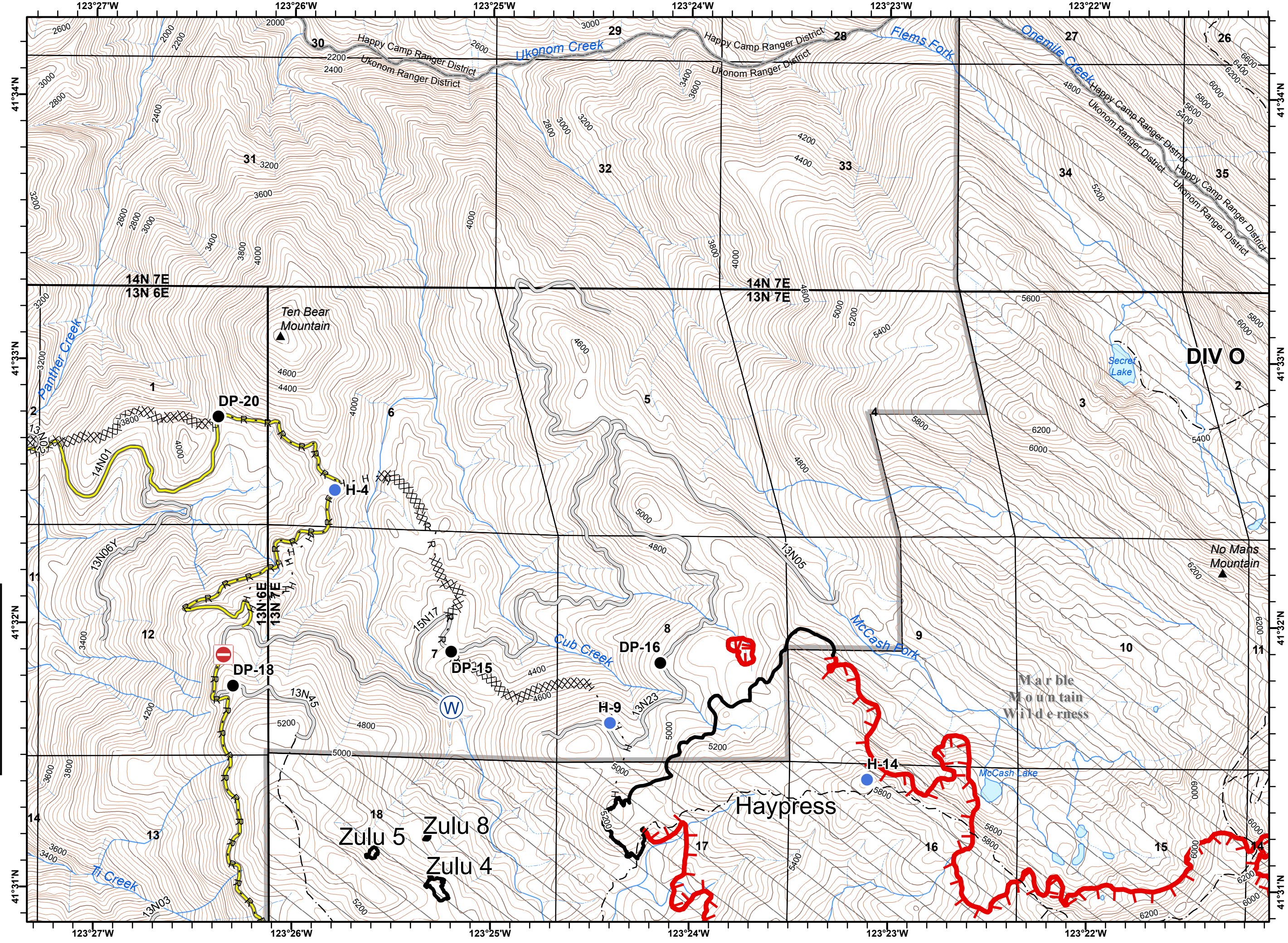
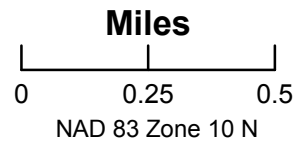
-  Structures
-  Highway 96
-  Closed Road
-  Ranger District
-  Non-FS Ownership
-  Drop Point
-  Helispot
-  Water Source
-  Division Break
-  Completed Line
-  Completed Dozer Line
-  Completed Hand Line
-  Road as Completed Line

D6	D7	
E6	E7	E8
F6	F7	F8
G6	G7	G8
H6	H7	
I6	I7	



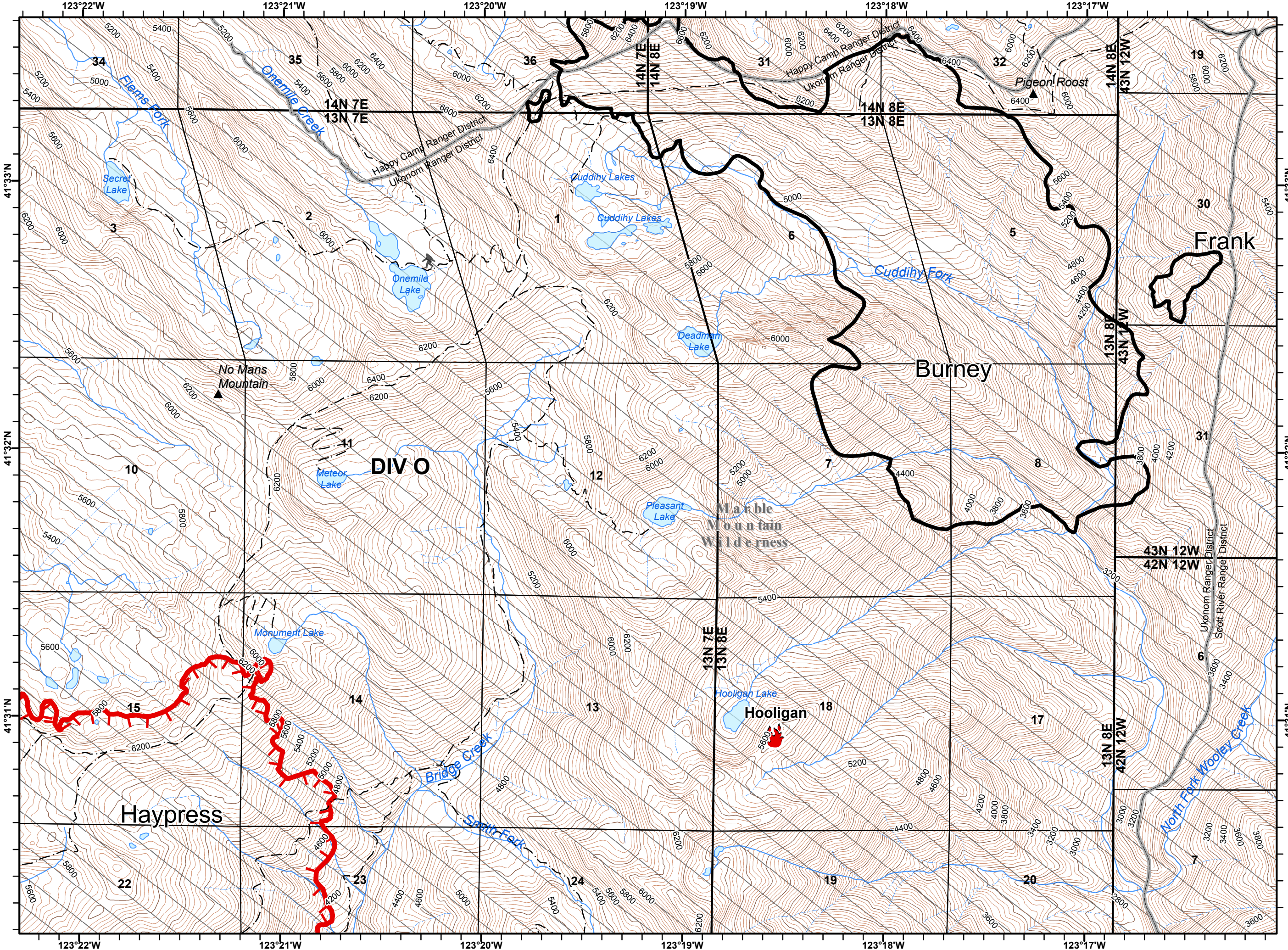
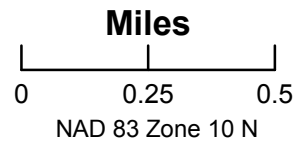
-  Closed Road
-  Ranger District
-  Wilderness
-  Drop Point
-  Helispot
-  Water Source
-  Uncontrolled Fire Edge
-  Completed Line
-  Completed Dozer Line
-  Completed Hand Line
-  Road as Completed Line

D6	D7	
E6	E7	E8
F6	F7	F8
G6	G7	G8
H6	H7	
I6	I7	



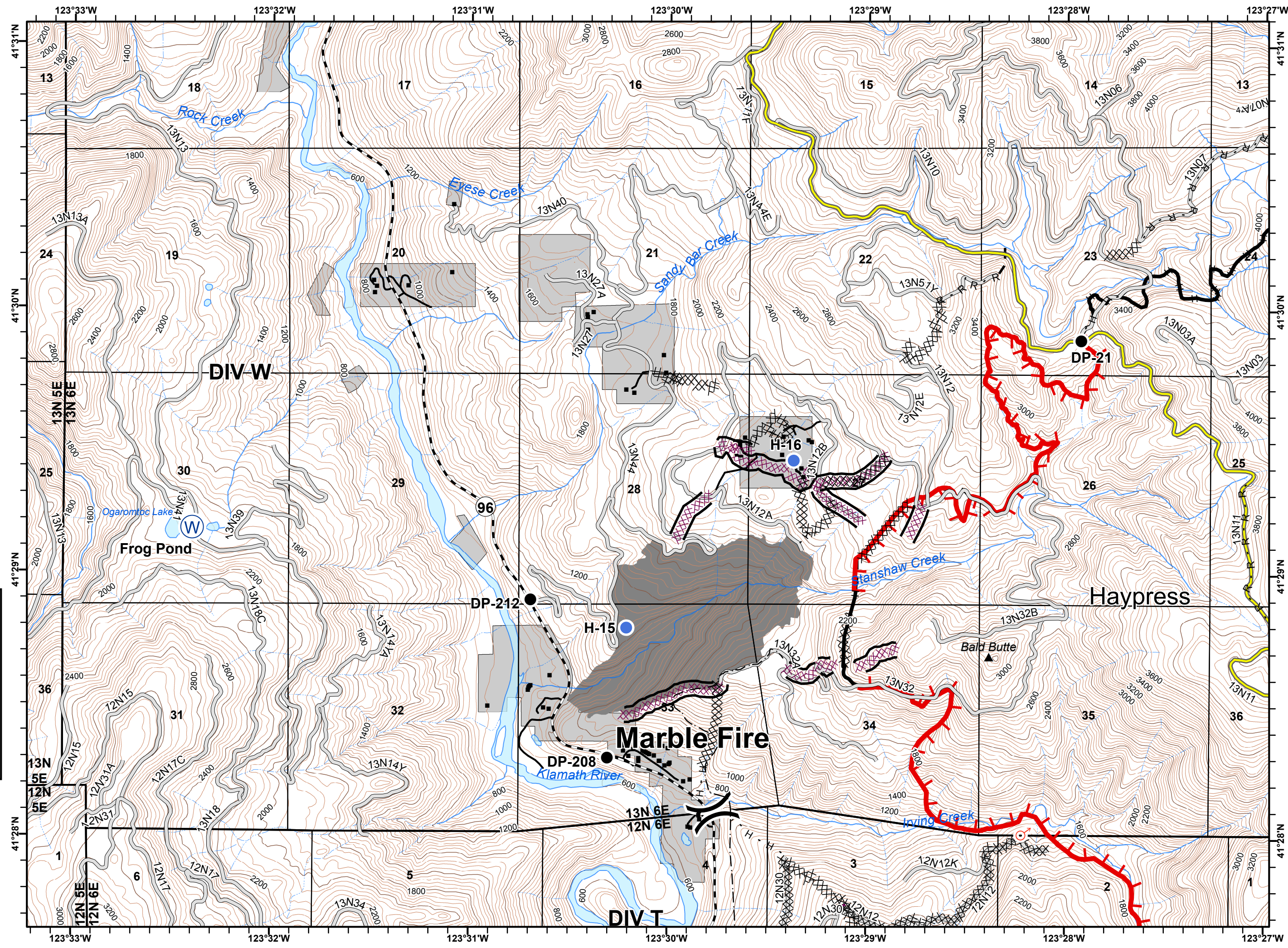
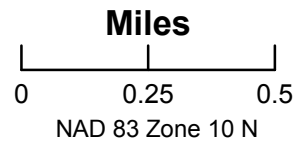
-  Ranger District
-  Wilderness
-  Fire Location
-  Uncontrolled Fire Edge
-  Completed Line

D6	D7	
E6	E7	E8
F6	F7	F8
G6	G7	G8
H6	H7	
I6	I7	



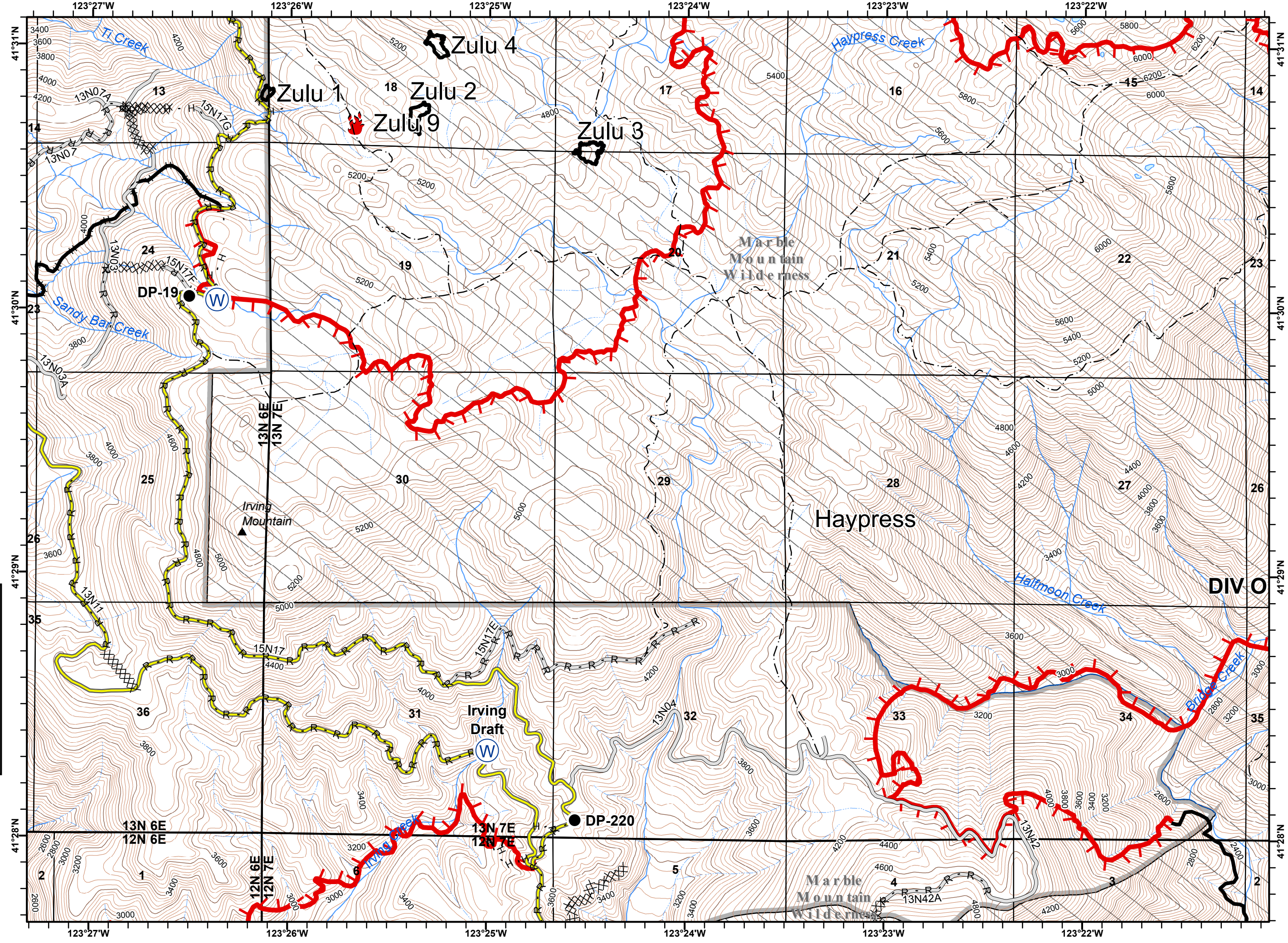
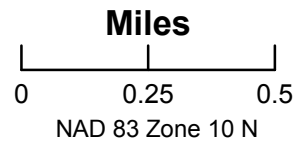
- Marble Fire
- Marble Fire Dozer Line
- Structures
- Highway 96
- Ranger District
- Non-FS Ownership
- Drop Point
- Helispot
- Spot Fire
- Water Source
- Division Break
- Uncontrolled Fire Edge
- Completed Line
- Planned Fire Line
- Unknown
- Completed Dozer Line
- Completed Hand Line
- Road as Completed Line

D6	D7	
E6	E7	E8
F6	F7	F8
G6	G7	G8
H6	H7	
I6	I7	

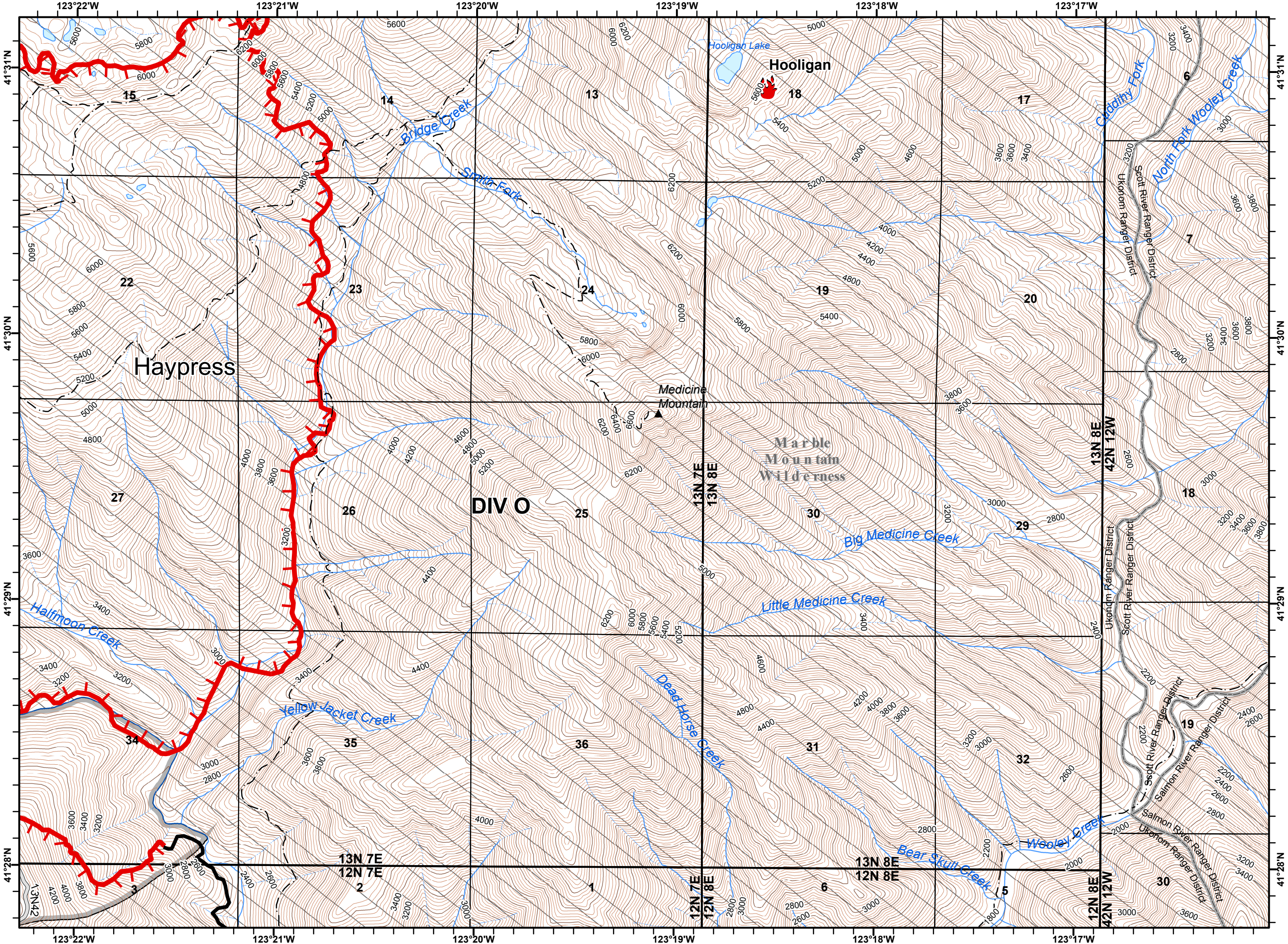
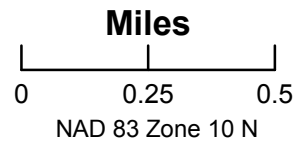
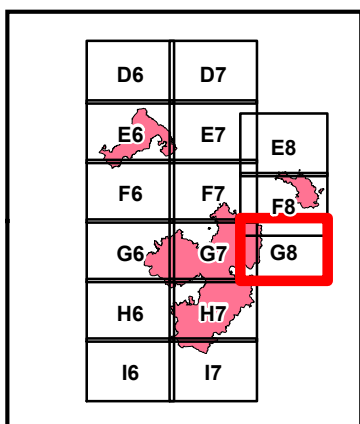


-  Ranger District
-  Wilderness
-  Drop Point
-  Fire Location
-  Water Source
-  Uncontrolled Fire Edge
-  Completed Line
-  Completed Dozer Line
-  Completed Hand Line
-  Road as Completed Line

D6	D7	
E6	E7	E8
F6	F7	F8
G6	G7	G8
H6	H7	
I6	I7	

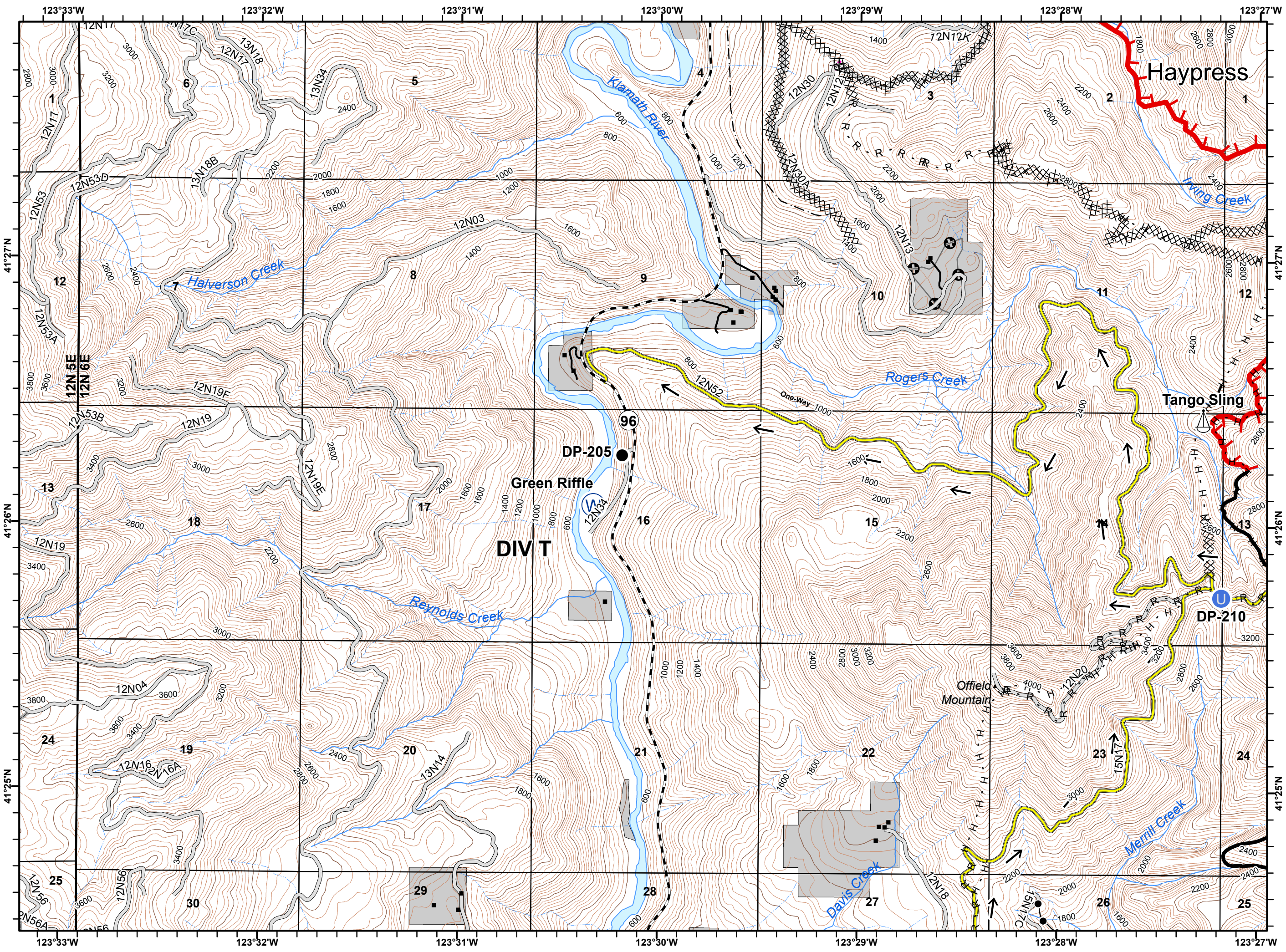
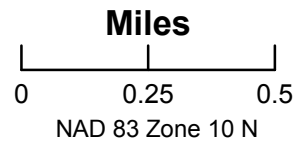


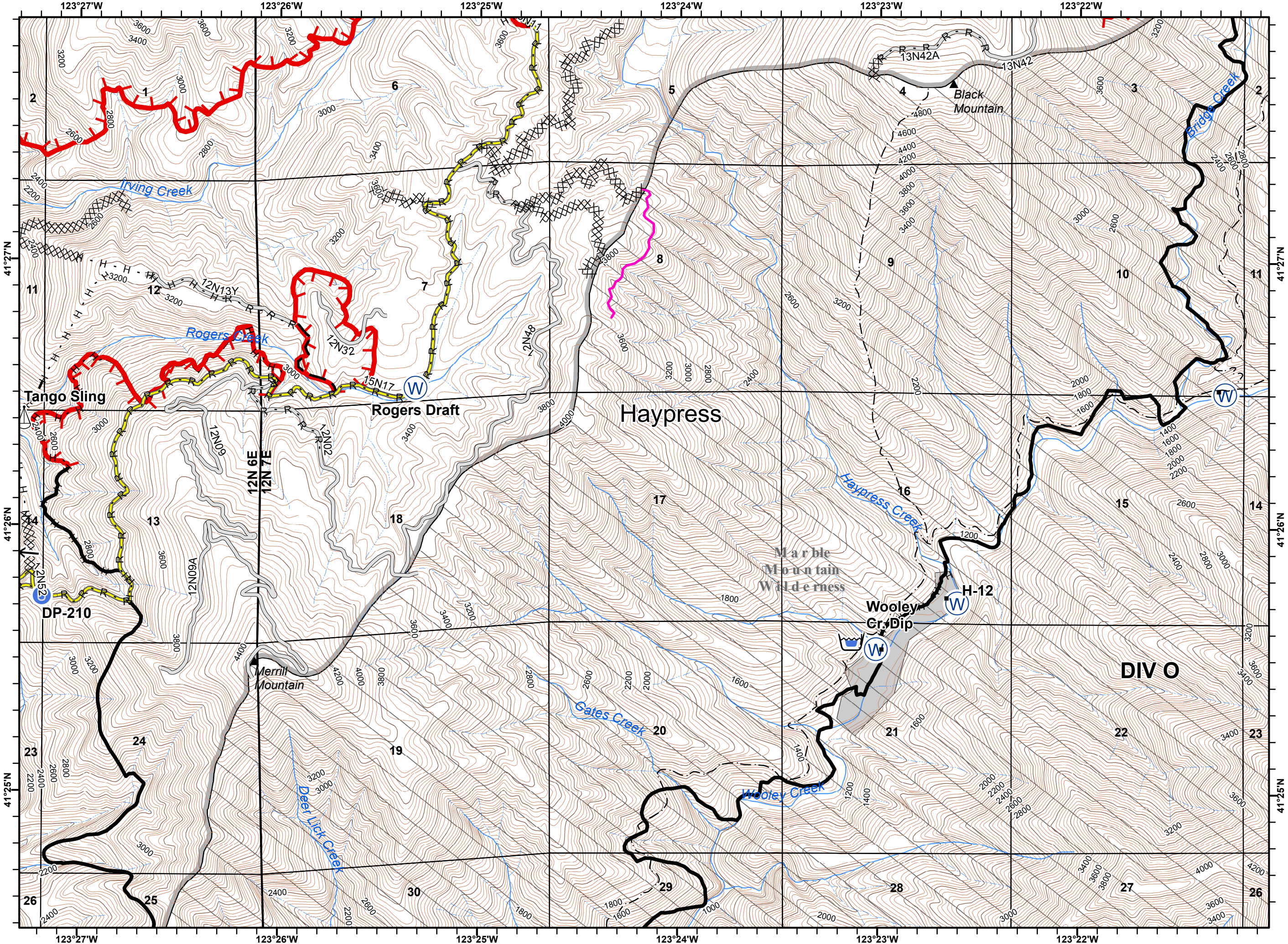
-  Ranger District
-  Wilderness
-  Fire Location
-  Uncontrolled Fire Edge
-  Completed Line



- Structures
- Utility Line
- ➔ Traffic Direction
- Highway 96
- ▭ Ranger District
- ▭ Non-FS Ownership
- Drop Point
- U Unimproved Landing Area
- ⚓ Sling Site
- W Water Source
- Uncontrolled Fire Edge
- Completed Line
- - - Planned Fire Line
- ⊕ Other
- Unknown
- XXXX Completed Dozer Line
- H - Completed Hand Line
- R - Road as Completed Line

D6	D7	
E6	E7	E8
F6	F7	F8
G6	G7	G8
H6	H7	
I6	I7	

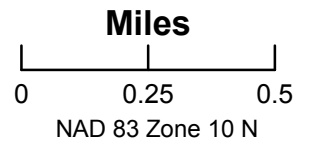


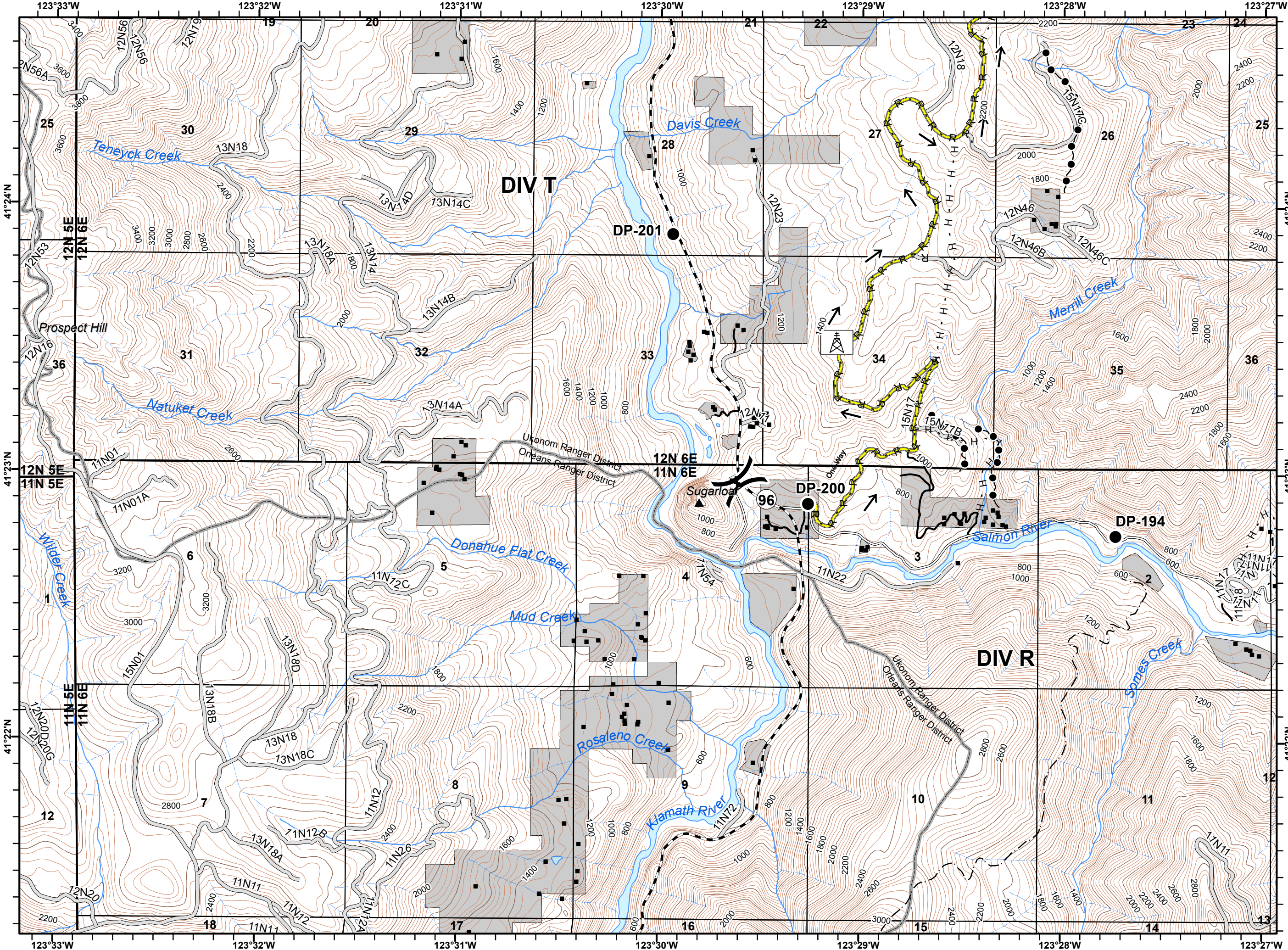


- Structures
- Traffic Direction
- ▭ Ranger District
- ▭ Non-FS Ownership
- ▭ Wilderness
- 🏊 Dip Site
- Drop Point
- U Unimproved Landing Area
- Helispot
- 🪂 Sling Site
- W Water Source

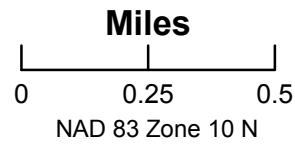
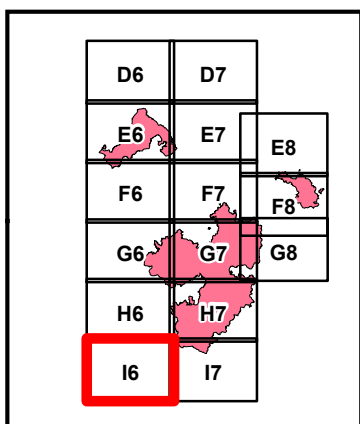
- Uncontrolled Fire Edge
- Completed Line
- - - Planned Fire Line
- Unknown
- ⊗ Completed Dozer Line
- H - Completed Hand Line
- R - Road as Completed Line

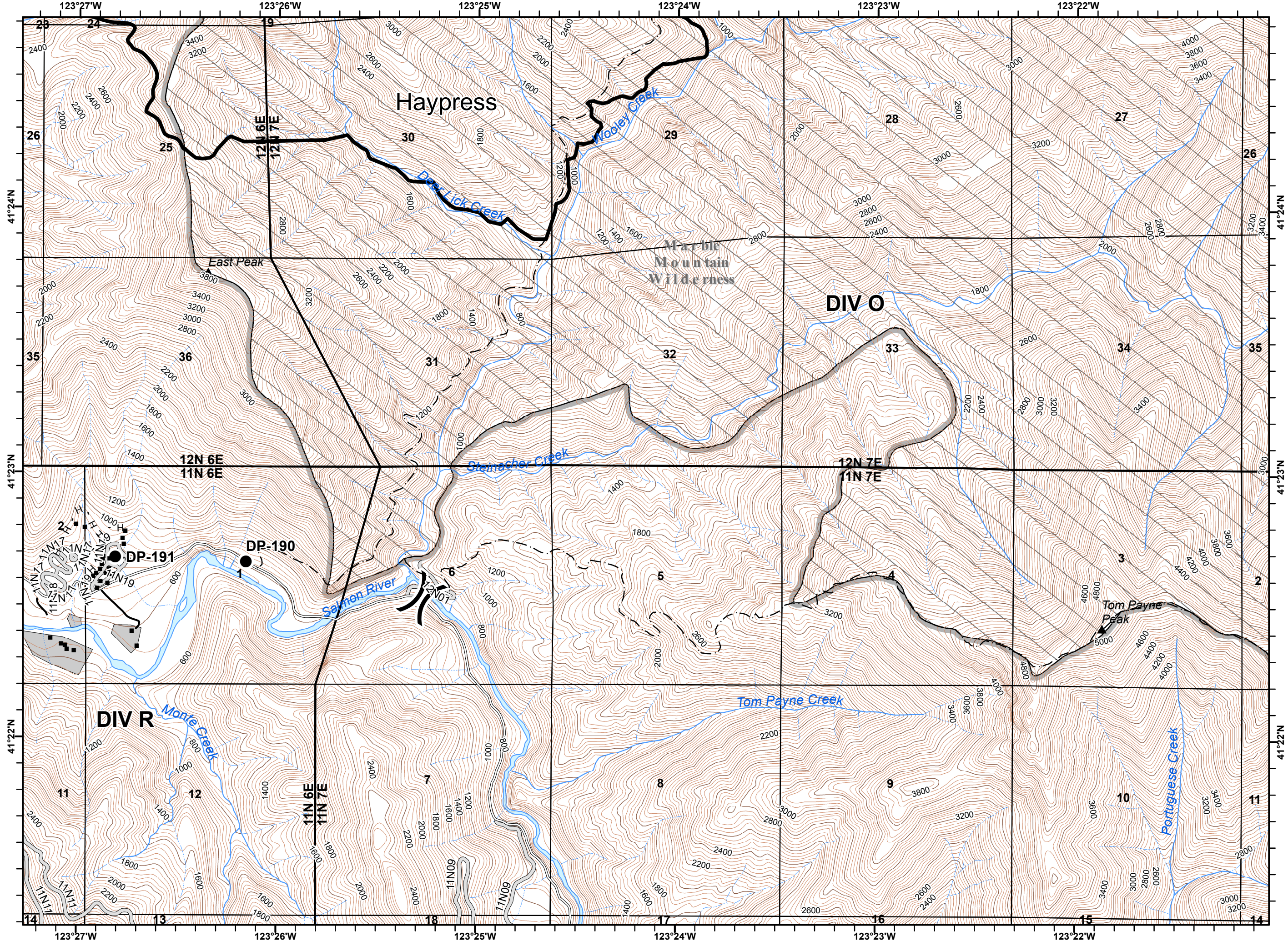
D6	D7	
E6	E7	E8
F6	F7	F8
G6	G7	G8
H6	H7	
I6	I7	





- Structures
- ⊕ Utility Point
- Utility Line
- ➔ Traffic Direction
- Highway 96
- ▭ Ranger District
- ▭ Non-FS Ownership
- Drop Point
- ⎓ Division Break
- H - Completed Hand Line
- R - Road as Completed Line





- Structures
- ▭ Ranger District
- ▭ Non-FS Ownership
- ▭ Wilderness
- Drop Point
- ⎓ Division Break
- Completed Line
- - - Completed Hand Line

