


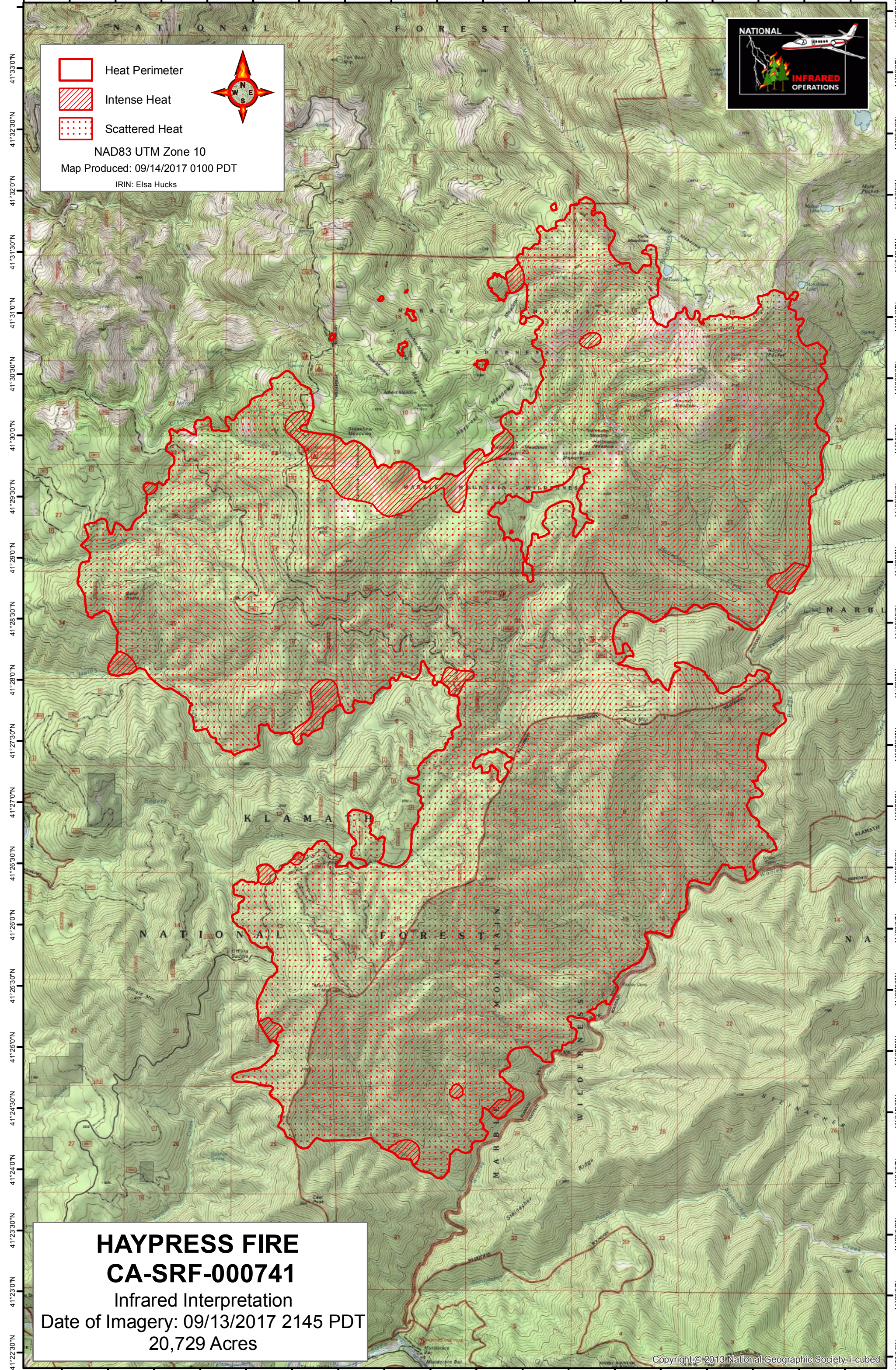


123°29'30"W 123°29'0"W 123°28'30"W 123°28'0"W 123°27'30"W 123°27'0"W 123°26'30"W 123°26'0"W 123°25'30"W 123°25'0"W 123°24'30"W 123°24'0"W 123°23'30"W 123°23'0"W 123°22'30"W 123°22'0"W 123°21'30"W 123°21'0"W 123°20'30"W



 Heat Perimeter  
 Intense Heat  
 Scattered Heat  
 NAD83 UTM Zone 10  
 Map Produced: 09/14/2017 0100 PDT  
 IRIN: Elsa Hucks



**HAYPRESS FIRE**  
**CA-SRF-000741**  
 Infrared Interpretation  
 Date of Imagery: 09/13/2017 2145 PDT  
 20,729 Acres

123°29'0"W 123°28'30"W 123°28'0"W 123°27'30"W 123°27'0"W 123°26'30"W 123°26'0"W 123°25'30"W 123°25'0"W 123°24'30"W 123°24'0"W 123°23'30"W 123°23'0"W 123°22'30"W 123°22'0"W 123°21'30"W 123°21'0"W 123°20'30"W

41°33'00"N 41°32'30"N 41°32'00"N 41°31'30"N 41°31'00"N 41°30'30"N 41°30'00"N 41°29'30"N 41°29'00"N 41°28'30"N 41°28'00"N 41°27'30"N 41°27'00"N 41°26'30"N 41°26'00"N 41°25'30"N 41°25'00"N 41°24'30"N 41°24'00"N 41°23'30"N 41°23'00"N 41°22'30"N

41°33'00"N 41°33'00"N 41°32'30"N 41°32'30"N 41°32'00"N 41°32'00"N 41°31'30"N 41°31'30"N 41°31'00"N 41°31'00"N 41°30'30"N 41°30'30"N 41°30'00"N 41°30'00"N 41°29'30"N 41°29'30"N 41°29'00"N 41°29'00"N 41°28'30"N 41°28'30"N 41°28'00"N 41°28'00"N 41°27'30"N 41°27'30"N 41°27'00"N 41°27'00"N 41°26'30"N 41°26'30"N 41°26'00"N 41°26'00"N 41°25'30"N 41°25'30"N 41°25'00"N 41°25'00"N 41°24'30"N 41°24'30"N 41°24'00"N 41°24'00"N 41°23'30"N 41°23'30"N 41°23'00"N 41°23'00"N 41°22'30"N