




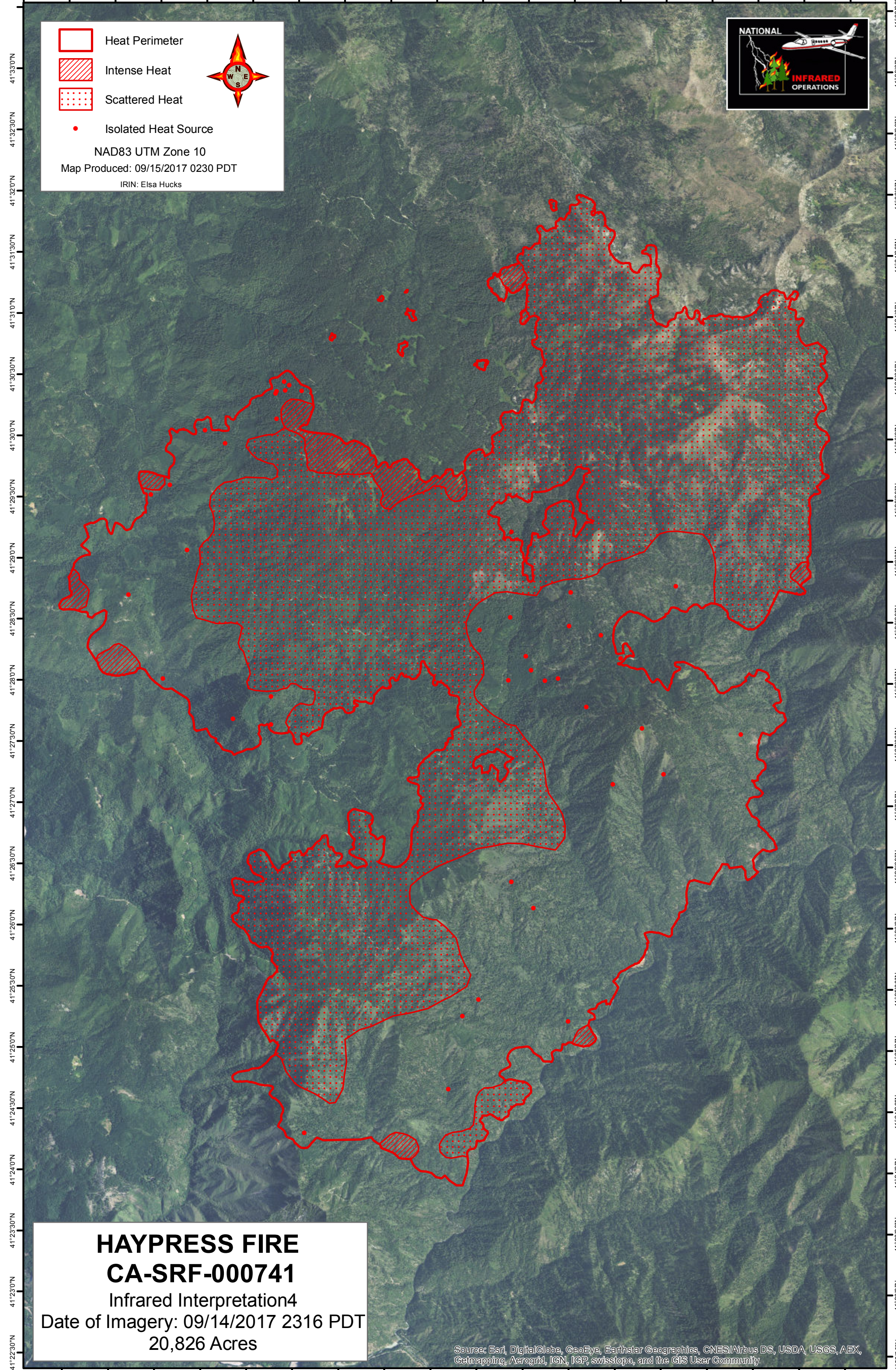
123°29'30"W 123°29'0"W 123°28'30"W 123°28'0"W 123°27'30"W 123°27'0"W 123°26'30"W 123°26'0"W 123°25'30"W 123°25'0"W 123°24'30"W 123°24'0"W 123°23'30"W 123°23'0"W 123°22'30"W 123°22'0"W 123°21'30"W 123°21'0"W 123°20'30"W

-  Heat Perimeter
-  Intense Heat
-  Scattered Heat



Isolated Heat Source

NAD83 UTM Zone 10
Map Produced: 09/15/2017 0230 PDT
IRIN: Elsa Hucks



HAYPRESS FIRE CA-SRF-000741

Infrared Interpretation4

Date of Imagery: 09/14/2017 2316 PDT
20,826 Acres

Source: Esri, DigitalGlobe, GeoEye, Earthstar Geographics, CNES/Airbus DS, USDA, USGS, AEX, Getmapping, Aerogrid, IGN, IGP, swisstopo, and the GIS User Community

123°29'0"W 123°28'30"W 123°28'0"W 123°27'30"W 123°27'0"W 123°26'30"W 123°26'0"W 123°25'30"W 123°25'0"W 123°24'30"W 123°24'0"W 123°23'30"W 123°23'0"W 123°22'30"W 123°22'0"W 123°21'30"W 123°21'0"W 123°20'30"W

41°33'00"N
41°33'00"N
41°32'30"N
41°32'00"N
41°31'30"N
41°31'00"N
41°30'30"N
41°30'00"N
41°29'30"N
41°29'00"N
41°28'30"N
41°28'00"N
41°27'30"N
41°27'00"N
41°26'30"N
41°26'00"N
41°25'30"N
41°25'00"N
41°24'30"N
41°24'00"N
41°23'30"N
41°23'00"N
41°22'30"N

41°33'00"N
41°33'00"N
41°32'30"N
41°32'00"N
41°31'30"N
41°31'00"N
41°30'30"N
41°30'00"N
41°29'30"N
41°29'00"N
41°28'30"N
41°28'00"N
41°27'30"N
41°27'00"N
41°26'30"N
41°26'00"N
41°25'30"N
41°25'00"N
41°24'30"N
41°24'00"N
41°23'30"N
41°23'00"N
41°22'30"N