



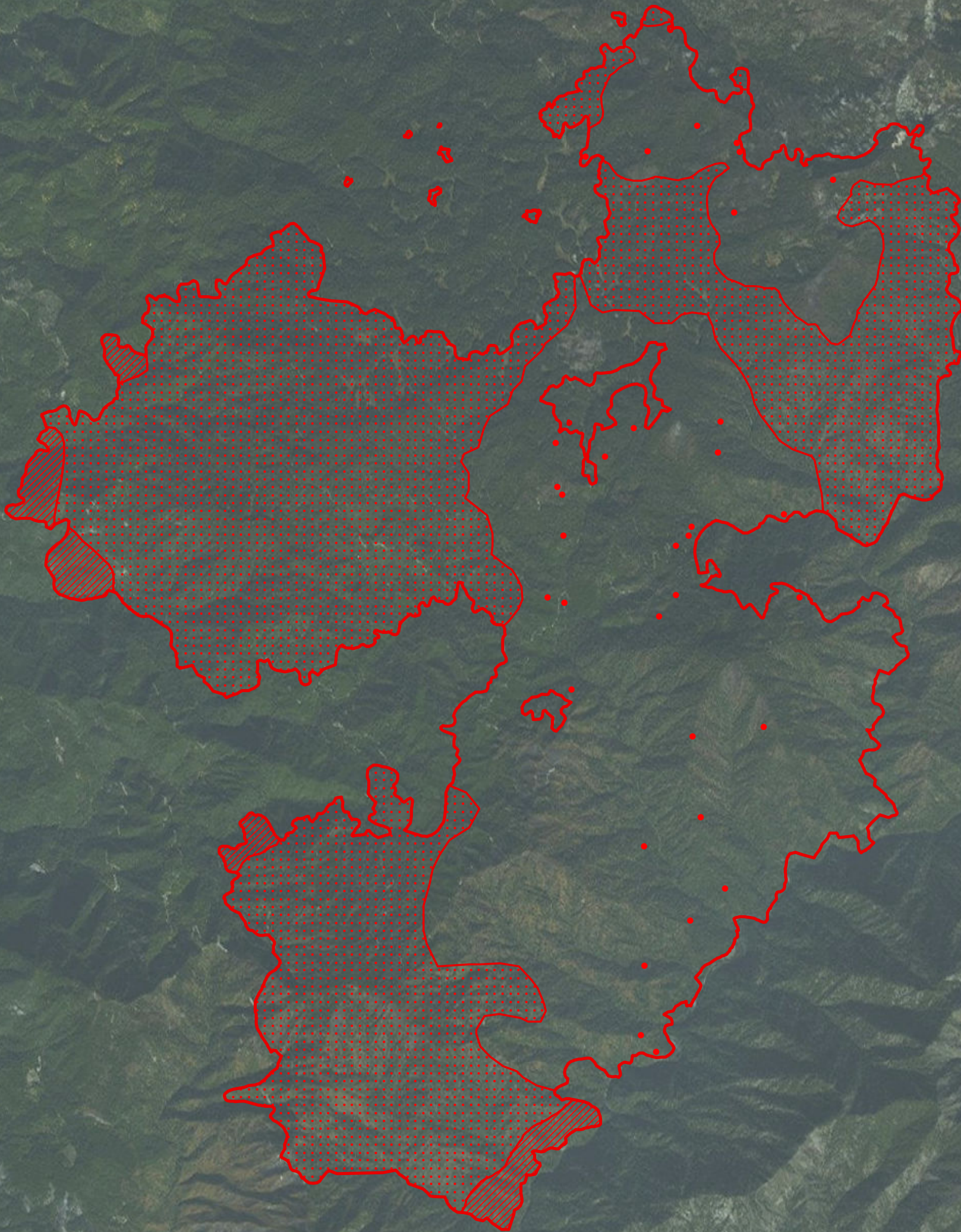


123°29'30"W 123°29'0"W 123°28'30"W 123°28'0"W 123°27'30"W 123°27'0"W 123°26'30"W 123°26'0"W 123°25'30"W 123°25'0"W 123°24'30"W 123°24'0"W 123°23'30"W 123°23'0"W 123°22'30"W 123°22'0"W 123°21'30"W 123°21'0"W 123°20'30"W 123°20'0"W

-  Heat Perimeter
-  Intense Heat
-  Scattered Heat
-  Isolated Heat Source



NAD83 UTM Zone 10
 Map Produced: 09/15/2017 2300 PDT
 IRIN: Elsa Hucks



HAYPRESS FIRE
CA-SRF-000741
 Infrared Interpretation
 Date of Imagery: 09/15/2017 1918 PDT
 20,993 Acres

Source: Esri, DigitalGlobe, GeoEye, Earthstar Geographics, CNES/Airbus DS, USDA, USGS, AEX, Getmapping, Aerogrid, IGN, IGP, swisstopo, and the GIS User Community

123°29'30"W 123°29'0"W 123°28'30"W 123°28'0"W 123°27'30"W 123°27'0"W 123°26'30"W 123°26'0"W 123°25'30"W 123°25'0"W 123°24'30"W 123°24'0"W 123°23'30"W 123°23'0"W 123°22'30"W 123°22'0"W 123°21'30"W 123°21'0"W 123°20'30"W 123°20'0"W