

040
Scattered Heat
41° 29.976' N
123° 27.848' W
Div W

003
Logs
41° 31.655' N
123° 23.693' W
Div W

041
Stumps - Multiple Locations
41° 25.487' N
123° 26.801' W
Div T

049
Scattered Heat
41° 24.360' N
123° 26.712' W
Div R

057
Stumps - Multiple Locations
41° 24.304' N
123° 24.520' W
Div R

VETERAN'S EMERGENCY TECHNICAL SERVICES
www.VETSresponse.com
805.218.9646

VETS
Cost Effective Infrared

Aspen Helicopters
www.aspenhelo.com
805.985.5416

- Hot Spot - Within 200' of the line (Heat above 200 degrees, Little Vegetation in Vicinity)
- Hot Spot - Within 200' of the line (Heat above 200 degrees, Unburned Vegetation in Vicinity)
- Live Fire - Uncontained Spot Fire or Fire Front

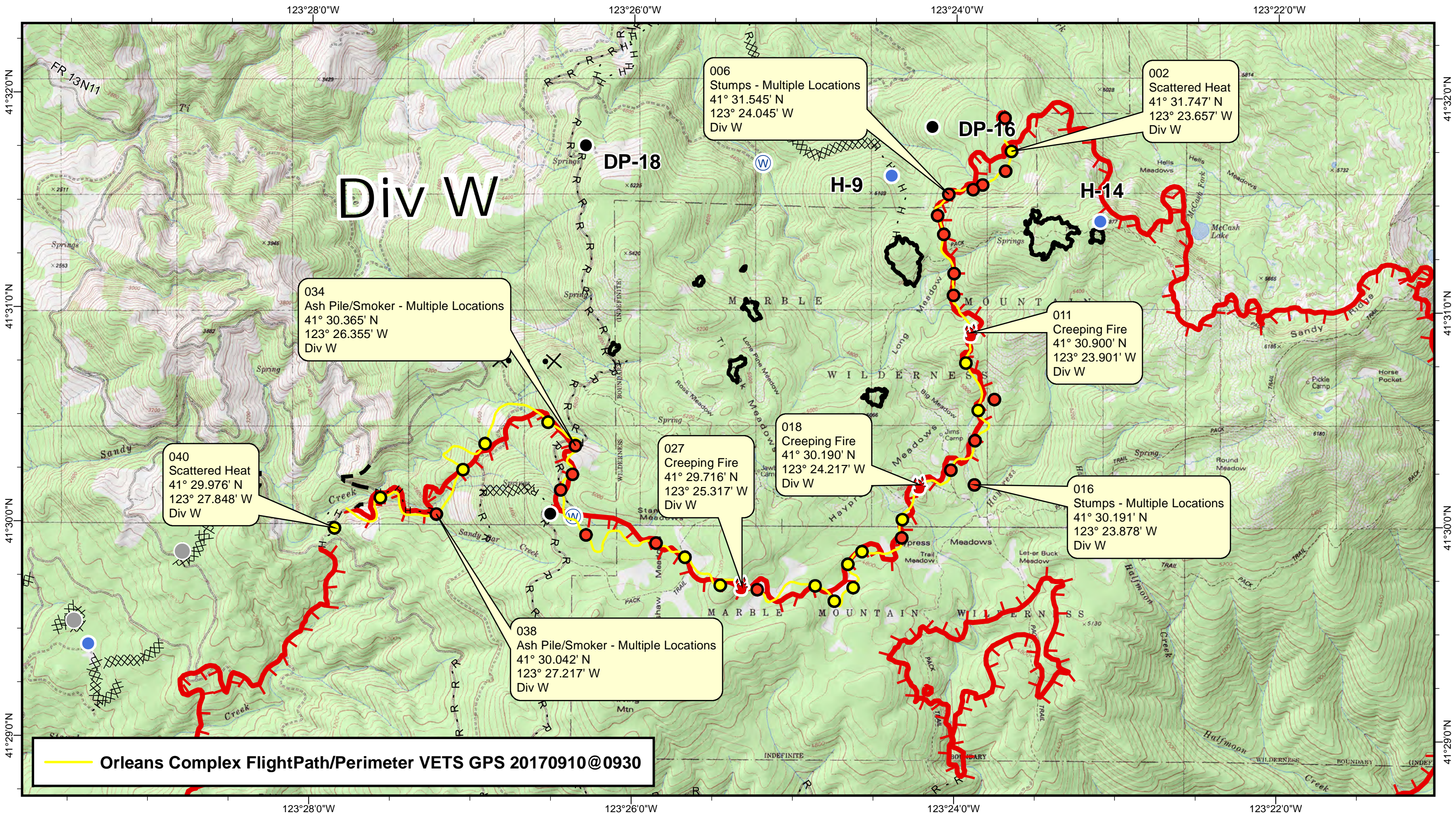
Orleans Complex

CA-SRF-0741



INDEX - HAYPRESS FIRE
Data Collected: 20170910 @ 0930

Sept. 10, 2017



Div W

006
Stumps - Multiple Locations
41° 31.545' N
123° 24.045' W
Div W

002
Scattered Heat
41° 31.747' N
123° 23.657' W
Div W

034
Ash Pile/Smoker - Multiple Locations
41° 30.365' N
123° 26.355' W
Div W

011
Creeping Fire
41° 30.900' N
123° 23.901' W
Div W

040
Scattered Heat
41° 29.976' N
123° 27.848' W
Div W

027
Creeping Fire
41° 29.716' N
123° 25.317' W
Div W

018
Creeping Fire
41° 30.190' N
123° 24.217' W
Div W

016
Stumps - Multiple Locations
41° 30.191' N
123° 23.878' W
Div W

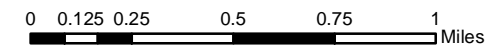
038
Ash Pile/Smoker - Multiple Locations
41° 30.042' N
123° 27.217' W
Div W

Orleans Complex FlightPath/Perimeter VETS GPS 20170910@0930

VETERAN'S EMERGENCY TECHNICAL SERVICES
www.VETSresponse.com
805.218-9646
VETS
Cost Effective Infrared
Aspen Helicopters
www.aspenhelo.com
805.985-5416

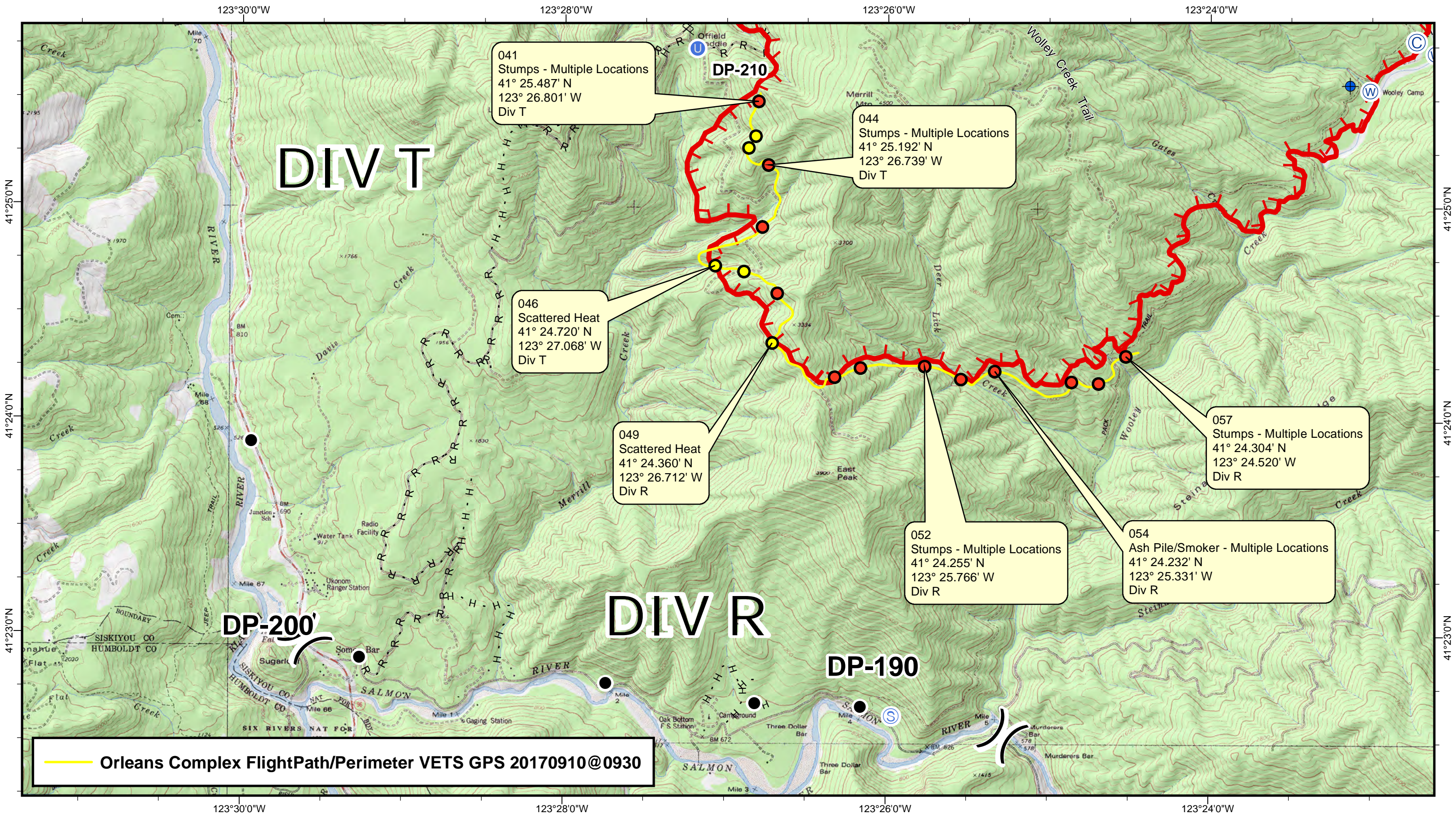
- Hot Spot - Within 200' of the line (Heat above 200 degrees, Little Vegetation in Vicinity)
- Hot Spot - Within 200' of the line (Heat above 200 degrees, Unburned Vegetation in Vicinity)
- Live Fire - Uncontained Spot Fire or Fire Front

Orleans Complex
CA-SRF-0741



DIV W - HAYPRESS FIRE
Data Collected: 20170910 @ 0930

Sept. 10, 2017



041
Stumps - Multiple Locations
41° 25.487' N
123° 26.801' W
Div T

044
Stumps - Multiple Locations
41° 25.192' N
123° 26.739' W
Div T

046
Scattered Heat
41° 24.720' N
123° 27.068' W
Div T

049
Scattered Heat
41° 24.360' N
123° 26.712' W
Div R

057
Stumps - Multiple Locations
41° 24.304' N
123° 24.520' W
Div R

052
Stumps - Multiple Locations
41° 24.255' N
123° 25.766' W
Div R

054
Ash Pile/Smoker - Multiple Locations
41° 24.232' N
123° 25.331' W
Div R

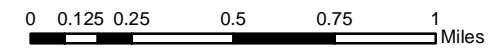
Orleans Complex FlightPath/Perimeter VETS GPS 20170910@0930

VETERAN'S EMERGENCY TECHNICAL SERVICES
www.VETSresponse.com
805.218-9646
VETS
Cost Effective Infrared
Aspen Helicopters
www.aspenhelo.com
805.985-5416

- Hot Spot - Within 200' of the line (Heat above 200 degrees, Little Vegetation in Vicinity)
- Hot Spot - Within 200' of the line (Heat above 200 degrees, Unburned Vegetation in Vicinity)
- Live Fire - Uncontained Spot Fire or Fire Front

Orleans Complex

CA-SRF-0741



DIV T & R - HAYPRESS FIRE
Data Collected: 20170910 @ 0930

Sept. 10, 2017

VETS IR Hotspots 20170910 @ 0930
Orleans Complex - Haypress Fire

ident	Lon	Lat	IR_Type	Label	Division
001	123° 23.699' W	41° 31.902' N	Significant	Ash Pile/Smoker - Multiple Locations	Div W
002	123° 23.657' W	41° 31.747' N	Moderate	Scattered Heat	Div W
003	123° 23.693' W	41° 31.655' N	Significant	Logs	Div W
004	123° 23.836' W	41° 31.589' N	Significant	Ash Pile - Multiple Locations	Div W
005	123° 23.895' W	41° 31.568' N	Significant	Stumps - Multiple Locations	Div W
006	123° 24.045' W	41° 31.545' N	Significant	Stumps - Multiple Locations	Div W
007	123° 24.114' W	41° 31.447' N	Significant	Stumps - Multiple Locations	Div W
008	123° 24.075' W	41° 31.358' N	Significant	Ash Pile - Multiple Locations	Div W
009	123° 24.010' W	41° 31.176' N	Significant	Logs	Div W
010	123° 24.014' W	41° 31.074' N	Significant	Stove Pipe	Div W
011	123° 23.901' W	41° 30.900' N	Open	Creeping Fire	Div W
012	123° 23.935' W	41° 30.760' N	Moderate	Scattered Heat	Div W
013	123° 23.757' W	41° 30.589' N	Significant	Logs	Div W
014	123° 23.856' W	41° 30.538' N	Moderate	Scattered Heat	Div W
015	123° 23.876' W	41° 30.397' N	Significant	Ash Pile/Smoker - Multiple Locations	Div W
016	123° 23.878' W	41° 30.191' N	Significant	Stumps - Multiple Locations	Div W
017	123° 24.024' W	41° 30.260' N	Significant	Logs	Div W
018	123° 24.217' W	41° 30.190' N	Open	Creeping Fire	Div W
019	123° 24.325' W	41° 30.027' N	Moderate	Scattered Heat	Div W
020	123° 24.328' W	41° 29.942' N	Significant	Ash Pile/Smoker - Multiple Locations	Div W
021	123° 24.575' W	41° 29.876' N	Moderate	Scattered Heat	Div W
022	123° 24.661' W	41° 29.818' N	Moderate	Scattered Heat	Div W
023	123° 24.628' W	41° 29.709' N	Moderate	Scattered Heat	Div W
024	123° 24.743' W	41° 29.646' N	Moderate	Scattered Heat	Div W
025	123° 24.862' W	41° 29.716' N	Moderate	Scattered Heat	Div W
026	123° 25.222' W	41° 29.697' N	Significant	Logs	Div W
027	123° 25.317' W	41° 29.716' N	Open	Creeping Fire	Div W
028	123° 25.453' W	41° 29.718' N	Moderate	Scattered Heat	Div W
029	123° 25.673' W	41° 29.847' N	Moderate	Scattered Heat	Div W
030	123° 25.851' W	41° 29.912' N	Significant	Ash Pile/Smoker - Multiple Locations	Div W
031	123° 26.287' W	41° 29.948' N	Significant	Ash Pile/Smoker - Multiple Locations	Div W
032	123° 26.446' W	41° 30.158' N	Significant	Ash Pile/Smoker - Multiple Locations	Div W
033	123° 26.372' W	41° 30.231' N	Significant	Ash Pile/Smoker - Multiple Locations	Div W
034	123° 26.355' W	41° 30.365' N	Significant	Ash Pile/Smoker - Multiple Locations	Div W
035	123° 26.527' W	41° 30.474' N	Moderate	Scattered Heat	Div W
036	123° 26.916' W	41° 30.372' N	Moderate	Scattered Heat	Div W
037	123° 27.052' W	41° 30.251' N	Moderate	Scattered Heat	Div W
038	123° 27.217' W	41° 30.042' N	Significant	Ash Pile/Smoker - Multiple Locations	Div W
039	123° 27.565' W	41° 30.118' N	Moderate	Scattered Heat	Div W
040	123° 27.848' W	41° 29.976' N	Moderate	Scattered Heat	Div W
041	123° 26.801' W	41° 25.487' N	Significant	Stumps - Multiple Locations	Div T
042	123° 26.819' W	41° 25.326' N	Moderate	Scattered Heat	Div T
043	123° 26.862' W	41° 25.270' N	Moderate	Scattered Heat	Div T
044	123° 26.739' W	41° 25.192' N	Significant	Stumps - Multiple Locations	Div T
045	123° 26.774' W	41° 24.902' N	Significant	Stumps - Multiple Locations	Div T
046	123° 27.068' W	41° 24.720' N	Moderate	Scattered Heat	Div T
047	123° 26.888' W	41° 24.693' N	Moderate	Scattered Heat	Div T
048	123° 26.682' W	41° 24.593' N	Significant	Logs	Div T
049	123° 26.712' W	41° 24.360' N	Moderate	Scattered Heat	Div R
050	123° 26.324' W	41° 24.203' N	Significant	Ash Pile/Smoker - Multiple Locations	Div R
051	123° 26.164' W	41° 24.246' N	Significant	Stumps - Multiple Locations	Div R
052	123° 25.766' W	41° 24.255' N	Significant	Stumps - Multiple Locations	Div R
053	123° 25.542' W	41° 24.195' N	Significant	Logs	Div R
054	123° 25.331' W	41° 24.232' N	Significant	Ash Pile/Smoker - Multiple Locations	Div R
055	123° 24.857' W	41° 24.183' N	Significant	Stove Pipe	Div R
056	123° 24.688' W	41° 24.177' N	Significant	Stumps - Multiple Locations	Div R
057	123° 24.520' W	41° 24.304' N	Significant	Stumps - Multiple Locations	Div R



INFRARED MAP LEGEND

- Hot Spot - Moderate Priority (Possible Threat to Fireline)
- Hot Spot - Significant Priority (Considerable Threat to Fireline)
- Live Fire - Uncontained Spot Fire or Fire Front

GPS Coordinates are in Degrees & Decimal Minutes (DD° MM.mmmm')

Datum is WGS 84 (unless otherwise noted on map)

Ex. 34° 04.405
-118° 14.414

Date and Time is when the intelligence was gathered

Heat Sources are normally acquired within a 400 foot strip, 200 feet inside and 200 feet outside the fire line or fire front (wider strips are flown as necessary and are labeled on infrared map).

LIMITS TO INFRARED AND GPS INFORMATION

Under the best conditions heat sources less than 4 to 6 inches in diameter are inconsistent.

Very Small Heat sources under heavy canopy or in large rock piles are difficult to verify.

Accuracy of GPS coordinates is within 50 feet, 90% of the time.

Labeling Details:

