

Mill Creek 1 Fire

CA-HIA-000115

Communications Map

August 28, 2018
 appx. 3,643 acres

- Fire Points**
- Incident Command Post
 - Drop Point
 - Closure
 - Helibase
 - Repeater
 - Water Source
 - Water Tank
 - Mobile Weather Unit
 - Aerial Hazard
 - Value at Risk
 - Fire Origin
 - Other
 - Aviation Avoidance Area
- Fire Lines**
- Uncontrolled Fire Edge
 - Completed Line
 - Completed Hand Line
 - Completed Dozer Line
 - Road as Completed Line
 - Temporary Flight Restriction
- Roads**
- State Highway
 - County
 - Arterial
 - Collector
 - Local
 - Not Maintained
 - Decommissioned

Aerial Hazard

Name	Latitude	Longitude
Ht-#150'	41° 6.976' N	123° 42.635' W
Ht-#150'	41° 3.755' N	123° 41.252' W

Drop Point

Name	Latitude	Longitude
DP-1	41° 6.705' N	123° 40.290' W
DP-2	41° 8.434' N	123° 38.604' W
DP-20	41° 9.874' N	123° 41.538' W
DP-21	41° 9.168' N	123° 40.950' W
DP-23	41° 9.787' N	123° 40.642' W
DP-24	41° 9.688' N	123° 40.340' W
DP-25	41° 10.748' N	123° 42.286' W
DP-26	41° 9.659' N	123° 40.228' W
DP-30	41° 8.899' N	123° 39.264' W
DP-32	41° 10.006' N	123° 37.038' W
DP-34	41° 9.478' N	123° 37.486' W
DP-35	41° 9.045' N	123° 37.509' W
DP-36	41° 8.557' N	123° 37.743' W
DP-4	41° 9.482' N	123° 38.637' W
DP-5	41° 8.455' N	123° 41.035' W
DP-6	41° 7.423' N	123° 41.012' W
DP-7	41° 7.030' N	123° 40.856' W

Helibase

Name	Latitude	Longitude
Mill Creek 1 Helibase	41° 2.363' N	123° 40.012' W

Incident Command Post

Name	Latitude	Longitude
Mill Creek 1 ICP	41° 2.882' N	123° 40.339' W

Mobile Weather Unit

Name	Latitude	Longitude
IRAWS 32	41° 10.633' N	123° 40.336' W

Other

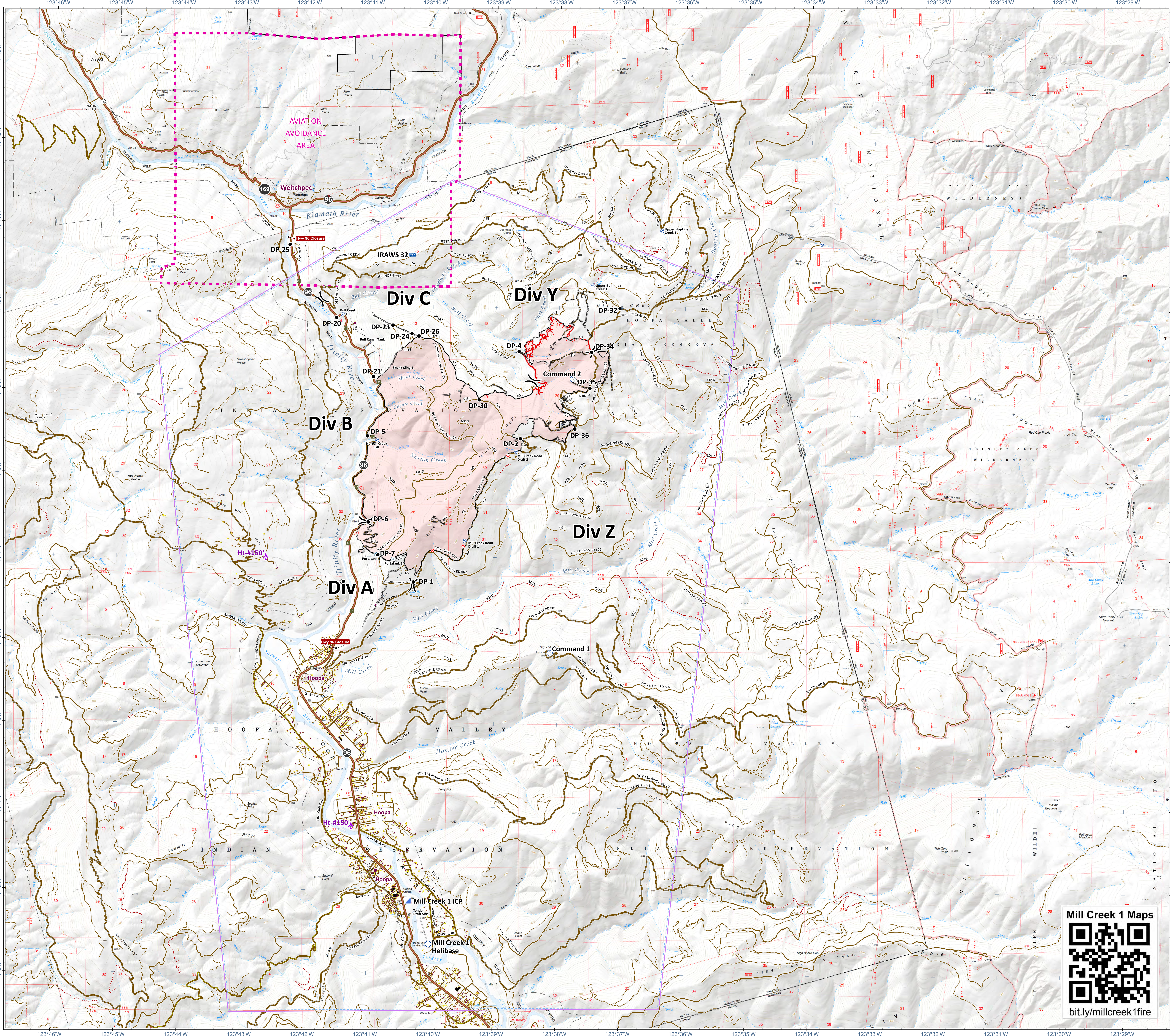
Name	Latitude	Longitude
"The Lookout" Parking Area	41° 8.892' N	123° 37.965' W
Wire Checkpoint	41° 5.991' N	123° 42.222' W

Repeater

Name	Latitude	Longitude
Command 1	41° 5.865' N	123° 38.115' W
Command 2	41° 9.157' N	123° 37.781' W

Value at Risk

Name	Latitude	Longitude
Structure	41° 9.809' N	123° 41.247' W
Structure	41° 6.429' N	123° 40.883' W



Mill Creek 1 Maps

bit.ly/millcreek1fire