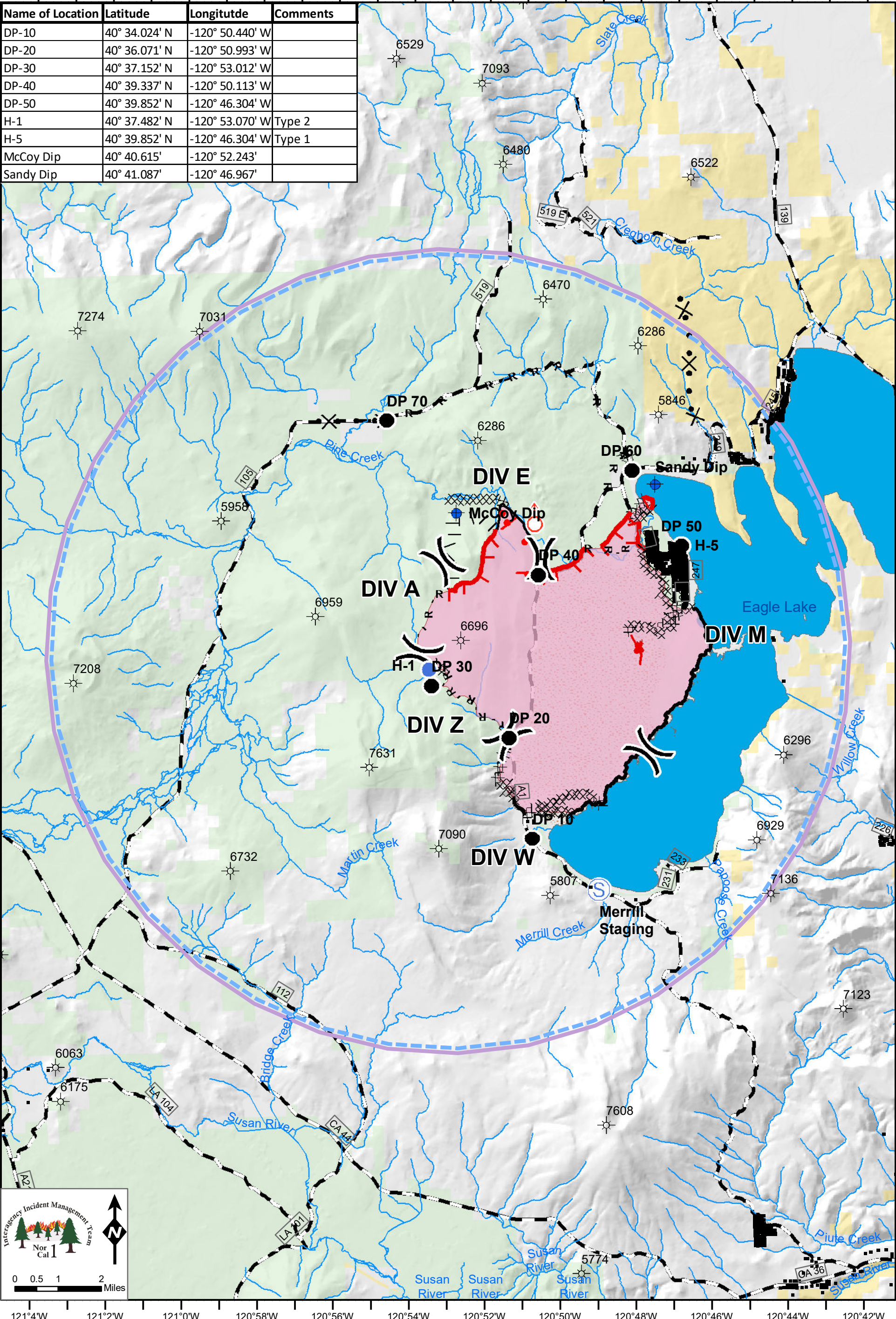


121°3'W 121°1'W 120°59'W 120°57'W 120°55'W 120°53'W 120°51'W 120°49'W 120°47'W 120°45'W 120°43'W 120°41'W

Name of Location	Latitude	Longitude	Comments
DP-10	40° 34.024' N	-120° 50.440' W	
DP-20	40° 36.071' N	-120° 50.993' W	
DP-30	40° 37.152' N	-120° 53.012' W	
DP-40	40° 39.337' N	-120° 50.113' W	
DP-50	40° 39.852' N	-120° 46.304' W	
H-1	40° 37.482' N	-120° 53.070' W	Type 2
H-5	40° 39.852' N	-120° 46.304' W	Type 1
McCoy Dip	40° 40.615'	-120° 52.243'	
Sandy Dip	40° 41.087'	-120° 46.967'	



**AIR OPS MAP**  
**WHALEBACK**  
**CA-LNF-3951**  
**AUGUST 1, 2018**  
**DAY SHIFT**  
**17,860 ACRES**  
**AS OF 7/31 @ 2109**

TFR	Uncontrolled Fire Edge	Proposed Burnout	Drop Point	Brockman Flats
Wildfire Daily Fire Perimeter	Completed Line	Active Burnout	Staging Area	BLM
Completed Dozer Line	Road as Completed Line	Proposed Dozer Line	FS	Mountain Peak
			Division Break	