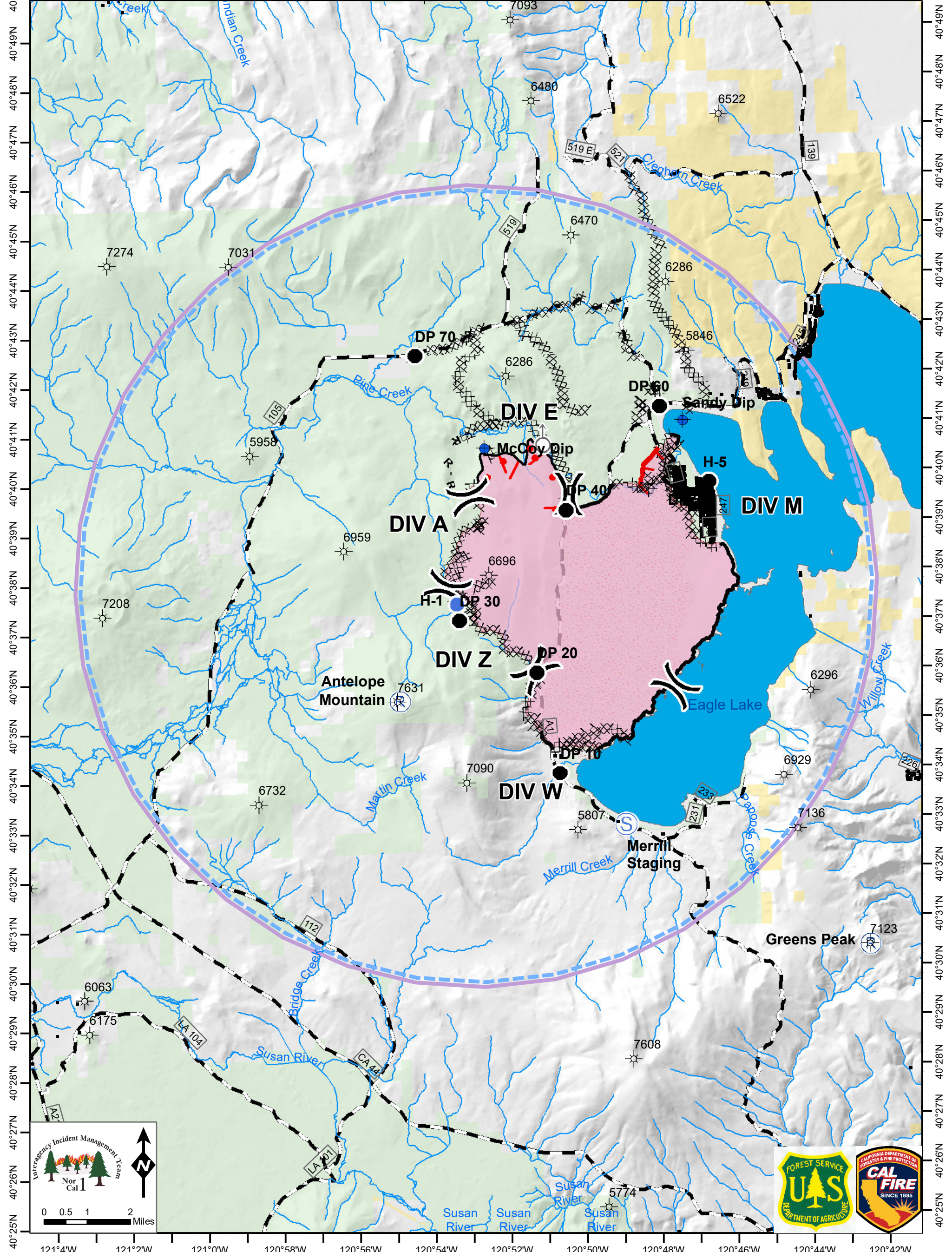


121°3'W 121°1'W 120°59'W 120°57'W 120°55'W 120°53'W 120°51'W 120°49'W 120°47'W 120°45'W 120°43'W 120°41'W

Name of Location	DP-10	DP-20	DP-30	DP-40	DP-50	DP-60	DP-70	H-1	H-5	McCoy Dip	Sandy Dip
Latitude	40° 34.024' N	40° 36.071' N	40° 37.152' N	40° 39.337' N	40° 39.852' N	40° 41.394'	40° 42.518'	40° 37.482' N	40° 39.852' N	40° 40.615'	40° 41.087'
Longitude	-120° 50.440' W	-120° 50.993' W	-120° 53.012' W	-120° 50.113' W	-120° 46.304' W	-120° 47.573'	-120° 54.026'	-120° 53.070' W	-120° 46.304' W	-120° 52.243'	-120° 46.967'
Comments								Type 2	Type 1		



AIR OPS MAP  
 WHALEBACK  
 CA-LNF-3951  
 AUGUST 3, 2018  
 DAY SHIFT  
 18,726 ACRES  
 AS OF 8/2 @ 2106

- TFR
- Wildfire Daily Fire Perimeter
- Uncontrolled Fire Edge
- Completed Line
- Completed Dozer Line
- Road as Completed Line
- Active Burnout
- Mountain Peak
- Drop Point
- Staging Area
- Division Break
- Brockman Flats
- BLM
- FS



121°4'W 121°2'W 121°0'W 120°58'W 120°56'W 120°54'W 120°52'W 120°50'W 120°48'W 120°46'W 120°44'W 120°42'W

40°51'N  
40°50'N  
40°49'N  
40°48'N  
40°47'N  
40°46'N  
40°45'N  
40°44'N  
40°43'N  
40°42'N  
40°41'N  
40°40'N  
40°39'N  
40°38'N  
40°37'N  
40°36'N  
40°35'N  
40°34'N  
40°33'N  
40°32'N  
40°31'N  
40°30'N  
40°29'N  
40°28'N  
40°27'N  
40°26'N  
40°25'N

40°50'N  
40°49'N  
40°48'N  
40°47'N  
40°46'N  
40°45'N  
40°44'N  
40°43'N  
40°42'N  
40°41'N  
40°40'N  
40°39'N  
40°38'N  
40°37'N  
40°36'N  
40°35'N  
40°34'N  
40°33'N  
40°32'N  
40°31'N  
40°30'N  
40°29'N  
40°28'N  
40°27'N  
40°26'N  
40°25'N