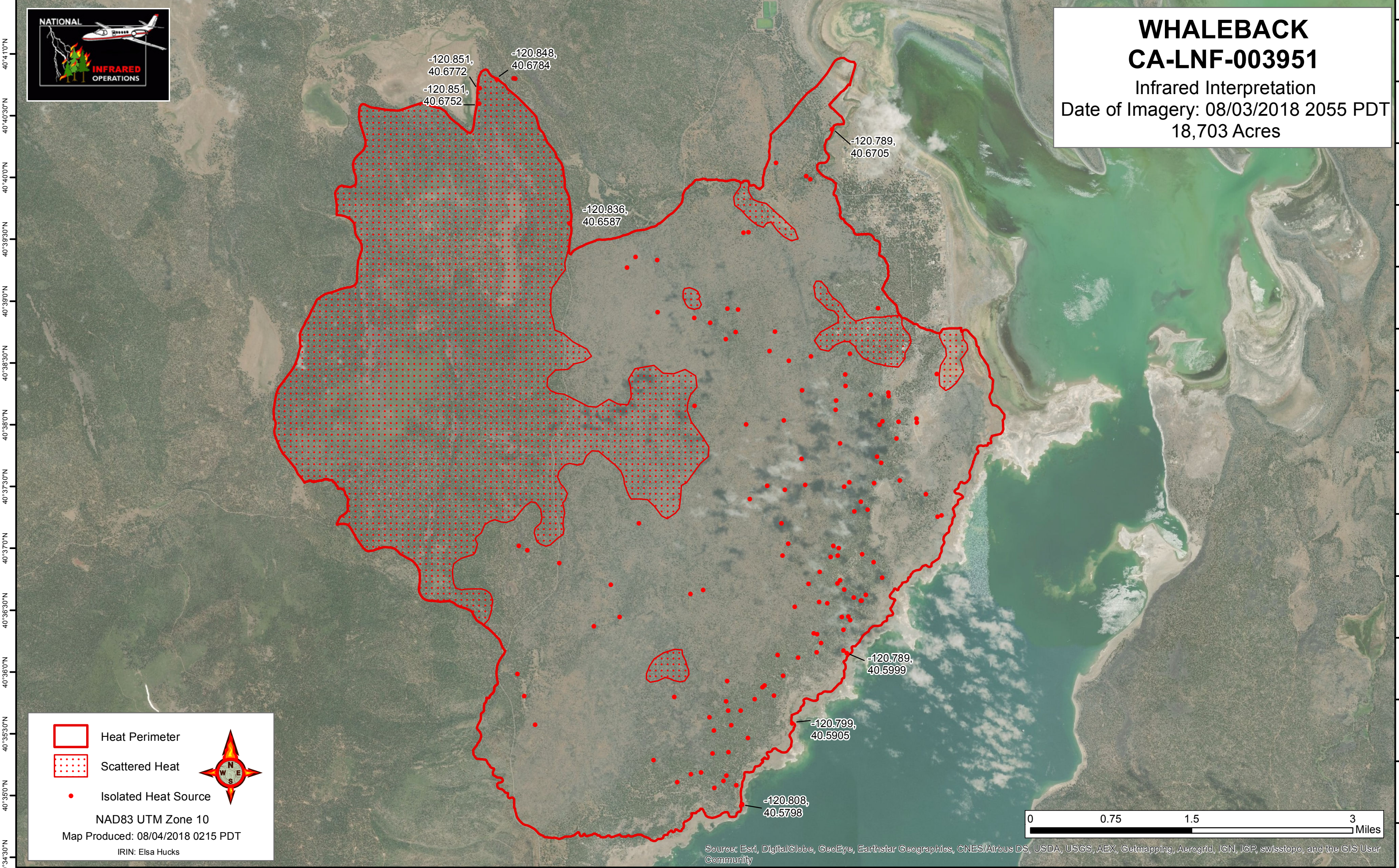





120°55'30"W 120°55'0"W 120°54'30"W 120°54'0"W 120°53'30"W 120°53'0"W 120°52'30"W 120°52'0"W 120°51'30"W 120°51'0"W 120°50'30"W 120°50'0"W 120°49'30"W 120°49'0"W 120°48'30"W 120°48'0"W 120°47'30"W 120°47'0"W 120°46'30"W 120°46'0"W 120°45'30"W 120°45'0"W 120°44'30"W 120°44'0"W 120°43'30"W 120°43'0"W 120°42'30"W 120°42'0"W 120°41'30"W


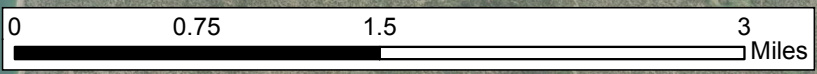


WHALEBACK
CA-LNF-003951
Infrared Interpretation
Date of Imagery: 08/03/2018 2055 PDT
18,703 Acres



-  Heat Perimeter
-  Scattered Heat
-  Isolated Heat Source

NAD83 UTM Zone 10
Map Produced: 08/04/2018 0215 PDT
IRIN: Elsa Hucks

Source: Esri, DigitalGlobe, GeoEye, Earthstar Geographics, CNES/Airbus DS, USDA, USGS, AEX, Getmapping, Aerogrid, IGN, IGP, swisstopo, and the GIS User Community

120°56'0"W 120°55'30"W 120°55'0"W 120°54'30"W 120°54'0"W 120°53'30"W 120°53'0"W 120°52'30"W 120°52'0"W 120°51'30"W 120°51'0"W 120°50'30"W 120°50'0"W 120°49'30"W 120°49'0"W 120°48'30"W 120°48'0"W 120°47'30"W 120°47'0"W 120°46'30"W 120°46'0"W 120°45'30"W 120°45'0"W 120°44'30"W 120°44'0"W 120°43'30"W 120°43'0"W 120°42'30"W 120°42'0"W