

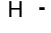








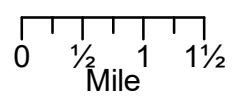
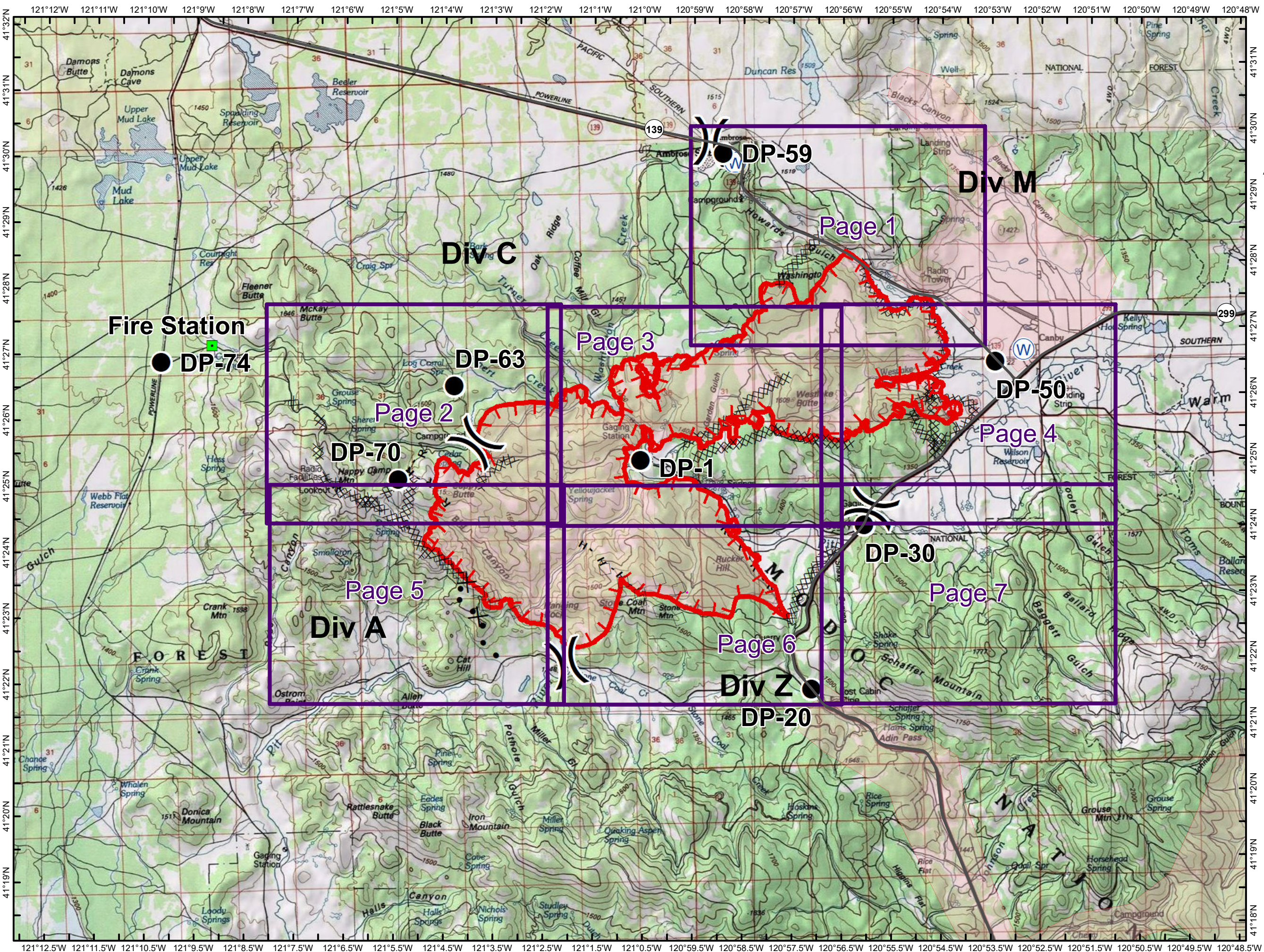


IAP Map
Stone Fire
CA-MDF-001193
Modoc National Forest

8/19/2018 Day Shift
Acres 16,123 Sketch 8/18 2200

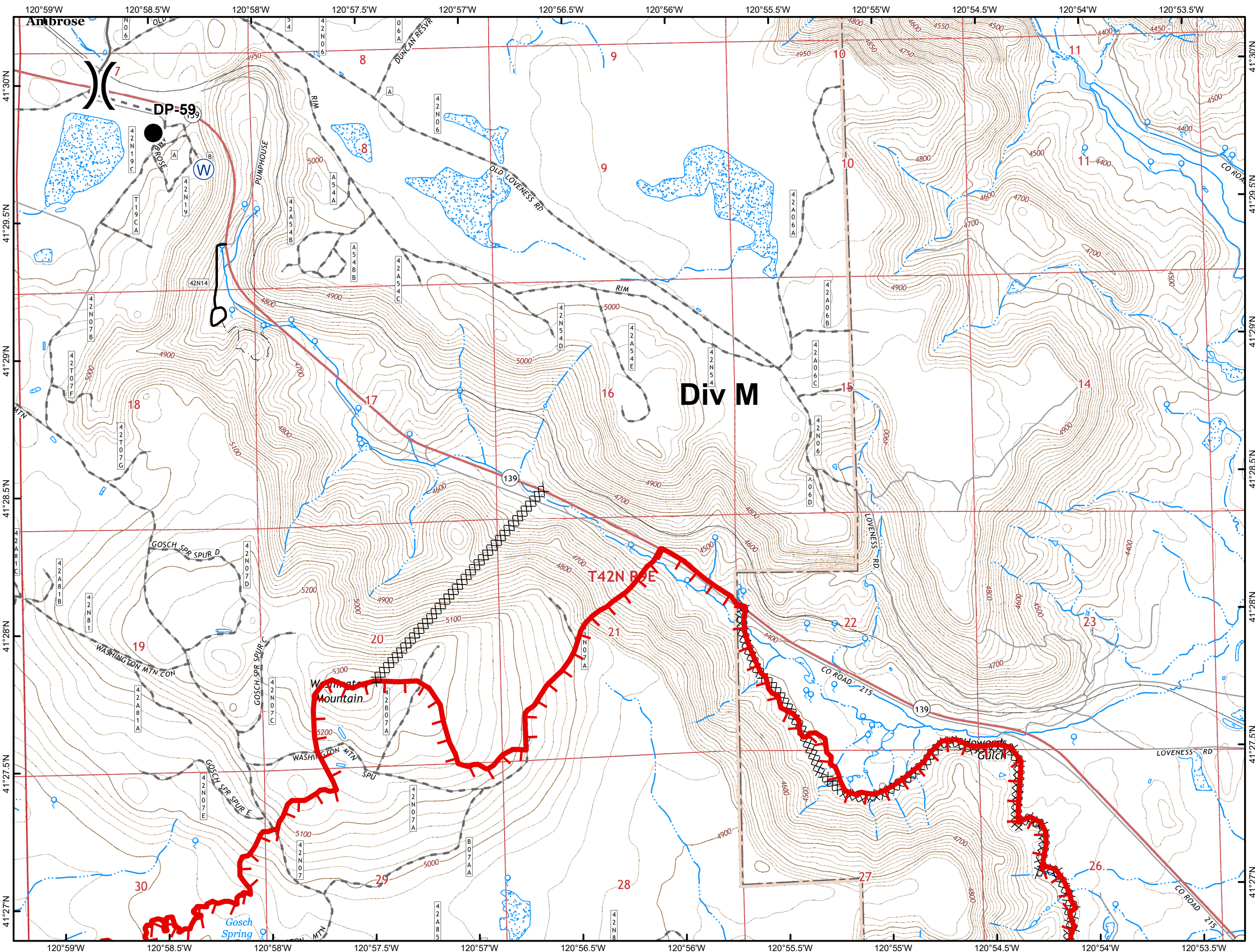
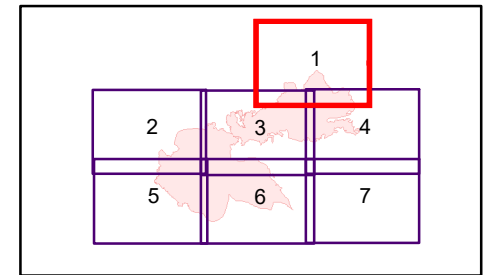
-  Uncontrolled Fire Edge
-  Completed Dozer Line
-  H - H Completed Hand Line
-  R - R Road as Completed Line
-  Proposed Dozer Line
-  Aerial Retardant Drop
-  Unknown
-  Drop Point
-  Landmark
-  Water Source
-  Division Break



**IAP Map
Stone Fire
CA-MDF-001193
Modoc National Forest**

**8/19/2018 Day Shift
Acres 16,123 081818 @ 2200**

Page 1 of 7

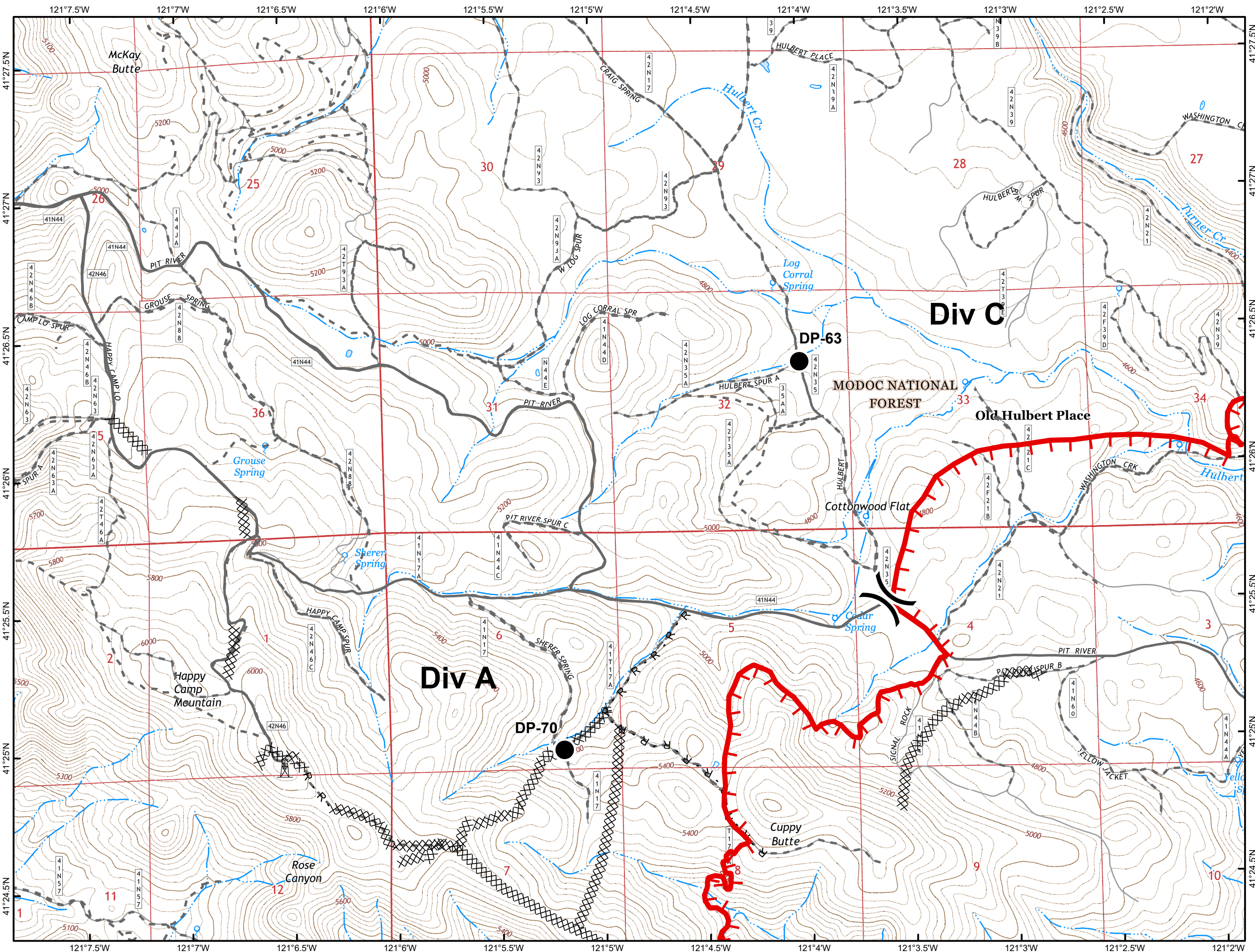
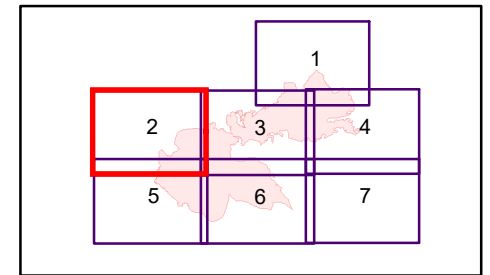


- Drop Point
- Water Source
- Division Break
- Uncontrolled Fire Edge
- Completed Dozer Line
- Roads & Trails**
 - Road
 - Improved Road
 - Unimproved Road
 - Trails

**IAP Map
Stone Fire
CA-MDF-001193
Modoc National Forest**

**8/19/2018 Day Shift
Acres 16,123 081818 @ 2200**

Page 2 of 7

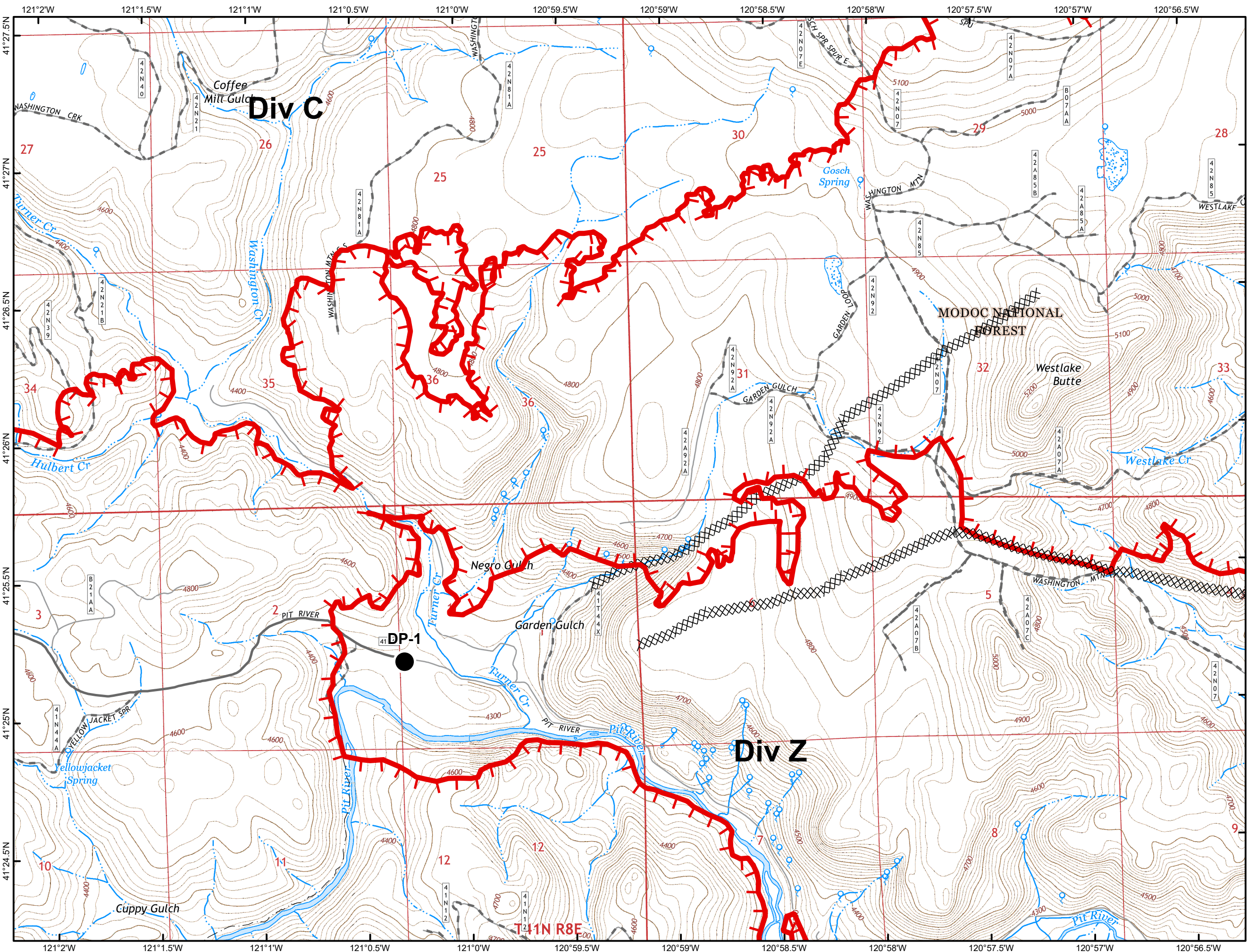
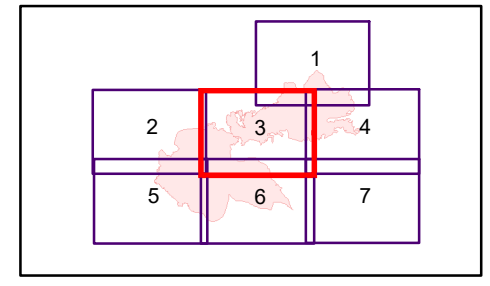


- Drop Point
- Division Break
- Uncontrolled Fire Edge
- Completed Dozer Line
- R - R Road as Completed Line
- Aerial Retardant Drop
- Lookout
- Roads & Trails**
 - Improved Road
 - Unimproved Road

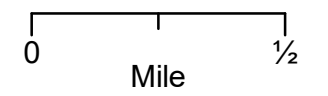
**IAP Map
Stone Fire
CA-MDF-001193
Modoc National Forest**

**8/19/2018 Day Shift
Acres 16,123 081818 @ 2200**

Page 3 of 7



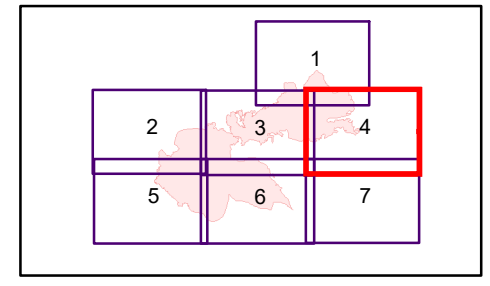
- Drop Point
- ┃ Uncontrolled Fire Edge
- XXXXX Completed Dozer Line
- Roads & Trails**
- Improved Road
- - - Unimproved Road
- Trails



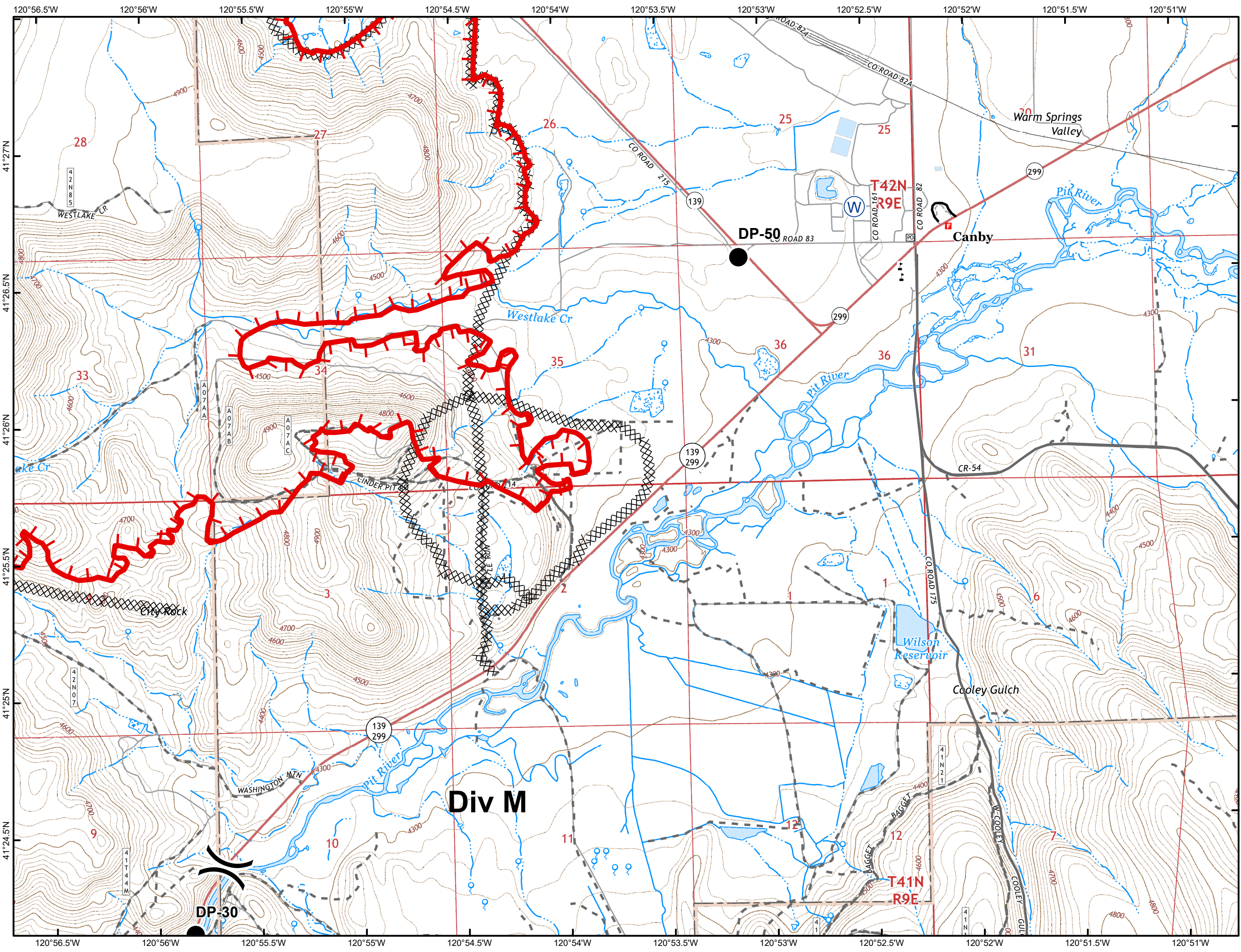
**IAP Map
Stone Fire
CA-MDF-001193
Modoc National Forest**

**8/19/2018 Day Shift
Acres 16,123 081818 @ 2200**

Page 4 of 7



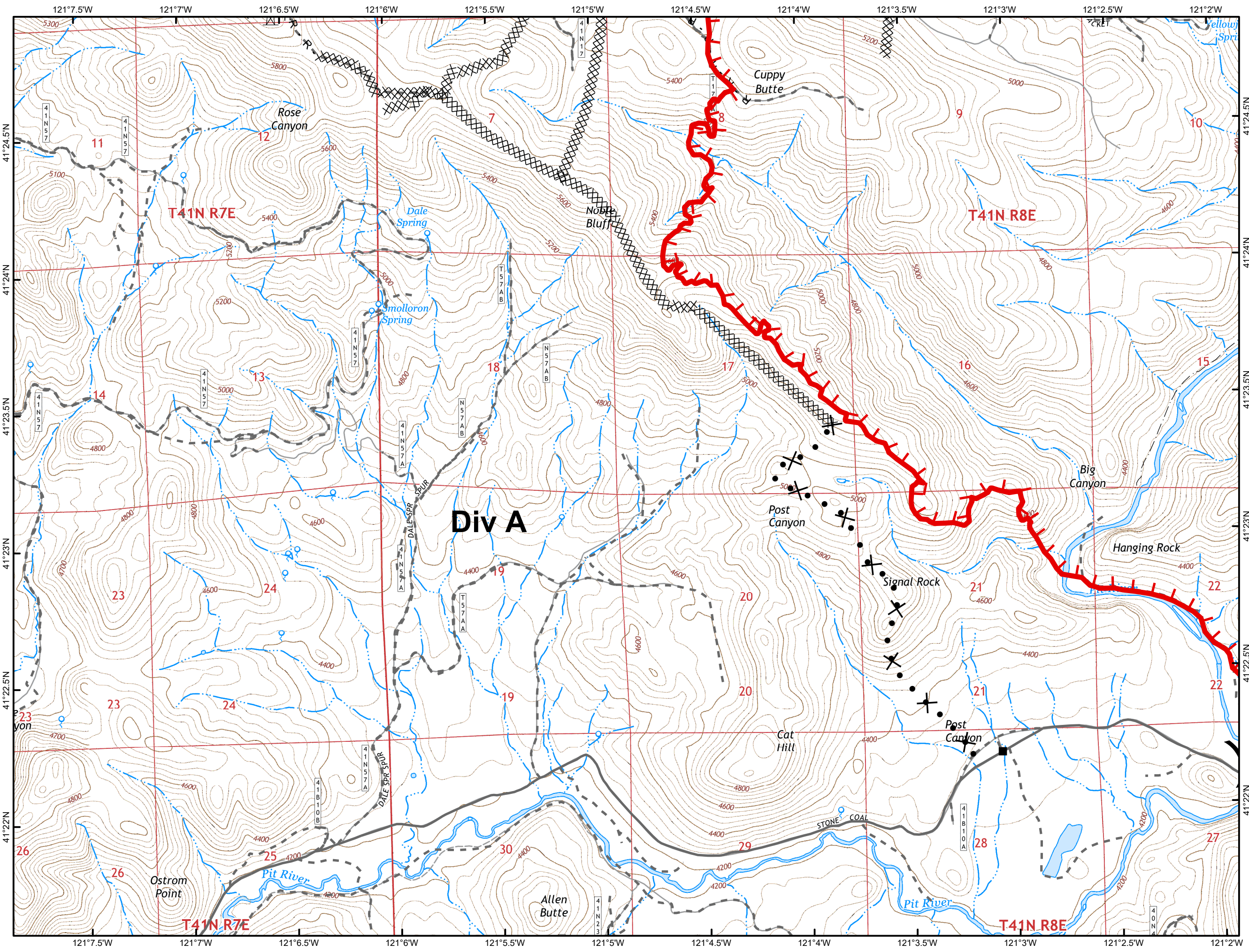
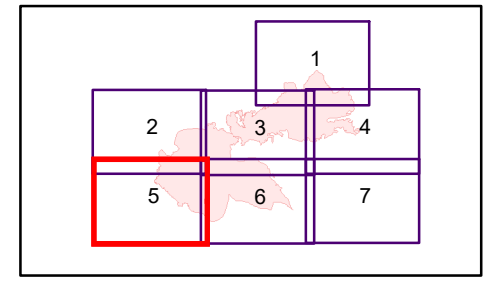
- Drop Point
- Water Source
- Division Break
- Uncontrolled Fire Edge
- Completed Dozer Line
- Roads & Trails**
- Road
- Unimproved Road



**IAP Map
Stone Fire
CA-MDF-001193
Modoc National Forest**

**8/19/2018 Day Shift
Acres 16,123 081818 @ 2200**

Page 5 of 7



- Structures
-) Division Break
- ┌ Uncontrolled Fire Edge
- XXXXX Completed Dozer Line
- R - R Road as Completed Line
- ⊗ • Proposed Dozer Line
- Aerial Retardant Drop
- 🗨 Lookout
- Roads & Trails**
- - - Unimproved Road
- Trails

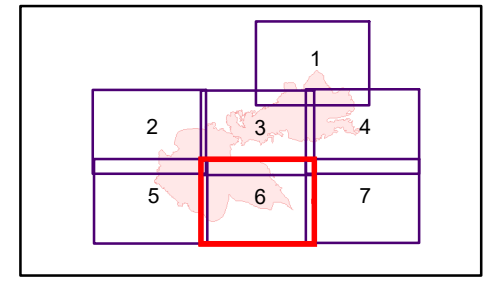
0 Mile 1/2

8/18/2018 11:51:45 PM
IAP_11X17_201808_stone_CA_MDF_001193.mxd

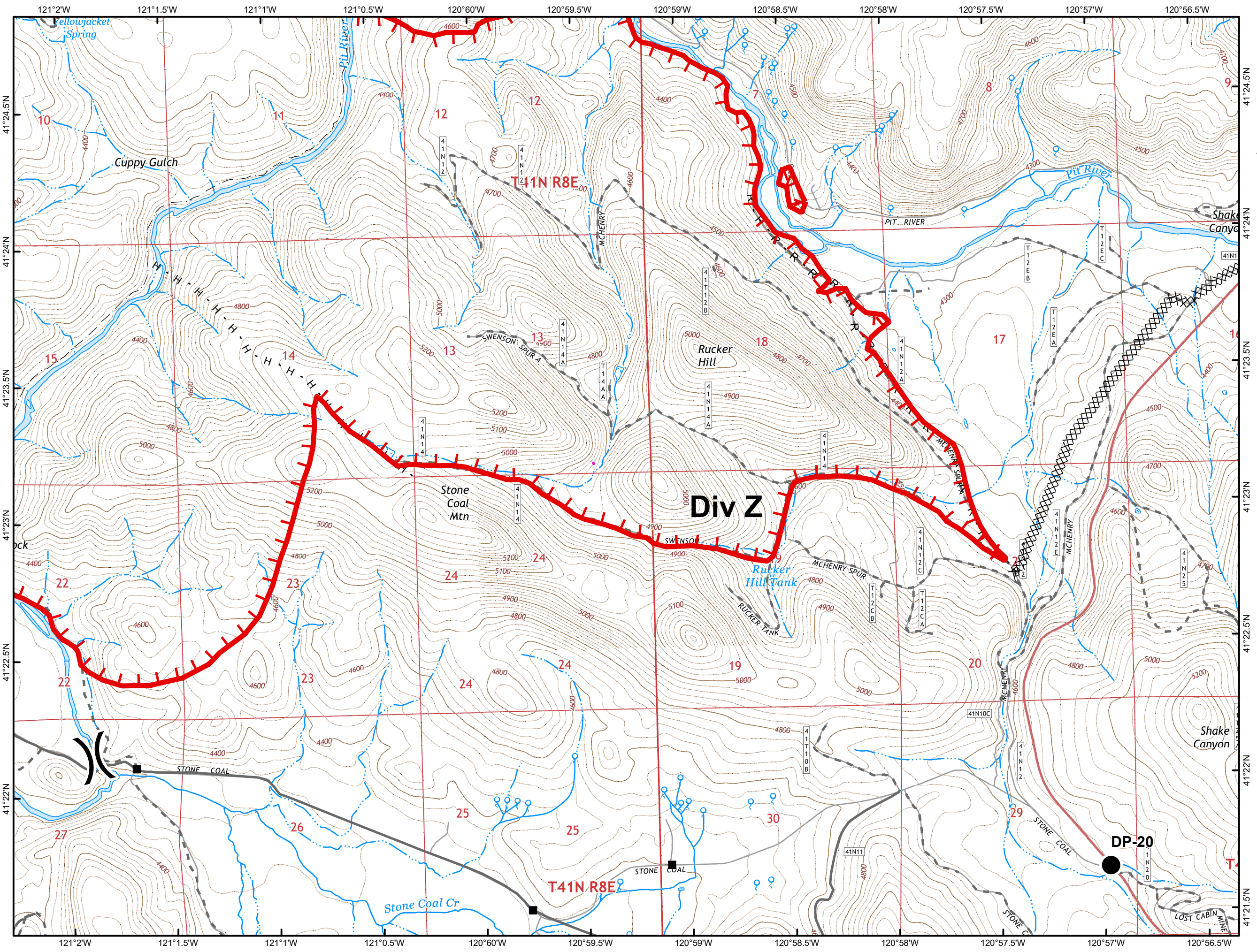
**IAP Map
Stone Fire
CA-MDF-001193
Modoc National Forest**

**8/19/2018 Day Shift
Acres 16,123 081818 @ 2200**

Page 6 of 7

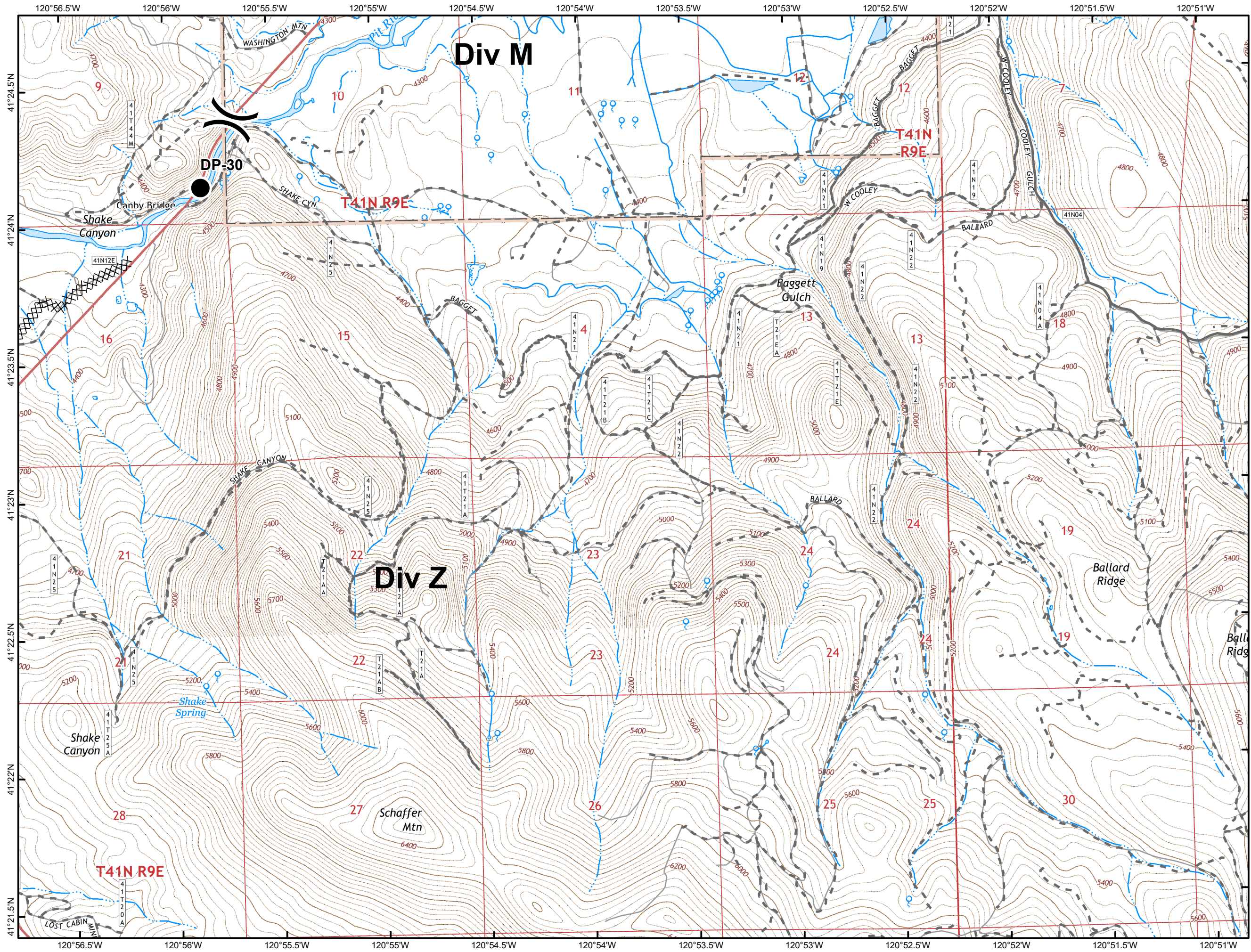


- Structures
- Drop Point
- ⌋ Division Break
- ┌ Uncontrolled Fire Edge
- XXXXX Completed Dozer Line
- H · H Completed Hand Line
- R · R Road as Completed Line
- Aerial Retardant Drop
- Unknown
- Roads & Trails**
- Improved Road
- - - Unimproved Road
- · · Trails



0 Mile 1/2

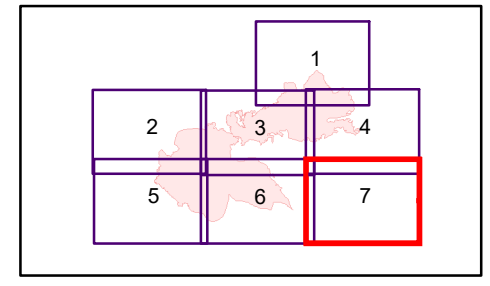
8/18/2018 11:51:45 PM
IAP_11X17_201808_stone_CA_MDF_001193.mxd



**IAP Map
Stone Fire
CA-MDF-001193
Modoc National Forest**

**8/19/2018 Day Shift
Acres 16,123 081818 @ 2200**

Page 7 of 7



-  Drop Point
-  Division Break
-  Completed Dozer Line
- Roads & Trails**
-  Unimproved Road