



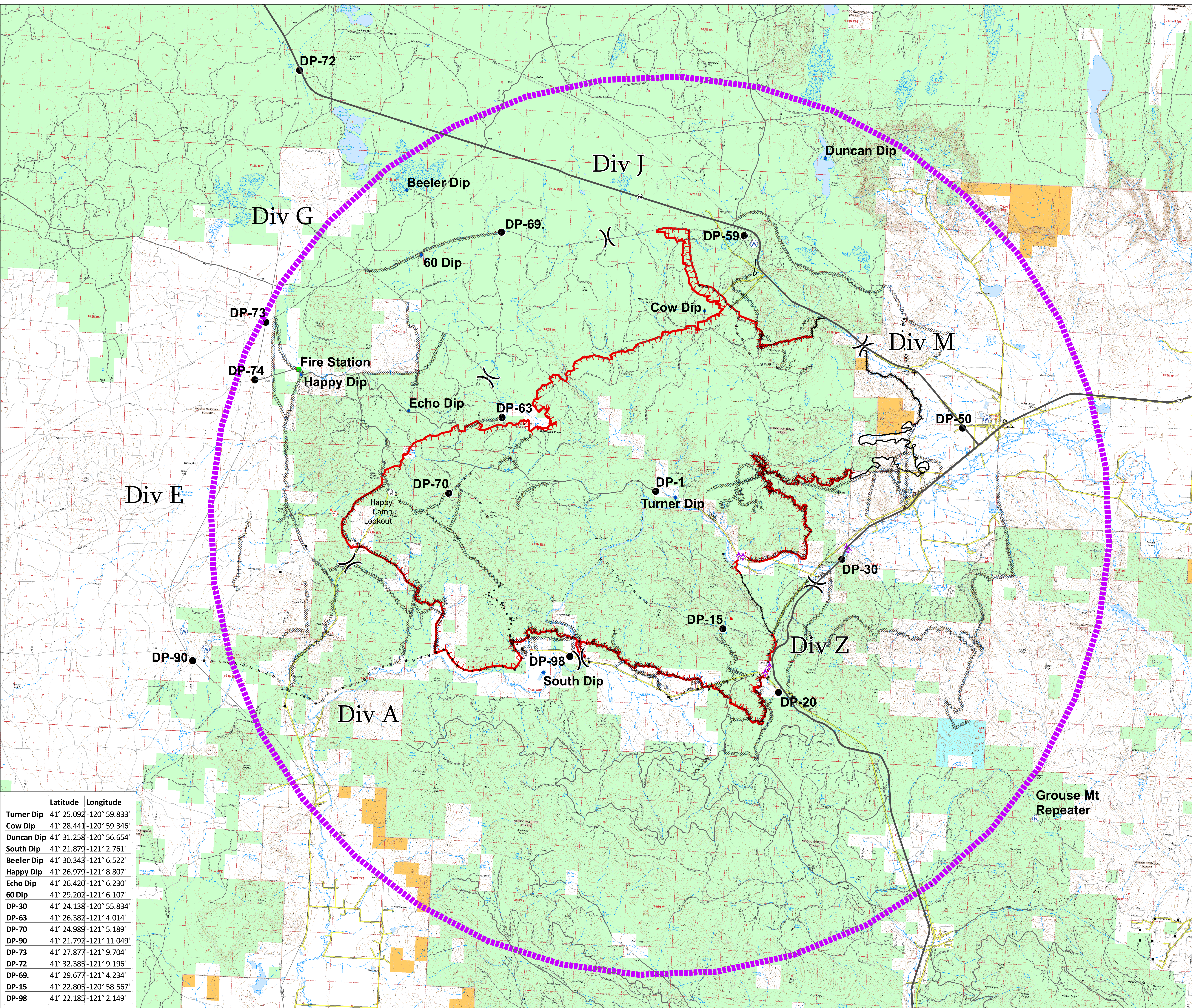
Air Operations Map
Stone Fire

33,941 Acres
IR Mapping:
8/22 17:30

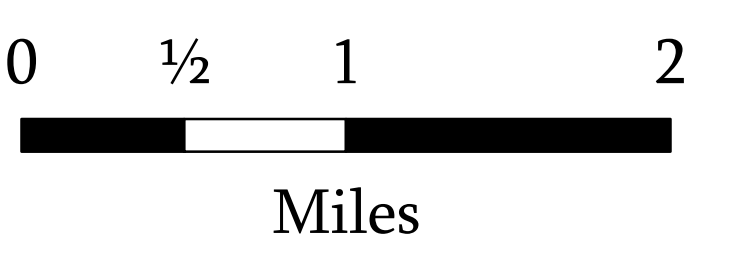
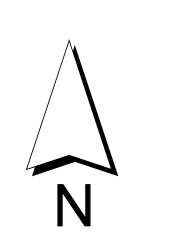
CA-MDF-001193

August 23, 2018

- Aerial Hazard
- Dip Site
- Drop Point
- Landmark
- Repeater
- Spot Fire
- Water Source
- Division Break
- Lookout
- Structures
- Uncontrolled Fire Edge
- Controlled Line
- Completed Dozer Line
- Completed Hand Line
- Road as Completed Line
- Proposed Dozer Line
- Aerial Retardant Drop
- Transmission Lines
- Ownership**
- Bureau of Land Management
- US Forest Service
- State
- Private



	Latitude	Longitude
Turner Dip	41° 25.092'-120° 59.833'	
Cow Dip	41° 28.441'-120° 59.346'	
Duncan Dip	41° 31.258'-120° 56.654'	
South Dip	41° 21.879'-121° 2.761'	
Beeler Dip	41° 30.343'-121° 6.522'	
Happy Dip	41° 26.979'-121° 8.807'	
Echo Dip	41° 26.420'-121° 6.230'	
60 Dip	41° 29.202'-121° 6.107'	
DP-30	41° 24.138'-120° 55.834'	
DP-63	41° 26.382'-121° 4.014'	
DP-70	41° 24.989'-121° 5.189'	
DP-90	41° 21.792'-121° 11.049'	
DP-73	41° 27.877'-121° 9.704'	
DP-72	41° 32.385'-121° 9.196'	
DP-69	41° 29.677'-121° 4.234'	
DP-15	41° 22.805'-120° 58.567'	
DP-98	41° 22.185'-121° 2.149'	



NAD 1983 UTM zone 10N