

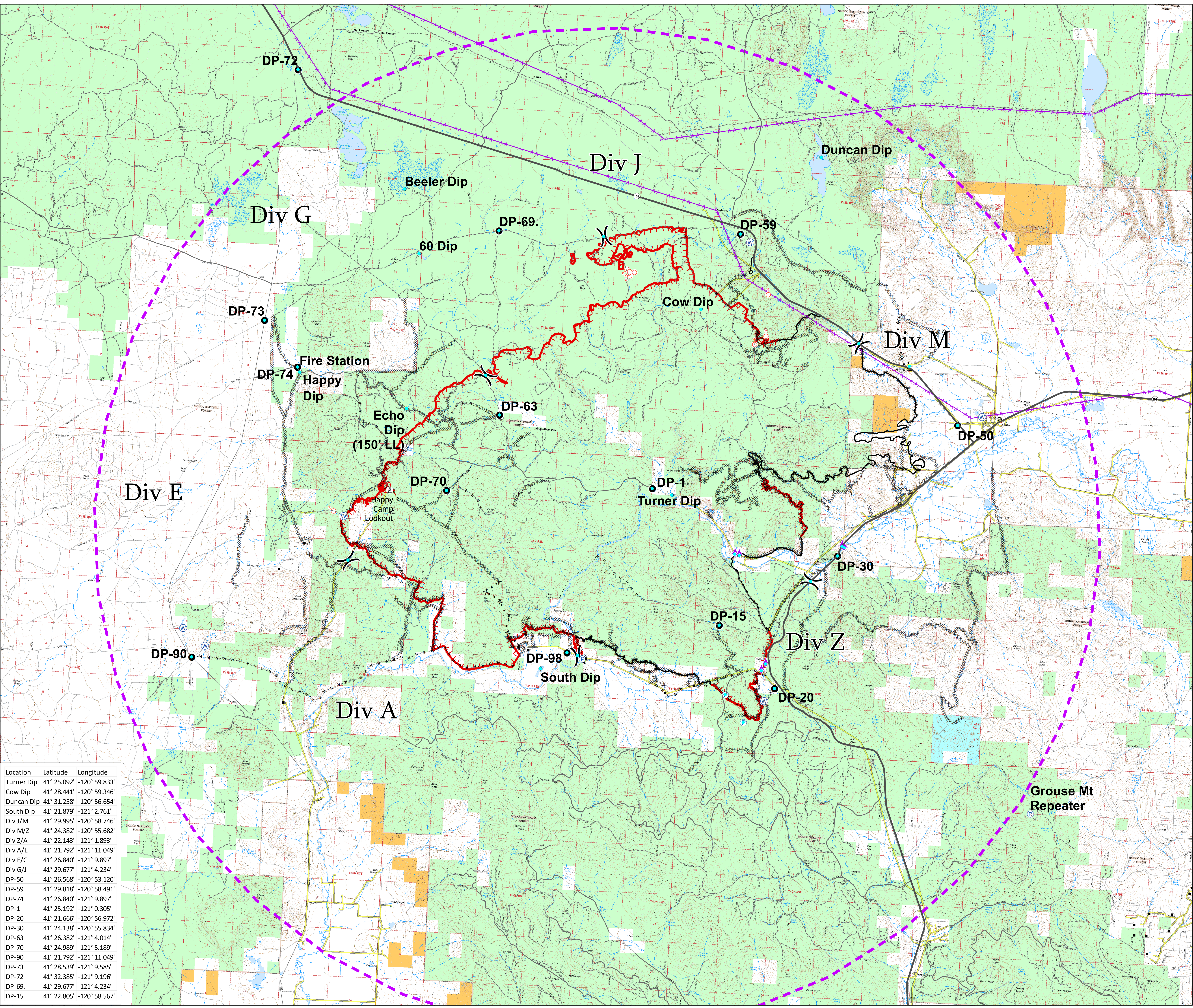


Air Operations Map
Stone Fire

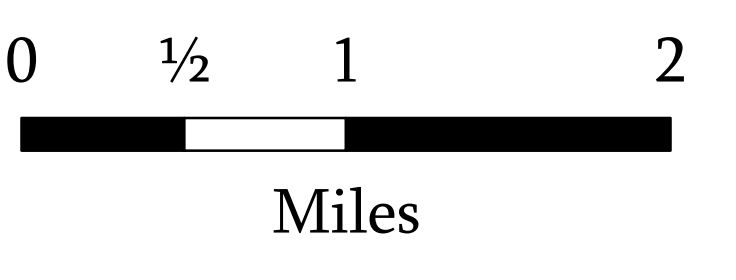
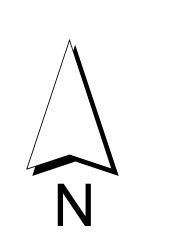
38,188 Acres
IR Mapping:
8/23 23:43
CA-MDF-001193

August 24, 2018

- Aerial Hazard
 - Dip Site
 - Drop Point
 - Gate
 - Landmark
 - Pump
 - Repeater
 - Spot Fire
 - Water Source
 - Division Break
 - Lookout
 - Structures
 - Uncontrolled Fire Edge
 - Controlled Line
 - Completed Dozer Line
 - Completed Hand Line
 - Road as Completed Line
 - Proposed Dozer Line
 - Aerial Hazard
 - Aerial Retardant Drop
 - Transmission Lines
- Ownership**
- Bureau of Land Management
 - US Forest Service
 - State
 - Private



Location	Latitude	Longitude
Turner Dip	41° 25.092'	-120° 59.833'
Cow Dip	41° 28.441'	-120° 59.346'
Duncan Dip	41° 31.258'	-120° 56.654'
South Dip	41° 21.879'	-121° 2.761'
Div J/M	41° 29.995'	-120° 58.746'
Div M/Z	41° 24.382'	-120° 55.682'
Div Z/A	41° 22.143'	-121° 1.893'
Div A/E	41° 21.792'	-121° 11.049'
Div E/G	41° 26.840'	-121° 9.897'
Div G/J	41° 29.677'	-121° 4.234'
DP-50	41° 26.568'	-120° 53.120'
DP-59	41° 29.818'	-120° 58.491'
DP-74	41° 26.840'	-121° 9.897'
DP-1	41° 25.192'	-121° 0.305'
DP-20	41° 21.666'	-120° 56.972'
DP-30	41° 24.138'	-120° 55.834'
DP-63	41° 26.382'	-121° 4.014'
DP-70	41° 24.989'	-121° 5.189'
DP-90	41° 21.792'	-121° 11.049'
DP-73	41° 28.539'	-121° 9.585'
DP-72	41° 32.385'	-121° 9.196'
DP-69	41° 29.677'	-121° 4.234'
DP-15	41° 22.805'	-120° 58.567'



NAD 1983 UTM zone 10N