



**Air Operations Map**  
**Stone Fire**

38,467 Acres  
IR Mapping:  
8/24 22:36

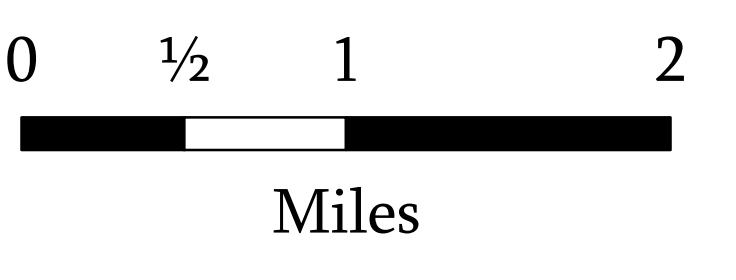
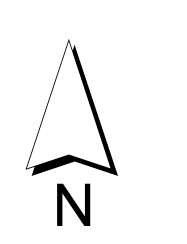
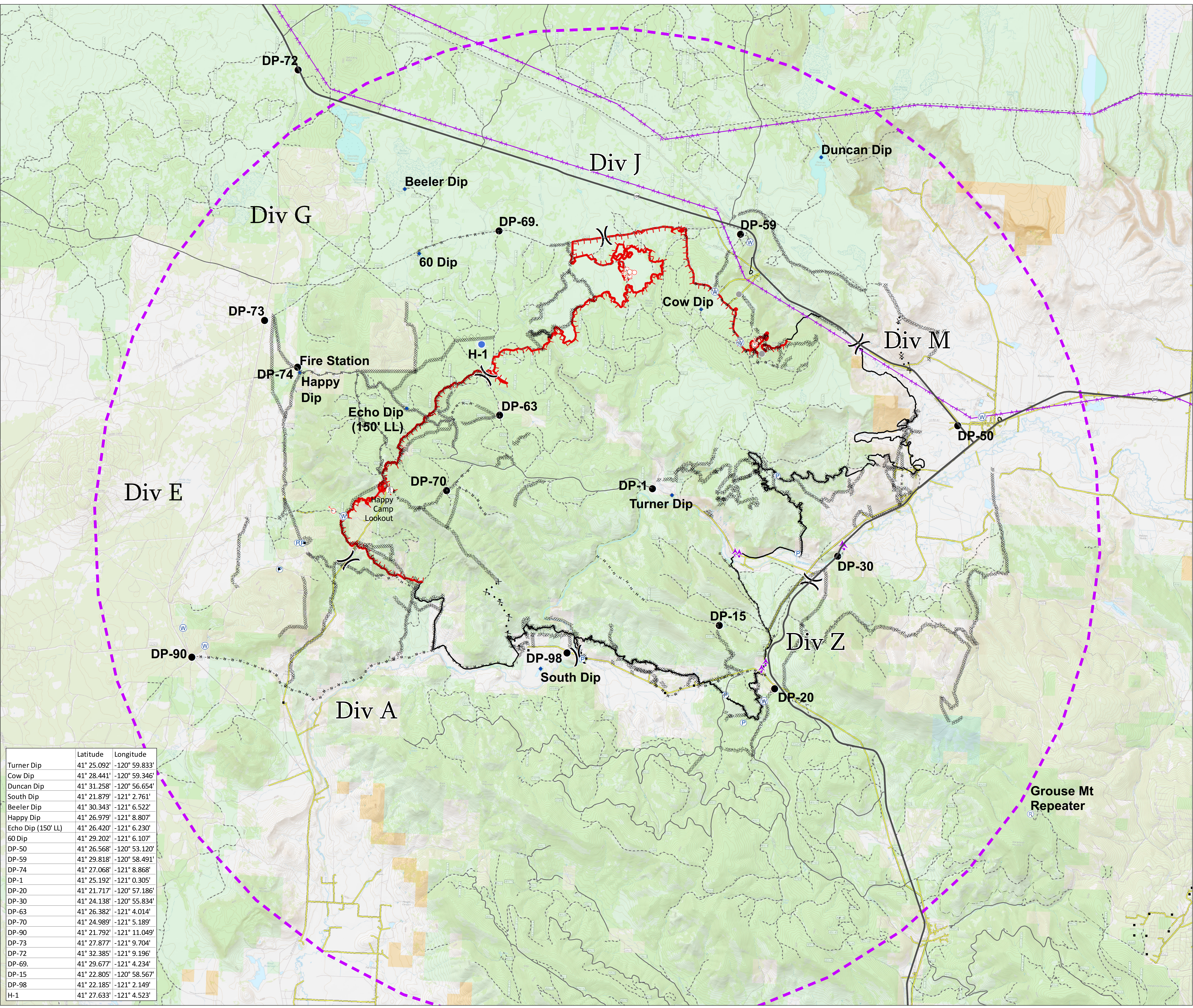
CA-MDF-001193

August 25, 2018

- Aerial Hazard
- Dip Site
- Drop Point
- Gate
- Helispot
- Landmark
- Pump
- Repeater
- Spot Fire
- Water Source
- Unknown
- Other
- Division Break
- Lookout
- Structures
- Uncontrolled Fire Edge
- Controlled Line
- Completed Dozer Line
- Completed Hand Line
- Road as Completed Line
- Proposed Dozer Line
- Aerial Hazard
- Aerial Retardant Drop
- Transmission Lines

- Ownership**
- Bureau of Land Management
  - US Forest Service
  - State
  - Private

	Latitude	Longitude
Turner Dip	41° 25.092'	-120° 59.833'
Cow Dip	41° 28.441'	-120° 59.346'
Duncan Dip	41° 31.258'	-120° 56.654'
South Dip	41° 21.879'	-121° 2.761'
Beeler Dip	41° 30.343'	-121° 6.522'
Happy Dip	41° 26.979'	-121° 8.807'
Echo Dip (150' LL)	41° 26.420'	-121° 6.230'
60 Dip	41° 29.202'	-121° 6.107'
DP-50	41° 26.568'	-120° 53.120'
DP-59	41° 29.818'	-120° 58.491'
DP-74	41° 27.068'	-121° 8.868'
DP-1	41° 25.192'	-121° 0.305'
DP-20	41° 21.717'	-120° 57.186'
DP-30	41° 24.138'	-120° 55.834'
DP-63	41° 26.382'	-121° 4.014'
DP-70	41° 24.989'	-121° 5.189'
DP-90	41° 21.792'	-121° 11.049'
DP-73	41° 27.877'	-121° 9.704'
DP-72	41° 32.385'	-121° 9.196'
DP-69	41° 29.677'	-121° 4.234'
DP-15	41° 22.805'	-120° 58.567'
DP-98	41° 22.185'	-121° 2.149'
H-1	41° 27.633'	-121° 4.523'



NAD 1983 UTM zone 10N