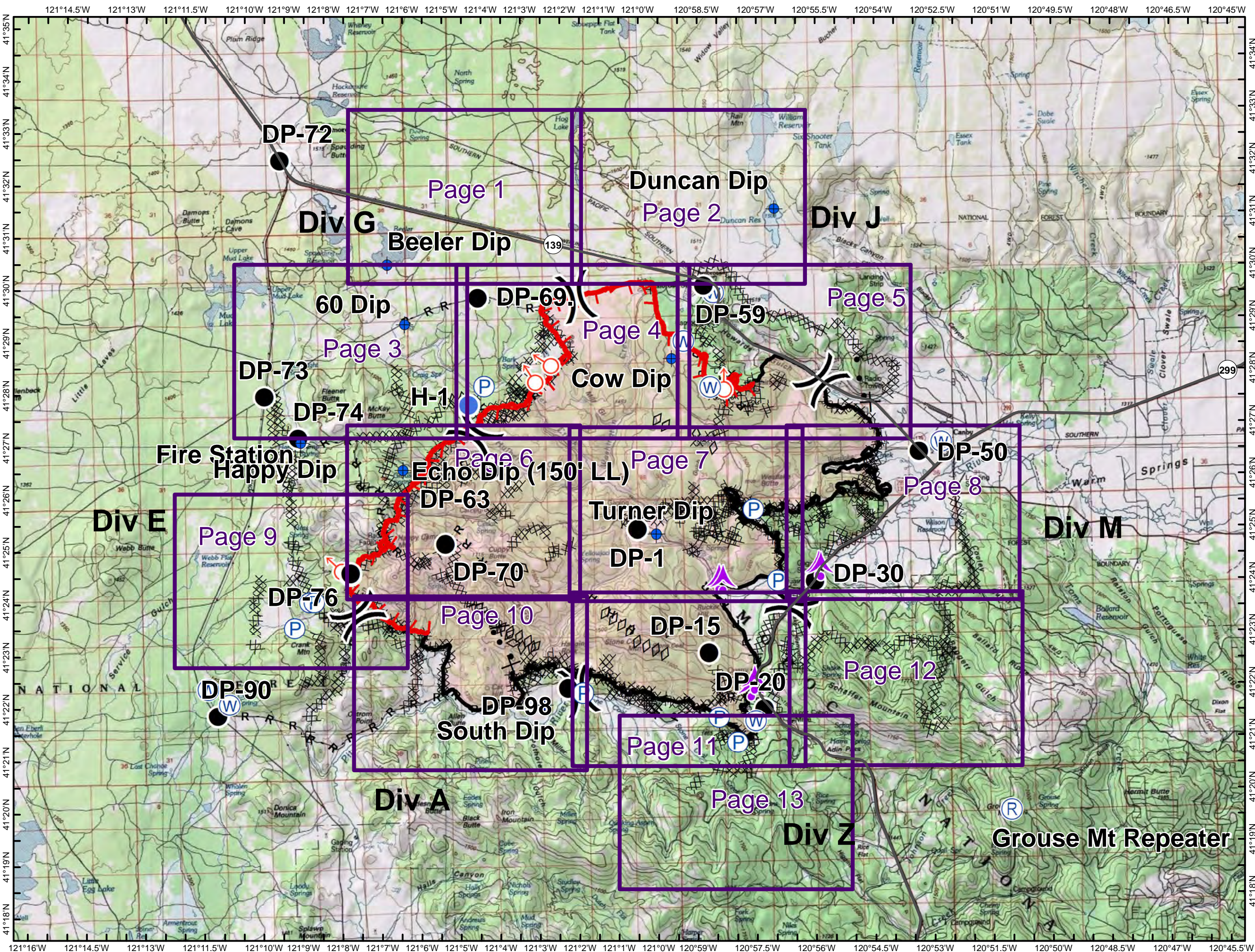
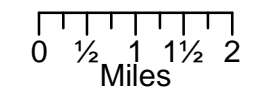
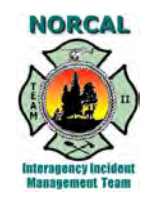


IAP Map
Stone Fire
CA-MDF-001193
Modoc National Forest

8/26/2018
39,386 Acres 8/25 @ 2323



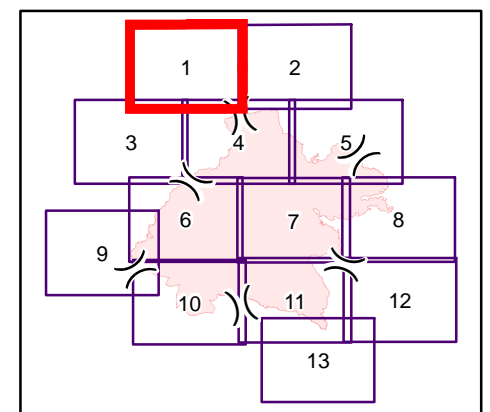
- Aerial Hazard
- Dip Site
- Drop Point
- Helispot
- Landmark
- Pump
- Repeater
- Spot Fire
- Water Source
- Division Break
- Uncontrolled Fire Edge
- Completed Line
- Completed Dozer Line
- H - H Completed Hand Line
- R - R Road as Completed Line
- Proposed Dozer Line
- Aerial Retardant Drop



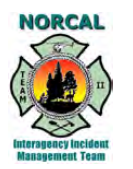
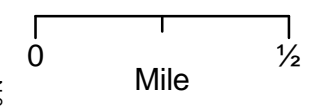
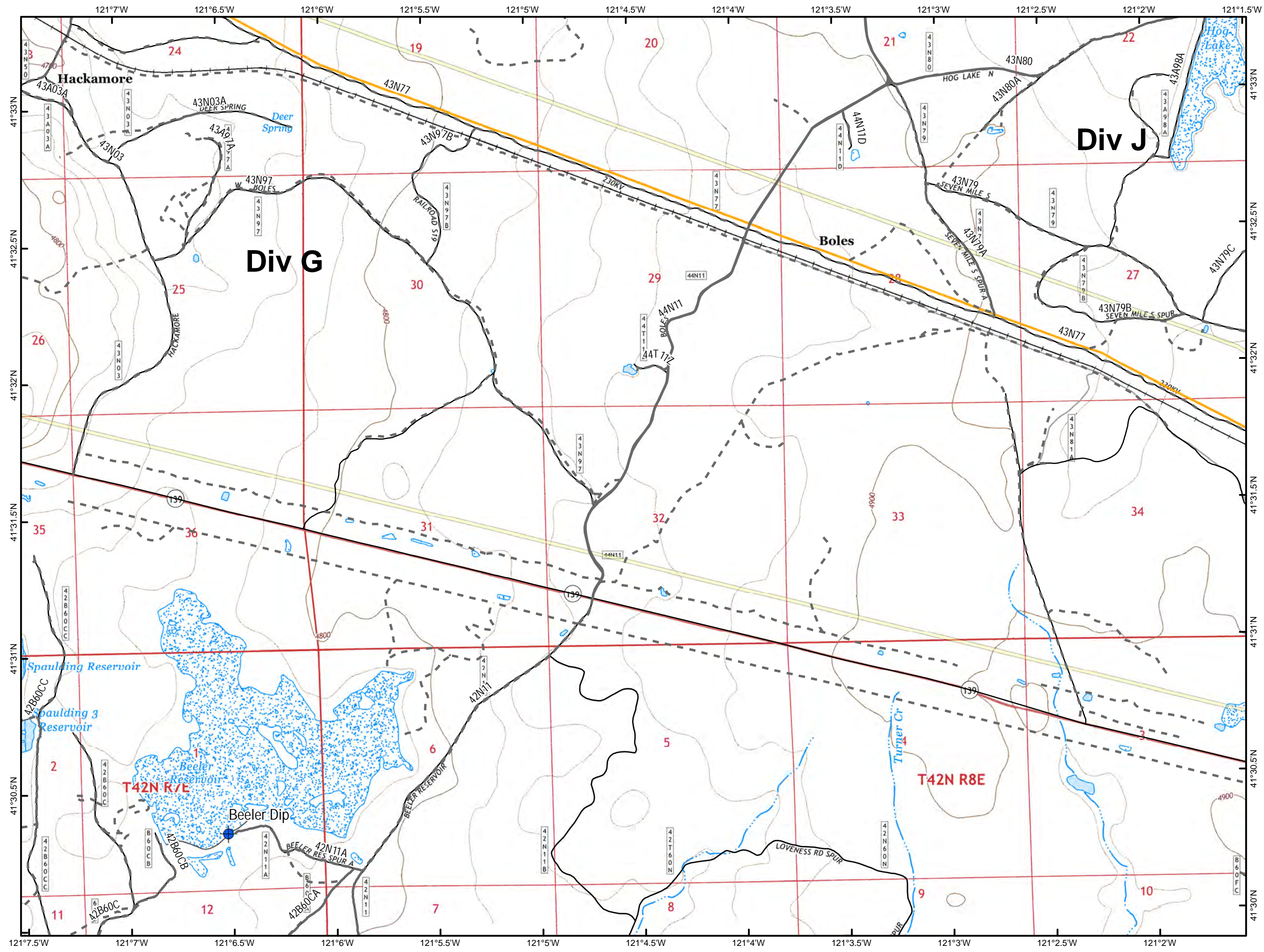
**IAP Map
Stone Fire
CA-MDF-001193
Modoc National Forest**

**8/26/2018
39,386 Acres 8/25 @ 2323**

Page 1 of 13



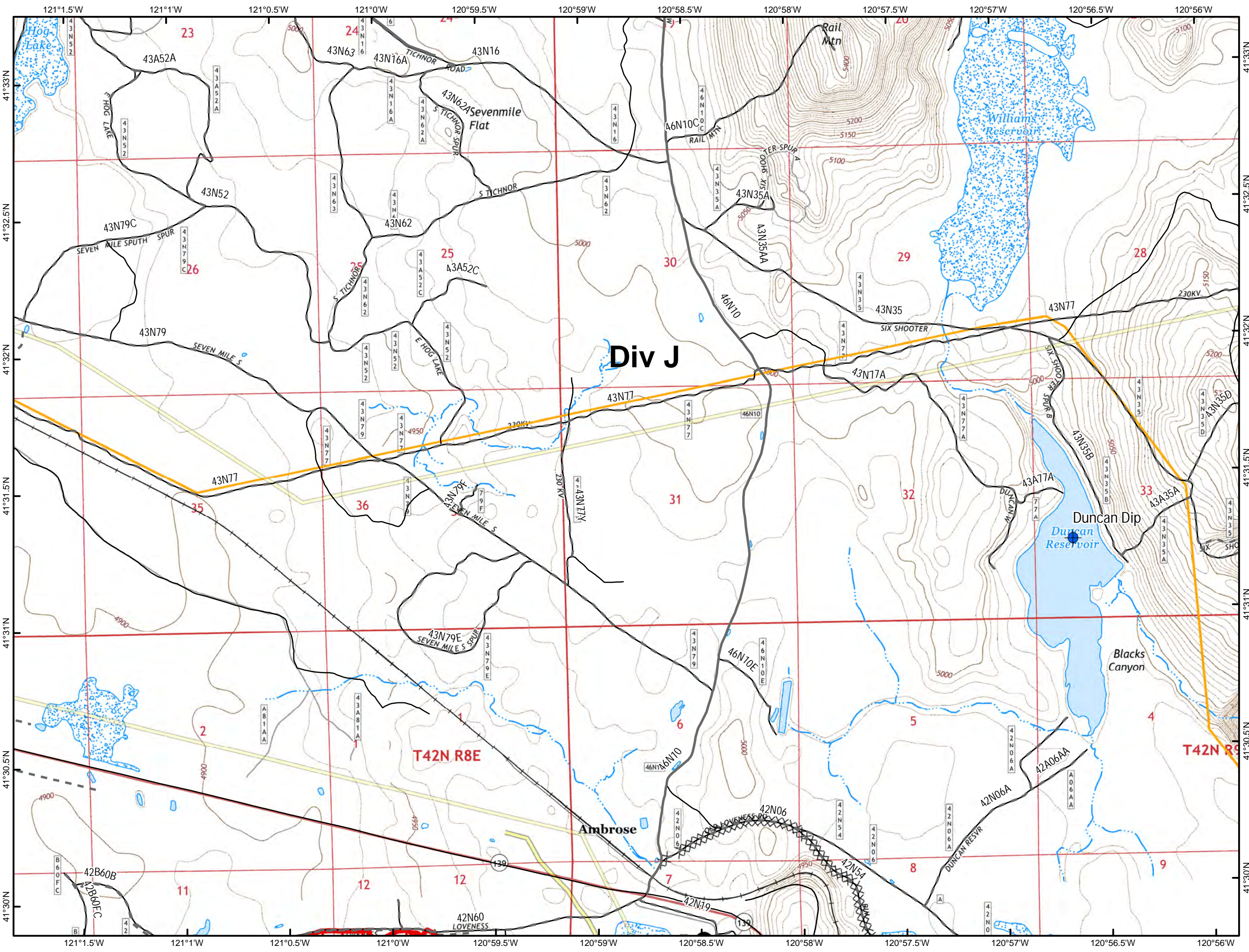
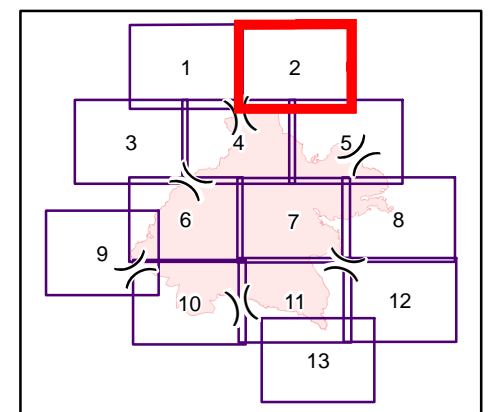
- Dip Site
- Railroad
- Gas Pipeline
- Roads & Trails**
 - Improved Road
 - Unimproved Road



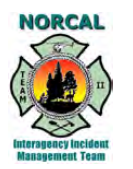
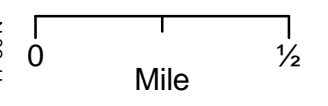
**IAP Map
Stone Fire
CA-MDF-001193
Modoc National Forest**

**8/26/2018
39,386 Acres 8/25 @ 2323**

Page 2 of 13



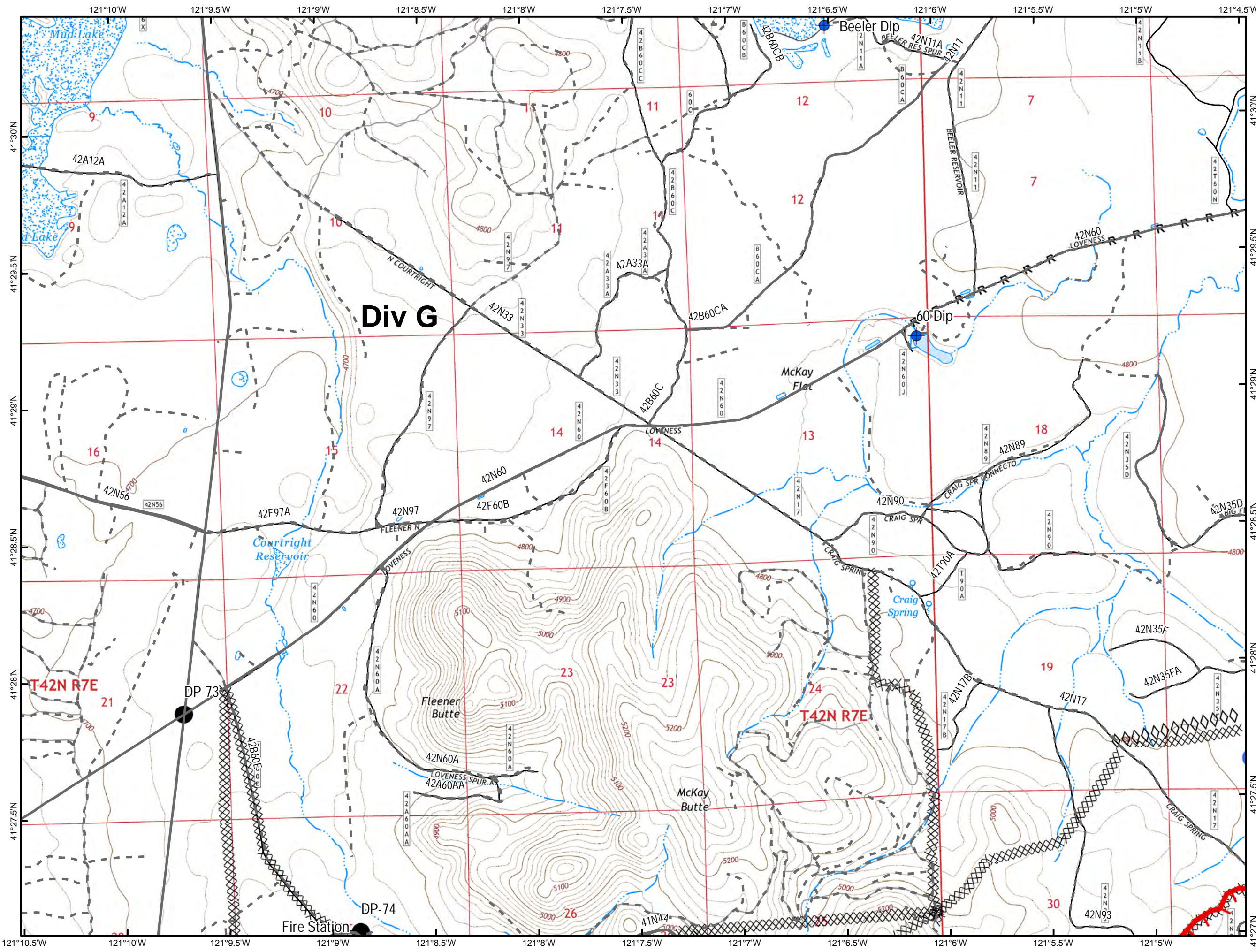
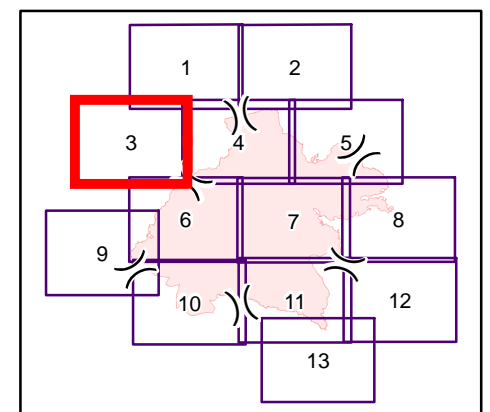
- Dip Site
- Drop Point
- Uncontrolled Fire Edge
- Completed Dozer Line
- Transmission Lines
- Railroad
- Gas Pipeline
- Roads & Trails**
- Improved Road
- Unimproved Road



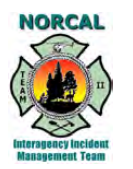
IAP Map
Stone Fire
CA-MDF-001193
Modoc National Forest

8/26/2018
39,386 Acres 8/25 @ 2323

Page 3 of 13



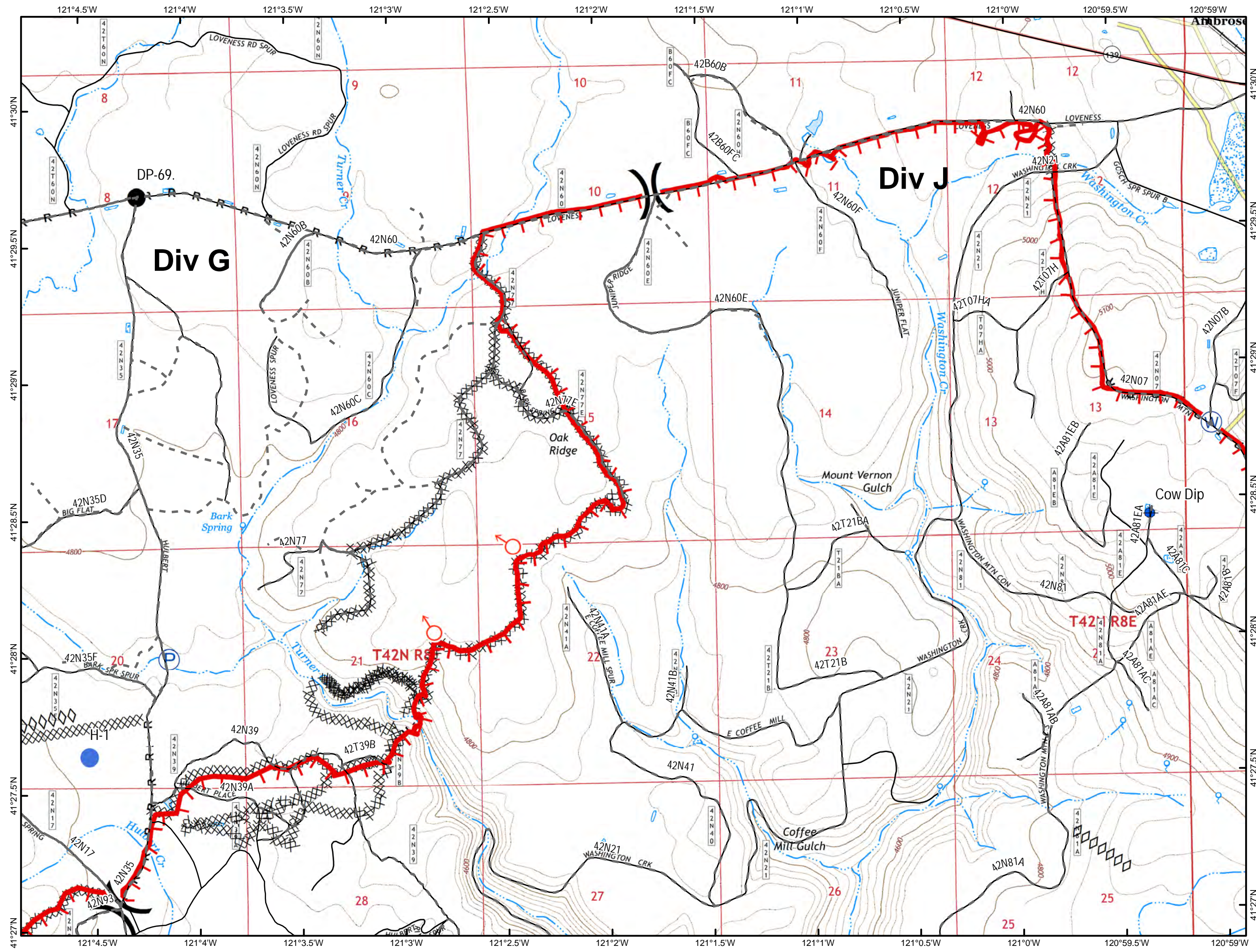
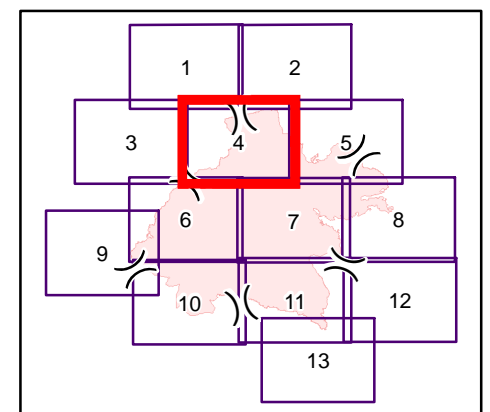
- Dip Site
- Drop Point
- Helispot
- Landmark
- Uncontrolled Fire Edge
- Completed Dozer Line
- R - R Road as Completed Line
- Aerial Retardant Drop
- Roads & Trails**
- Improved Road
- Unimproved Road



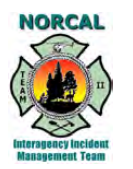
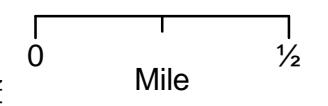
IAP Map
Stone Fire
CA-MDF-001193
Modoc National Forest

8/26/2018
39,386 Acres 8/25 @ 2323

Page 4 of 13



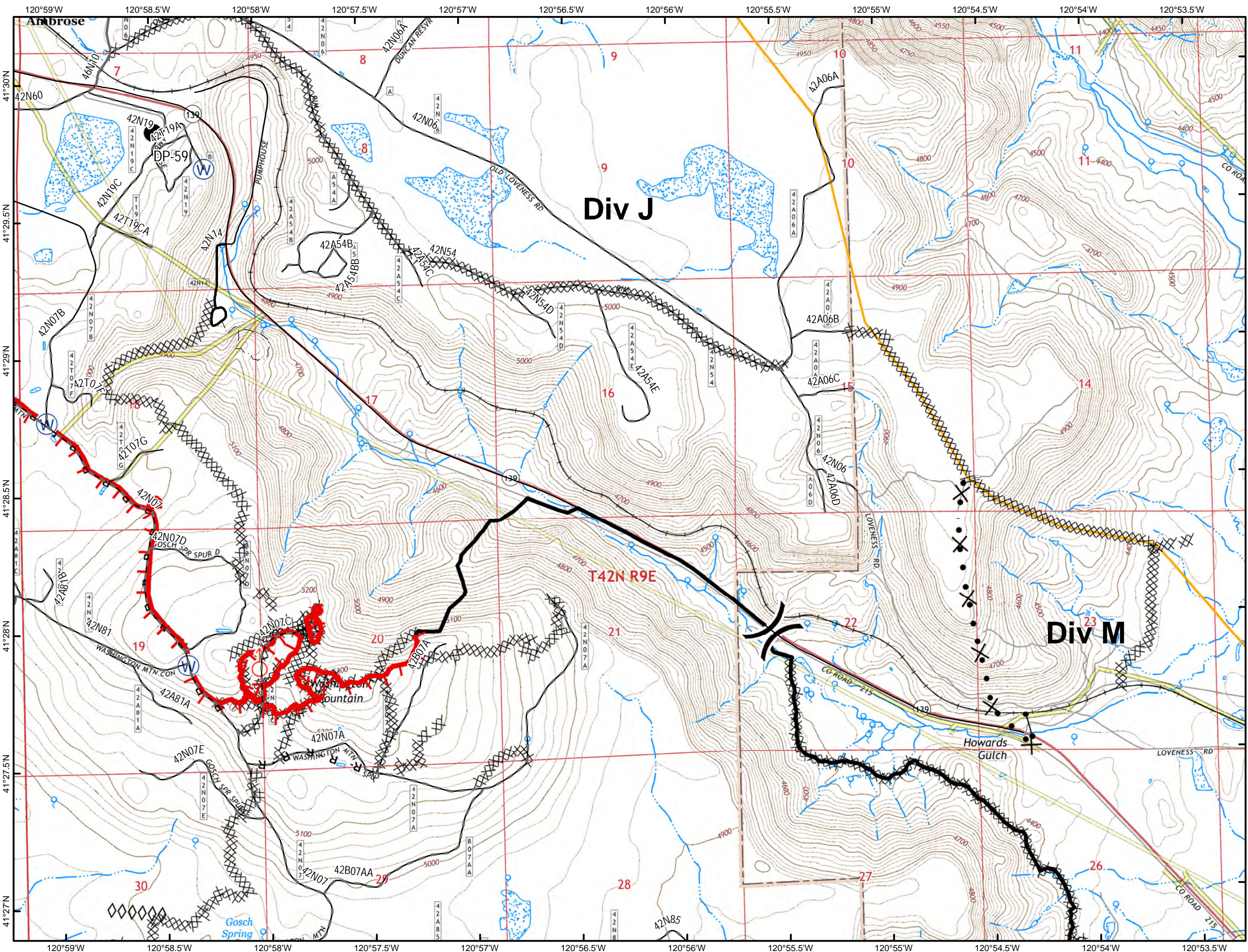
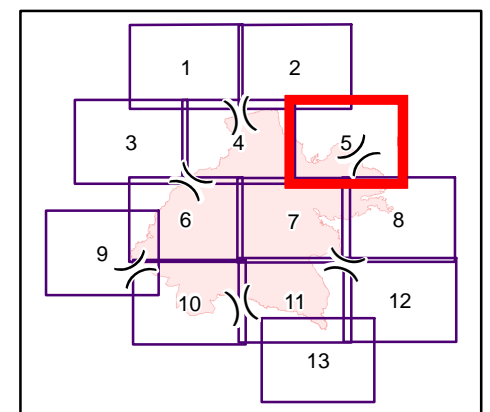
- Dip Site
- Drop Point
- Helispot
- Pump
- Spot Fire
- Water Source
- Uncontrolled Fire Edge
- Completed Dozer Line
- H Completed Hand Line
- R Road as Completed Line
- Aerial Retardant Drop
- Transmission Lines
- Railroad
- Roads & Trails**
- Unimproved Road



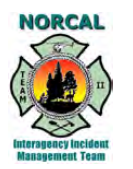
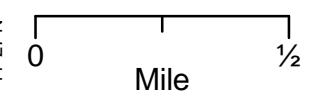
IAP Map
Stone Fire
CA-MDF-001193
Modoc National Forest

8/26/2018
39,386 Acres 8/25 @ 2323

Page 5 of 13



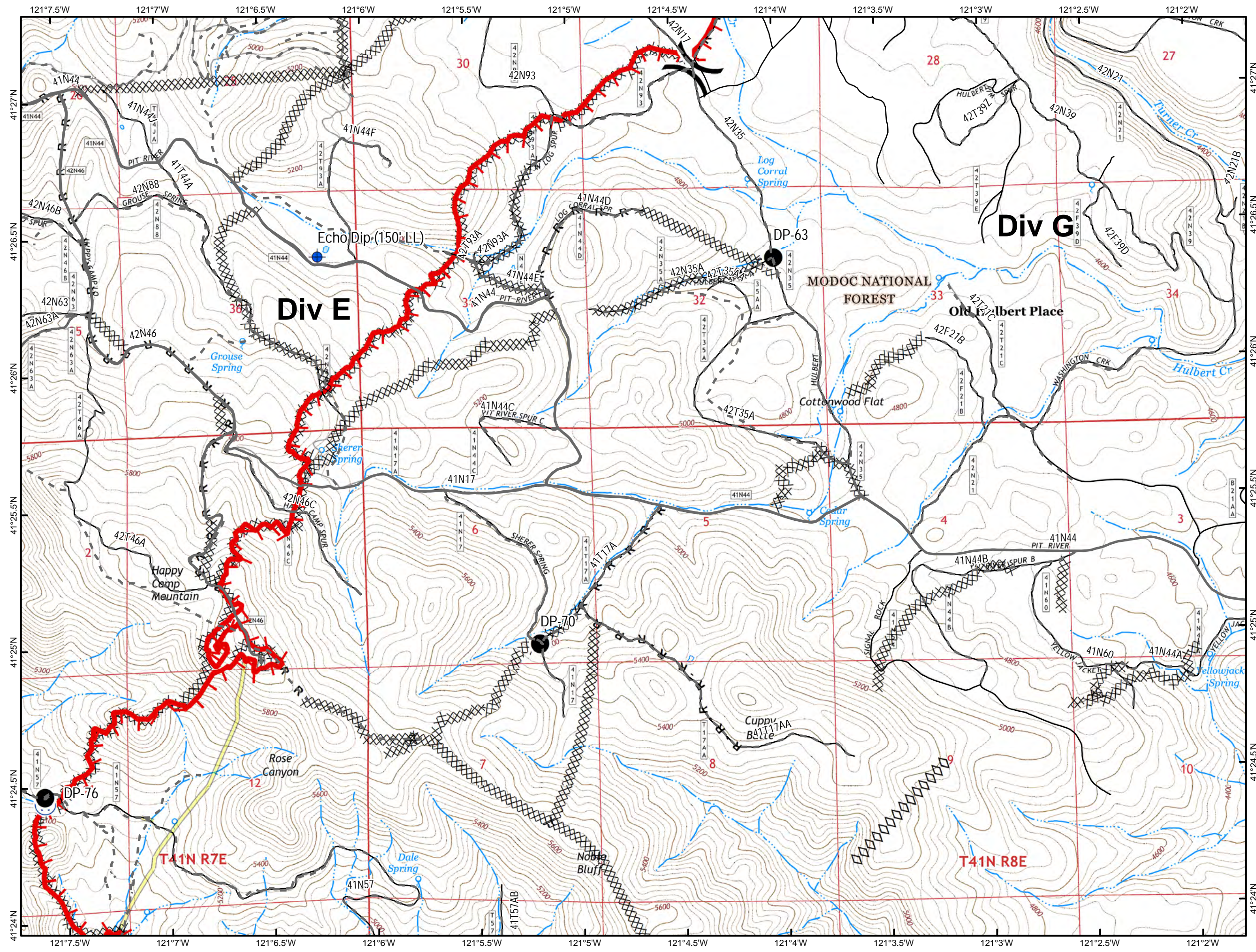
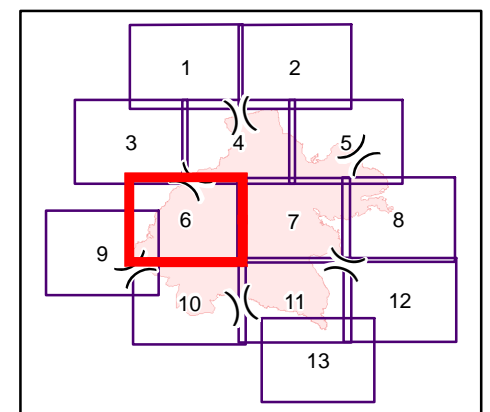
- Drop Point
- Gate
- Spot Fire
- Water Source
- Uncontrolled Fire Edge
- Completed Line
- Completed Dozer Line
- R - R Road as Completed Line
- Proposed Dozer Line
- Aerial Retardant Drop
- Transmission Lines
- Railroad
- Gas Pipeline
- Roads & Trails**
- Road
- Improved Road
- Unimproved Road
- Trails



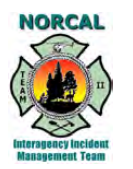
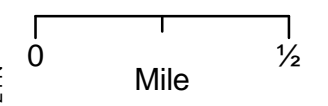
**IAP Map
Stone Fire
CA-MDF-001193
Modoc National Forest**

**8/26/2018
39,386 Acres 8/25 @ 2323**

Page 6 of 13



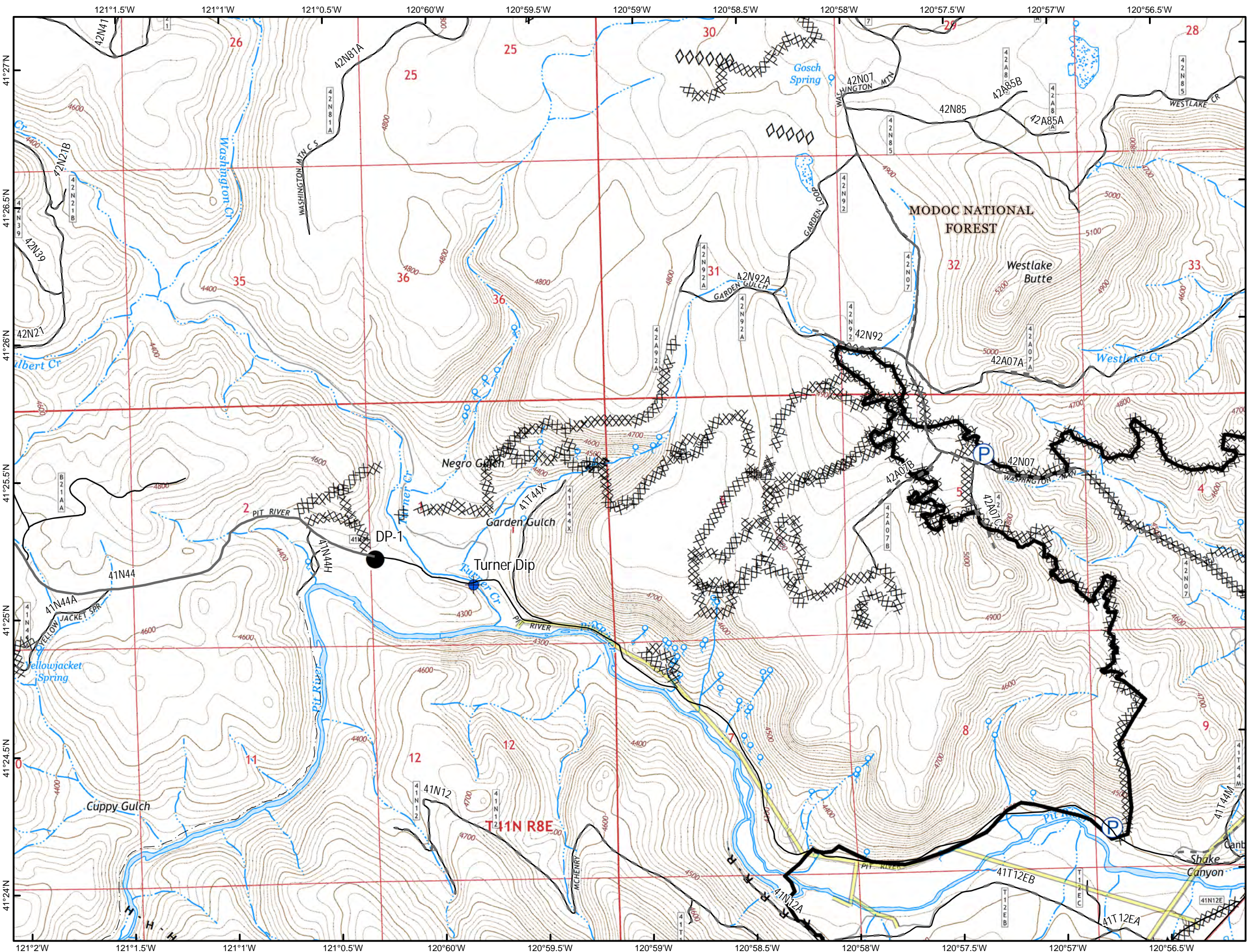
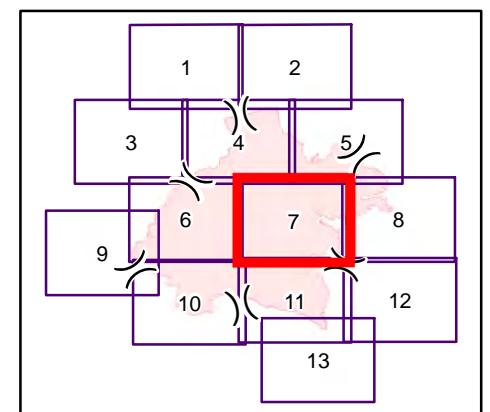
- Dip Site
- Drop Point
- Water Source
- Uncontrolled Fire Edge
- Completed Dozer Line
- R - R Road as Completed Line
- Aerial Retardant Drop
- Transmission Lines
- Lookout
- Roads & Trails**
- Improved Road
- Unimproved Road



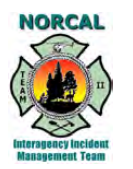
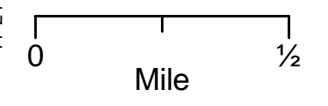
**IAP Map
Stone Fire
CA-MDF-001193
Modoc National Forest**

**8/26/2018
39,386 Acres 8/25 @ 2323**

Page 7 of 13



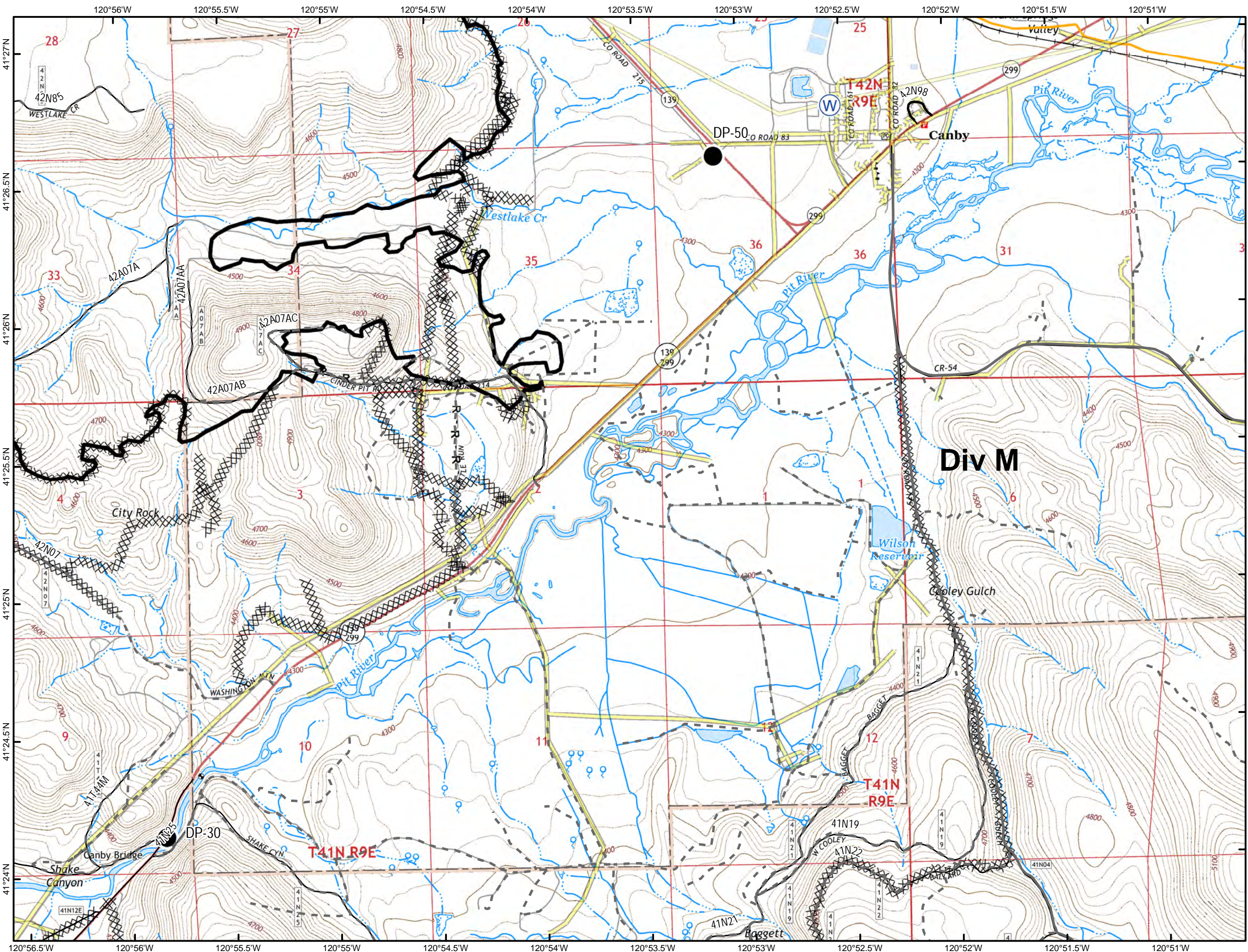
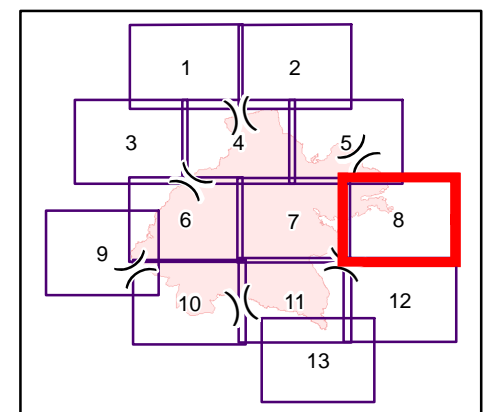
- Dip Site
- Drop Point
- Pump
- Completed Line
- Completed Dozer Line
- H Completed Hand Line
- R Road as Completed Line
- Aerial Retardant Drop
- Transmission Lines
- Roads & Trails**
- Improved Road
- Unimproved Road
- Trails



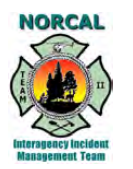
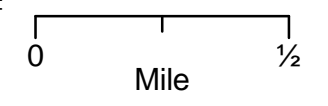
**IAP Map
Stone Fire
CA-MDF-001193
Modoc National Forest**

**8/26/2018
39,386 Acres 8/25 @ 2323**

Page 8 of 13



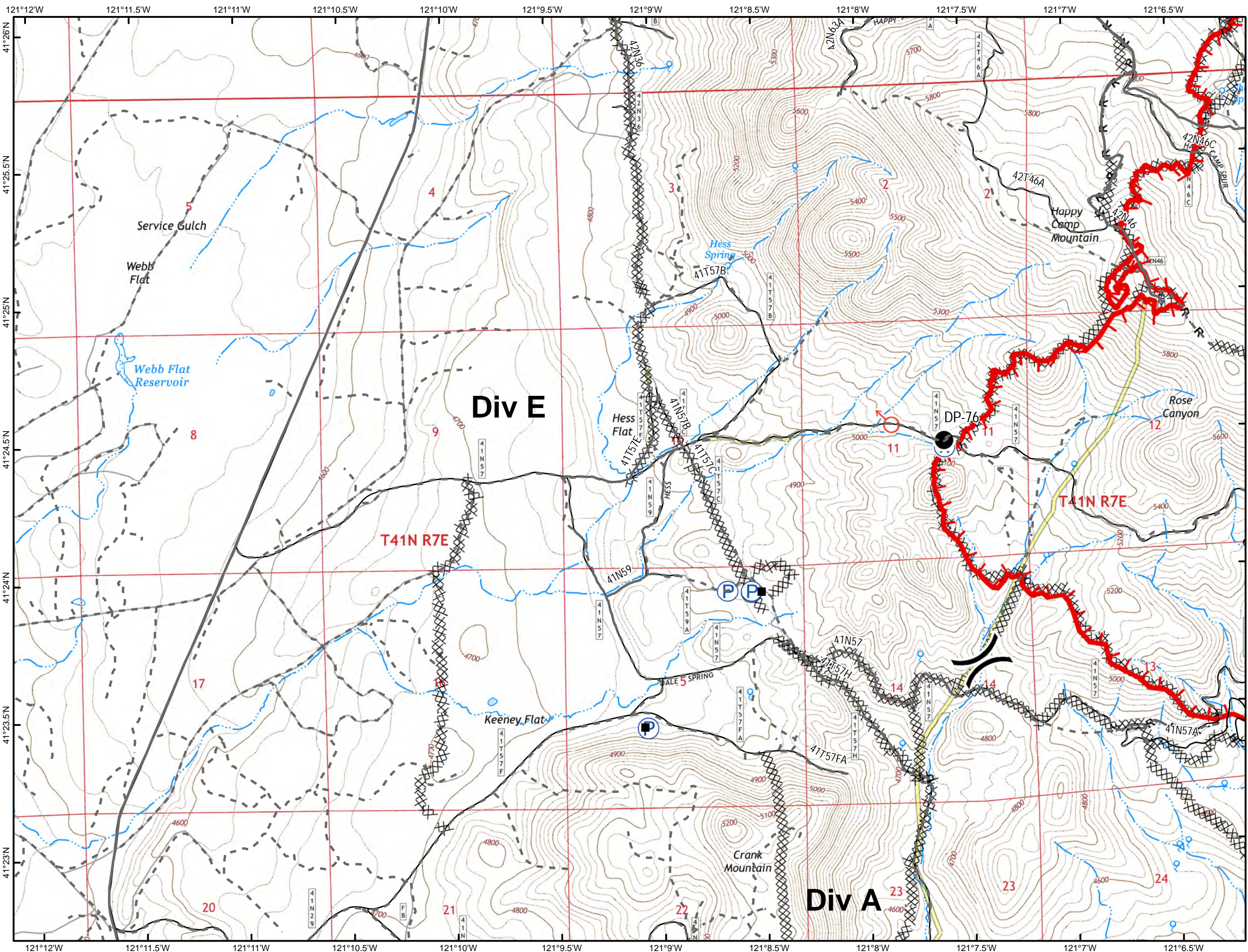
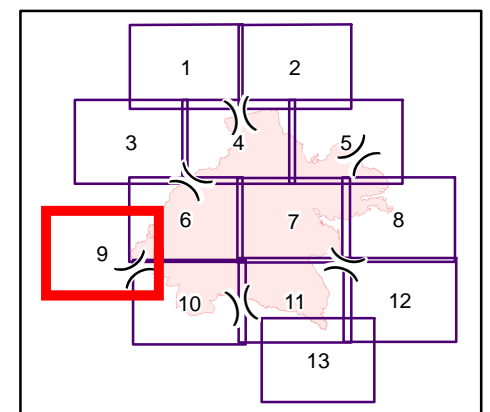
- Drop Point
- ⊙ Water Source
- Completed Line
- ⊗ Completed Dozer Line
- R - R Road as Completed Line
- Transmission Lines
- Railroad
- Gas Pipeline
- Roads & Trails**
- Road
- - - Unimproved Road



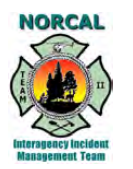
IAP Map
Stone Fire
CA-MDF-001193
Modoc National Forest

8/26/2018
39,386 Acres 8/25 @ 2323

Page 9 of 13



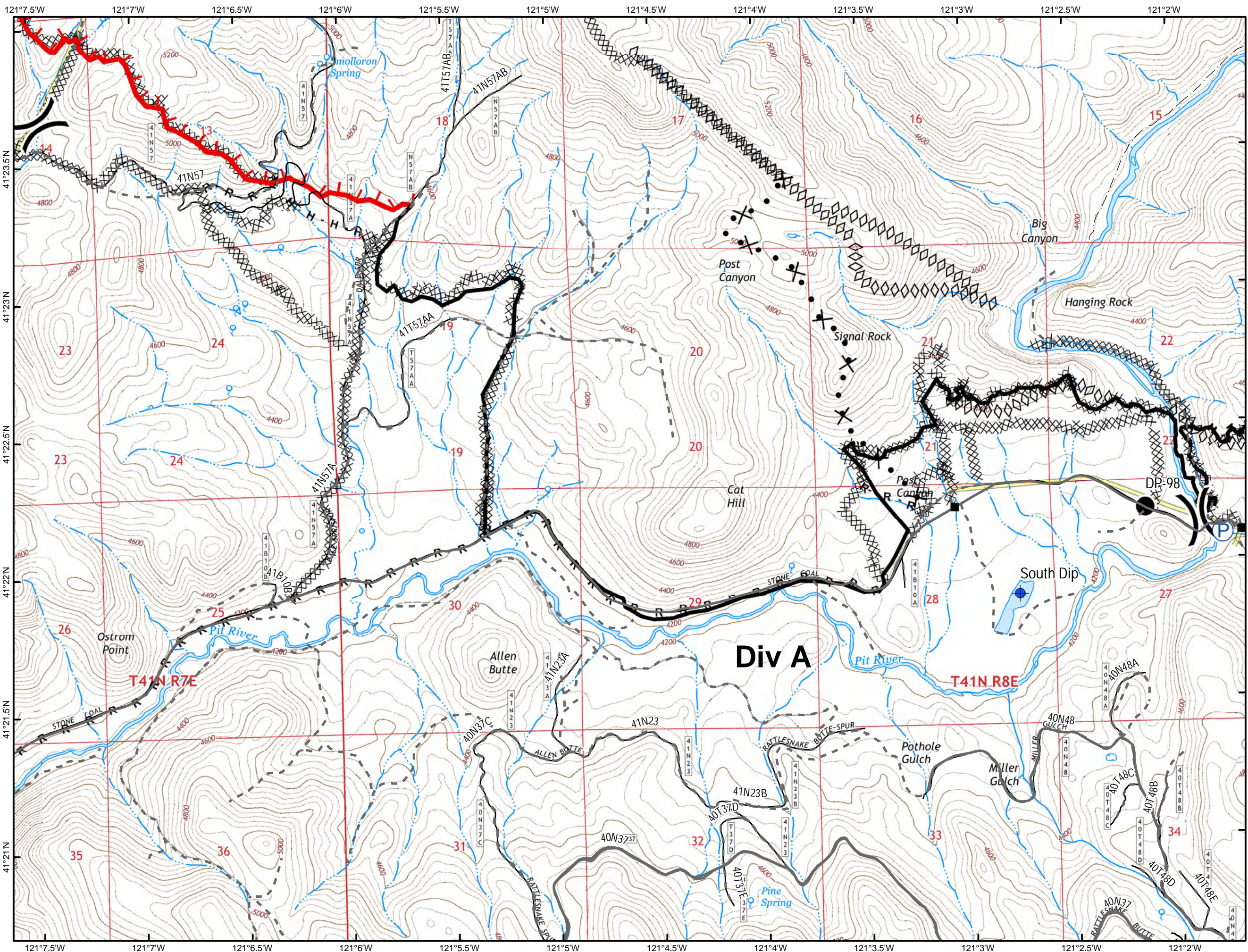
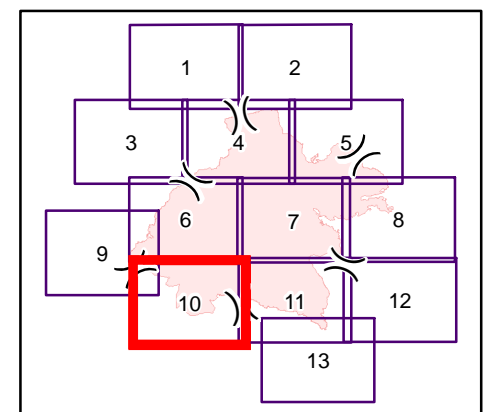
- Structures
- Drop Point
- P Pump
- ♂ Spot Fire
- W Water Source
- ▬ Uncontrolled Fire Edge
- ▨ Completed Dozer Line
- H - H Completed Hand Line
- R - R Road as Completed Line
- Transmission Lines
- 🗨 Lookout
- Roads & Trails**
- Improved Road
- - - Unimproved Road



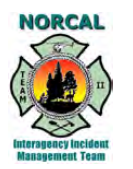
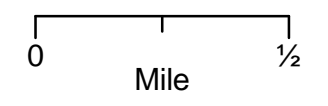
IAP Map
Stone Fire
CA-MDF-001193
Modoc National Forest

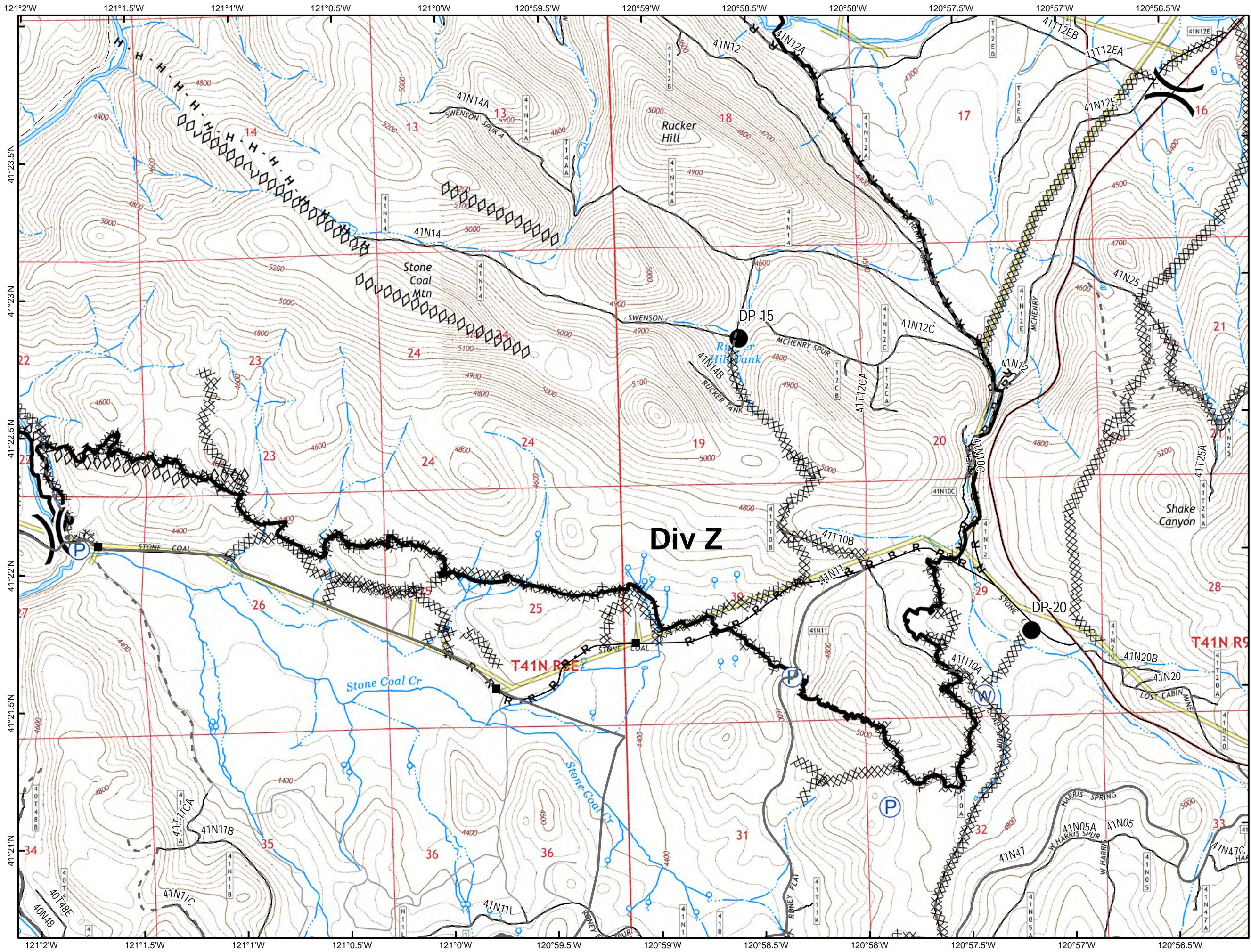
8/26/2018
39,386 Acres 8/25 @ 2323

Page 10 of 13



- Structures
- Dip Site
- Drop Point
- Ⓟ Pump
- ▬ Uncontrolled Fire Edge
- ▬ Completed Line
- ▨ Completed Dozer Line
- H · H Completed Hand Line
- R · R Road as Completed Line
- ⊗ · Proposed Dozer Line
- ◇◇◇ Aerial Retardant Drop
- ▬ Transmission Lines
- Roads & Trails**
- ▬ Improved Road
- - - Unimproved Road
- · · Trails

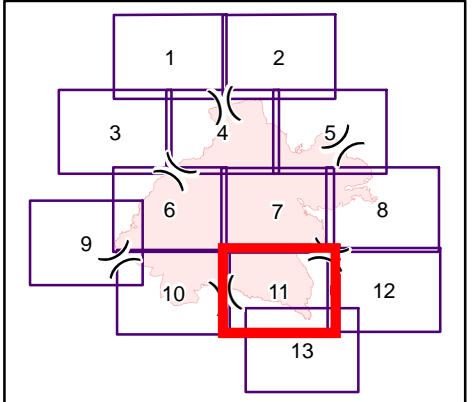




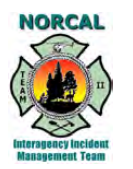
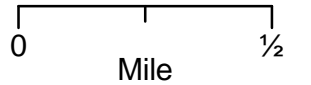
**IAP Map
Stone Fire
CA-MDF-001193
Modoc National Forest**

**8/26/2018
39,386 Acres 8/25 @ 2323**

Page 11 of 13



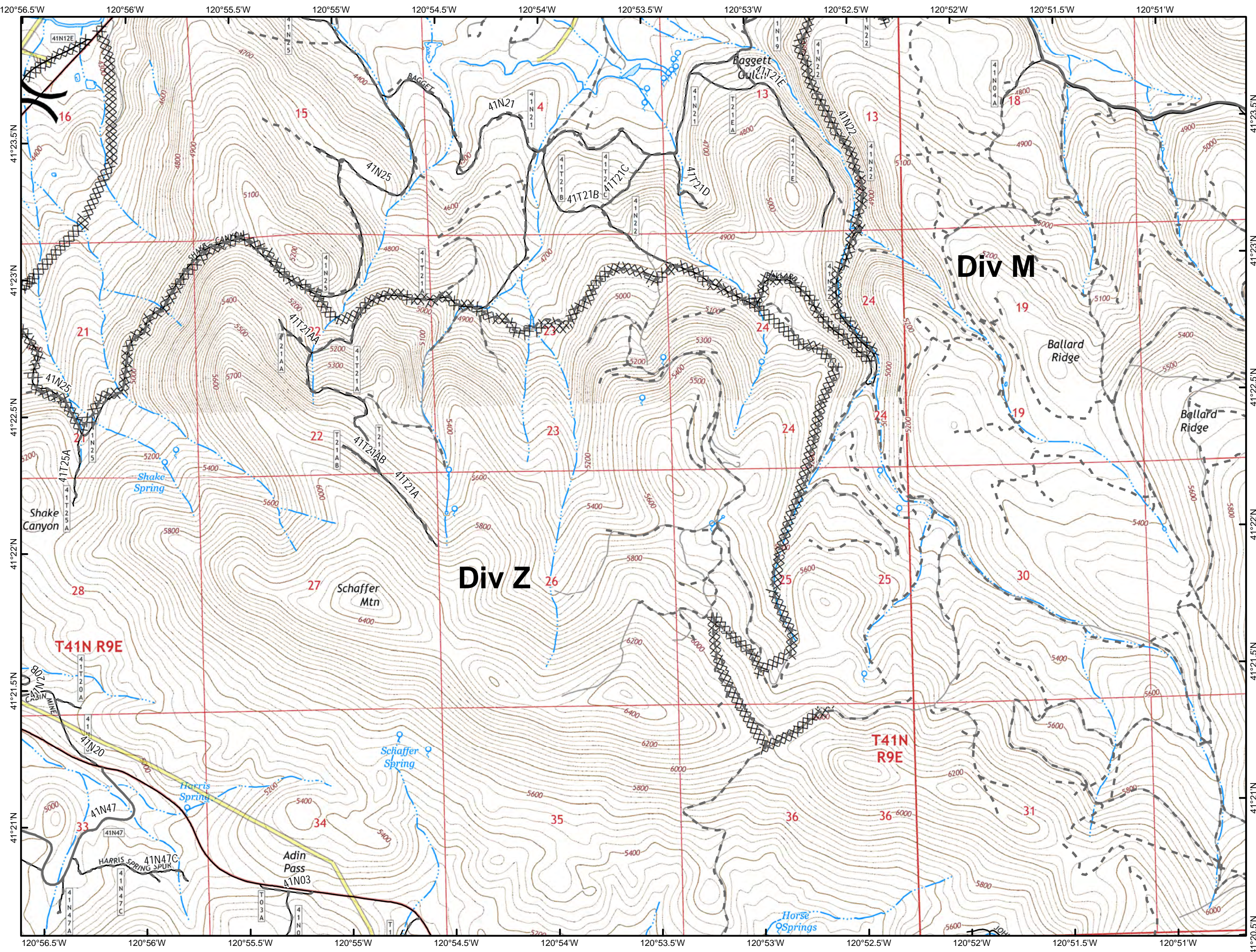
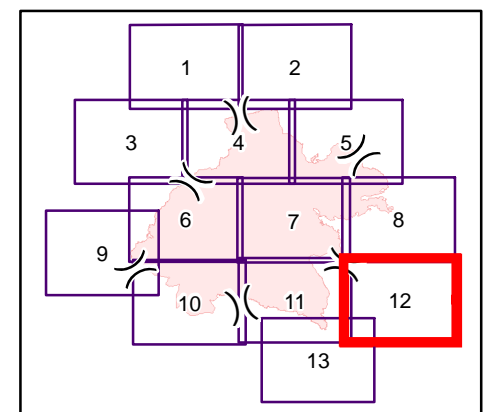
- Structures
- Drop Point
- (P) Pump
- (W) Water Source
- Completed Line
- XXXX Completed Dozer Line
- H · H Completed Hand Line
- R · R Road as Completed Line
- ◇◇◇ Aerial Retardant Drop
- Transmission Lines
- Roads & Trails**
- Improved Road
- - - Unimproved Road
- · · Trails



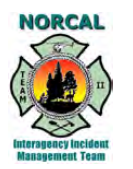
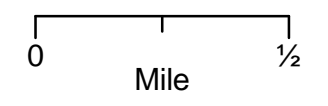
IAP Map
Stone Fire
CA-MDF-001193
Modoc National Forest

8/26/2018
39,386 Acres 8/25 @ 2323

Page 12 of 13



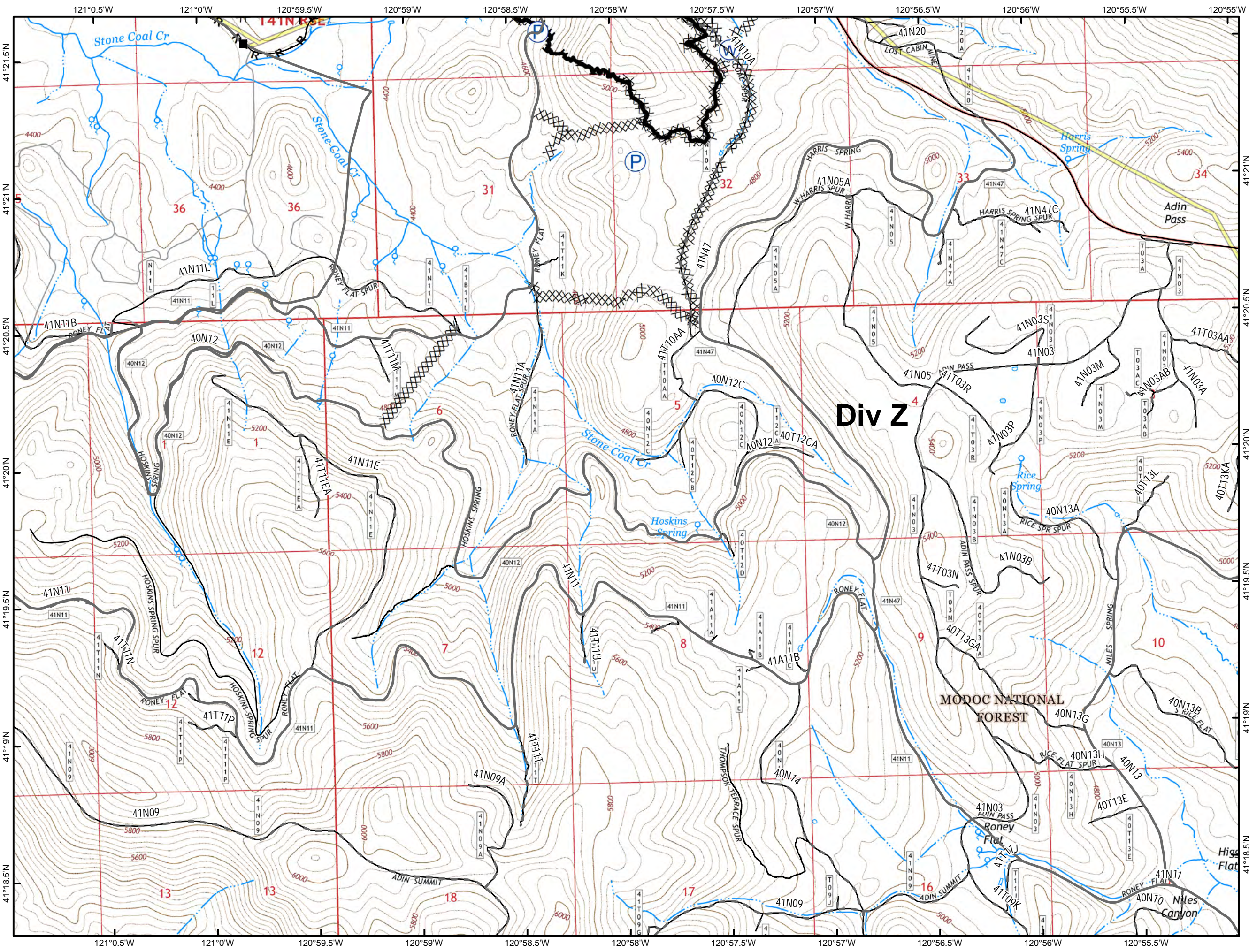
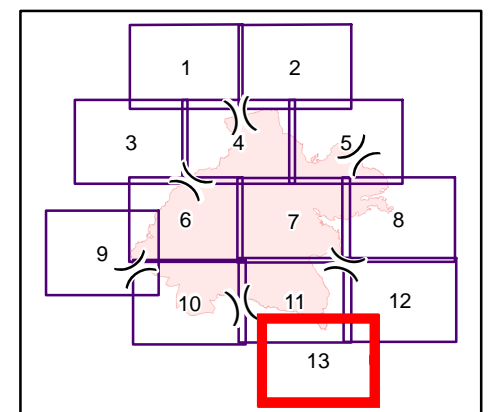
- XXXX Completed Dozer Line
- Transmission Lines
- Roads & Trails**
 - Improved Road
 - - - Unimproved Road



IAP Map
Stone Fire
CA-MDF-001193
Modoc National Forest

8/26/2018
39,386 Acres 8/25 @ 2323

Page 13 of 13



- Structures
- (P) Pump
- (W) Water Source
- Completed Line
- XXXX Completed Dozer Line
- H - H Completed Hand Line
- R - R Road as Completed Line
- Transmission Lines
- Roads & Trails**
- Improved Road
- - - Unimproved Road

