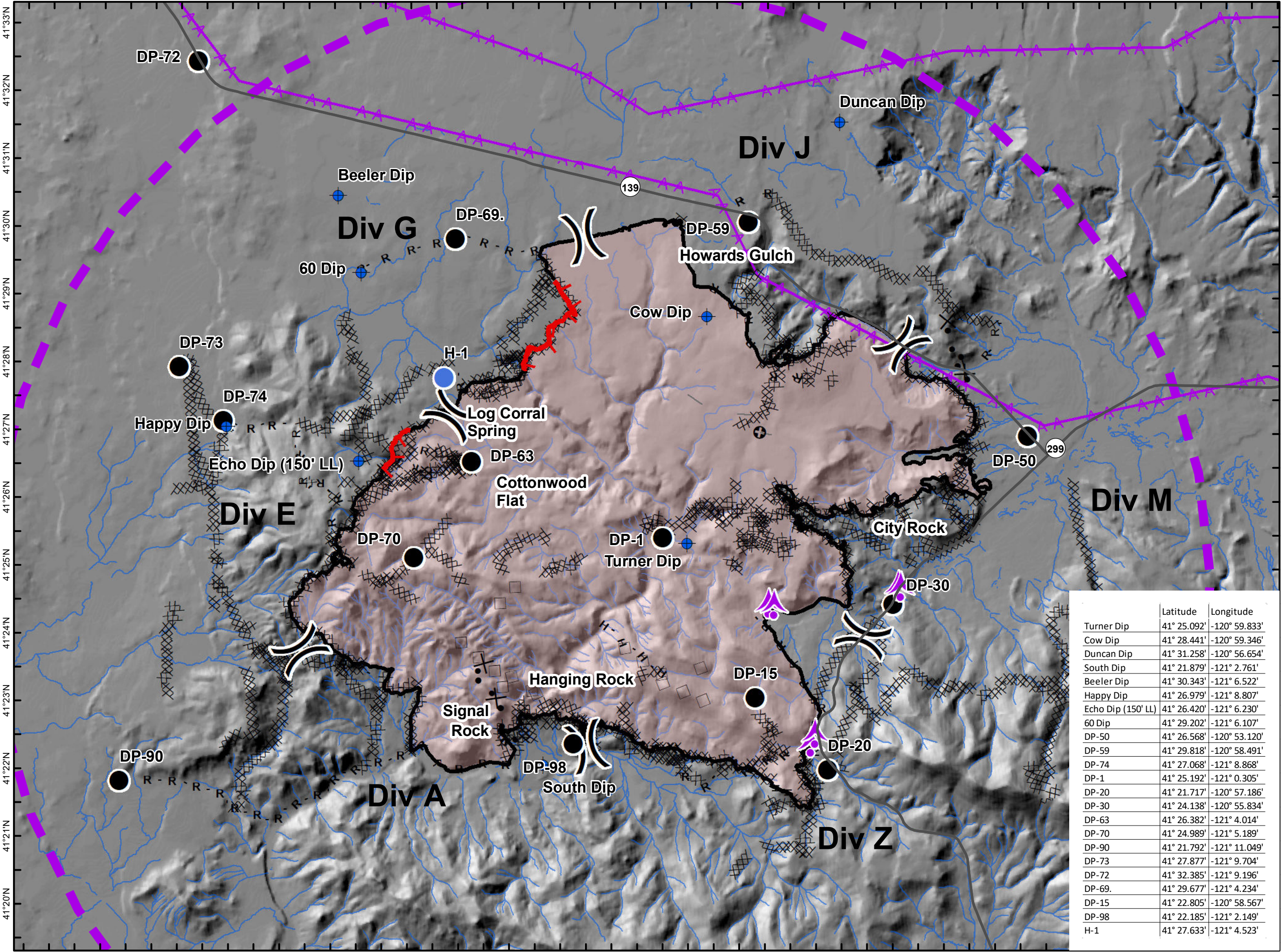


121°12'W 121°11'W 121°10'W 121°9'W 121°8'W 121°7'W 121°6'W 121°5'W 121°4'W 121°3'W 121°2'W 121°1'W 121°0'W 120°59'W 120°58'W 120°57'W 120°56'W 120°55'W 120°54'W 120°53'W 120°52'W 120°51'W 120°50'W 120°49'W 120°48'W



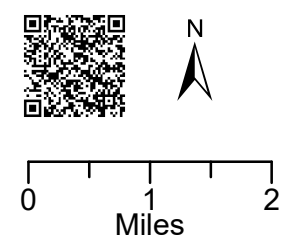
TFR Map
Stone Fire
CA-MDF-001193
Modoc National Forest

8/28/2018
Acres - 39,387 on 8/27 23:19



- Uncontrolled Fire Edge
- Completed Line
- Completed Dozer Line
- Completed Hand Line
- Road as Completed Line
- Proposed Dozer Line
- Aerial Hazard
- Aerial Retardant Drop
- Other
- Dip Site
- Drop Point
- Gate
- Helispot
- Division Break

	Latitude	Longitude
Turner Dip	41° 25.092'	-120° 59.833'
Cow Dip	41° 28.441'	-120° 59.346'
Duncan Dip	41° 31.258'	-120° 56.654'
South Dip	41° 21.879'	-121° 2.761'
Beeler Dip	41° 30.343'	-121° 6.522'
Happy Dip	41° 26.979'	-121° 8.807'
Echo Dip (150' LL)	41° 26.420'	-121° 6.230'
60 Dip	41° 29.202'	-121° 6.107'
DP-50	41° 26.568'	-120° 53.120'
DP-59	41° 29.818'	-120° 58.491'
DP-74	41° 27.068'	-121° 8.868'
DP-1	41° 25.192'	-121° 0.305'
DP-20	41° 21.717'	-120° 57.186'
DP-30	41° 24.138'	-120° 55.834'
DP-63	41° 26.382'	-121° 4.014'
DP-70	41° 24.989'	-121° 5.189'
DP-90	41° 21.792'	-121° 11.049'
DP-72	41° 32.385'	-121° 9.196'
DP-69	41° 29.677'	-121° 4.234'
DP-15	41° 22.805'	-120° 58.567'
DP-98	41° 22.185'	-121° 2.149'
H-1	41° 27.633'	-121° 4.523'



121°12.5'W 121°11.5'W 121°10.5'W 121°9.5'W 121°8.5'W 121°7.5'W 121°6.5'W 121°5.5'W 121°4.5'W 121°3.5'W 121°2.5'W 121°1.5'W 121°0.5'W 120°59.5'W 120°58.5'W 120°57.5'W 120°56.5'W 120°55.5'W 120°54.5'W 120°53.5'W 120°52.5'W 120°51.5'W 120°50.5'W 120°49.5'W 120°48.5'W