



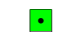








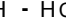


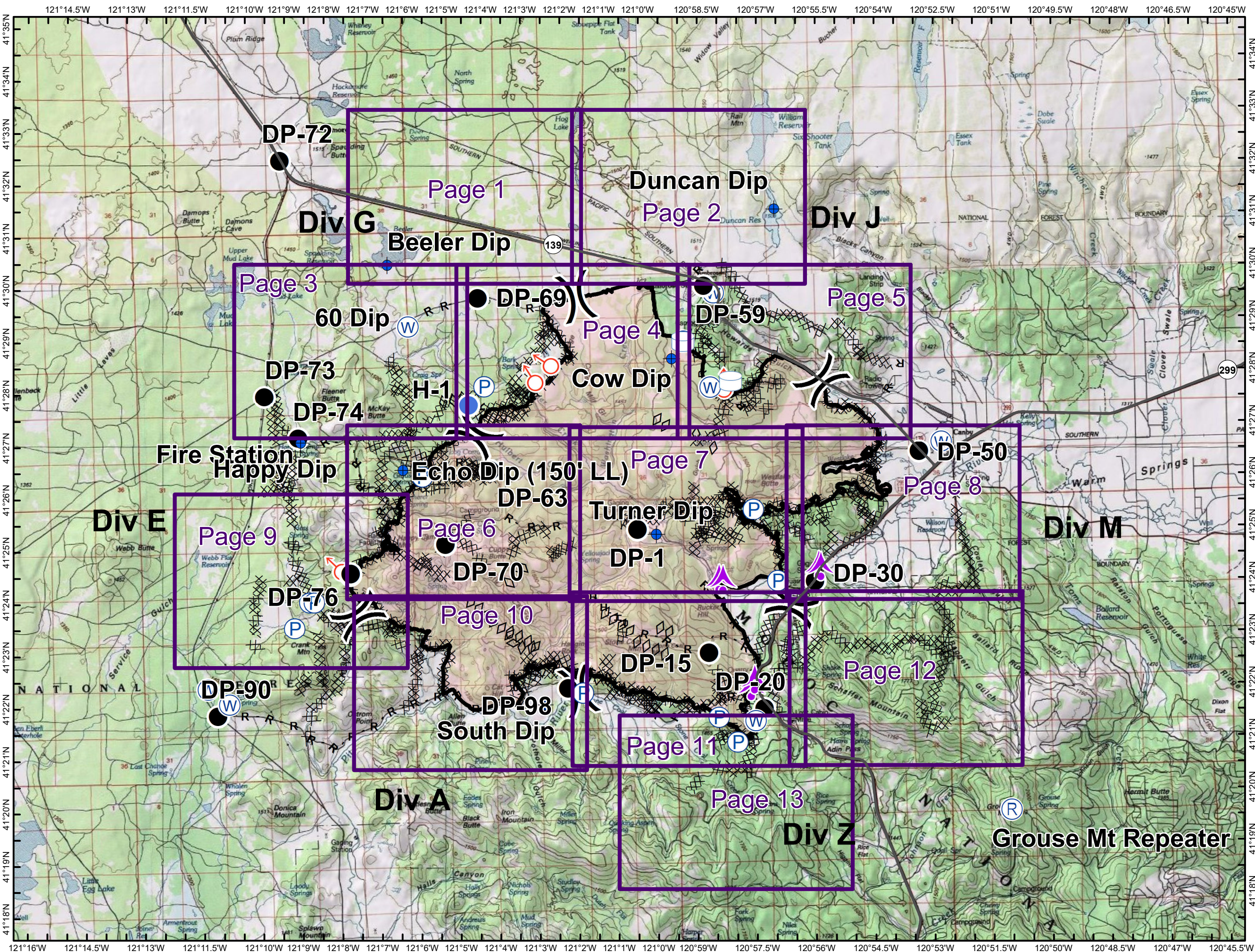
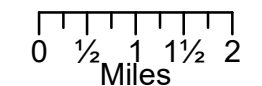


**IAP Map**  
**Stone Fire**  
**CA-MDF-001193**  
**Modoc National Forest**

**8/29/2018**  
**39,387 Acres 8/28 @ 2234**

-  Aerial Hazard
-  Dip Site
-  Drop Point
-  Helispot
-  Landmark
-  Pump
-  Repeater
-  Spot Fire
-  Water Source
-  Water Tank
-  Division Break
-  Completed Line
-  Completed Dozer Line
-  H - H Completed Hand Line
-  R - R Road as Completed Line
-  Aerial Retardant Drop

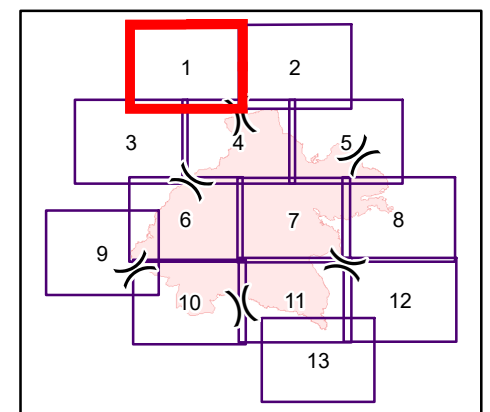


**Grouse Mt Repeater**

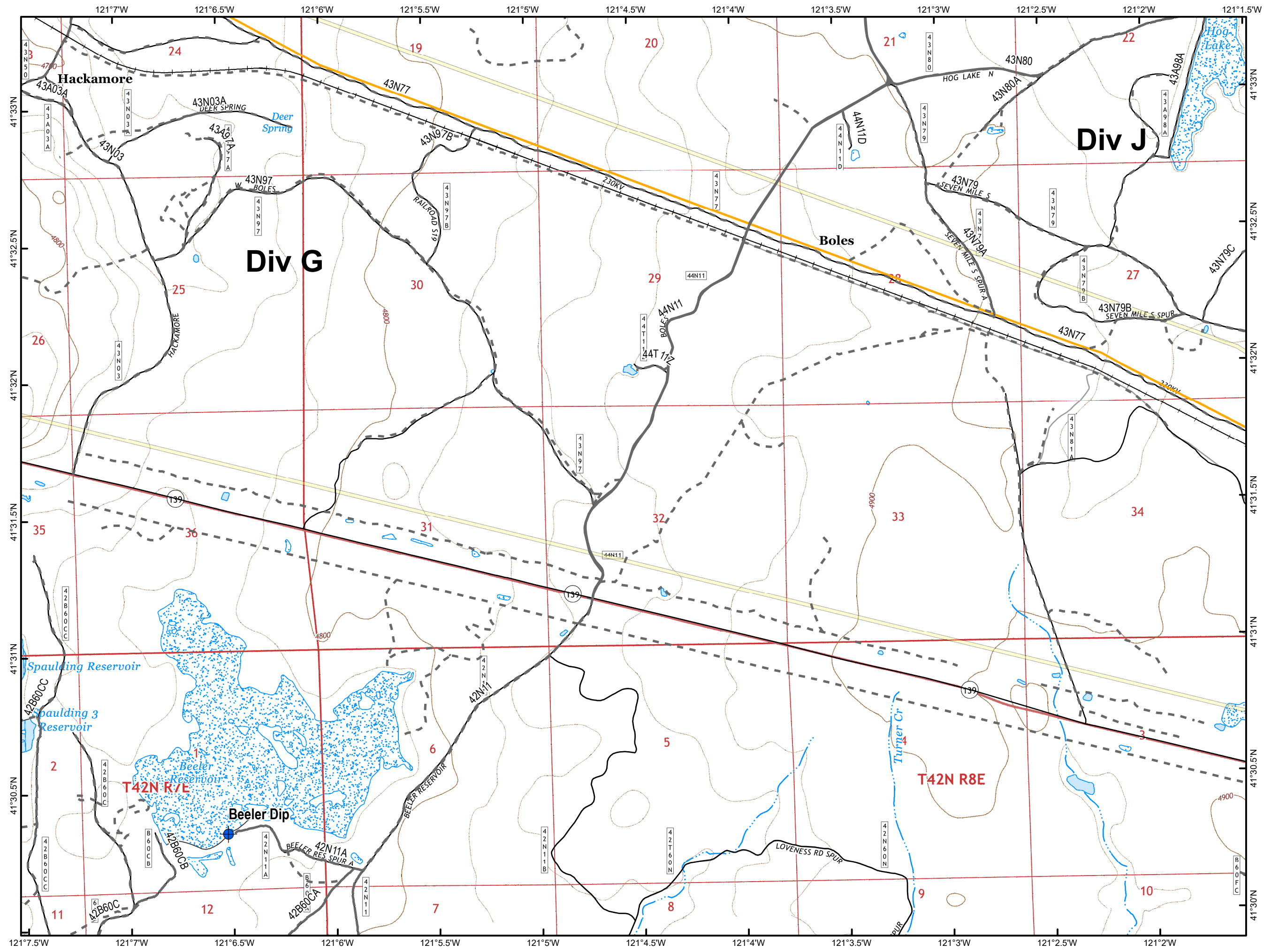
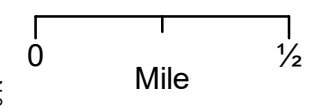
**IAP Map  
Stone Fire  
CA-MDF-001193  
Modoc National Forest**

**8/29/2018  
39,387 Acres 8/28 @ 2234**

**Page 1 of 13**



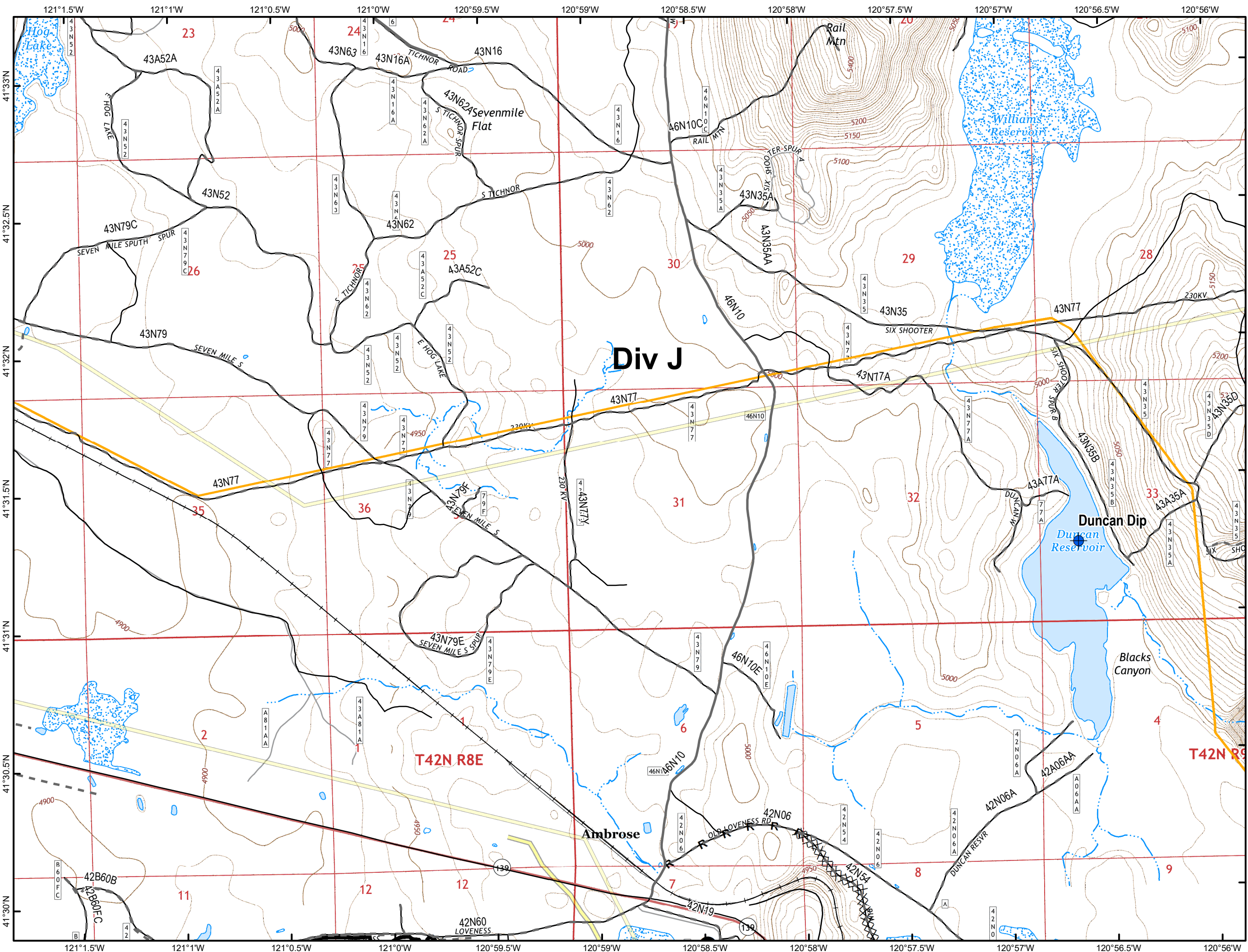
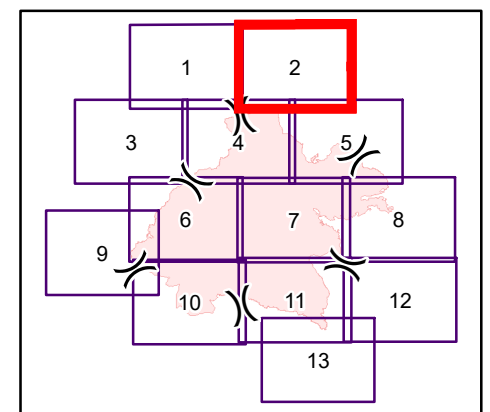
- Dip Site
- Railroad
- Gas Pipeline
- Roads & Trails**
  - Improved Road
  - Unimproved Road



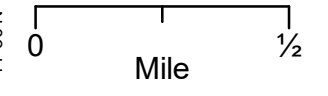
**IAP Map  
Stone Fire  
CA-MDF-001193  
Modoc National Forest**

**8/29/2018  
39,387 Acres 8/28 @ 2234**

**Page 2 of 13**



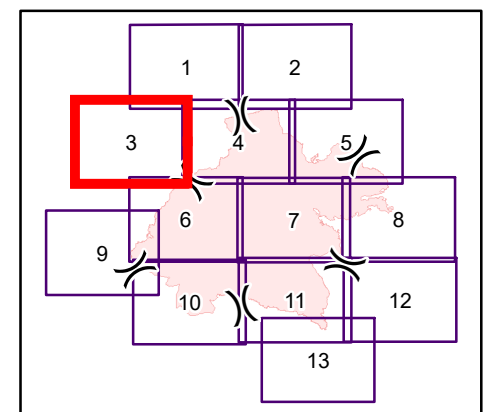
- Dip Site
- Drop Point
- Completed Line
- Completed Dozer Line
- R** - R Road as Completed Line
- Transmission Lines
- Railroad
- Gas Pipeline
- Roads & Trails**
- Improved Road
- Unimproved Road



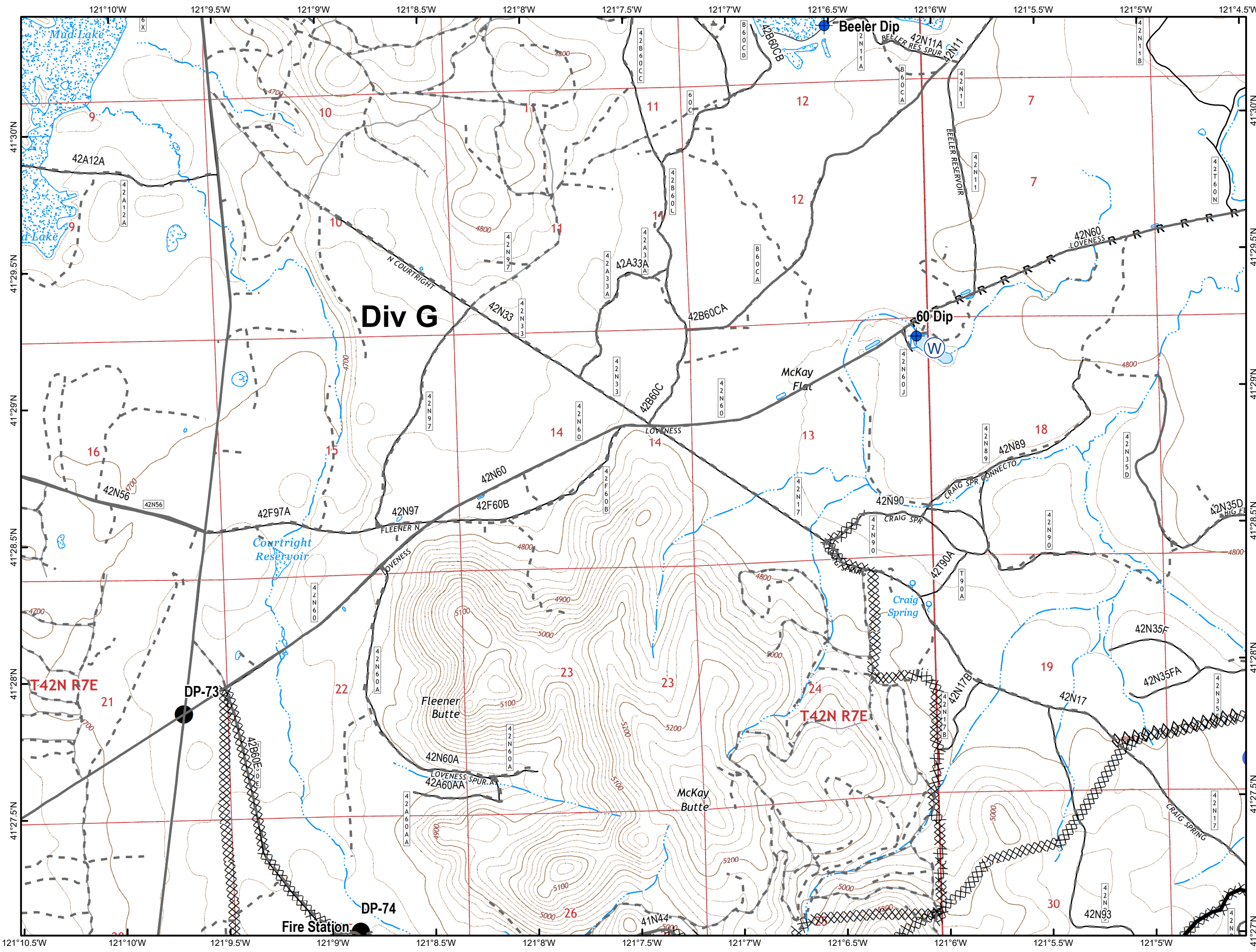
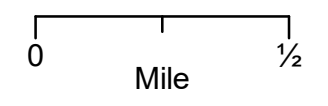
**IAP Map  
Stone Fire  
CA-MDF-001193  
Modoc National Forest**

**8/29/2018  
39,387 Acres 8/28 @ 2234**

**Page 3 of 13**



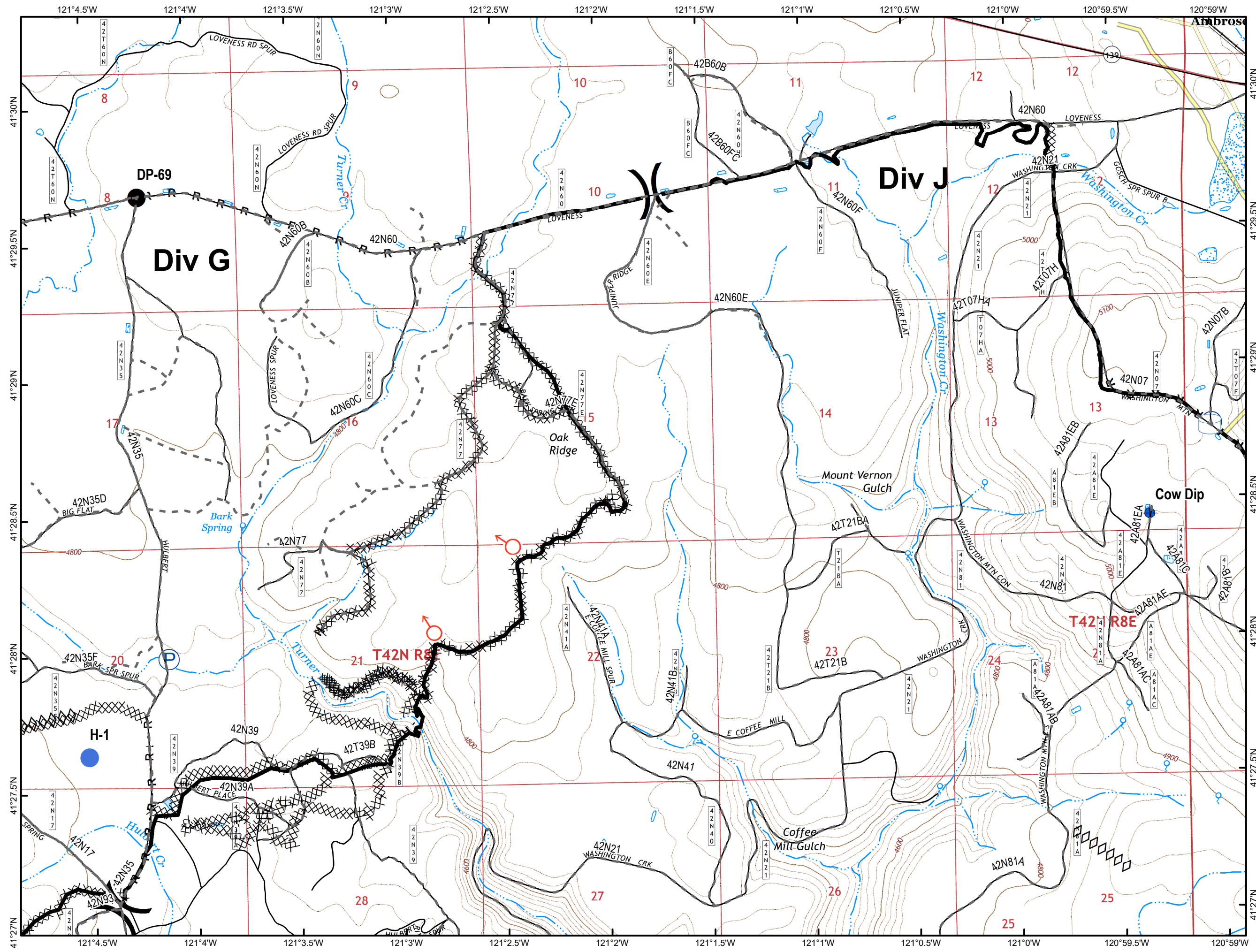
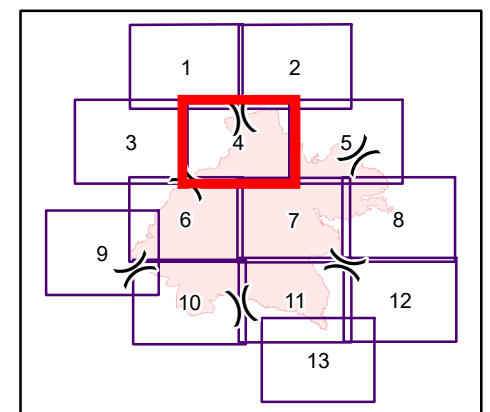
- Dip Site
- Drop Point
- Helispot
- Landmark
- Water Source
- Completed Line
- Completed Dozer Line
- R - R Road as Completed Line
- Aerial Retardant Drop
- Roads & Trails**
- Improved Road
- Unimproved Road



**IAP Map**  
**Stone Fire**  
**CA-MDF-001193**  
**Modoc National Forest**

**8/29/2018**  
**39,387 Acres 8/28 @ 2234**

**Page 4 of 13**



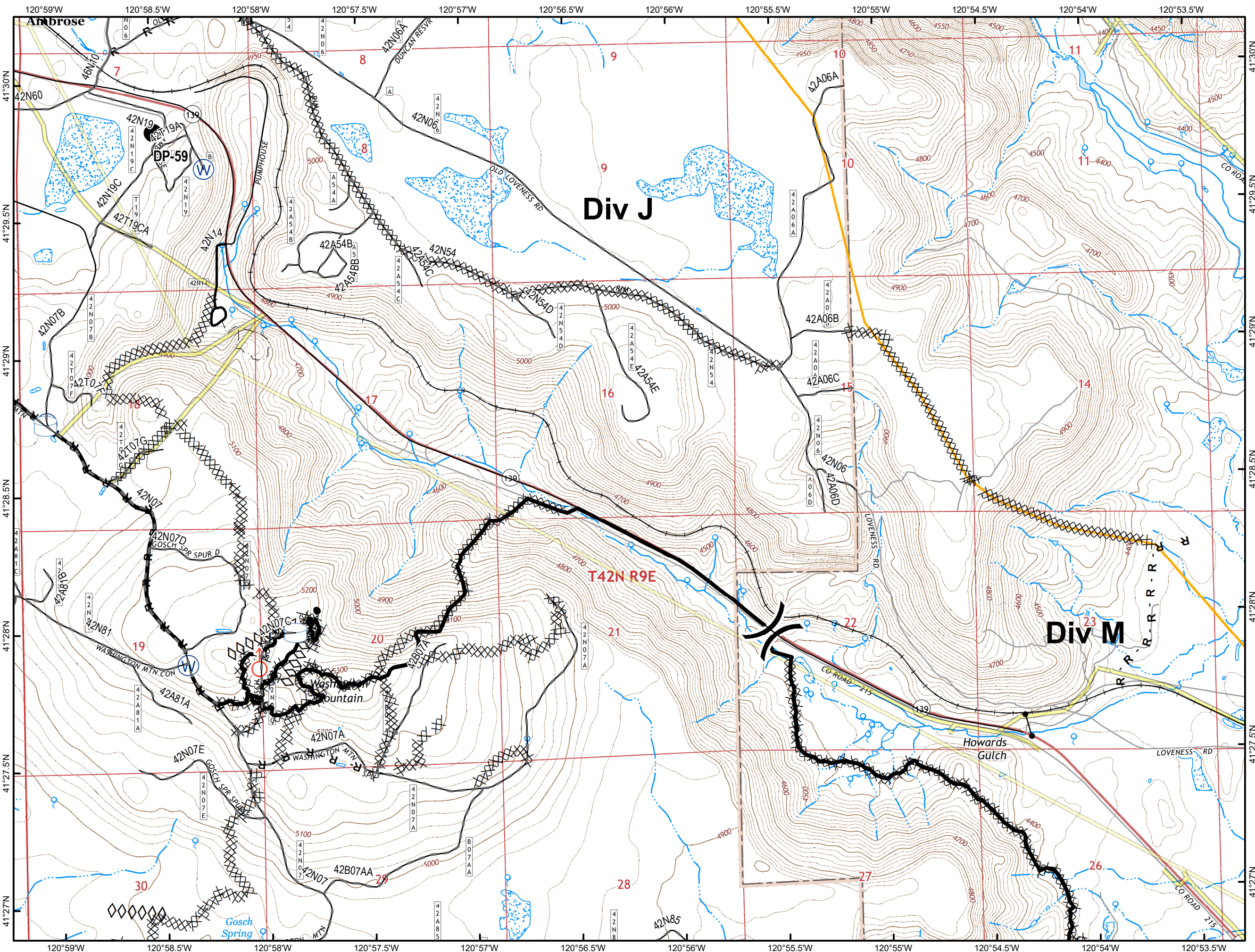
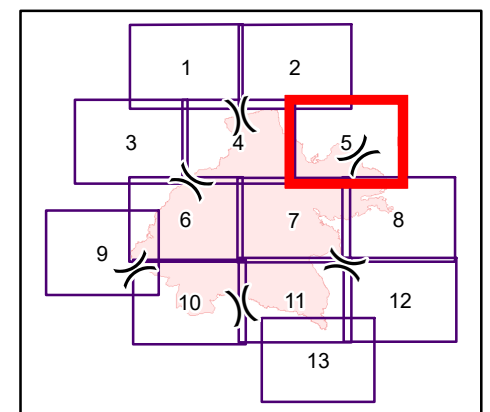
- Dip Site
- Drop Point
- Helispot
- Pump
- Spot Fire
- Water Source
- Water Tank
- Completed Line
- Completed Dozer Line
- H - H Completed Hand Line
- R - R Road as Completed Line
- Aerial Retardant Drop
- Transmission Lines
- Railroad
- Roads & Trails**
- Unimproved Road



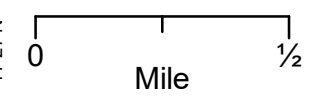
**IAP Map**  
**Stone Fire**  
**CA-MDF-001193**  
**Modoc National Forest**

**8/29/2018**  
**39,387 Acres 8/28 @ 2234**

**Page 5 of 13**



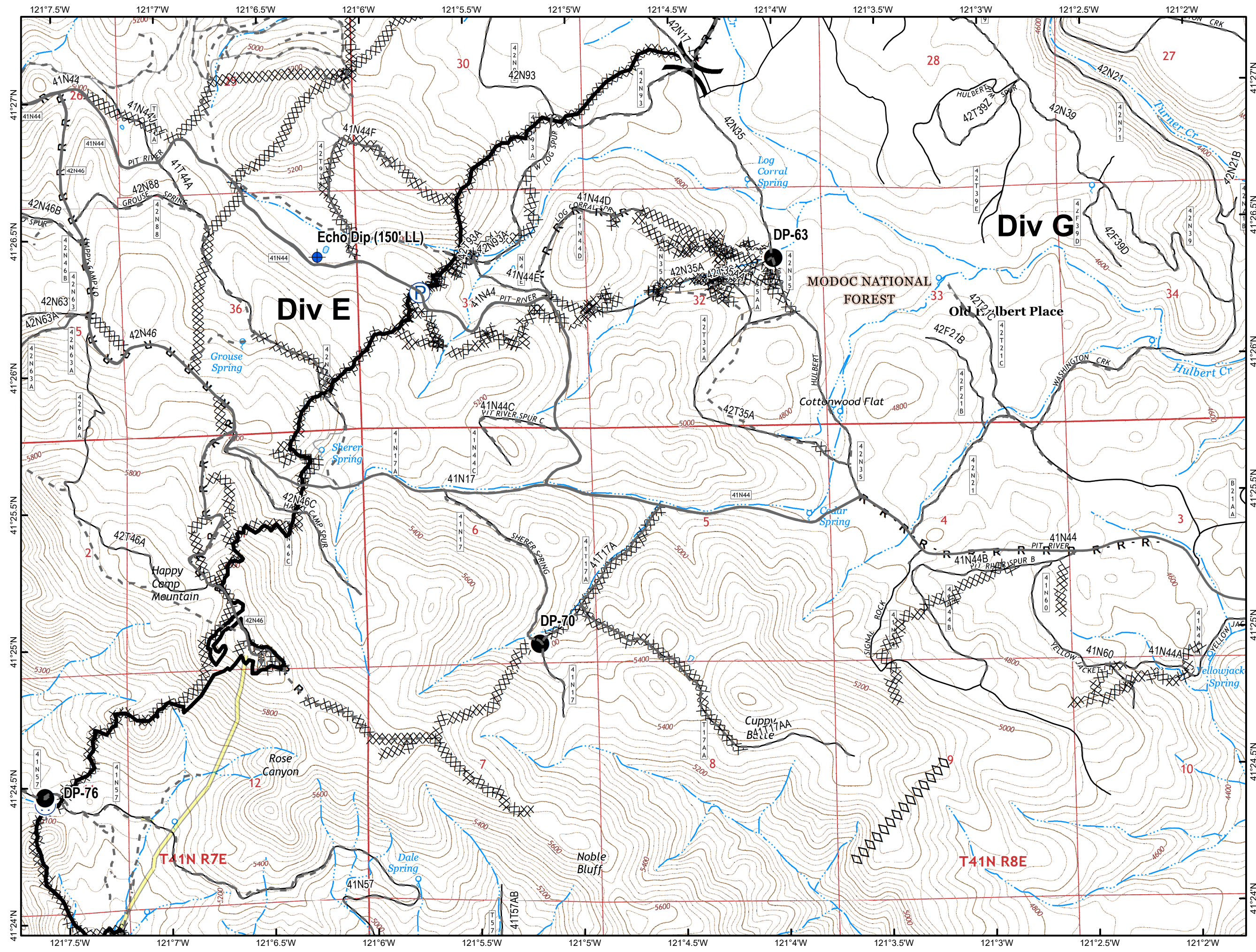
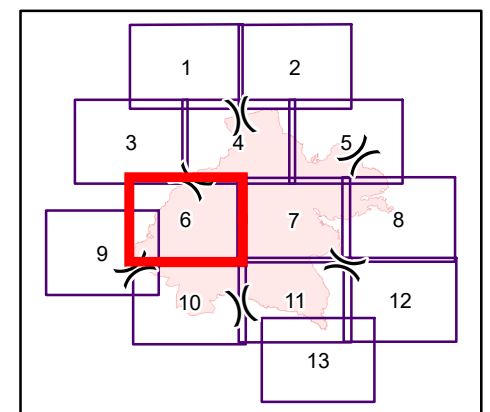
- Drop Point
- Gate
- Spot Fire
- Water Source
- Water Tank
- Completed Line
- Completed Dozer Line
- R - R Road as Completed Line
- Aerial Retardant Drop
- Transmission Lines
- Railroad
- Gas Pipeline
- Roads & Trails**
- Road
- Improved Road
- Unimproved Road
- Trails



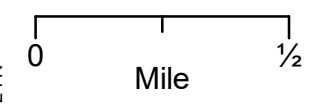
**IAP Map  
Stone Fire  
CA-MDF-001193  
Modoc National Forest**

**8/29/2018  
39,387 Acres 8/28 @ 2234**

**Page 6 of 13**



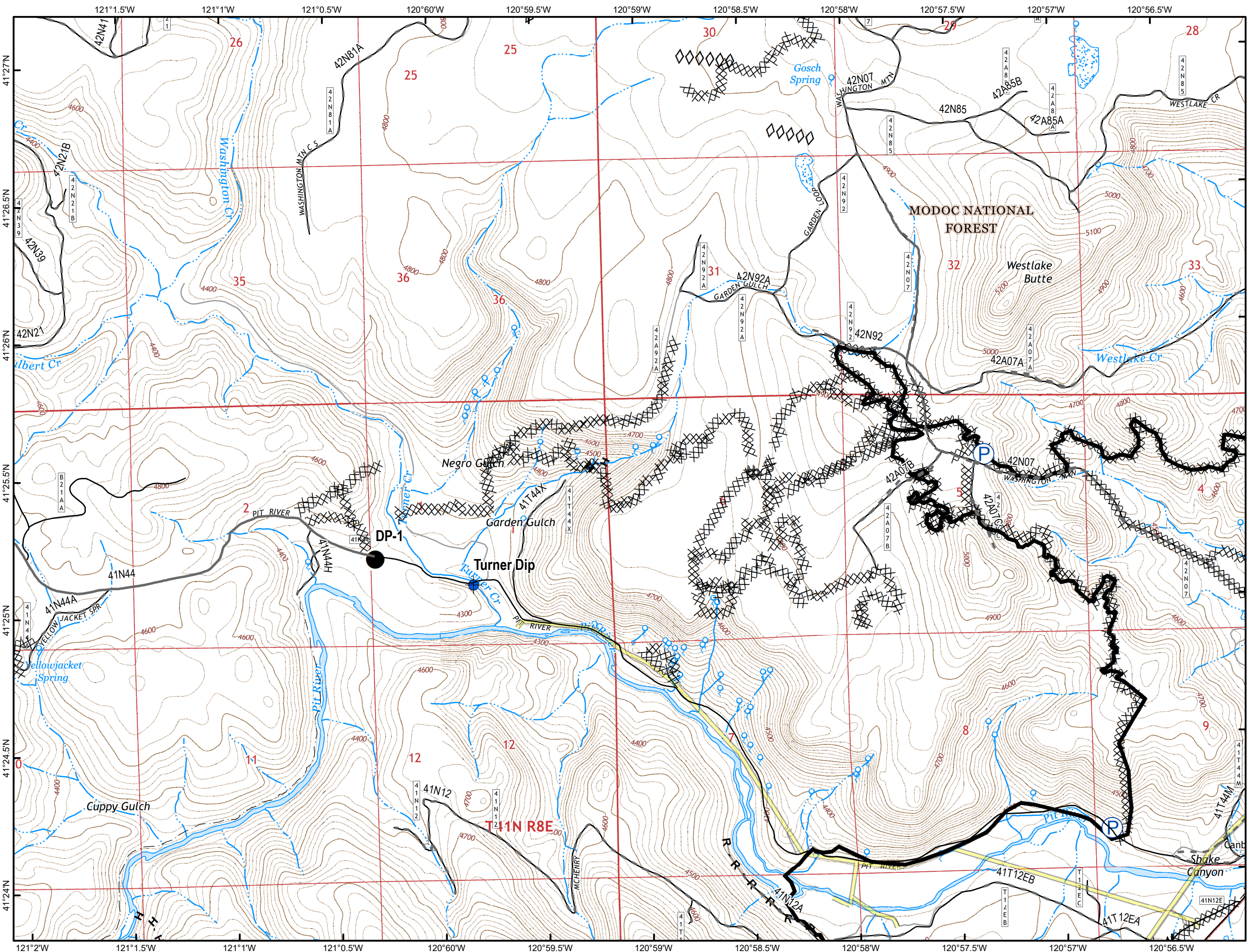
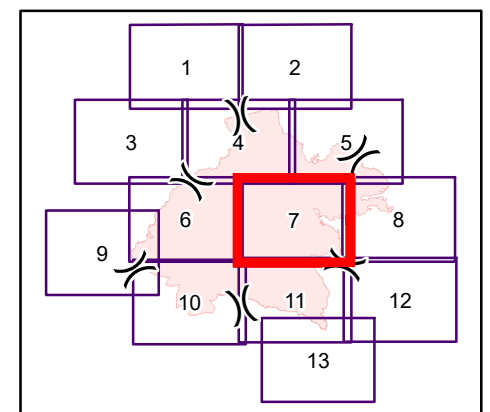
- Dip Site
- Drop Point
- Pump
- Water Source
- Completed Line
- Completed Dozer Line
- R - R Road as Completed Line
- Aerial Retardant Drop
- Transmission Lines
- Lookout
- Roads & Trails**
- Improved Road
- Unimproved Road



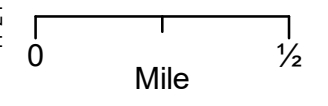
**IAP Map  
Stone Fire  
CA-MDF-001193  
Modoc National Forest**

**8/29/2018  
39,387 Acres 8/28 @ 2234**

**Page 7 of 13**



- Dip Site
  - Drop Point
  - Pump
  - Completed Line
  - Completed Dozer Line
  - H - H Completed Hand Line
  - R - R Road as Completed Line
  - Aerial Retardant Drop
  - Transmission Lines
- Roads & Trails**
- Improved Road
  - Unimproved Road
  - Trails

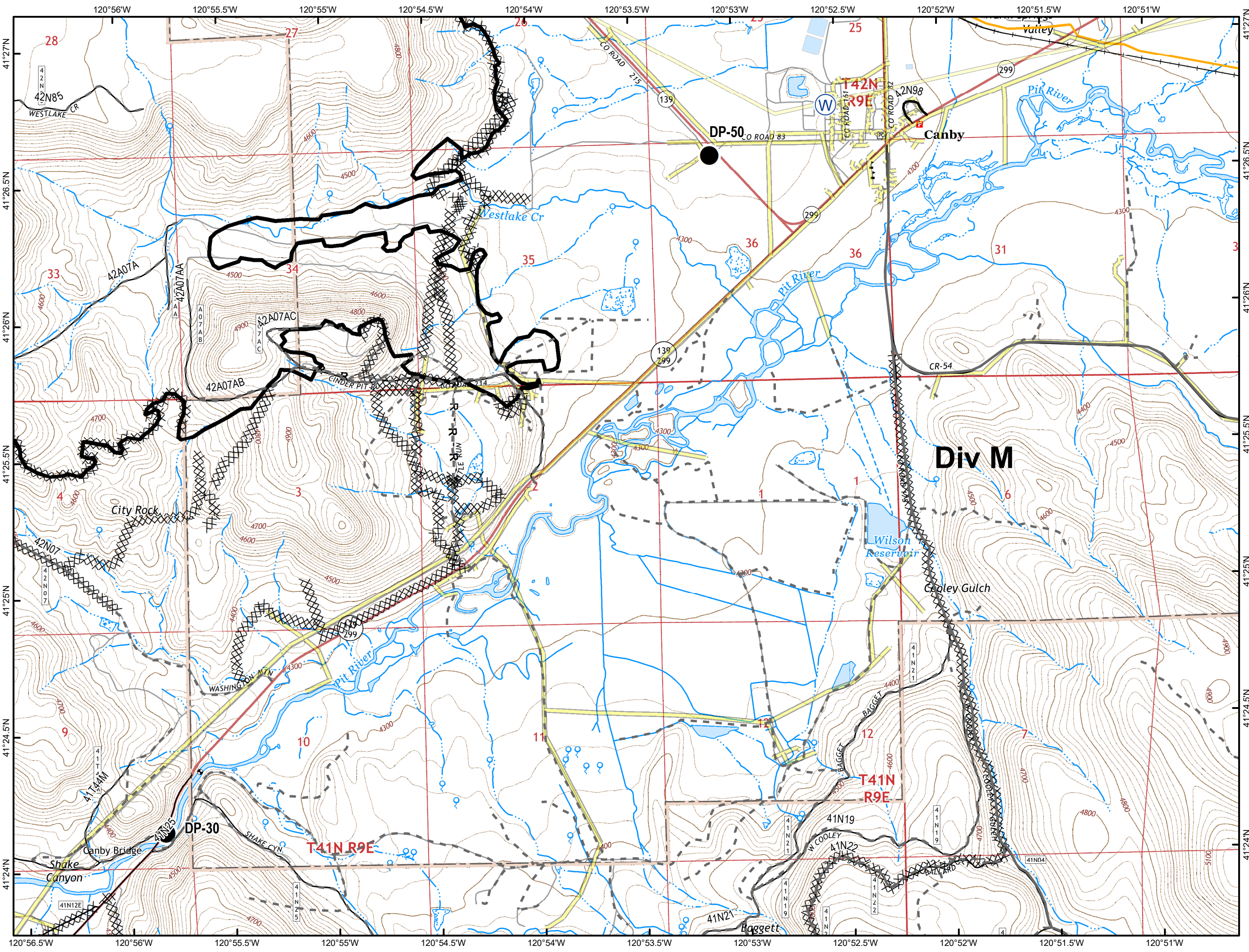
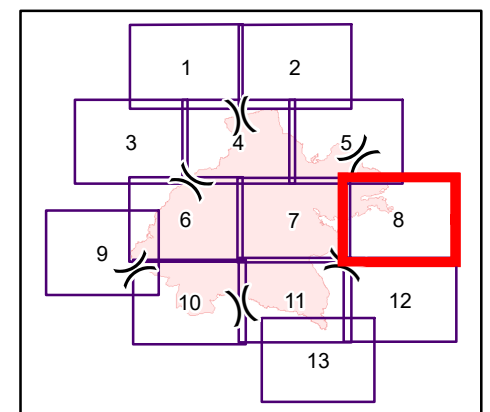




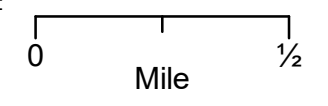
**IAP Map  
Stone Fire  
CA-MDF-001193  
Modoc National Forest**

**8/29/2018  
39,387 Acres 8/28 @ 2234**

**Page 8 of 13**



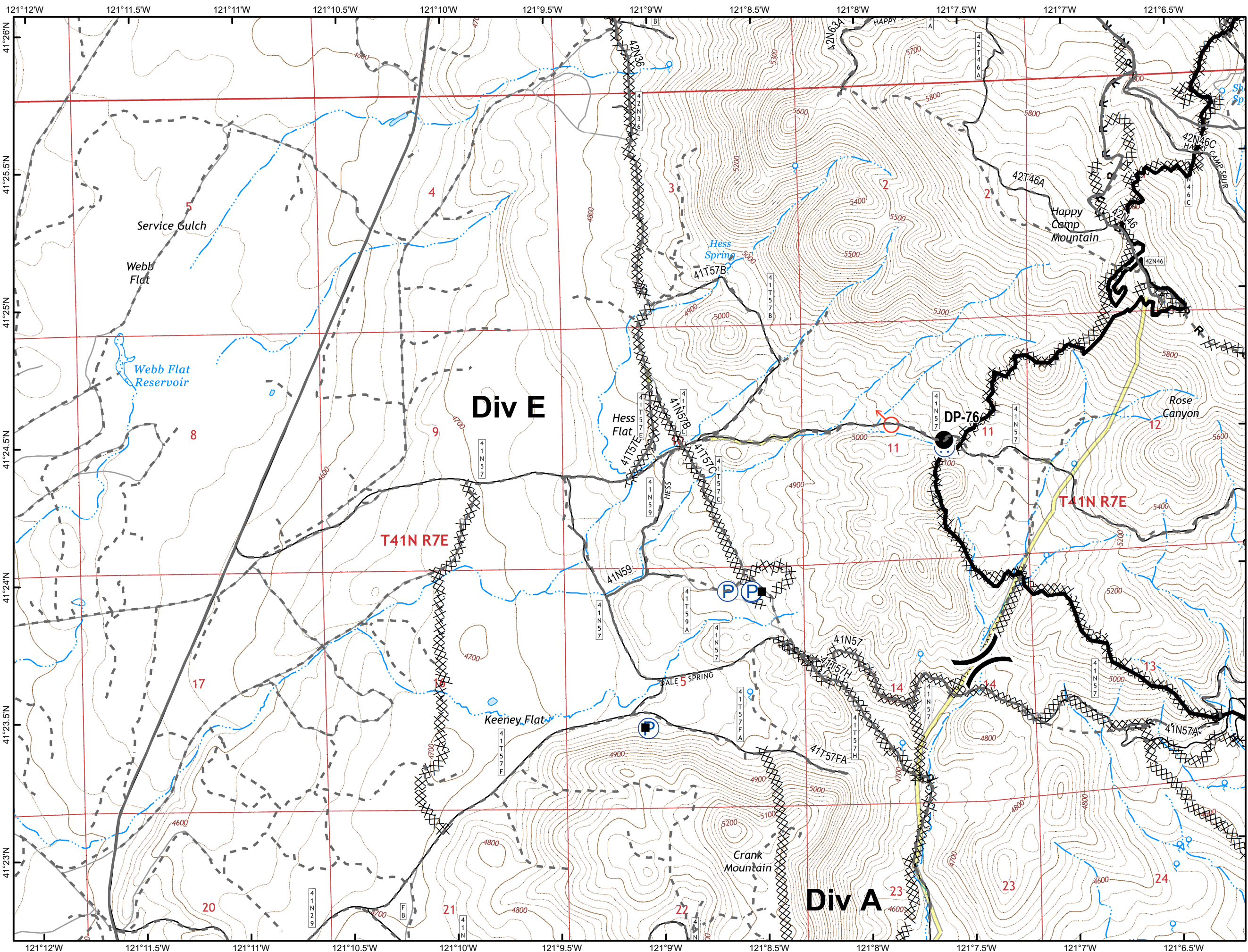
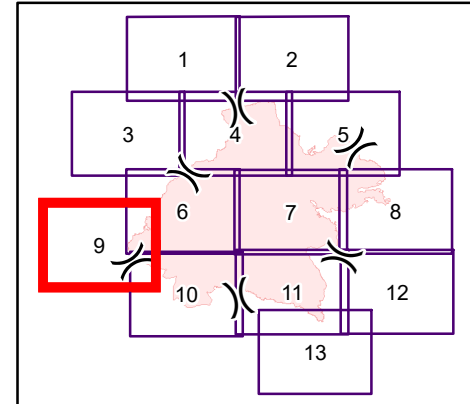
- Drop Point
- ⊙ Water Source
- Completed Line
- ⊗ Completed Dozer Line
- R - R Road as Completed Line
- Transmission Lines
- Railroad
- Gas Pipeline
- Roads & Trails**
- Road
- - - Unimproved Road



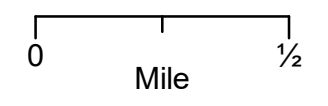
**IAP Map  
Stone Fire  
CA-MDF-001193  
Modoc National Forest**

**8/29/2018  
39,387 Acres 8/28 @ 2234**

**Page 9 of 13**



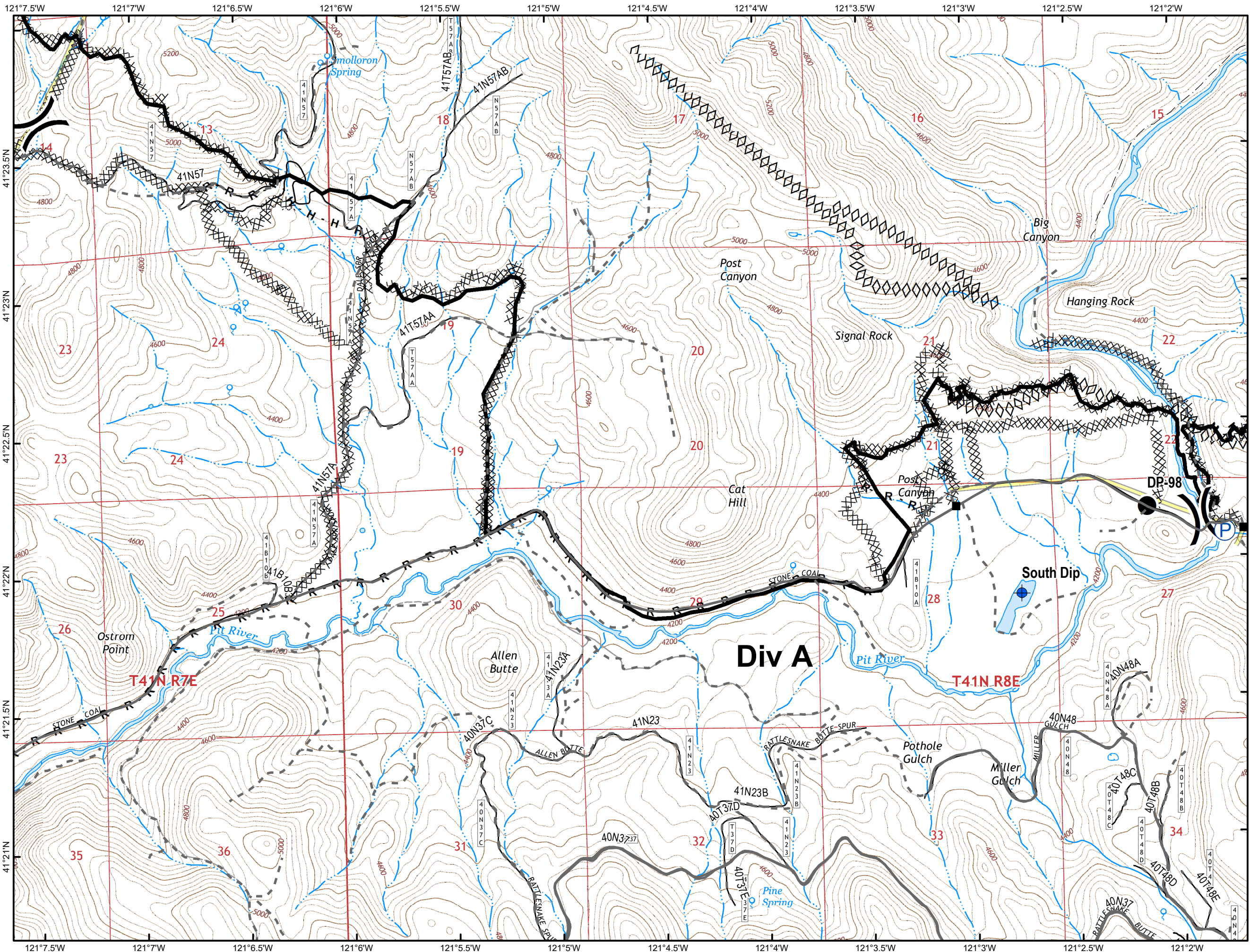
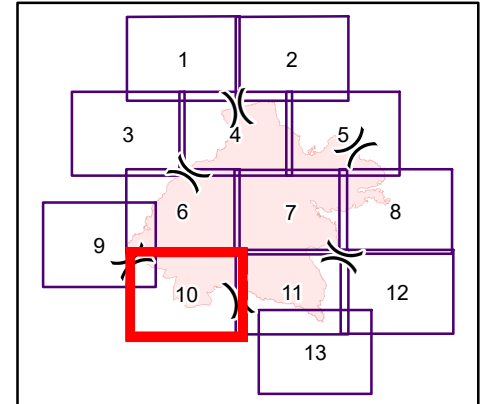
- Structures
- Drop Point
- P Pump
- ♂ Spot Fire
- W Water Source
- Completed Line
- XXXX Completed Dozer Line
- H - H Completed Hand Line
- R - R Road as Completed Line
- Transmission Lines
- 🗨 Lookout
- Roads & Trails**
- Improved Road
- - - Unimproved Road



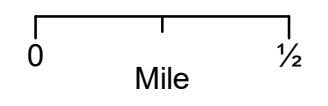
**IAP Map  
Stone Fire  
CA-MDF-001193  
Modoc National Forest**

**8/29/2018  
39,387 Acres 8/28 @ 2234**

**Page 10 of 13**



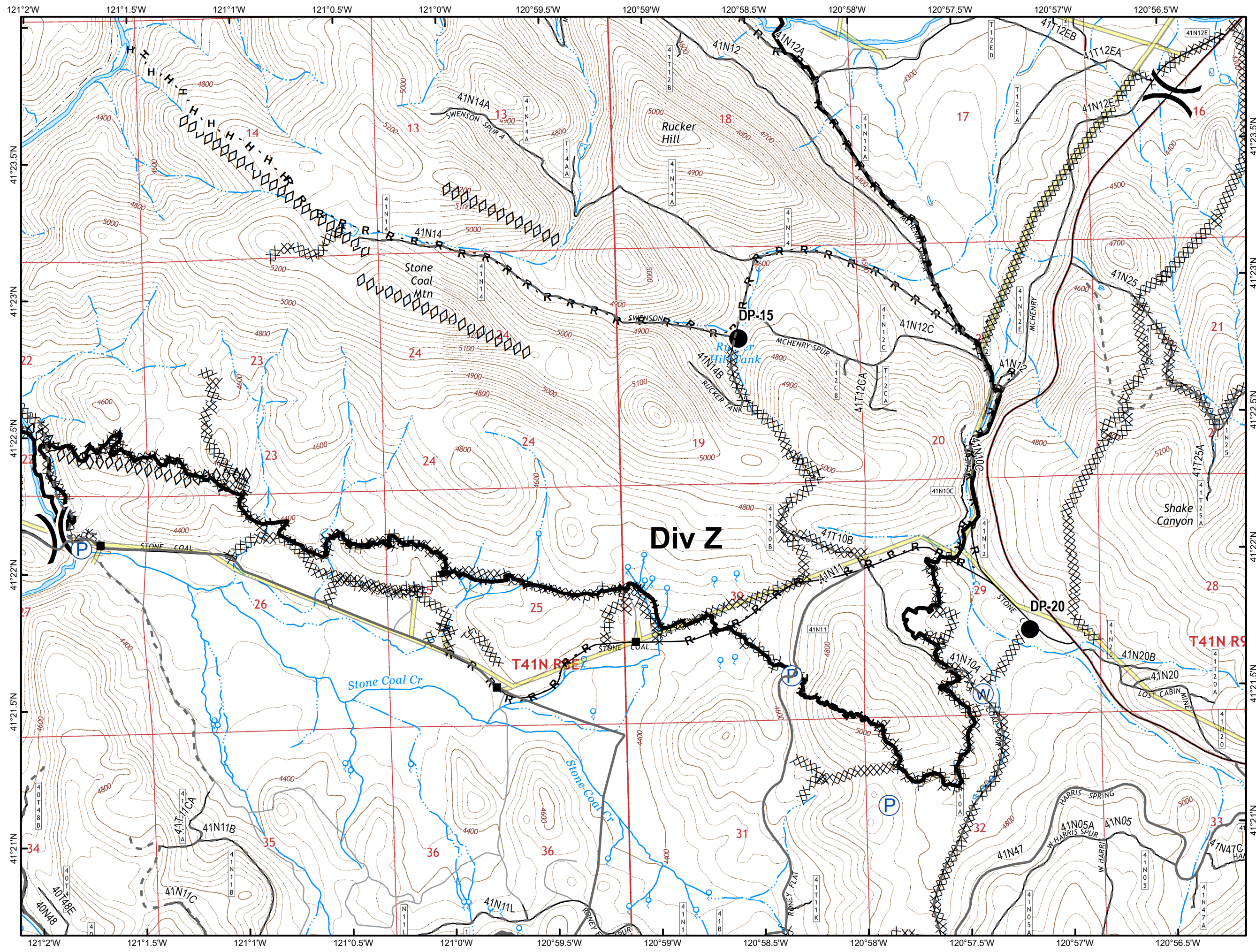
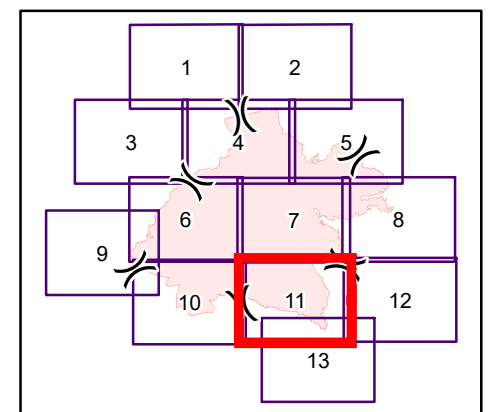
- Structures
- Dip Site
- Drop Point
- Ⓟ Pump
- Completed Line
- XXXX Completed Dozer Line
- H - H Completed Hand Line
- R - R Road as Completed Line
- ◇◇◇ Aerial Retardant Drop
- Transmission Lines
- Roads & Trails**
- Improved Road
- - - Unimproved Road
- · · Trails



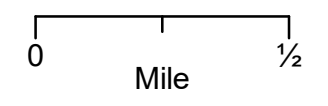
**IAP Map**  
**Stone Fire**  
**CA-MDF-001193**  
**Modoc National Forest**

**8/29/2018**  
**39,387 Acres 8/28 @ 2234**

**Page 11 of 13**



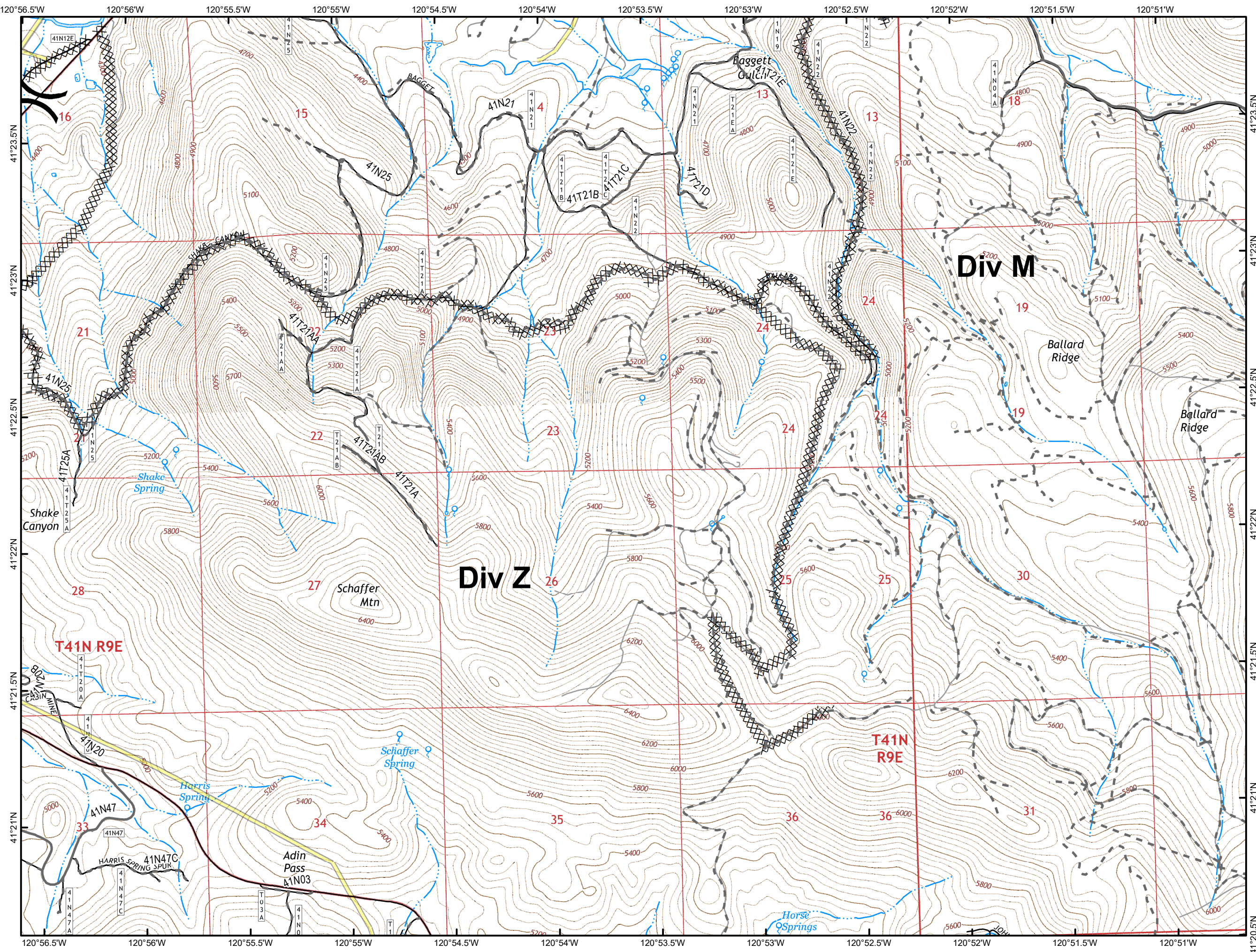
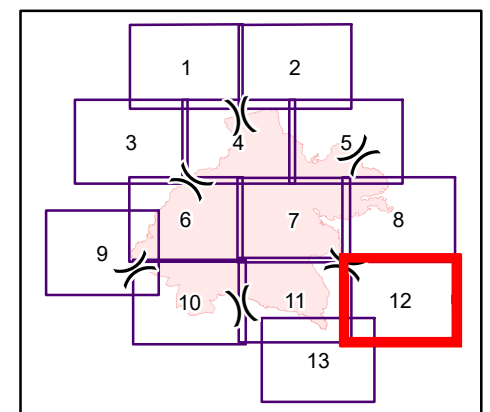
- Structures
- Drop Point
- (P) Pump
- (W) Water Source
- Completed Line
- XXXX Completed Dozer Line
- H - H Completed Hand Line
- R - R Road as Completed Line
- ◇◇◇ Aerial Retardant Drop
- Transmission Lines
- Roads & Trails**
- Improved Road
- - - Unimproved Road
- · · Trails



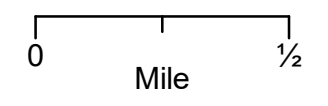
**IAP Map  
Stone Fire  
CA-MDF-001193  
Modoc National Forest**

**8/29/2018  
39,387 Acres 8/28 @ 2234**

**Page 12 of 13**



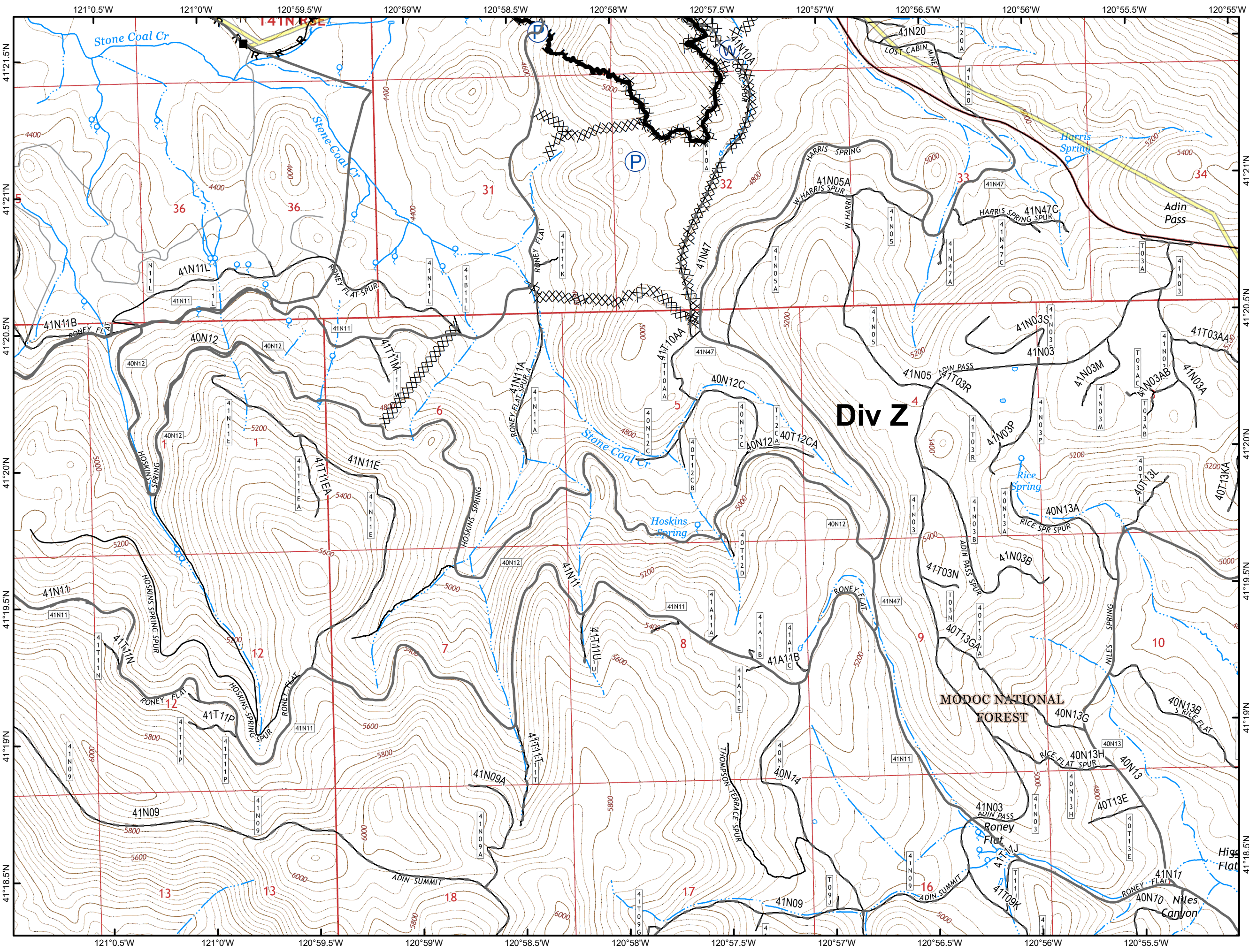
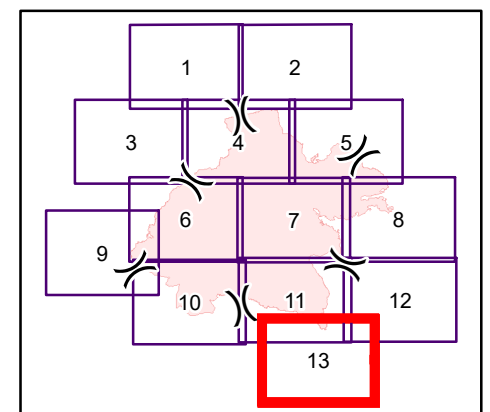
- XXXX Completed Dozer Line
- Transmission Lines
- Roads & Trails**
- Improved Road
- - - Unimproved Road



**IAP Map**  
**Stone Fire**  
**CA-MDF-001193**  
**Modoc National Forest**

**8/29/2018**  
**39,387 Acres 8/28 @ 2234**

**Page 13 of 13**



- Structures
- (P) Pump
- (W) Water Source
- Completed Line
- XXXX Completed Dozer Line
- H - H Completed Hand Line
- R - R Road as Completed Line
- Transmission Lines
- Roads & Trails**
- Improved Road
- - - Unimproved Road

