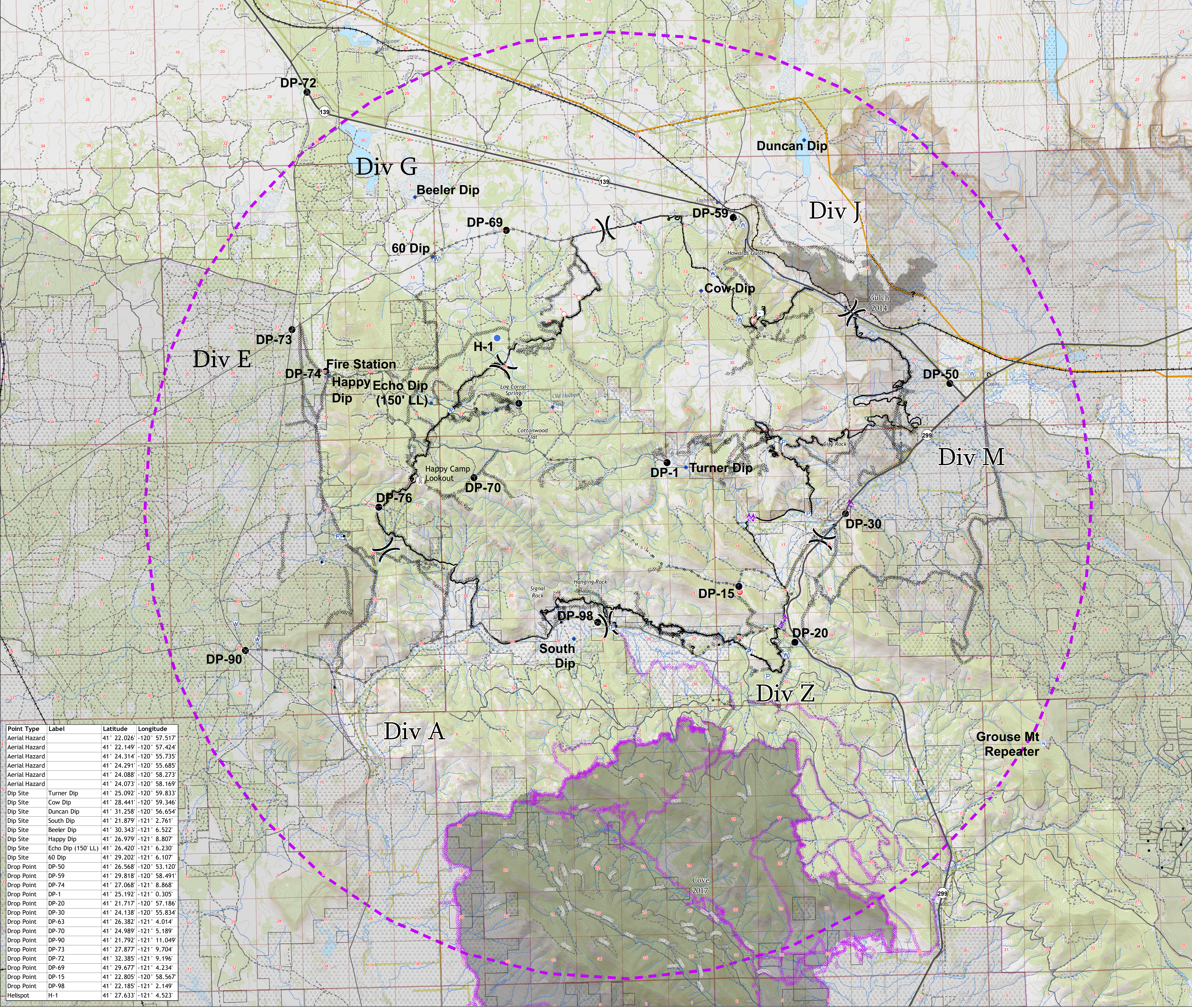




Air Operations Map
Stone Fire
 August 30, 2018
 39,387 Acres
 CA-MDF-001193

- Aerial Hazard
- Dip Site
- Drop Point
- Gate
- Helispot
- Hot Spot
- Landmark
- Pump
- Repeater
- Spot Fire
- Water Source
- Water Tank
- Unknown
- Other
- Division Break
- Lookout
- Structures
- Controlled Line
- Completed Dozer Line
- Completed Hand Line
- Road as Completed Line
- Private Lands
- Historic Dozer Line
- Historic Fire Perimeter
- Railroad
- Transmission Line
- Gas Pipeline

- Roads & Trails**
- Road
 - Improved Road
 - Unimproved Road
 - Trails
- Direct Protection Areas**
- Local
 - CAL Fire



Point Type	Label	Latitude	Longitude
Aerial Hazard		41° 22.026'	-120° 57.517'
Aerial Hazard		41° 22.149'	-120° 57.424'
Aerial Hazard		41° 24.314'	-120° 55.735'
Aerial Hazard		41° 24.291'	-120° 55.685'
Aerial Hazard		41° 24.088'	-120° 58.273'
Aerial Hazard		41° 24.073'	-120° 58.169'
Dip Site	Turner Dip	41° 25.092'	-120° 59.833'
Dip Site	Cow Dip	41° 28.441'	-120° 59.346'
Dip Site	Duncan Dip	41° 31.258'	-120° 56.654'
Dip Site	South Dip	41° 21.879'	-121° 2.761'
Dip Site	Beeler Dip	41° 30.343'	-121° 6.522'
Dip Site	Happy Dip	41° 26.979'	-121° 8.807'
Dip Site	Echo Dip (150' LL)	41° 26.420'	-121° 6.230'
Dip Site	60 Dip	41° 29.202'	-121° 6.107'
Drop Point	DP-50	41° 26.568'	-120° 53.120'
Drop Point	DP-59	41° 29.818'	-120° 58.491'
Drop Point	DP-74	41° 27.068'	-121° 8.868'
Drop Point	DP-1	41° 25.192'	-121° 0.305'
Drop Point	DP-20	41° 21.717'	-120° 57.186'
Drop Point	DP-30	41° 24.138'	-120° 55.834'
Drop Point	DP-63	41° 26.382'	-121° 4.014'
Drop Point	DP-70	41° 24.989'	-121° 5.189'
Drop Point	DP-90	41° 21.792'	-121° 11.049'
Drop Point	DP-73	41° 27.877'	-121° 9.704'
Drop Point	DP-72	41° 32.385'	-121° 9.196'
Drop Point	DP-69	41° 29.677'	-121° 4.234'
Drop Point	DP-15	41° 22.805'	-120° 58.567'
Drop Point	DP-98	41° 22.185'	-121° 2.149'
Helispot	H-1	41° 27.633'	-121° 4.523'

