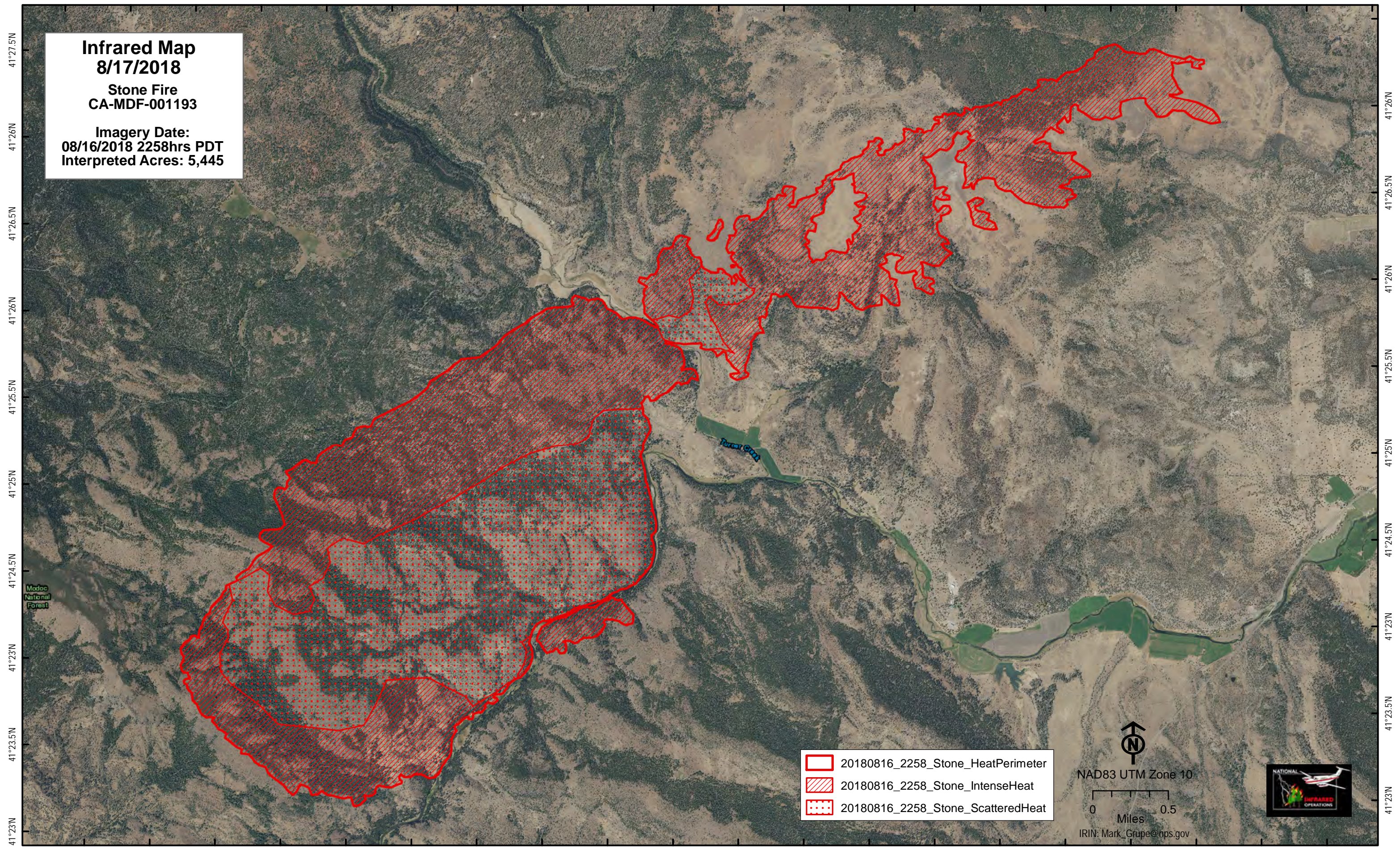


121°5'W 121°4.5'W 121°4'W 121°3.5'W 121°3'W 121°2.5'W 121°2'W 121°1.5'W 121°1'W 121°0.5'W 120°60'W 120°59.5'W 120°59'W 120°58.5'W 120°58'W 120°57.5'W 120°57'W 120°56.5'W 120°56'W 120°55.5'W 120°55'W

Infrared Map
8/17/2018
Stone Fire
CA-MDF-001193

Imagery Date:
08/16/2018 2258hrs PDT
Interpreted Acres: 5,445







41°27.5'N
41°26'N
41°26.5'N
41°26'N
41°25.5'N
41°25'N
41°25'N
41°24.5'N
41°23'N
41°23.5'N
41°23'N

41°26'N
41°26.5'N
41°26'N
41°25.5'N
41°25'N
41°24.5'N
41°23'N
41°23.5'N
41°23'N

Madoc
National
Forest

121°5'W 121°4.5'W 121°4'W 121°3.5'W 121°3'W 121°2.5'W 121°2'W 121°1.5'W 121°1'W 121°0.5'W 121°W 120°59.5'W 120°59'W 120°58.5'W 120°58'W 120°57.5'W 120°57'W 120°56.5'W 120°56'W 120°55.5'W

-  20180816_2258_Stone_HeatPerimeter
-  20180816_2258_Stone_IntenseHeat
-  20180816_2258_Stone_ScatteredHeat


NAD83 UTM Zone 10
0 Miles 0.5
IRIN: Mark_Grupe@nps.gov

