

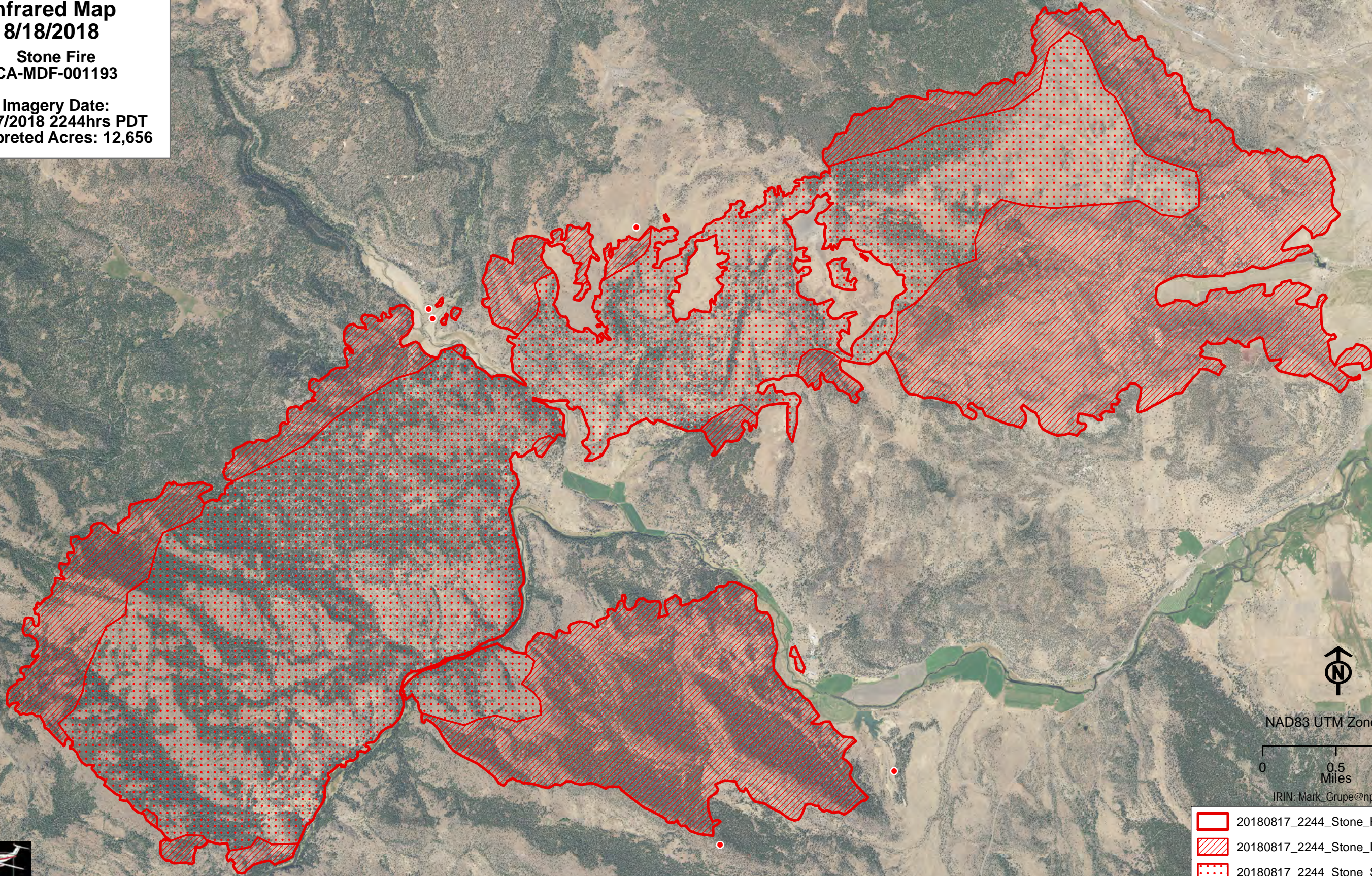
121°5'W 121°4.5'W 121°4'W 121°3.5'W 121°3'W 121°2.5'W 121°2'W 121°1.5'W 121°1'W 121°0.5'W 120°60'W 120°59.5'W 120°59'W 120°58.5'W 120°58'W 120°57.5'W 120°57'W 120°56.5'W 120°56'W 120°55.5'W 120°55'W 120°54.5'W 120°54'W 120°53.5'W


41°28'N
41°27.5'N
41°26'N
41°26.5'N
41°26'N
41°25.5'N
41°25'N
41°24.5'N
41°23'N
41°23.5'N
41°23'N

41°28'N
41°27.5'N
41°26'N
41°26.5'N
41°26'N
41°25.5'N
41°25'N
41°24.5'N
41°23'N
41°23.5'N
41°23'N

Infrared Map
8/18/2018
Stone Fire
CA-MDF-001193

Imagery Date:
08/17/2018 2244hrs PDT
Interpreted Acres: 12,656




NAD83 UTM Zone 10
0 0.5 1
Miles
IRIN: Mark_Grupe@nps.gov

-  20180817_2244_Stone_HeatPerimeter
-  20180817_2244_Stone_IntenseHeat
-  20180817_2244_Stone_ScatteredHeat
-  20180817_2244_Stone_IsolatedHeat



121°5'W 121°4.5'W 121°4'W 121°3.5'W 121°3'W 121°2.5'W 121°2'W 121°1.5'W 121°1'W 121°0.5'W 120°60'W 120°59.5'W 120°59'W 120°58.5'W 120°58'W 120°57.5'W 120°57'W 120°56.5'W 120°56'W 120°55.5'W 120°55'W 120°54.5'W 120°54'W 120°53.5'W