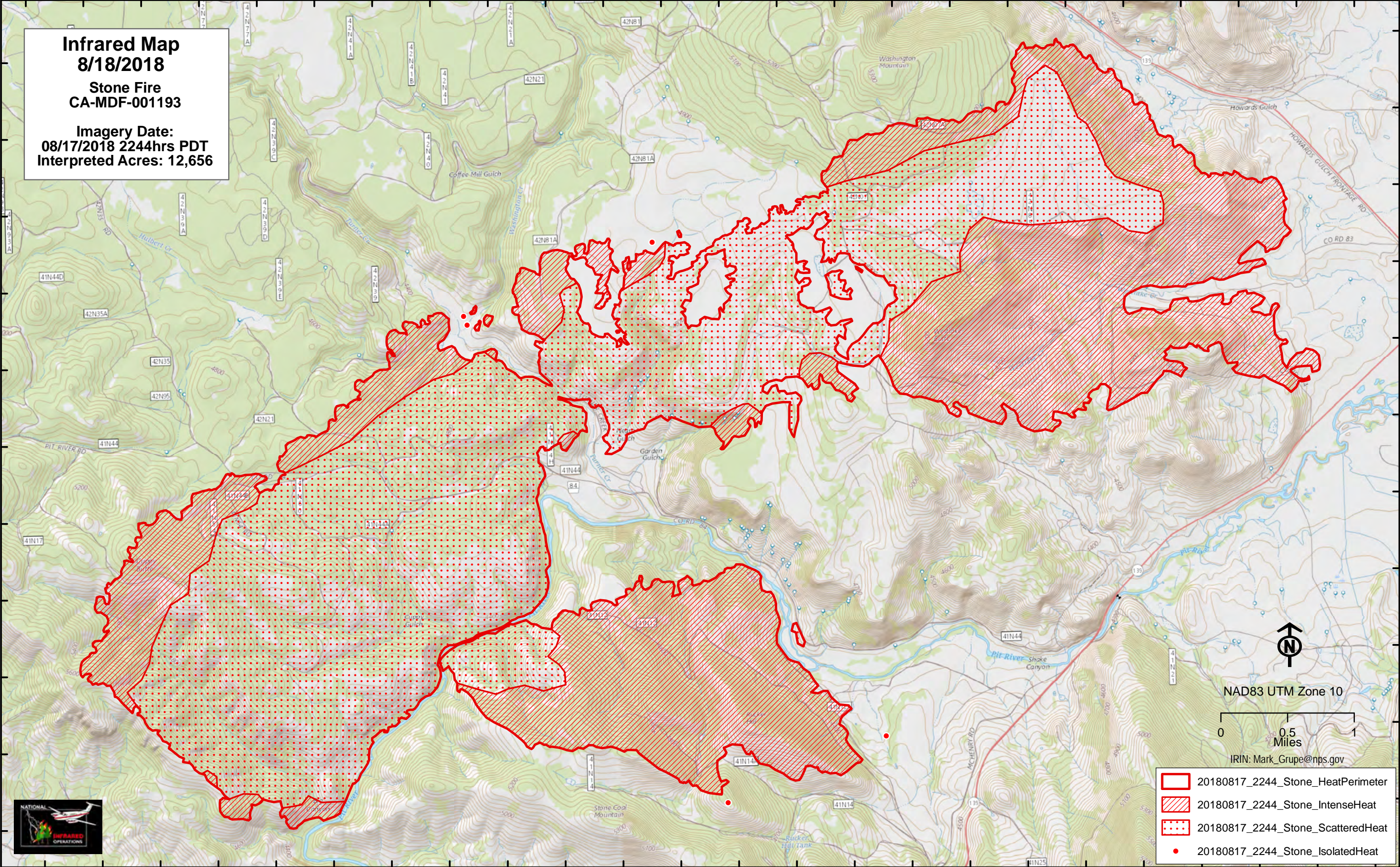


121°5'W 121°4.5'W 121°4'W 121°3.5'W 121°3'W 121°2.5'W 121°2'W 121°1.5'W 121°1'W 121°0.5'W 120°60'W 120°59.5'W 120°59'W 120°58.5'W 120°58'W 120°57.5'W 120°57'W 120°56.5'W 120°56'W 120°55.5'W 120°55'W 120°54.5'W 120°54'W 120°53.5'W

41°28'N  
41°27.5'N  
41°26'N  
41°26.5'N  
41°26'N  
41°25.5'N  
41°25'N  
41°24.5'N  
41°23'N  
41°23.5'N  
41°23'N

41°28'N  
41°27.5'N  
41°26'N  
41°26.5'N  
41°26'N  
41°25.5'N  
41°25'N  
41°24.5'N  
41°23'N  
41°23.5'N  
41°23'N





**Infrared Map**  
**8/18/2018**  
**Stone Fire**  
**CA-MDF-001193**  
  
**Imagery Date:**  
**08/17/2018 2244hrs PDT**  
**Interpreted Acres: 12,656**



NAD83 UTM Zone 10

0 0.5 1  
Miles

IRIN: [Mark\\_Grupe@nps.gov](mailto:Mark_Grupe@nps.gov)

-  20180817\_2244\_Stone\_HeatPerimeter
-  20180817\_2244\_Stone\_IntenseHeat
-  20180817\_2244\_Stone\_ScatteredHeat
-  20180817\_2244\_Stone\_IsolatedHeat

