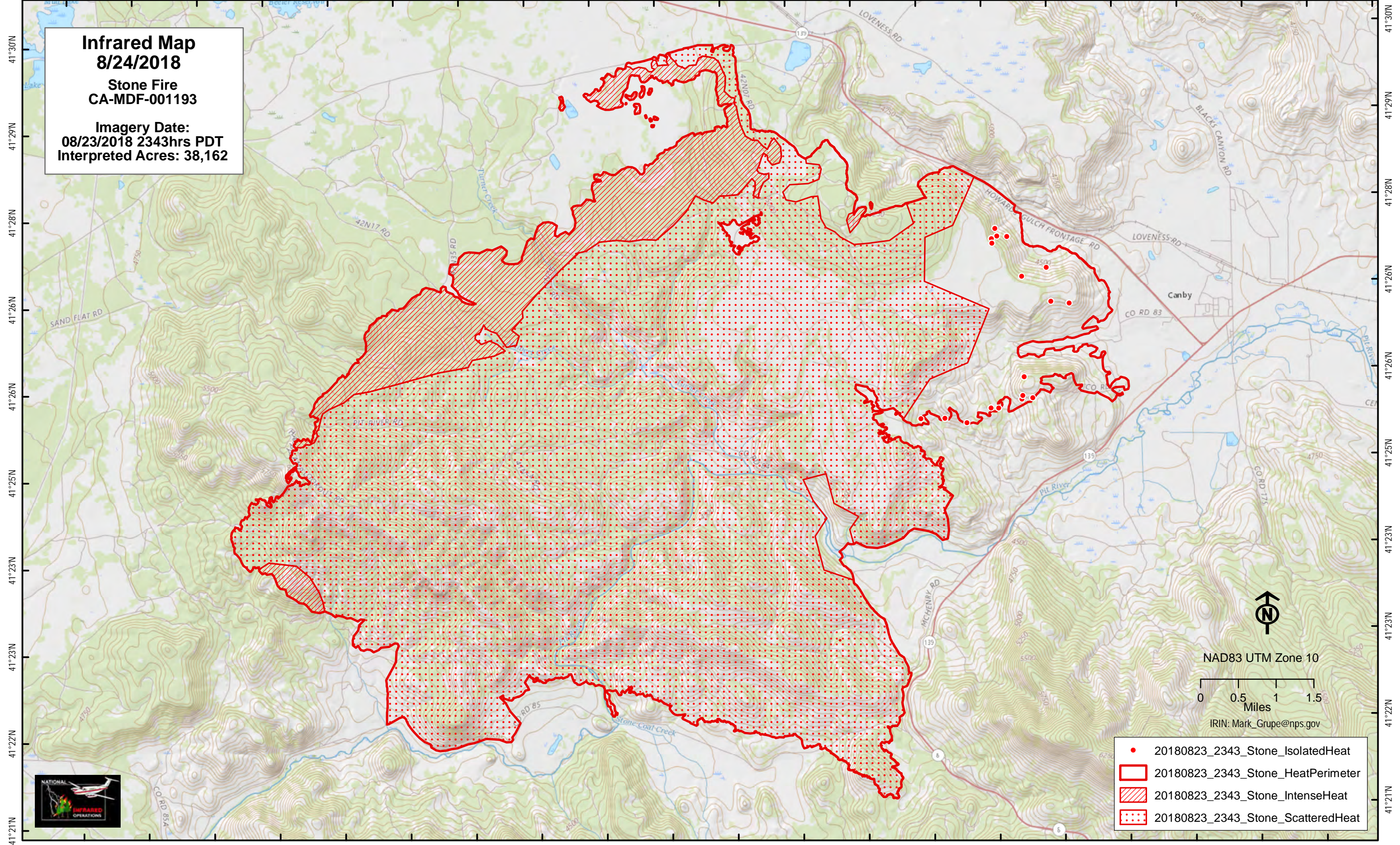


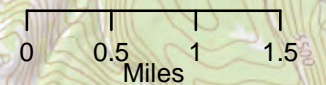
121°10'W 121°8'W 121°8'W 121°7'W 121°6'W 121°5'W 121°4'W 121°3'W 121°2'W 121°1'W 121°W 120°59'W 120°58'W 120°56'W 120°56'W 120°55'W 120°53'W 120°53'W 120°52'W 120°51'W 120°50'W



**Infrared Map**  
**8/24/2018**  
**Stone Fire**  
**CA-MDF-001193**  
  
**Imagery Date:**  
**08/23/2018 2343hrs PDT**  
**Interpreted Acres: 38,162**

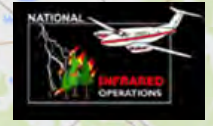


NAD83 UTM Zone 10



IRIN: Mark\_Grupe@nps.gov

- 20180823\_2343\_Stone\_IsolatedHeat
- 20180823\_2343\_Stone\_HeatPerimeter
- 20180823\_2343\_Stone\_IntenseHeat
- 20180823\_2343\_Stone\_ScatteredHeat



121°10'W 121°8'W 121°8'W 121°7'W 121°6'W 121°5'W 121°4'W 121°3'W 121°2'W 121°1'W 121°W 120°59'W 120°58'W 120°56'W 120°56'W 120°55'W 120°53'W 120°53'W 120°52'W 120°51'W

41°30'N  
41°29'N  
41°28'N  
41°26'N  
41°26'N  
41°25'N  
41°23'N  
41°23'N  
41°23'N  
41°22'N  
41°21'N

41°30'N  
41°29'N  
41°28'N  
41°26'N  
41°26'N  
41°25'N  
41°23'N  
41°23'N  
41°23'N  
41°22'N  
41°21'N