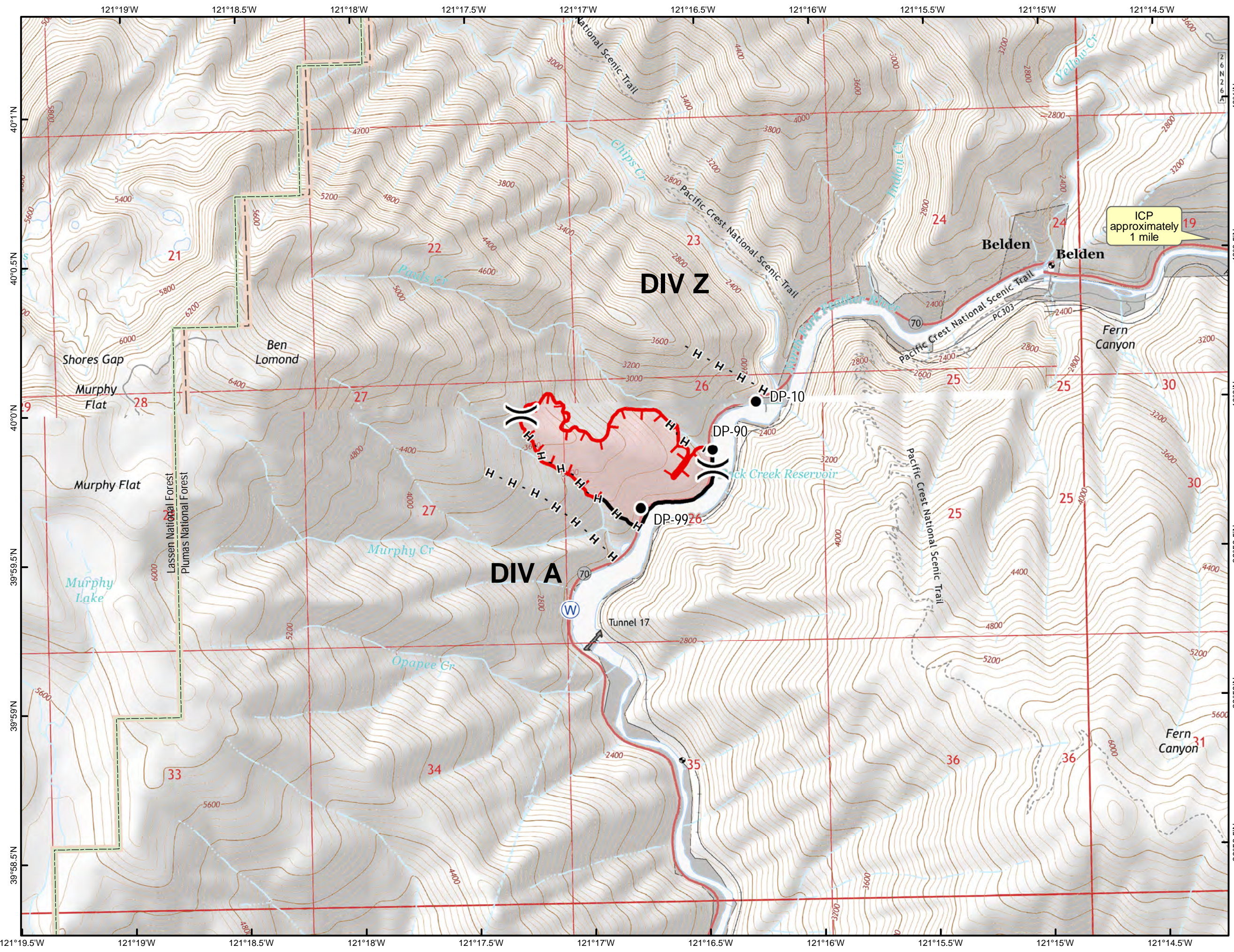


# Murphy Fire CAPNF-001500 Plumas National Forest

## IAP Map 8/10/2018 Day Shift



ICP approximately 1 mile

- Division Break
- Drop Point
- Incident Command Post
- Water Source
- Completed Line
- Uncontrolled Fire Edge
- Completed Hand Line
- National Forest Boundary
- Non-FS Lands

