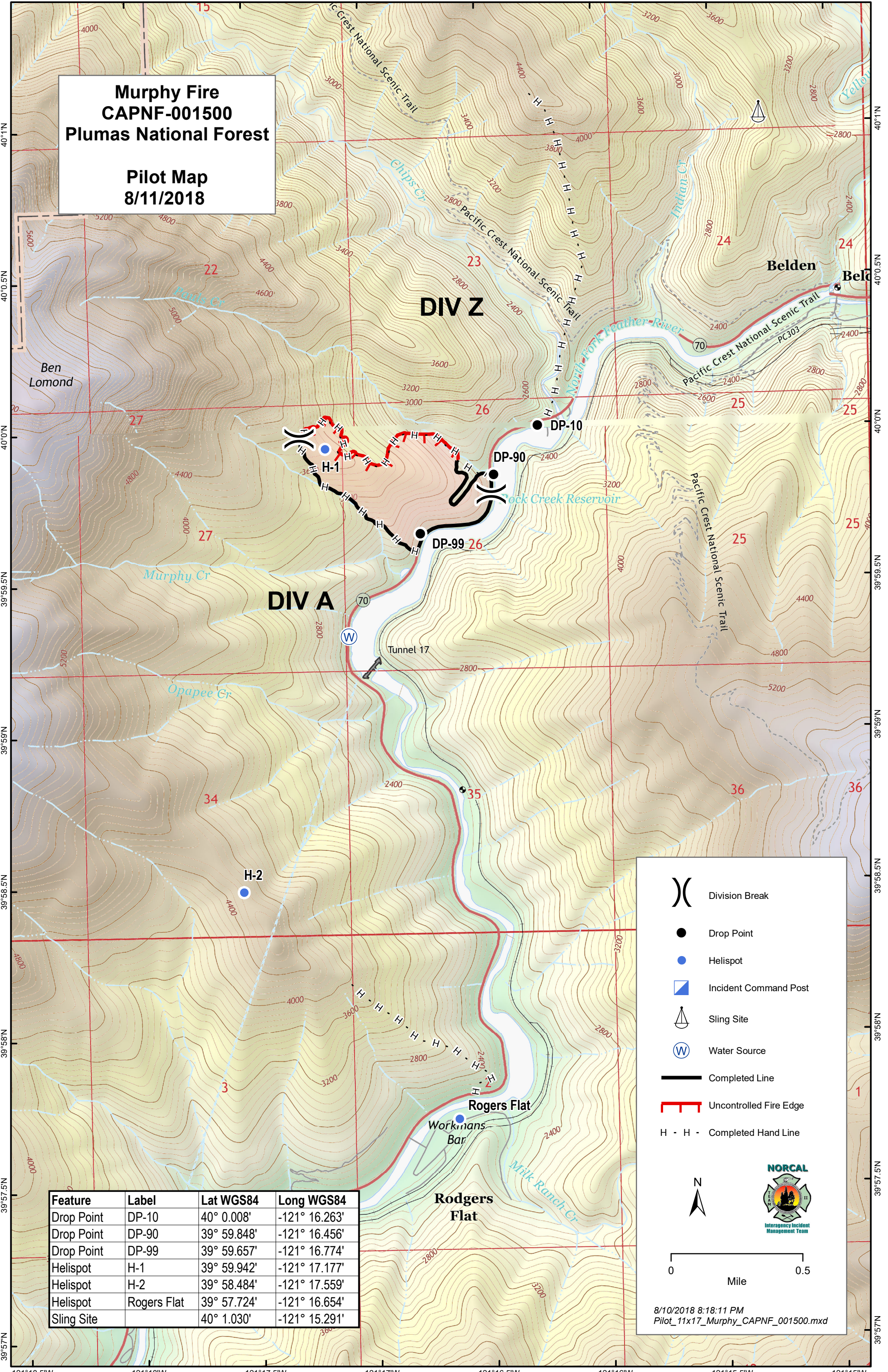


**Murphy Fire  
CAPNF-001500  
Plumas National Forest**

**Pilot Map  
8/11/2018**



Feature	Label	Lat WGS84	Long WGS84
Drop Point	DP-10	40° 0.008'	-121° 16.263'
Drop Point	DP-90	39° 59.848'	-121° 16.456'
Drop Point	DP-99	39° 59.657'	-121° 16.774'
Helispot	H-1	39° 59.942'	-121° 17.177'
Helispot	H-2	39° 58.484'	-121° 17.559'
Helispot	Rogers Flat	39° 57.724'	-121° 16.654'
Sling Site		40° 1.030'	-121° 15.291'

- Division Break
- Drop Point
- Helispot
- Incident Command Post
- Sling Site
- Water Source
- Completed Line
- Uncontrolled Fire Edge
- Completed Hand Line

**NORCAL**  
Interagency Incident Management Team

0 Mile 0.5

8/10/2018 8:18:11 PM  
Pilot\_11x17\_Murphy\_CAPNF\_001500.mxd