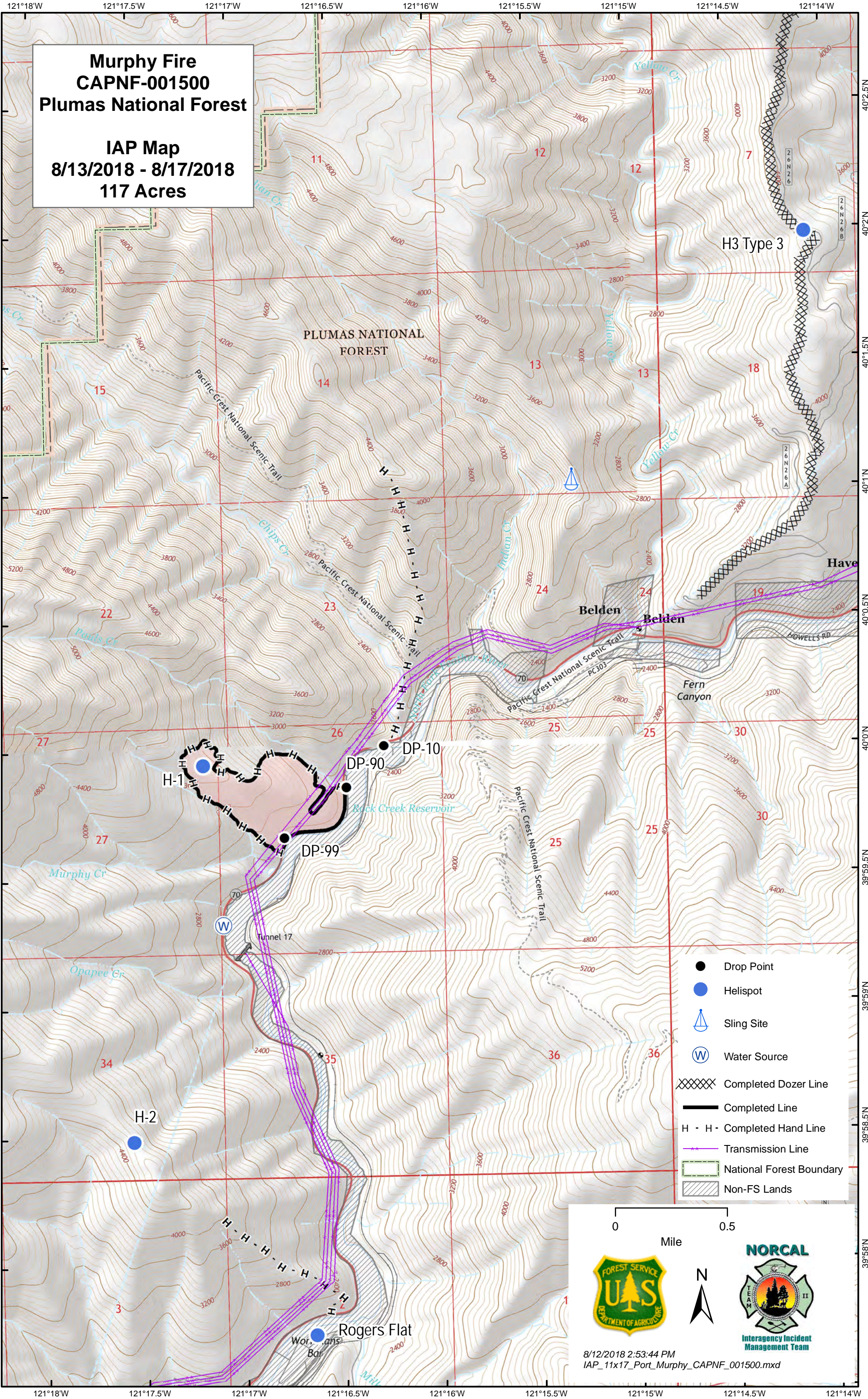





**Murphy Fire  
CAPNF-001500  
Plumas National Forest**

**IAP Map  
8/13/2018 - 8/17/2018  
117 Acres**



- Drop Point
- Helispot
- ⚙ Sling Site
- Ⓜ Water Source
- XXXXX Completed Dozer Line
- Completed Line
- H - H - Completed Hand Line
- Transmission Line
- ▭ National Forest Boundary
- ▨ Non-FS Lands

0 0.5  
Mile

8/12/2018 2:53:44 PM  
IAP\_11x17\_Port\_Murphy\_CAPNF\_001500.mxd