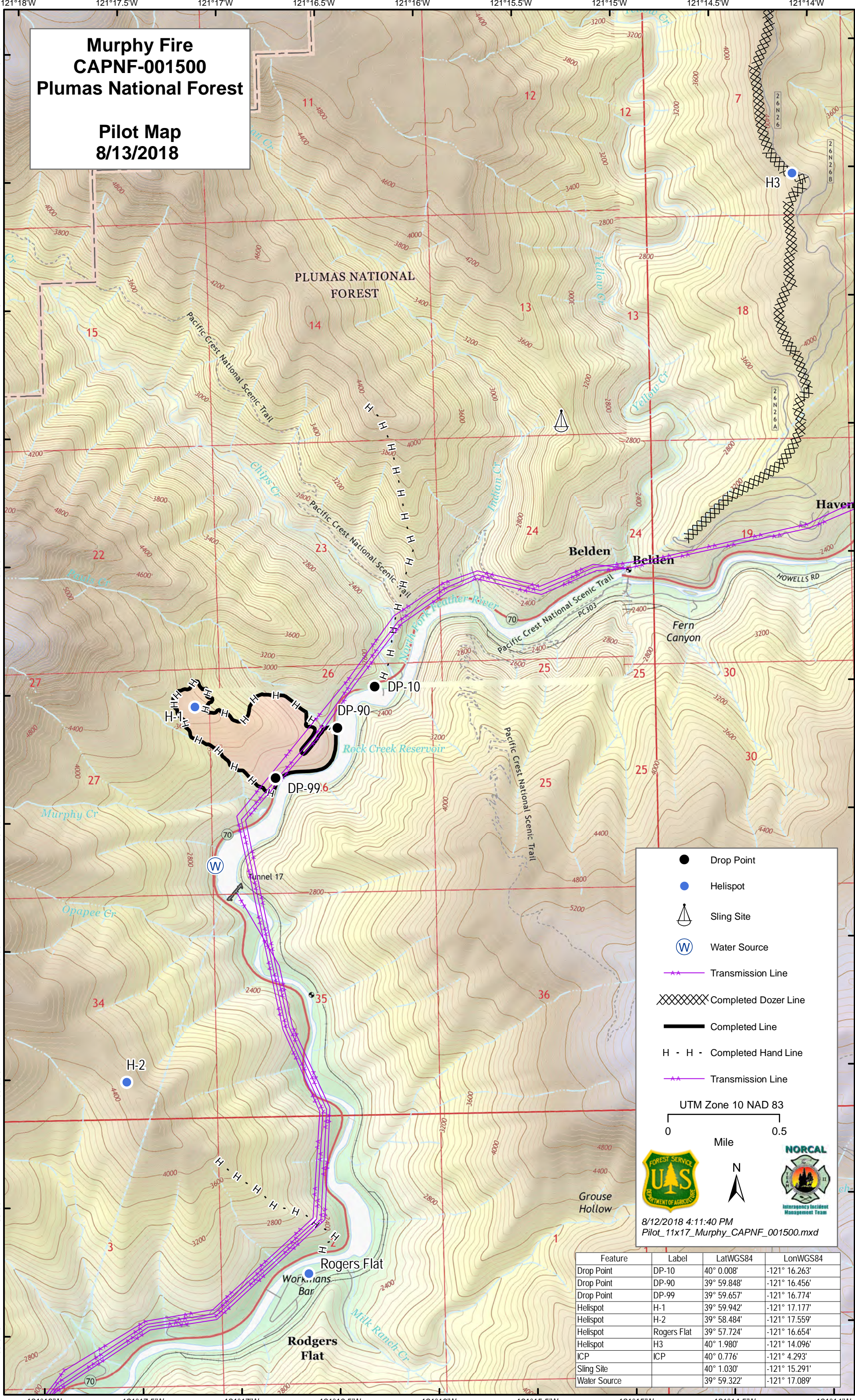


**Murphy Fire  
CAPNF-001500  
Plumas National Forest**

**Pilot Map  
8/13/2018**



- Drop Point
- Helispot
- Sling Site
- Water Source
- Transmission Line
- Completed Dozer Line
- Completed Line
- Completed Hand Line
- Transmission Line

UTM Zone 10 NAD 83

0 0.5 Mile

N

8/12/2018 4:11:40 PM  
Pilot\_11x17\_Murphy\_CAPNF\_001500.mxd

Feature	Label	LatWGS84	LonWGS84
Drop Point	DP-10	40° 0.008'	-121° 16.263'
Drop Point	DP-90	39° 59.848'	-121° 16.456'
Drop Point	DP-99	39° 59.657'	-121° 16.774'
Helispot	H-1	39° 59.942'	-121° 17.177'
Helispot	H-2	39° 58.484'	-121° 17.559'
Helispot	Rogers Flat	39° 57.724'	-121° 16.654'
Helispot	H3	40° 1.980'	-121° 14.096'
ICP	ICP	40° 0.776'	-121° 4.293'
Sling Site		40° 1.030'	-121° 15.291'
Water Source		39° 59.322'	-121° 17.089'