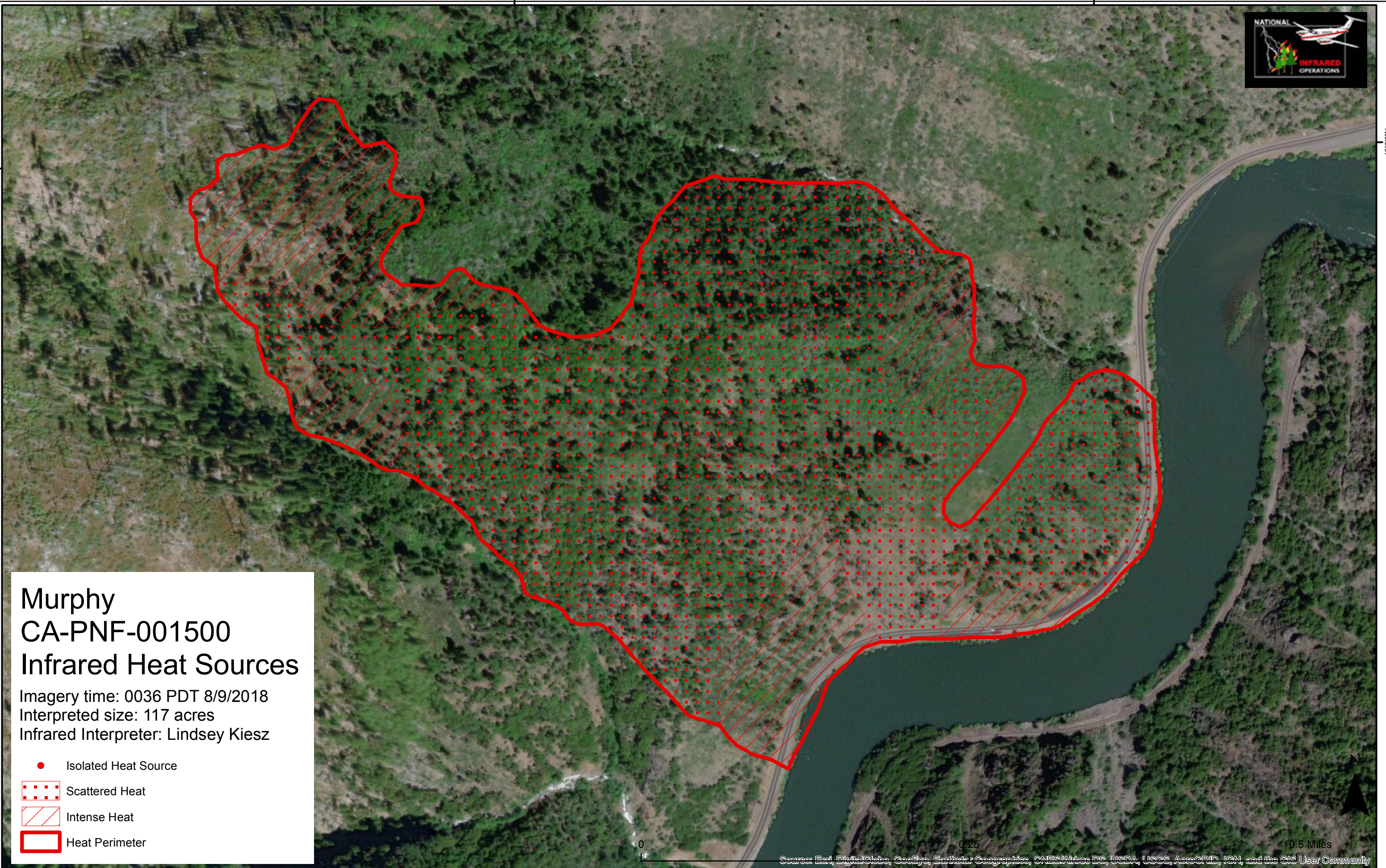


40°00'N



# Murphy CA-PNF-001500 Infrared Heat Sources

Imagery time: 0036 PDT 8/9/2018  
Interpreted size: 117 acres  
Infrared Interpreter: Lindsey Kiesz

- Isolated Heat Source
- ▤ Scattered Heat
- ▨ Intense Heat
- ▭ Heat Perimeter

0 0.25 0.5 Miles

Sources: Esri, DigitalGlobe, GeoEye, Earthstar Geographics, CNES/Airbus DS, USDA, USGS, AeroGRID, IGN, and the GIS User Community

121°17'0"W

121°16'30"W

