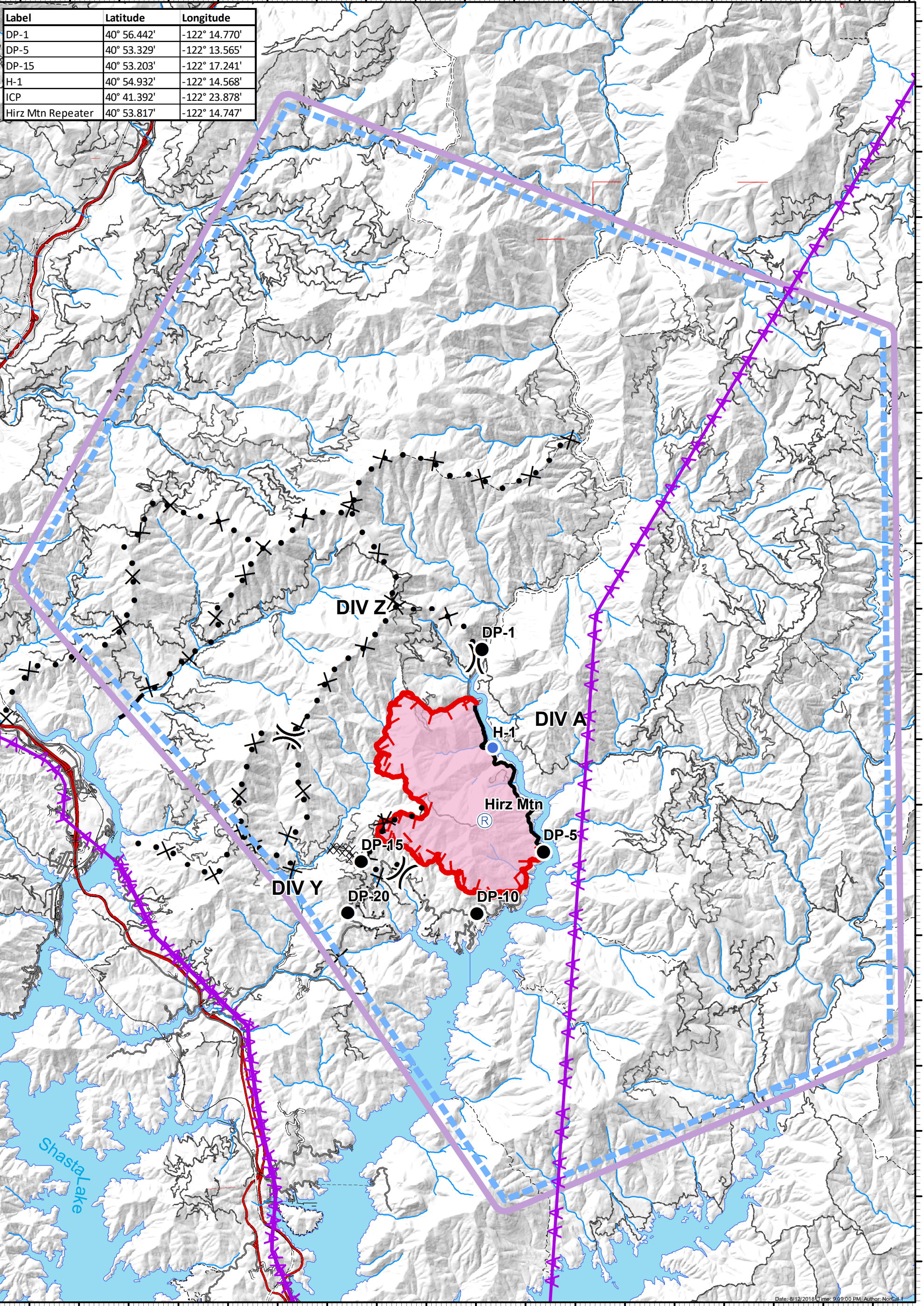


122°24'W 122°23'W 122°22'W 122°21'W 122°20'W 122°19'W 122°18'W 122°17'W 122°16'W 122°15'W 122°14'W 122°13'W 122°12'W 122°11'W 122°10'W 122°9'W 122°8'W 122°7'W 122°6'W

Label	Latitude	Longitude
DP-1	40° 56.442'	-122° 14.770'
DP-5	40° 53.329'	-122° 13.565'
DP-15	40° 53.203'	-122° 17.241'
H-1	40° 54.932'	-122° 14.568'
ICP	40° 41.392'	-122° 23.878'
Hirz Mtn Repeater	40° 53.817'	-122° 14.747'



Date: 8/12/2018 Time: 9:59:00 PM Author: NorCal

**Hirz Fire**  
 CA-SHF-1223  
 August 13, 2018  
 Day Shift  
 3,883 acres  
**Air Operations**  
 Fire Perimeter as of 8/12 @ 1300 hrs.

- TFR - from 8/12 to 10/12; 8,000 ft. MSL
- Transmission Lines
- Uncontrolled Fire Edge
- Completed Line
- Completed Dozer Line
- Proposed Dozer Line
- Planned Fire Line
- Wildfire Daily Fire Perimeter
- Drop Point
- Repeater
- Helispot
- Division Break

Miles