

- Contingency Div Break
- Contingency Branch Break
- Aerial Hazard
- Camp
- Dip Site
- Drop Point
- Helispot

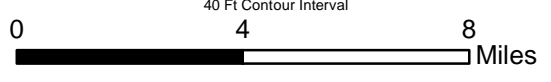
- Mobile Weather Unit
- Repeater
- Sling Site
- Staging Area
- Water Source
- Division Break
- Branch Break

- Closed Roads
- Highways
- Interstate5
- Major Roads
- MVUM\_Roads2014\_Hirz\_20180828\_1716

**IAP MAP INDEX**  
**HIRZ INCIDENT**  
 CA-SHF-001223  
 August 31, 2018  
 34,776 Acres



Nad 83 1:215,169.47  
 40 Ft Contour Interval

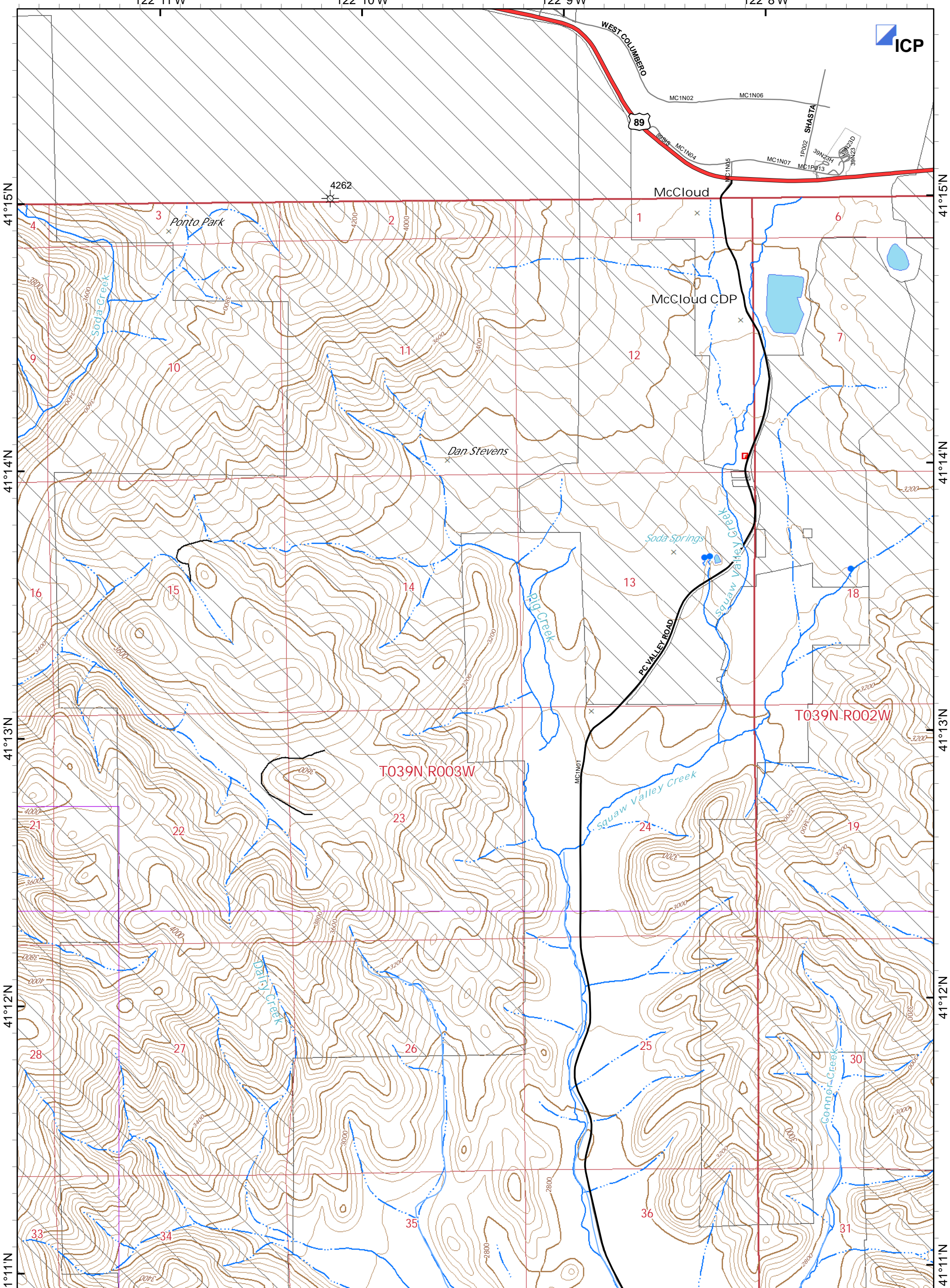


122°11'W

122°10'W

122°9'W

122°8'W



41°15'N  
41°14'N  
41°13'N  
41°12'N  
41°11'N

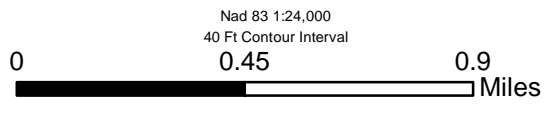
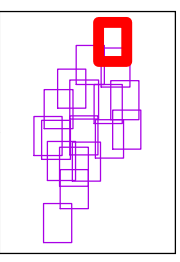
41°15'N  
41°14'N  
41°13'N  
41°12'N  
41°11'N

Incident Command Post

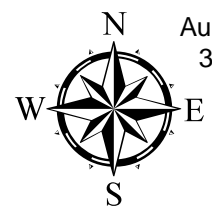
Private Timber Lands  
USDA Forest Service

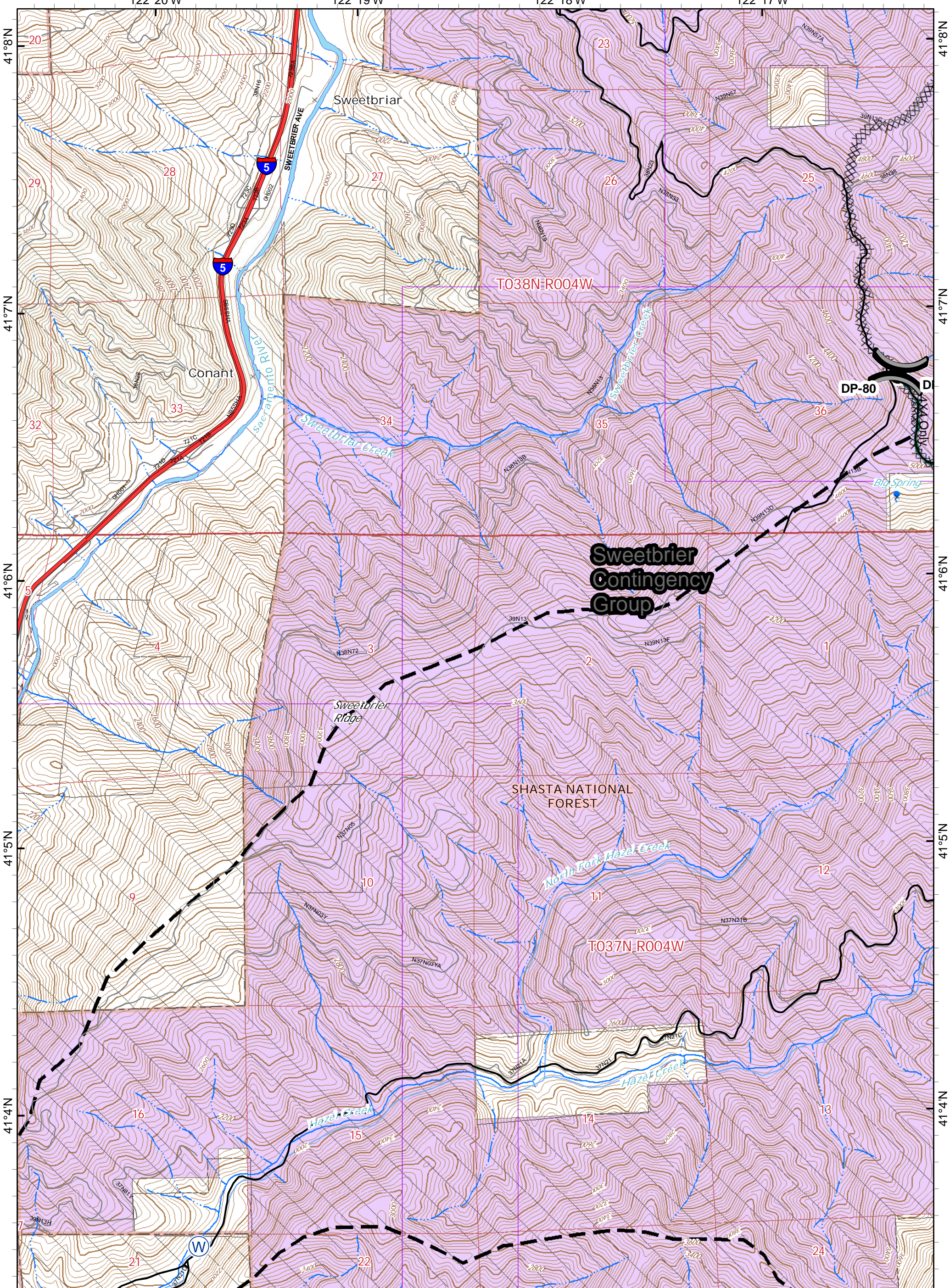
### IAP MAP PAGE A4

**HIRZ INCIDENT**  
CA-SHF-001223  
August 31, 2018  
34,776 Acres



Nad 83 1:24,000  
40 Ft Contour Interval



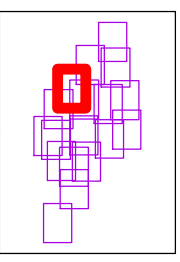
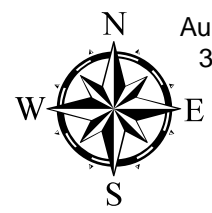
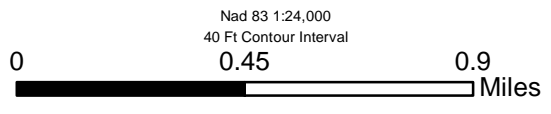


- Wildfire Daily Fire Perimeter
- Helispot
- Uncontrolled Fire Edge
- Active Burnout
- Contingency Div Break
- Division Break
- Completed Dozer Line
- Drop Point
- Planned Fire Line
- Wildfire Daily Fire Perimeter

- Private Timber Lands
- USDA Forest Service
- Non-Forest Service

## IAP MAP PAGE B2

**HIRZ INCIDENT**  
 CA-SHF-001223  
 August 31, 2018  
 34,776 Acres



122°16'W

122°15'W

122°14'W

122°13'W

41°11'N

41°10'N

41°9'N

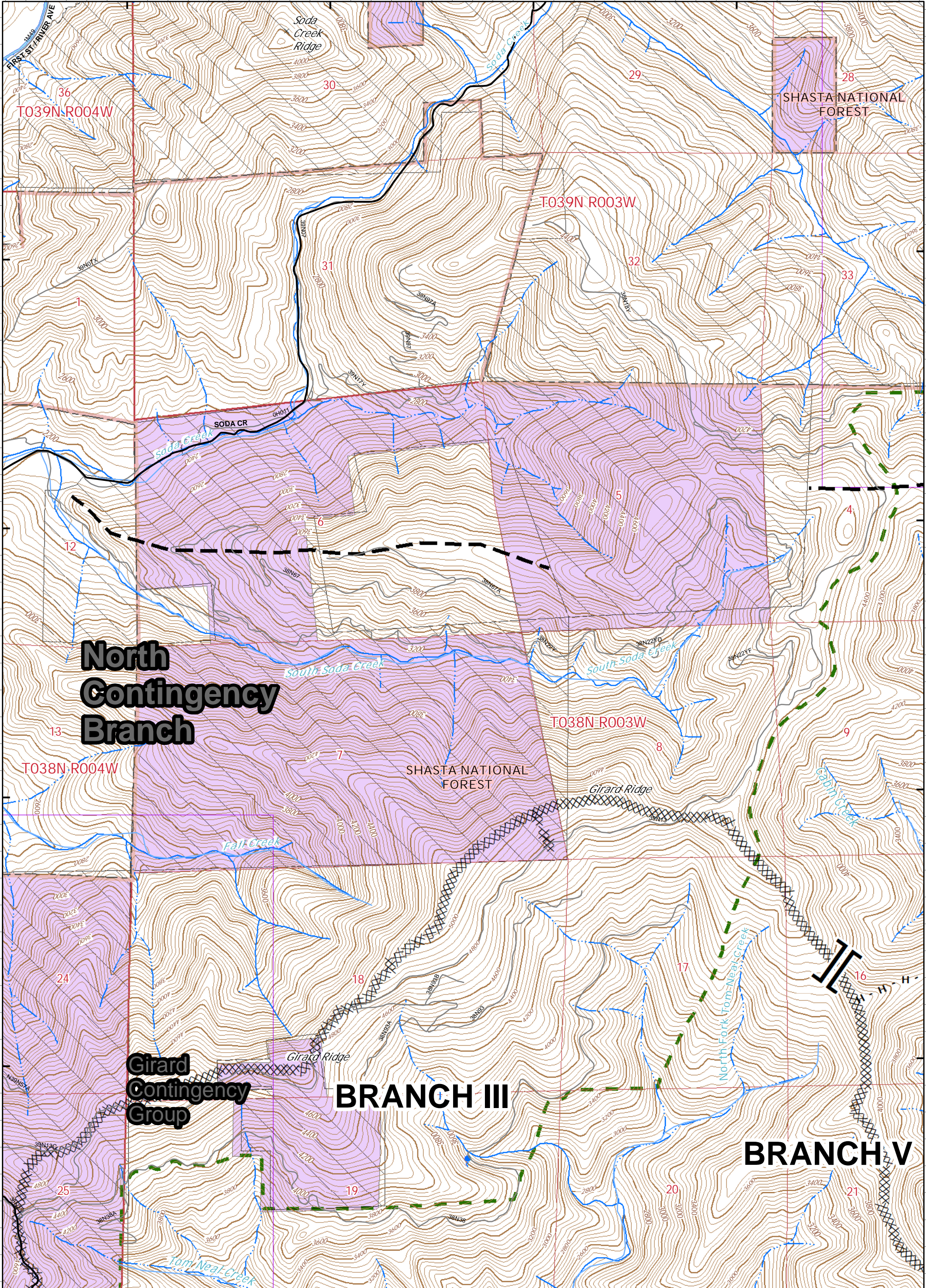
41°8'N

41°11'N

41°10'N

41°9'N

41°8'N


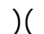

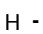

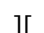







**North  
Contingency  
Branch**

**Girard  
Contingency  
Group**

**BRANCH III**

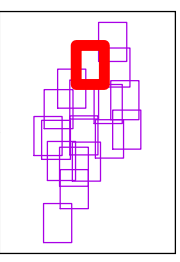
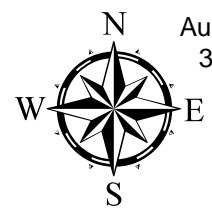
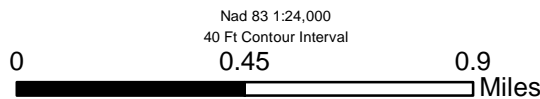
**BRANCH V**

-  Contingency Div Break
-  Division Break
-  Completed Dozer Line
-  Completed Hand Line
-  Drop Point
-  Branch Break
-  Planned Fire Line

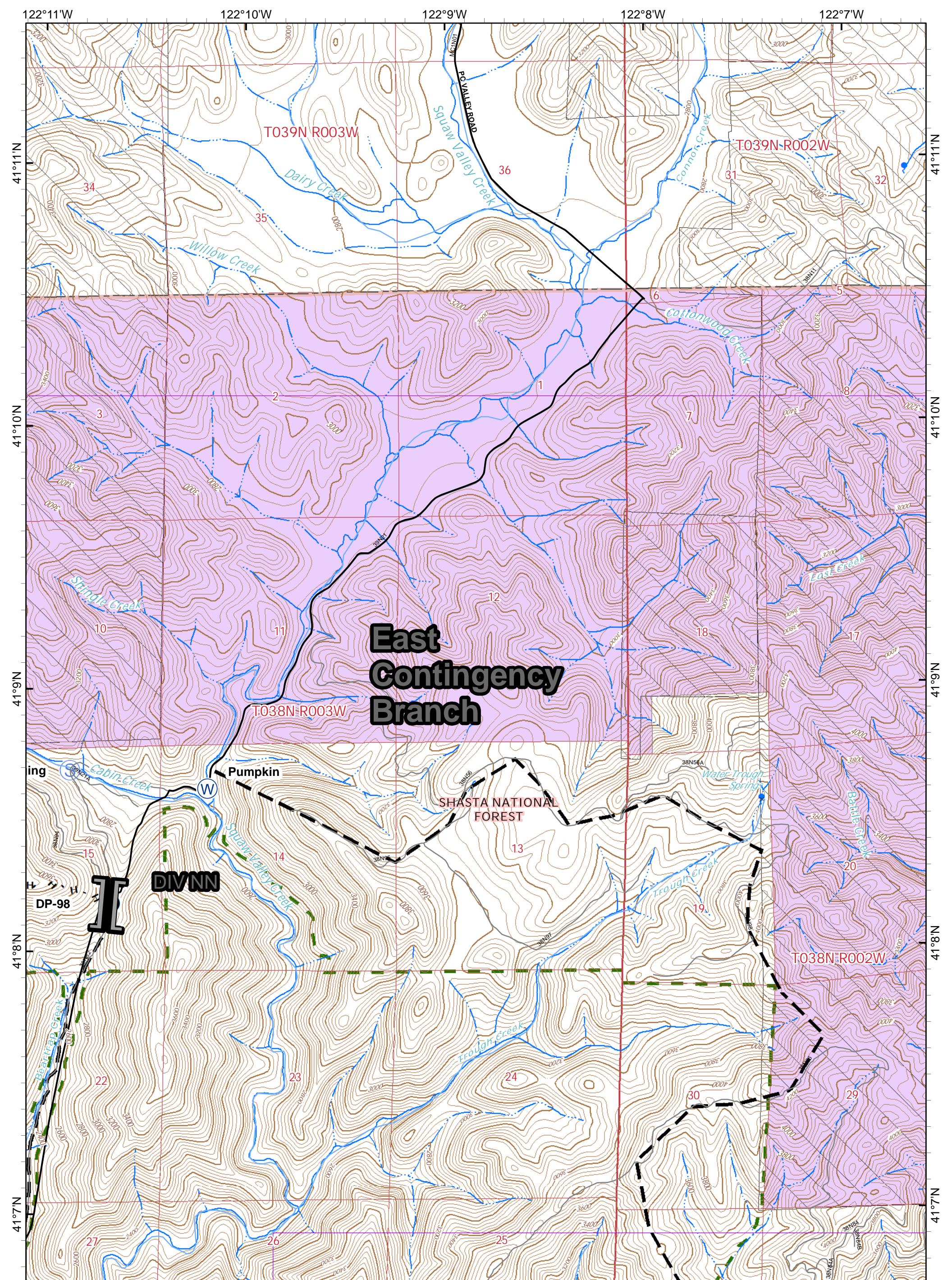
-  Private Timber Lands
-  Inventoried Roadless Area
-  USDA Forest Service
-  Non-Forest Service

**IAP MAP PAGE B3**

**HIRZ INCIDENT**  
CA-SHF-001223  
August 31, 2018  
34,776 Acres



Nad 83 1:24,000  
40 Ft Contour Interval



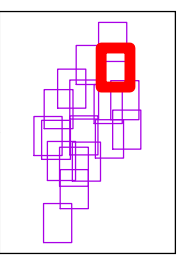
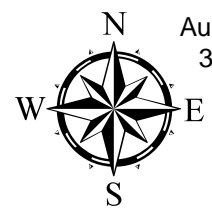
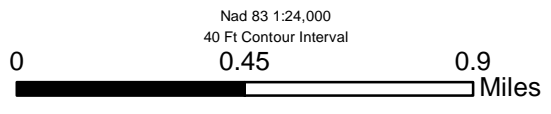
# East Contingency Branch

- Contingency Branch Break
- Staging Area
- Completed Dozer Line
- Completed Hand Line
- Drop Point
- Branch Break
- Planned Fire Line

- Private Timber Lands
- Inventoried Roadless Area
- USDA Forest Service
- Non-Forest Service

## IAP MAP PAGE B4

**HIRZ INCIDENT**  
 CA-SHF-001223  
 August 31, 2018  
 34,776 Acres



122°23'W

122°22'W

122°21'W

122°20'W

41°4'N

41°3'N

41°2'N

41°1'N

41°0'N

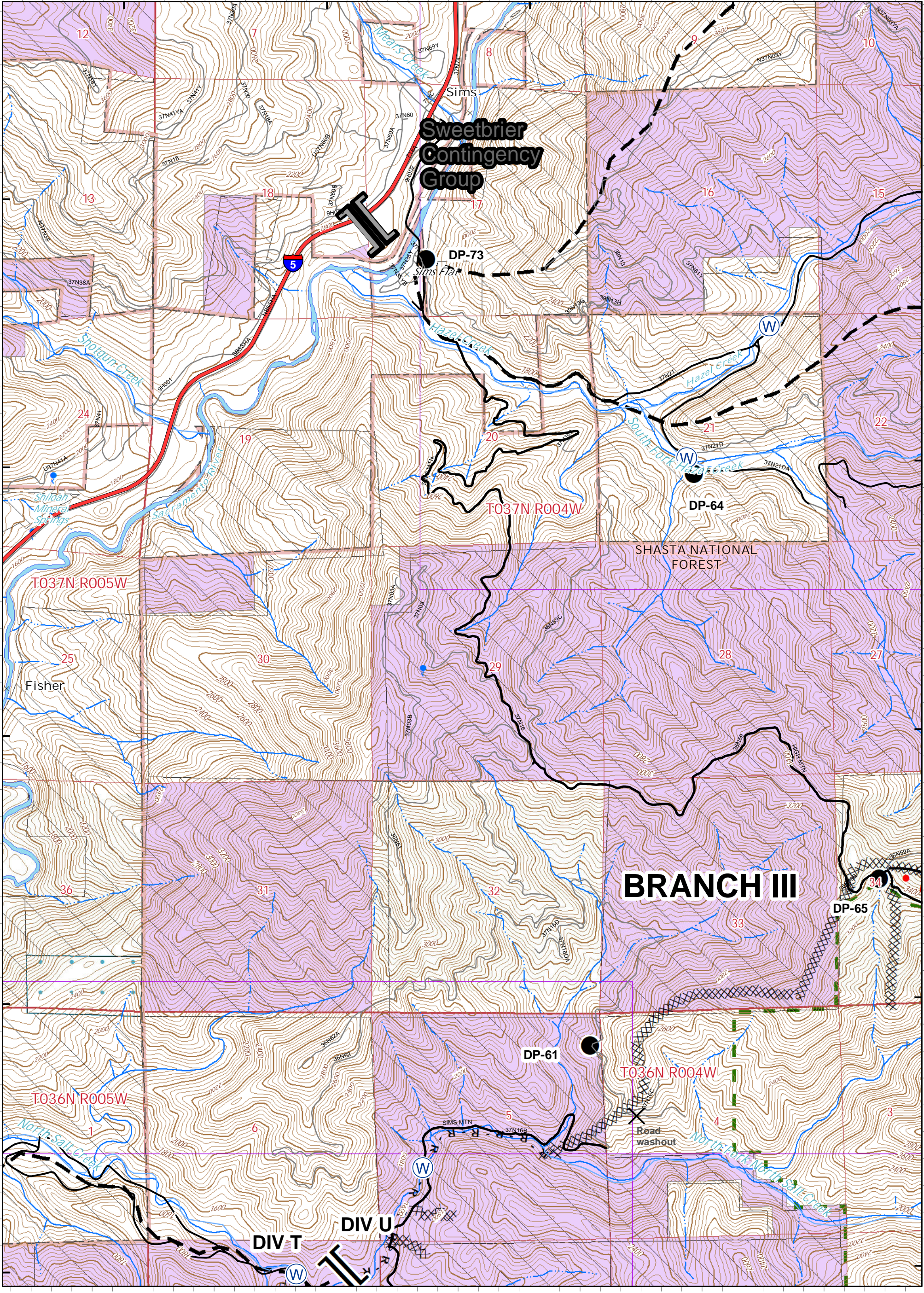
41°4'N

41°3'N

41°2'N

41°1'N

41°0'N

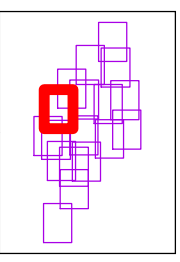
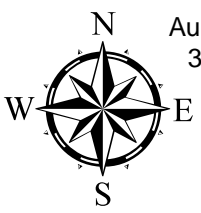
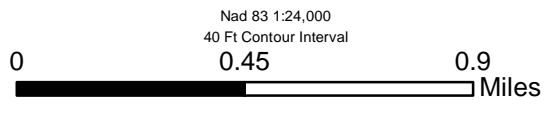


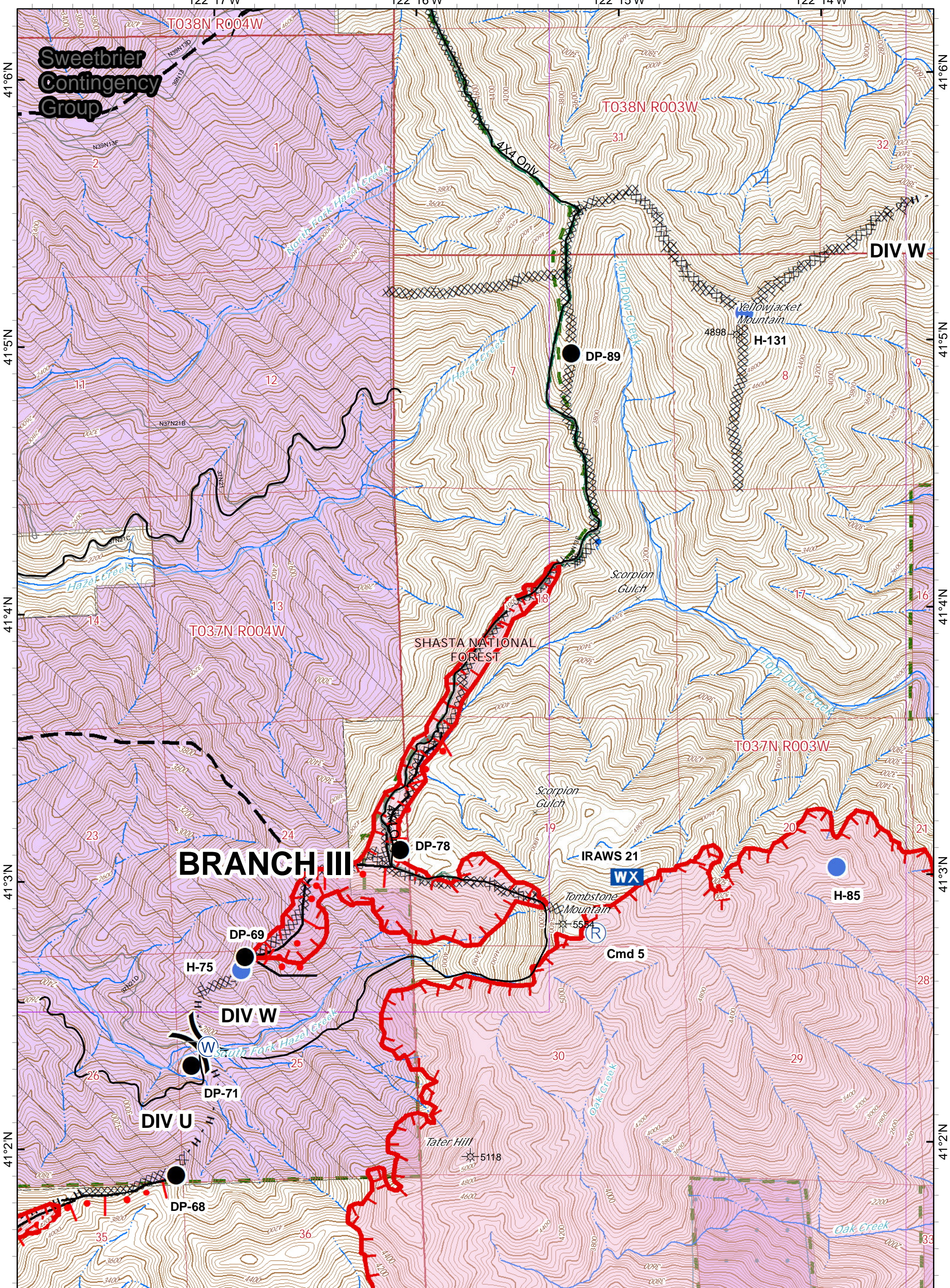
- Wildfire Daily Fire Perimeter
- Contingency Branch Break
- Drop Point
- Branch Break
- Uncontrolled Fire Edge
- Active Burnout
- Completed Dozer Line
- Planned Fire Line
- Wildfire Daily Fire Perimeter
- Road as Completed Line

- Private Timber Lands
- Inventoried Roadless Area
- State Lands
- USDA Forest Service
- Non-Forest Service

### IAP MAP PAGE C2

**HIRZ INCIDENT**  
 CA-SHF-001223  
 August 31, 2018  
 34,776 Acres





**Sweetbrier Contingency Group**

**BRANCH III**

SHASTA NATIONAL FOREST

**IAP MAP PAGE C3**

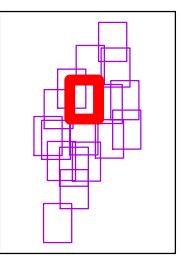
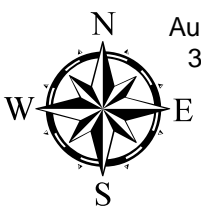
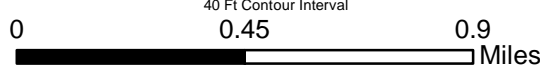
**HIRZ INCIDENT**

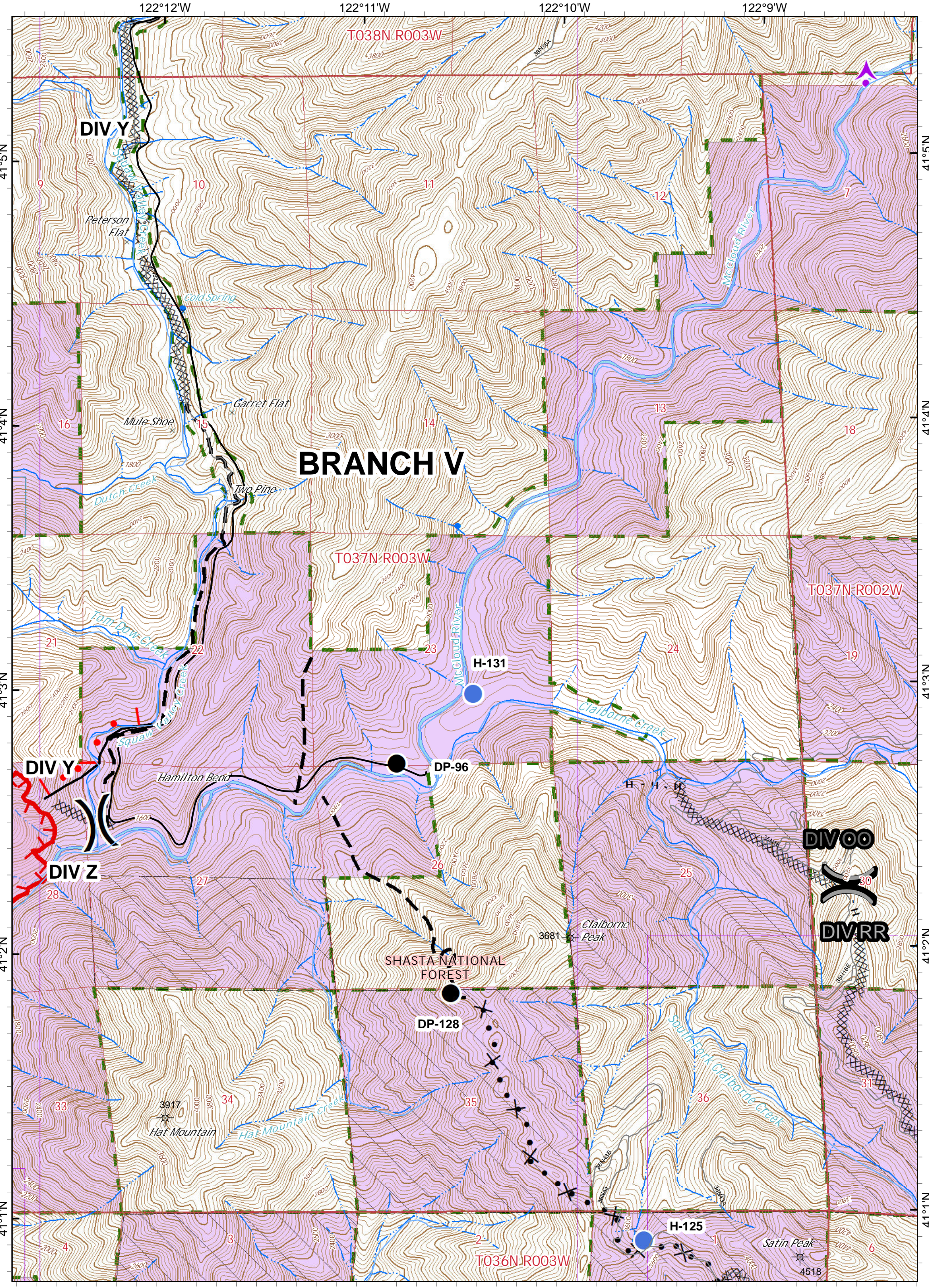
CA-SHF-001223  
August 31, 2018  
34,776 Acres

- Wildfire Daily Fire Perimeter
- Contingency Div Break
- Drop Point
- Hellsport
- Mobile Weather Unit
- Repeater
- Division Break
- Uncontrolled Fire Edge
- Active Burnout
- Completed Dozer Line
- Completed Hand Line
- Wildfire Daily Fire Perimeter

- Private Timber Lands
- Inventoried Roadless Area
- State Lands
- USDA Forest Service
- Non-Forest Service

Nad 83 1:24,000  
40 Ft Contour Interval





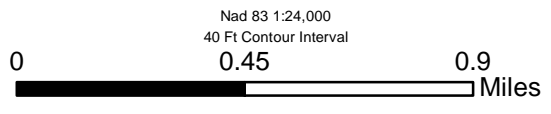
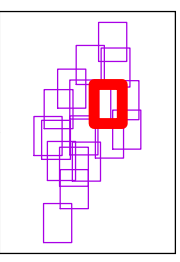
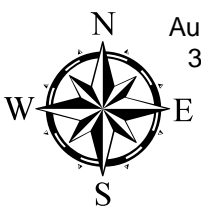
# BRANCH V

- Wildfire Daily Fire Perimeter
- Drop Point
- Uncontrolled Fire Edge
- Active Burnout
- Contingency Div Break
- Helispot
- Completed Dozer Line
- Planned Fire Line
- Aerial Hazard
- Division Break
- Completed Hand Line
- Proposed Dozer Line
- Wildfire Daily Fire Perimeter

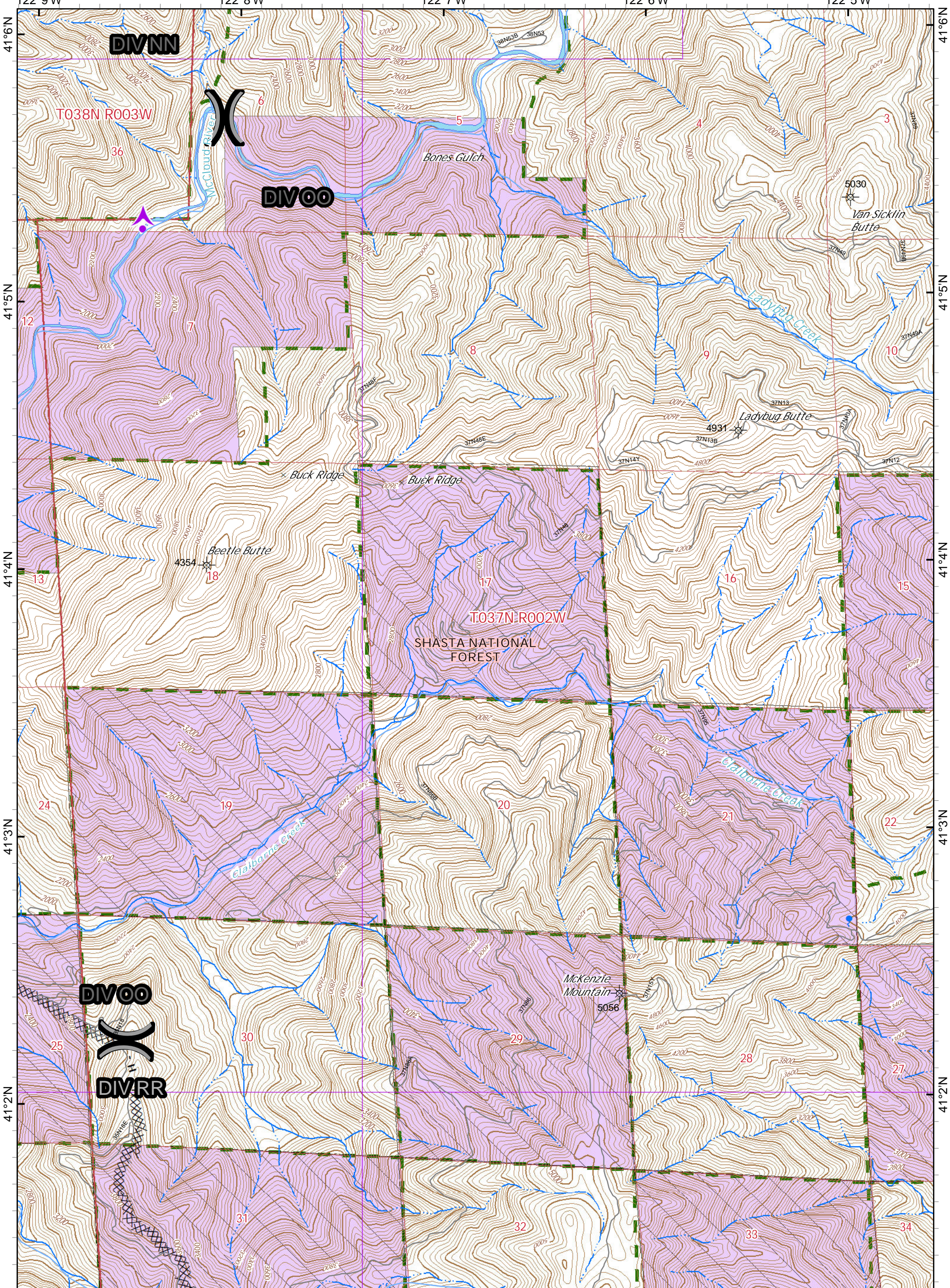
- Private Timber Lands
- Inventoried Roadless Area
- State Lands
- USDA Forest Service
- Non-Forest Service


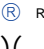

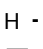

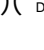


## IAP MAP PAGE C4




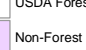
**HIRZ INCIDENT**  
 CA-SHF-001223  
 August 31, 2018  
 34,776 Acres





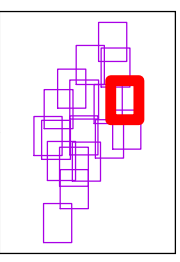
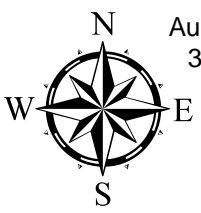
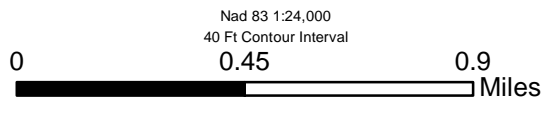


-  Contingency Div Break
-  Repeater
-  Completed Dozer Line
-  Completed Hand Line
-  Aerial Hazard
-  Division Break
-  Planned Fire Line
-  Drop Point

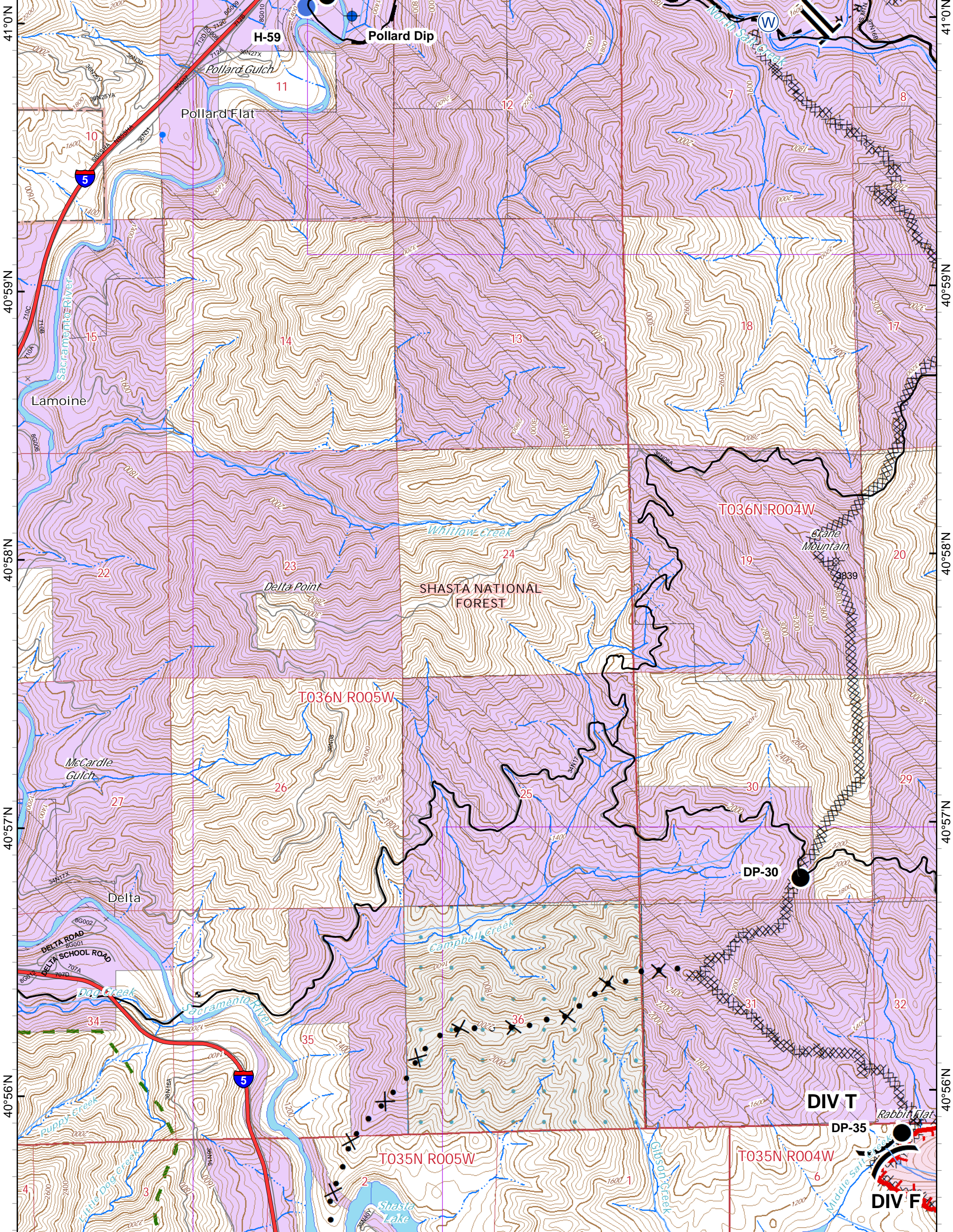
-  Private Timber Lands
-  Inventoried Roadless Area
-  USDA Forest Service
-  Non-Forest Service

## IAP MAP PAGE C5

**HIRZ INCIDENT**  
 CA-SHF-001223  
 August 31, 2018  
 34,776 Acres



122°25'W 122°24'W 122°23'W 122°22'W



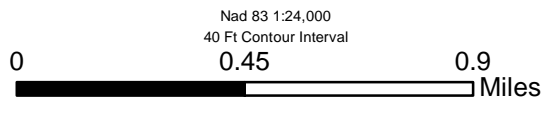
- Wildfire Daily Fire Perimeter
- Dip Site
- Drop Point
- Helispot
- Division Break
- Branch Break
- Completed Dozer Line
- Proposed Dozer Line
- Planned Fire Line
- Wildfire Daily Fire Perimeter
- R - Road as Completed Line

- Private Timber Lands
- Inventoried Roadless Area
- Slate Lands
- USDA Forest Service
- Non-Forest Service

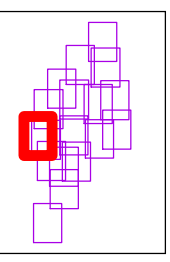
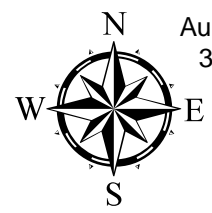
# IAP MAP PAGE D1

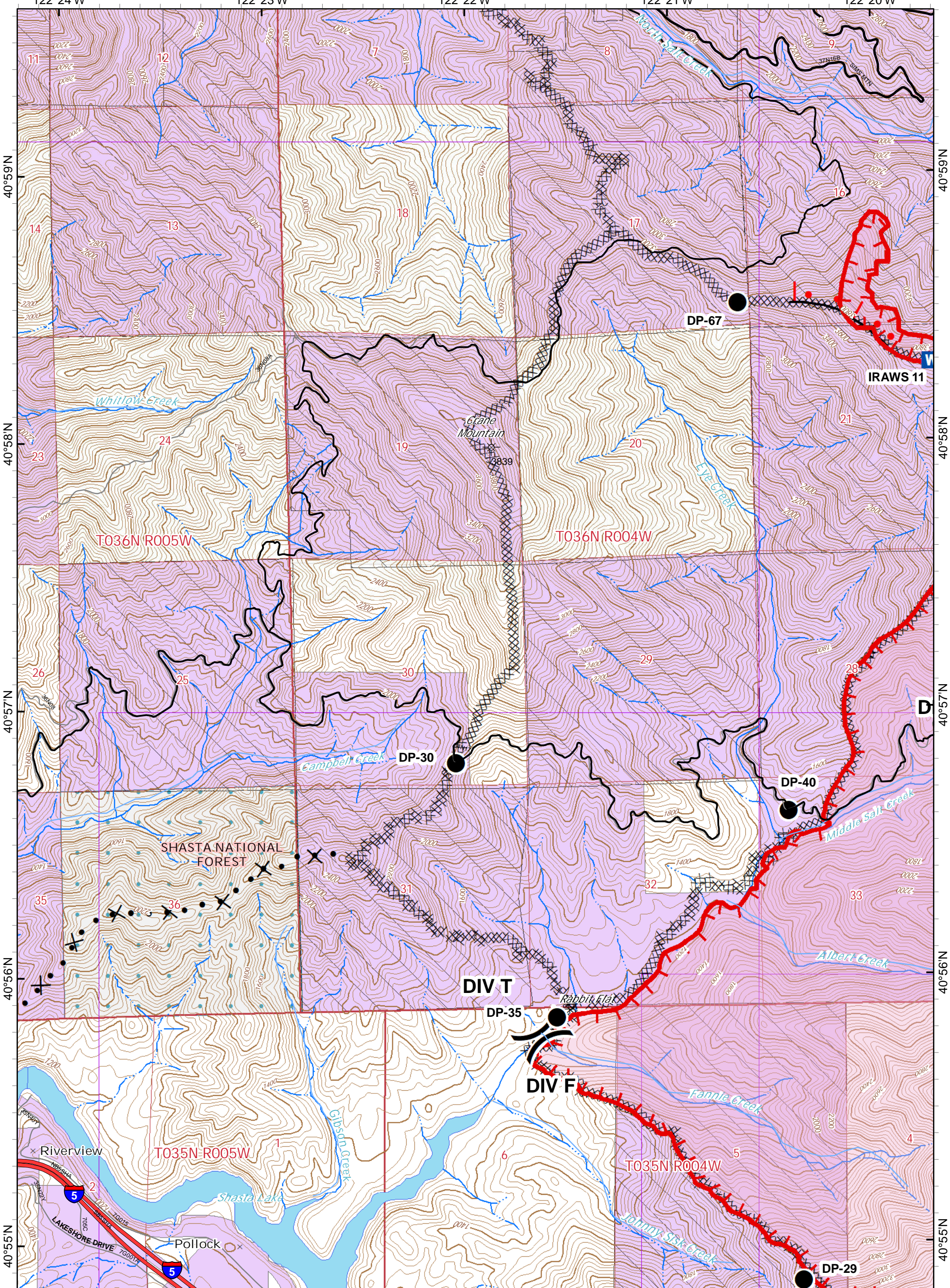
## HIRZ INCIDENT

CA-SHF-001223  
August 31, 2018  
34,776 Acres



Nad 83 1:24,000  
40 Ft Contour Interval



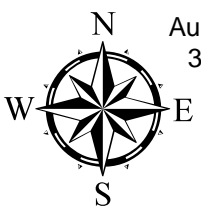
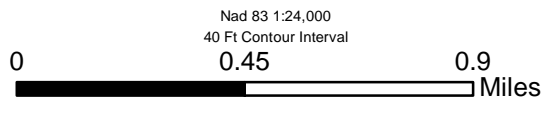
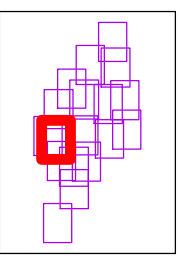


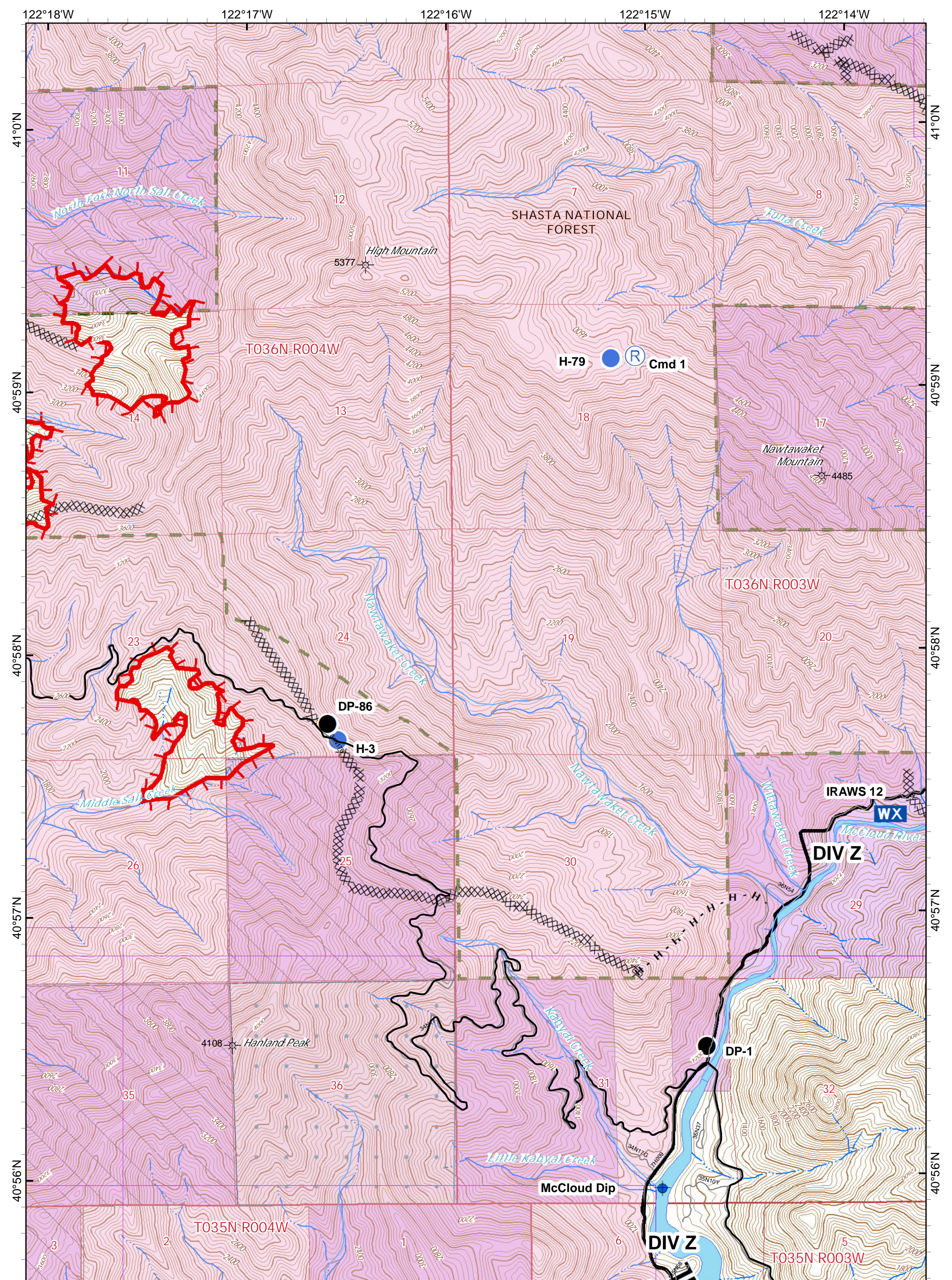
- Wildfire Daily Fire Perimeter
- Dip Site
- Drop Point
- Helispot
- Mobile Weather Unit
- Sling Site
- Division Break
- Completed Hand Line
- Road as Completed Line
- Uncontrolled Fire Edge
- Active Burnout
- Completed Dozer Line
- Proposed Dozer Line
- Planned Fire Line
- Wildfire Daily Fire Perimeter

- Private Timber Lands
- State Lands
- USDA Forest Service
- Non-Forest Service

## IAP MAP PAGE D2

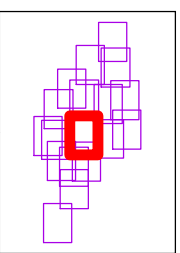
**HIRZ INCIDENT**  
 CA-SHF-001223  
 August 31, 2018  
 34,776 Acres





# IAP MAP PAGE D3

**HIRZ INCIDENT**  
 CA-SHF-001223  
 August 31, 2018  
 34,776 Acres



Nad 83 1:24,000  
 40 Ft Contour Interval  
 0 0.45 0.9 Miles

122°12'W

122°11'W

122°10'W

122°9'W

40°59'N

40°59'N

40°58'N

40°58'N

40°57'N

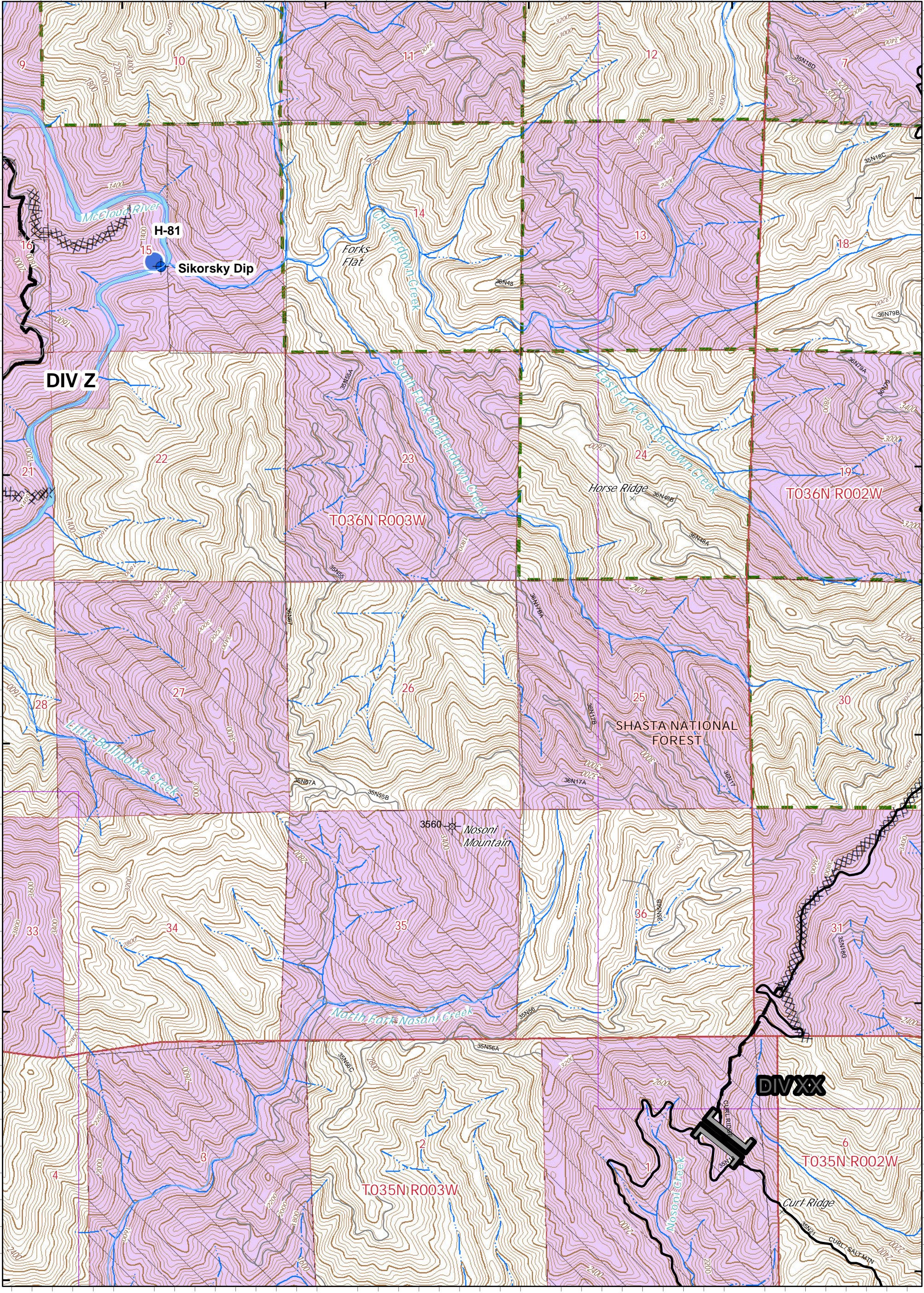
40°57'N

40°56'N

40°56'N

40°55'N

40°55'N

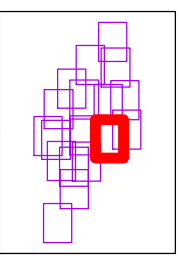
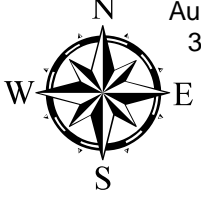
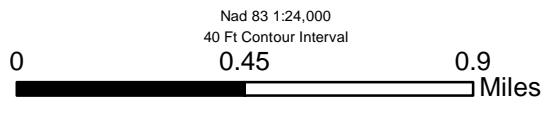


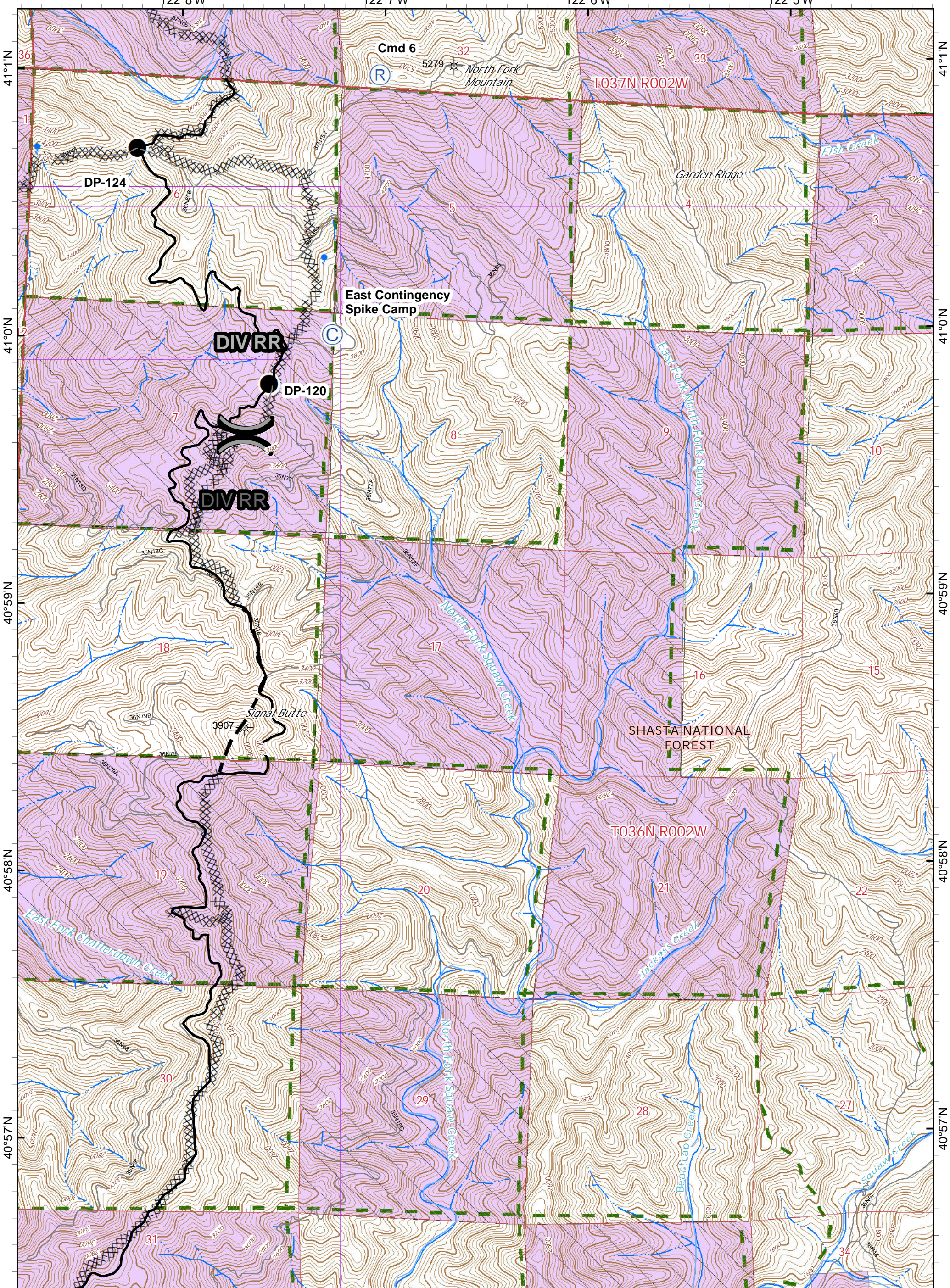
- Wildfire Daily Fire Perimeter
- Helispot
- Completed Line
- Completed Dozer Line
- Planned Fire Line
- Wildfire Daily Fire Perimeter
- Contingency Branch Break
- Branch Break
- Dip Site

- Private Timber Lands
- Inventoried Roadless Area
- USDA Forest Service
- Non-Forest Service

### IAP MAP PAGE D4

**HIRZ INCIDENT**  
 CA-SHF-001223  
 August 31, 2018  
 34,776 Acres

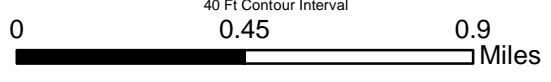




- Contingency Div Break
- Repeater
- Completed Dozer Line
- Planned Fire Line
- Camp
- Division Break
- Drop Point

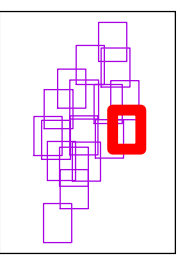
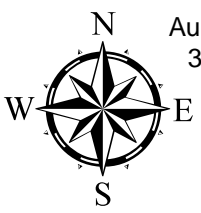
- Private Timber Lands
- Inventoried Roadless Area
- USDA Forest Service
- Non-Forest Service

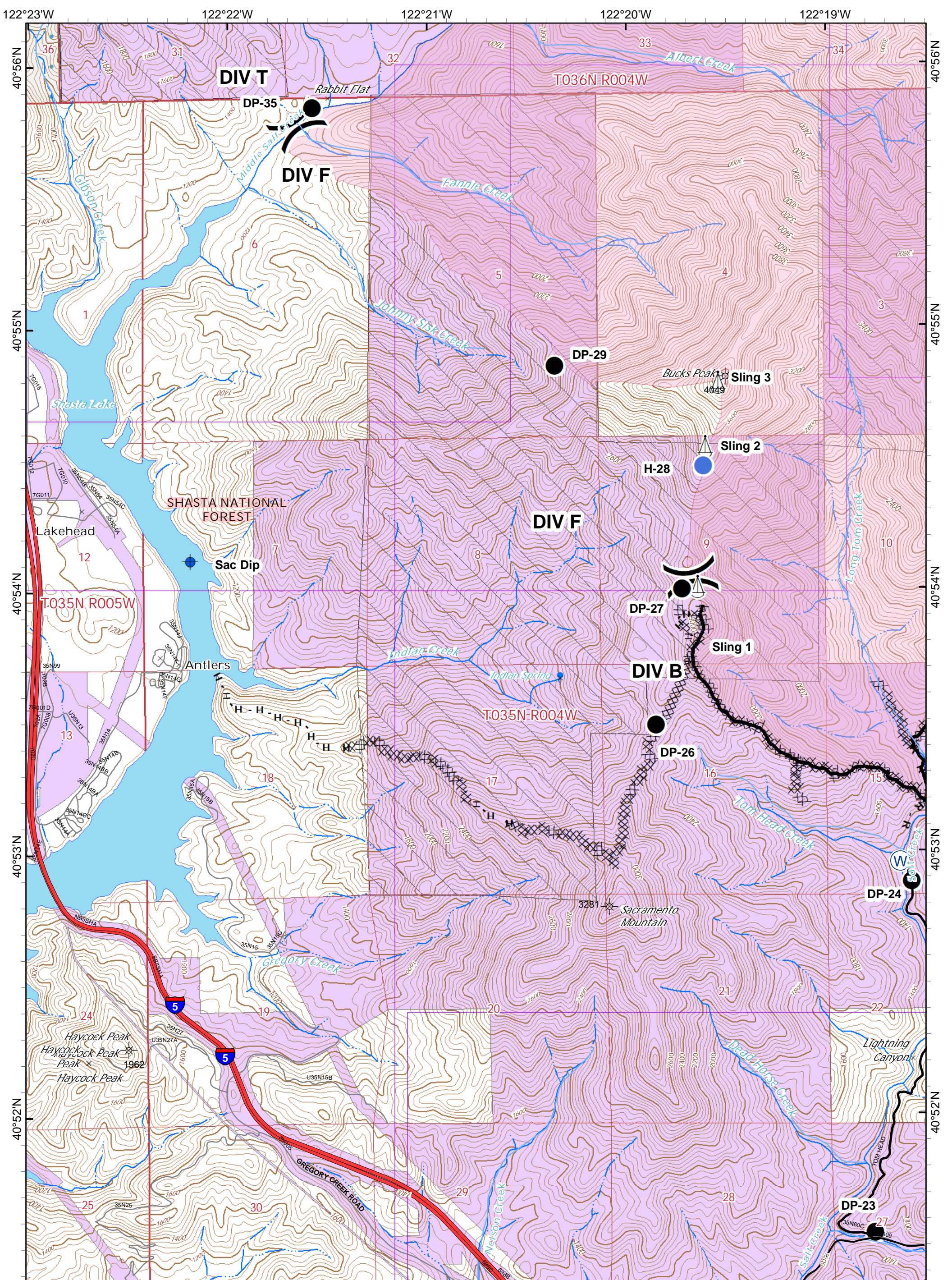
Nad 83 1:24,000  
40 Ft Contour Interval



# IAP MAP PAGE D5

**HIRZ INCIDENT**  
CA-SHF-001223  
August 31, 2018  
34,776 Acres

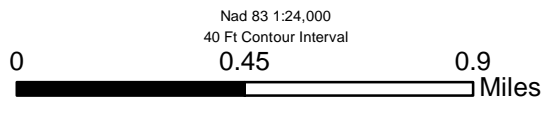
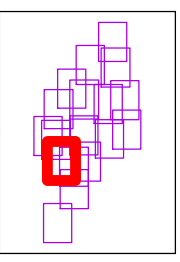
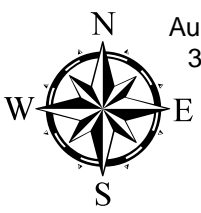


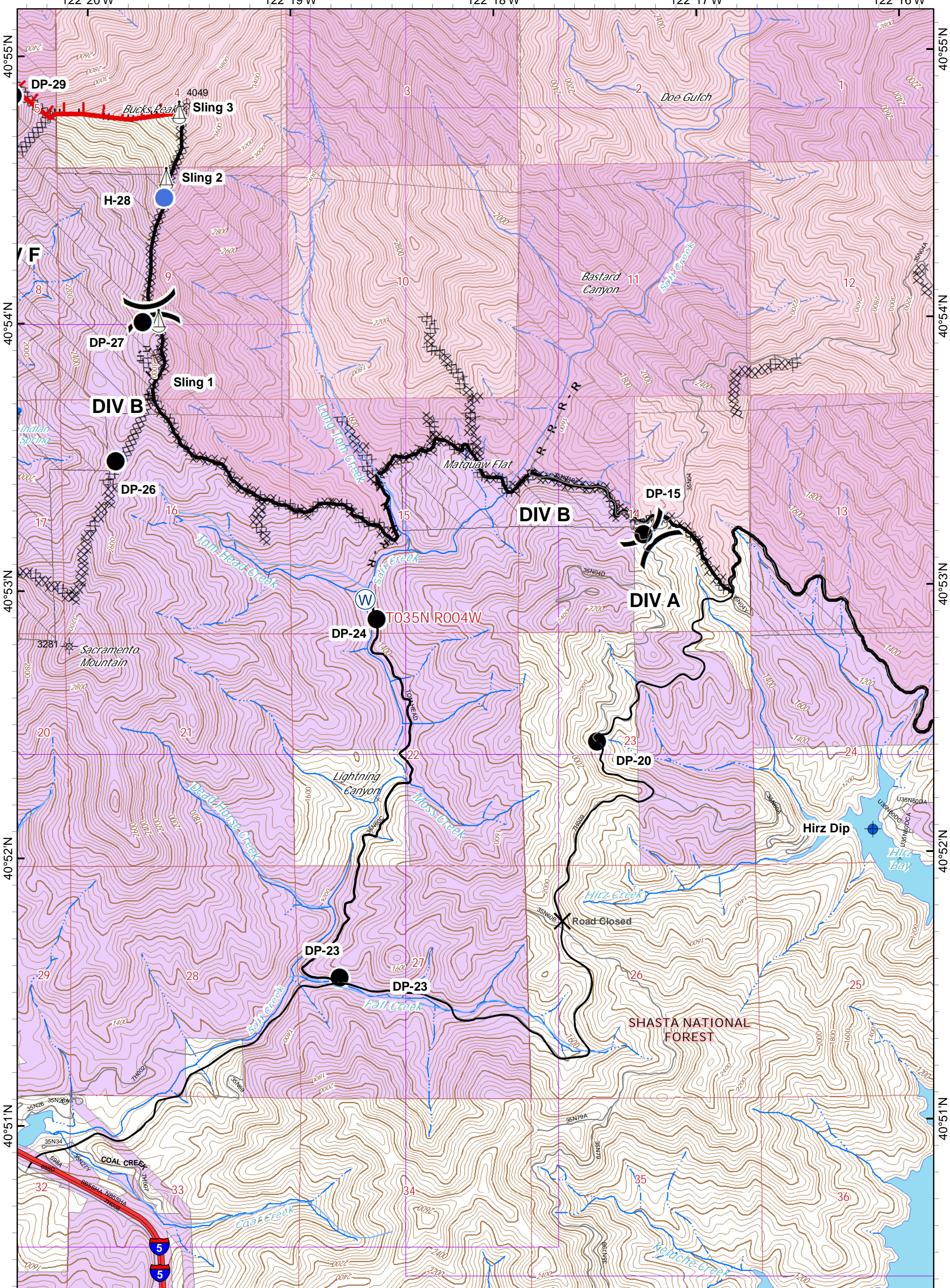


- Wildfire Daily Fire Perimeter
- Dip Site
- Drop Point
- Helispot
- Sling Site
- Uncontrolled Fire Edge
- Completed Line
- Completed Dozer Line
- Completed Hand Line
- Proposed Dozer Line
- Road as Completed Line
- Planned Fire Line
- Wildfire Daily Fire Perimeter
- Division Break
- Private Timber Lands
- State Lands
- USDA Forest Service
- Non-Forest Service

# IAP MAP PAGE E2

**HIRZ INCIDENT**  
 CA-SHF-001223  
 August 31, 2018  
 34,776 Acres

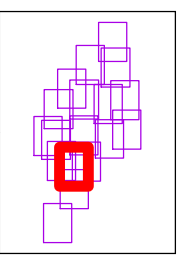
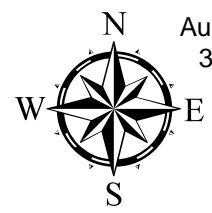
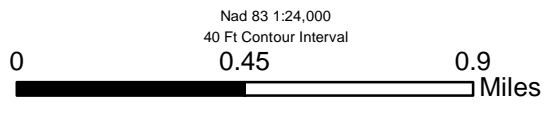




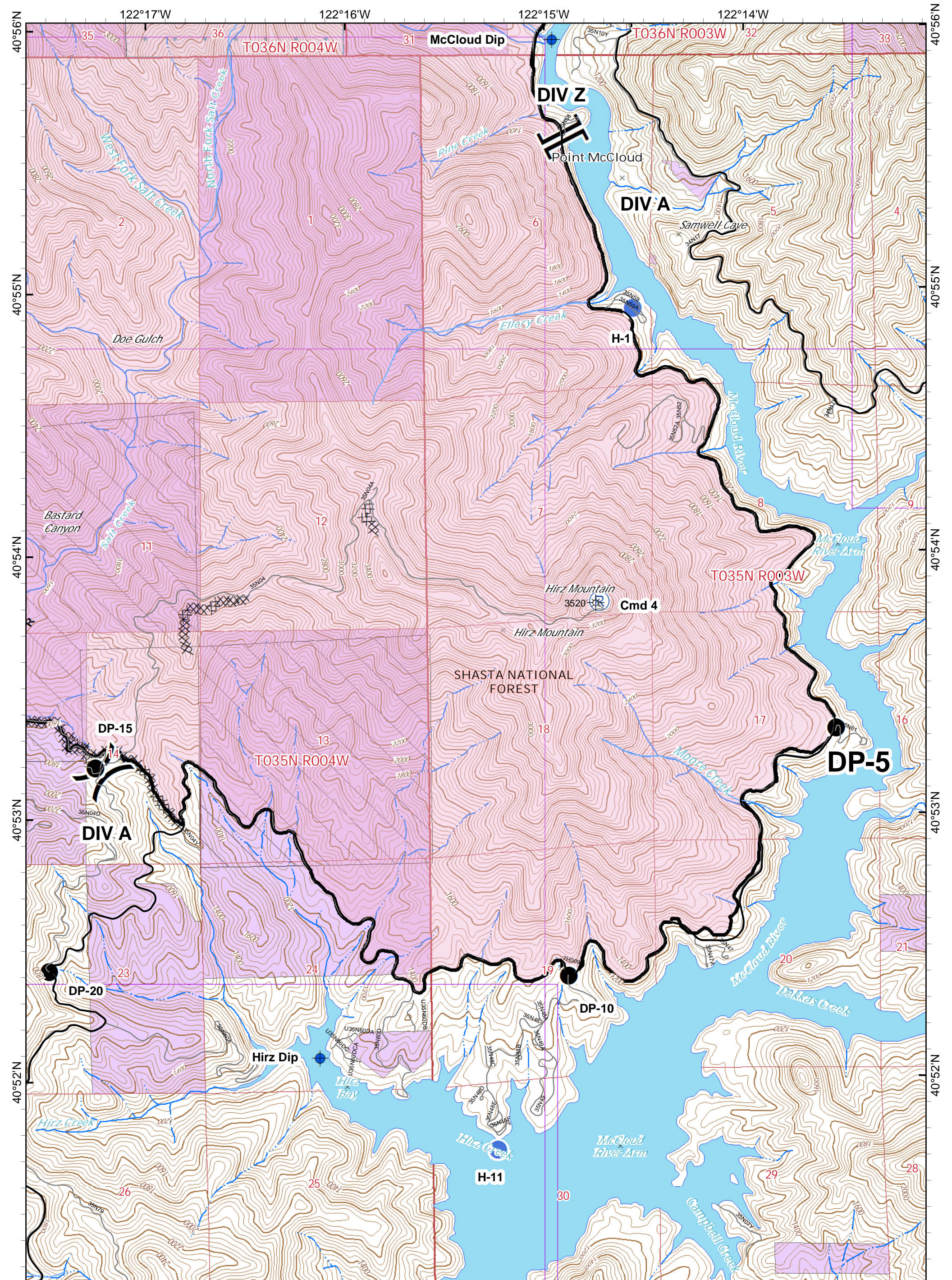
- Wildfire Daily Fire Perimeter
- Helispot
- Uncontrolled Fire Edge
- Completed Hand Line
- Private Timber Lands
- X Closure
- Dip Site
- Completed Line
- USDA Forest Service
- Sling Site
- Road as Completed Line
- Non-Forest Service
- Division Break
- Completed Dozer Line
- Wildfire Daily Fire Perimeter

# IAP MAP PAGE E3

**HIRZ INCIDENT**  
 CA-SHF-001223  
 August 31, 2018  
 34,776 Acres





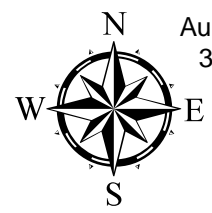
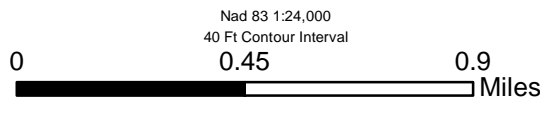
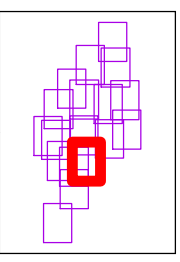


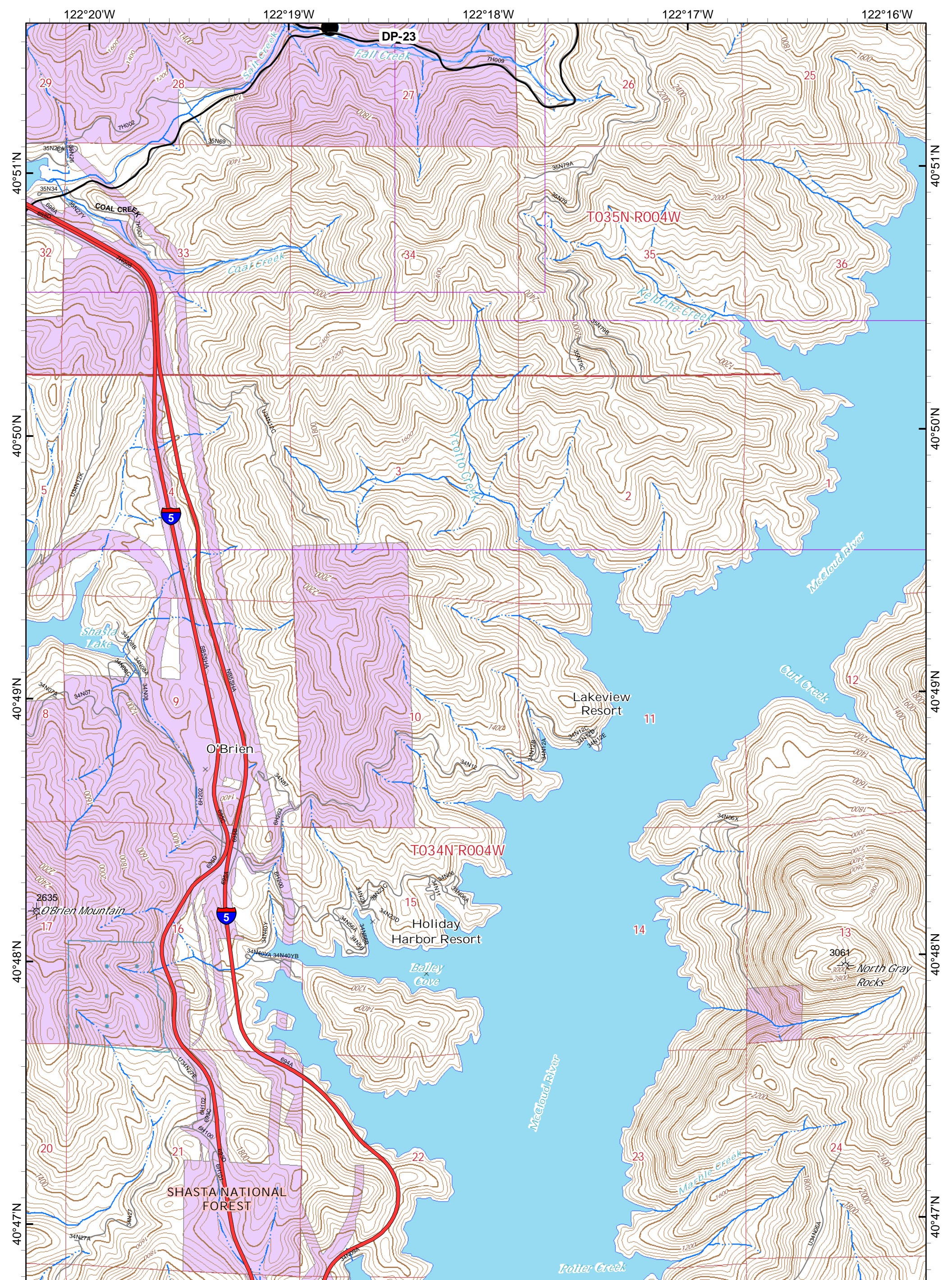
- Wildfire Daily Fire Perimeter
- Closure
- Dip Site
- Drop Point
- Hellsite
- Repeater
- Division Break
- Branch Break
- Completed Dozer Line
- Road as Completed Line
- Wildfire Daily Fire Perimeter

- Private Timber Lands
- State Lands
- USDA Forest Service
- Non-Forest Service




## IAP MAP PAGE E4

**HIRZ INCIDENT**  
 CA-SHF-001223  
 August 31, 2018  
 34,776 Acres



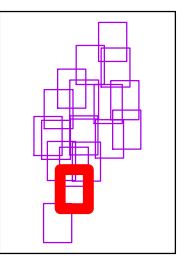
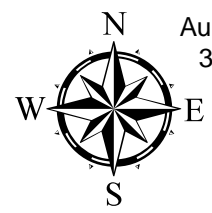
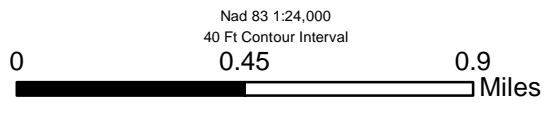


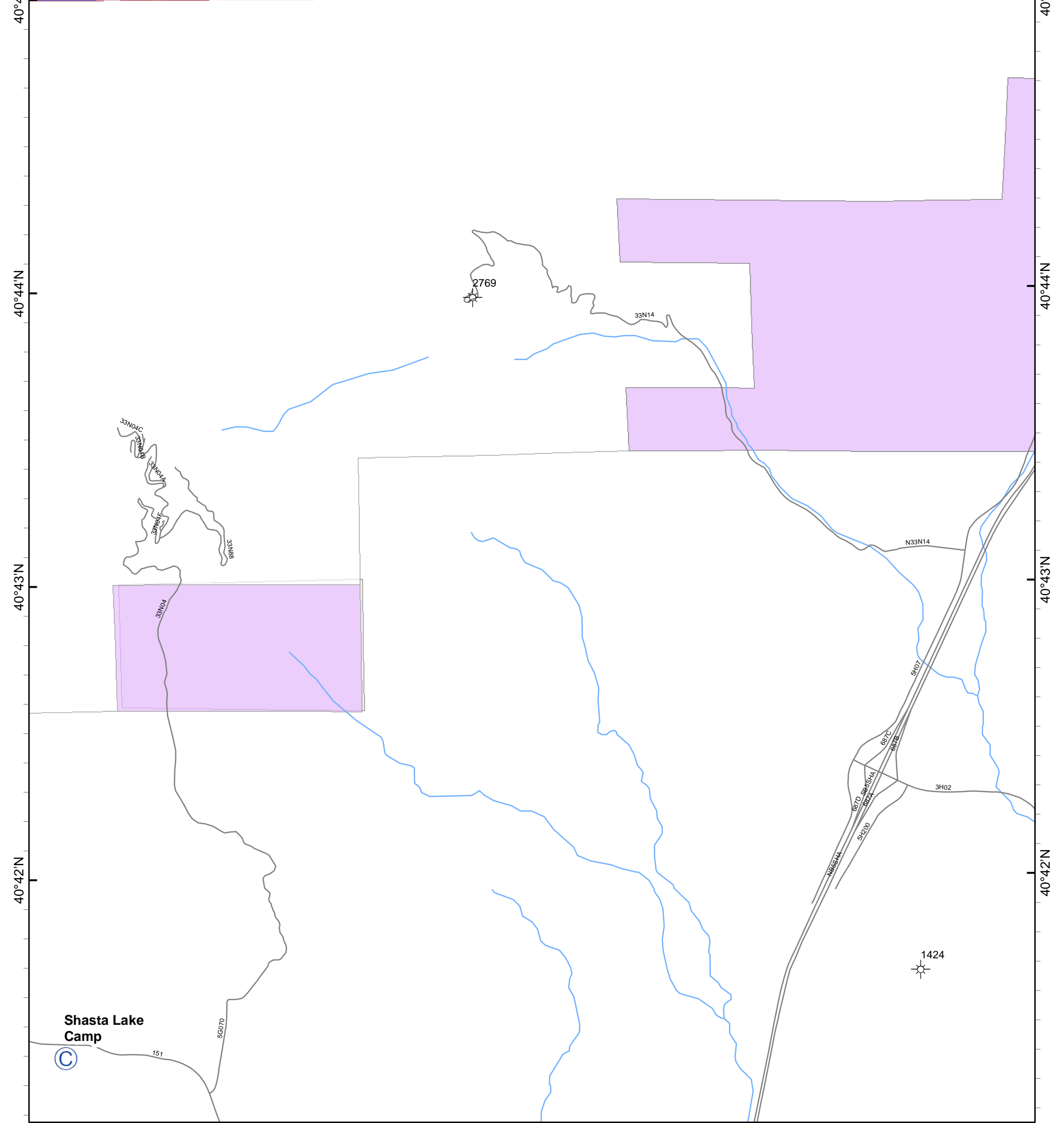
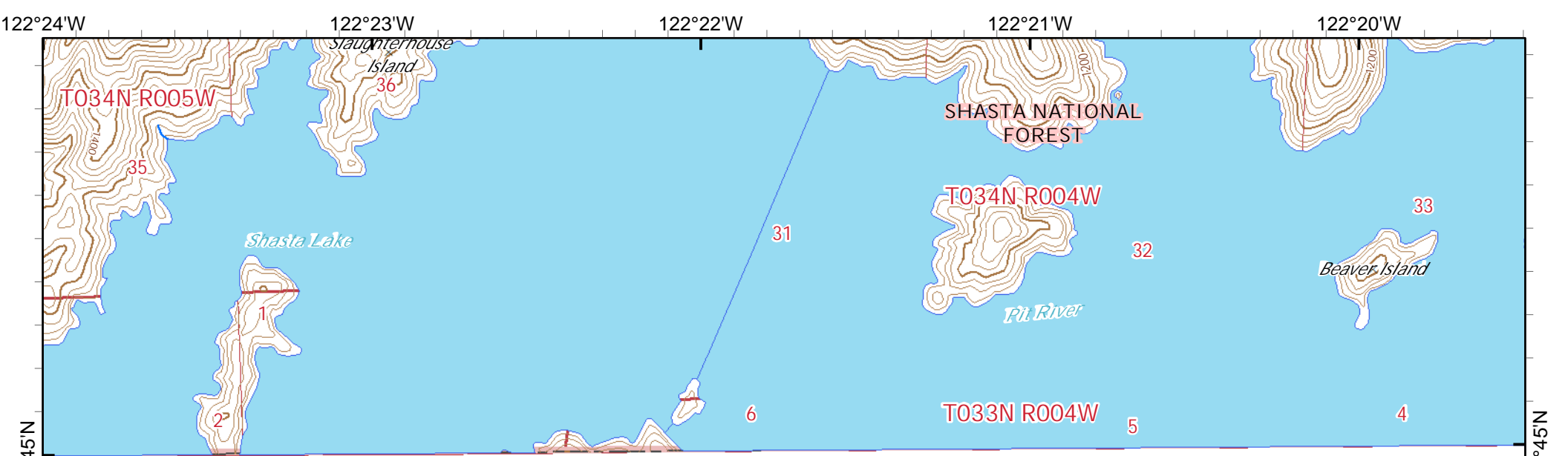
X Closure    ● Drop Point  
 ● Dip Site

 State Lands  
 USDA Forest Service  
 Non-Forest Service

# IAP MAP PAGE F3

**HIRZ INCIDENT**  
 CA-SHF-001223  
 August 31, 2018  
 34,776 Acres





© Camp

USDA Forest Service  
 Non-Forest Service

### IAP MAP PAGE G2

**HIRZ INCIDENT**  
 CA-SHF-001223  
 August 31, 2018  
 34,776 Acres

