

122°28'W 122°26'W 122°24'W 122°22'W 122°20'W 122°18'W 122°16'W 122°14'W 122°12'W 122°10'W 122°9'W 122°8'W 122°7'W 122°6'W 122°5'W 122°4'W 122°3'W 122°2'W 122°1'W 122°0'W

41°14'N 41°13'N 41°12'N 41°11'N 41°10'N 41°9'N 41°8'N 41°7'N 41°6'N 41°5'N 41°4'N 41°3'N 41°2'N 41°1'N 41°0'N 40°59'N 40°58'N 40°57'N 40°56'N 40°55'N 40°54'N 40°53'N 40°52'N 40°51'N 40°50'N 40°49'N 40°48'N 40°47'N 40°46'N



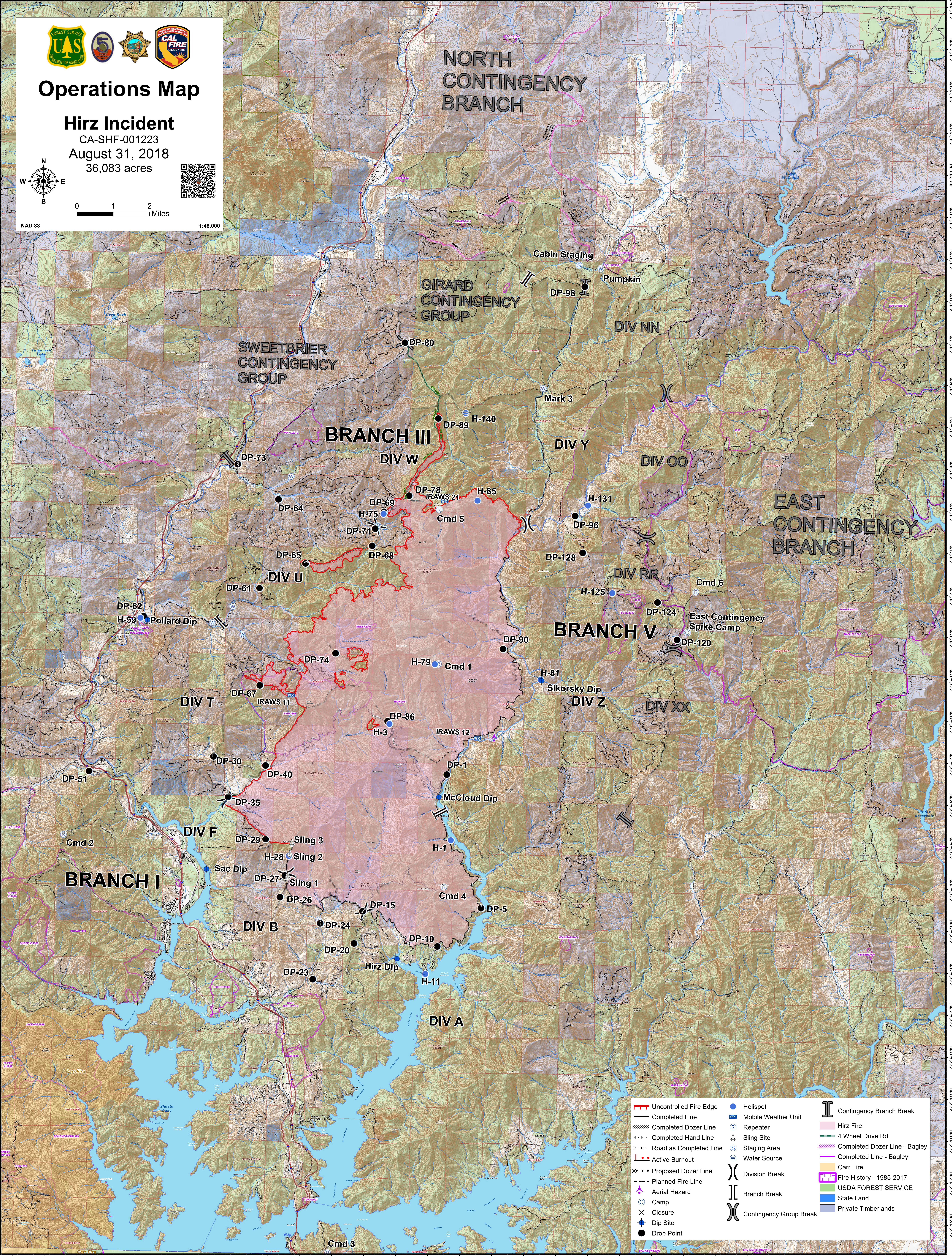
## Operations Map

### Hirz Incident

CA-SHF-001223  
August 31, 2018  
36,083 acres



NAD 83 1:48,000



Uncontrolled Fire Edge	Helispot	Contingency Branch Break
Completed Line	Mobile Weather Unit	Hirz Fire
Completed Dozer Line	Repeater	4 Wheel Drive Rd
Completed Hand Line	Sling Site	Completed Dozer Line - Bagley
Road as Completed Line	Staging Area	Completed Line - Bagley
Active Burnout	Water Source	Carr Fire
Proposed Dozer Line	Division Break	Fire History - 1985-2017
Planned Fire Line	Camp	USDA FOREST SERVICE
Aerial Hazard	Closure	State Land
Dip Site	Contingency Group Break	Private Timberlands
Drop Point		