



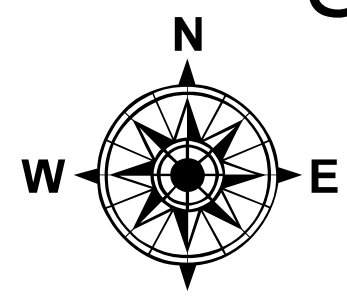
## Branch I Map

### Hirz Incident

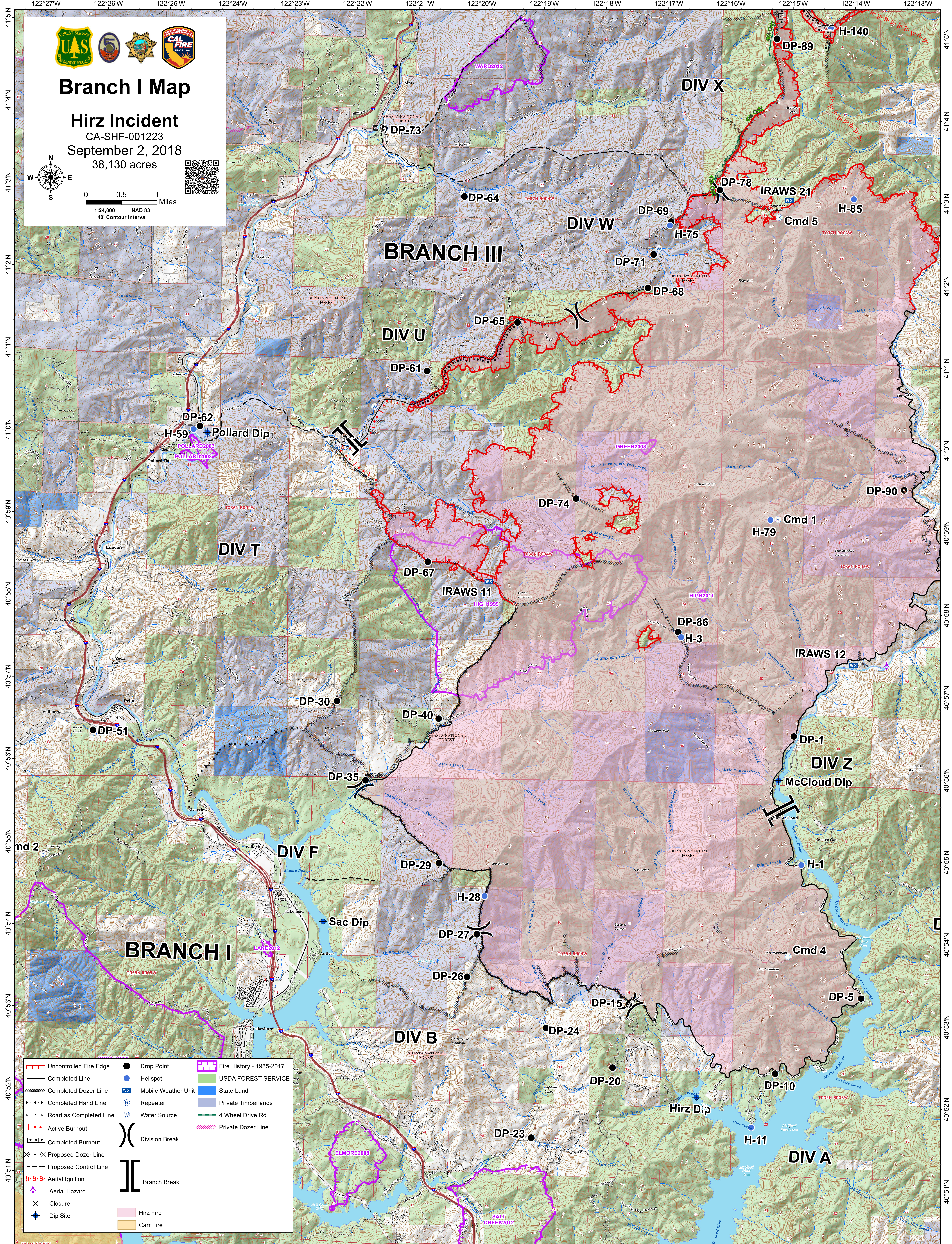
CA-SHF-001223

September 2, 2018

38,130 acres



0 0.5 1 Miles  
1:24,000 NAD 83  
40' Contour Interval



Uncontrolled Fire Edge	Drop Point	Fire History - 1985-2017
Completed Line	Helispot	USDA FOREST SERVICE
Completed Dozer Line	Mobile Weather Unit	State Land
Completed Hand Line	Repeater	Private Timberlands
Road as Completed Line	Water Source	4 Wheel Drive Rd
Active Burnout	Division Break	Private Dozer Line
Completed Burnout	Branch Break	
Proposed Dozer Line		
Proposed Control Line		
Aerial Ignition		
Aerial Hazard		
Closure		
Dip Site		
	Hirz Fire	
	Carr Fire	