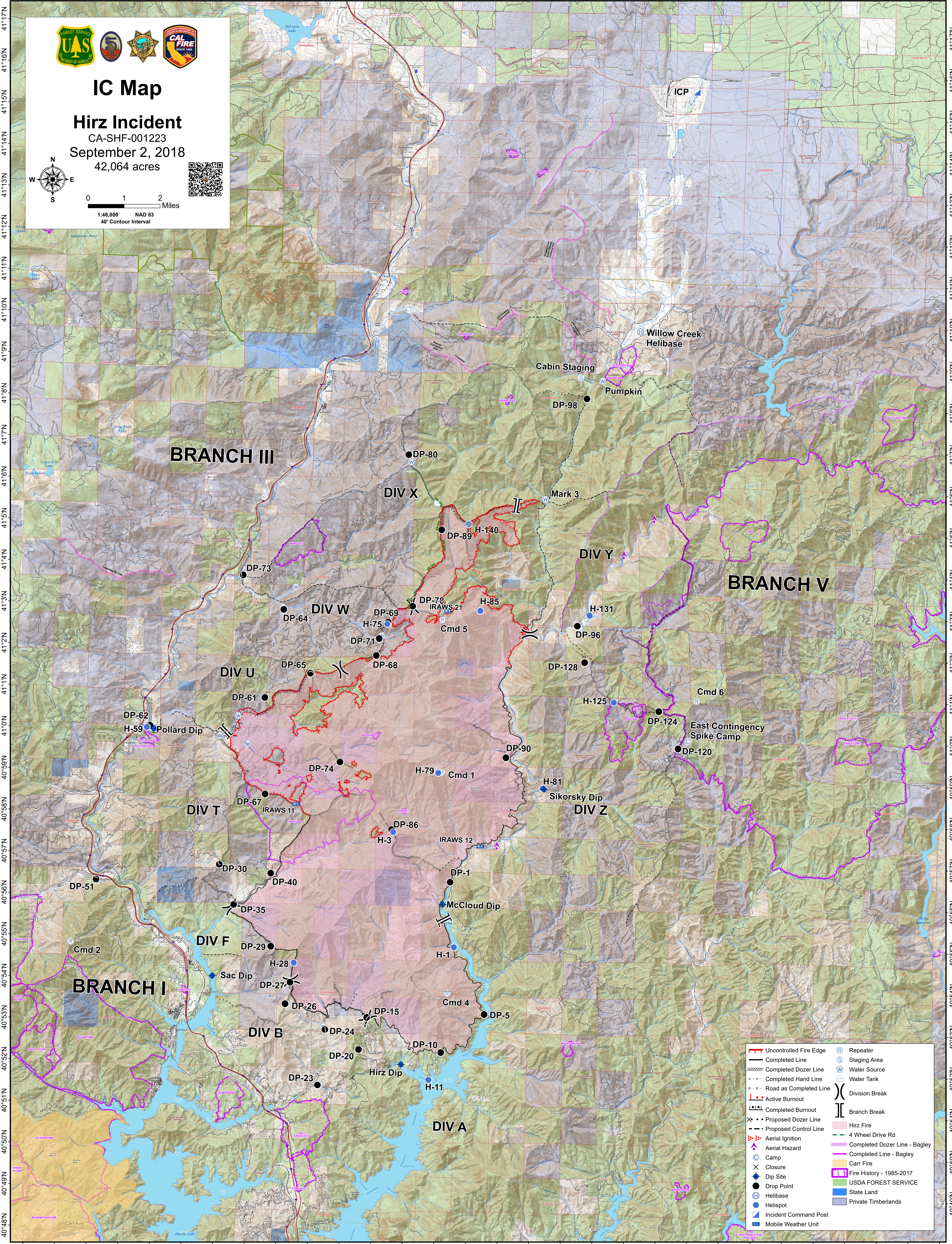


122°28'W 122°26'W 122°24'W 122°22'W 122°20'W 122°18'W 122°16'W 122°14'W 122°12'W 122°10'W 122°9'W 122°8'W 122°7'W 122°6'W 122°5'W 122°4'W 122°3'W 122°2'W 122°1'W 122°0'W



**IC Map**  
**Hirz Incident**  
 CA-SHF-001223  
 September 2, 2018  
 42,064 acres

1:48,000 NAD 83  
 40' Contour Interval

	Uncontrolled Fire Edge		Repeater
	Completed Line		Staging Area
	Completed Dozer Line		Water Source
	Completed Hand Line		Water Tank
	Road as Completed Line		Division Break
	Active Burnout		Branch Break
	Completed Burnout		Hirz Fire
	Proposed Dozer Line		4 Wheel Drive Rd
	Proposed Control Line		Completed Dozer Line - Bagley
	Aerial Ignition		Completed Line - Bagley
	Aerial Hazard		Carr Fire
	Closure		Fire History - 1985-2017
	Dip Site		USDA FOREST SERVICE
	Drop Point		State Land
	Helibase		Private Timberlands
	Helispot		
	Incident Command Post		
	Mobile Weather Unit		