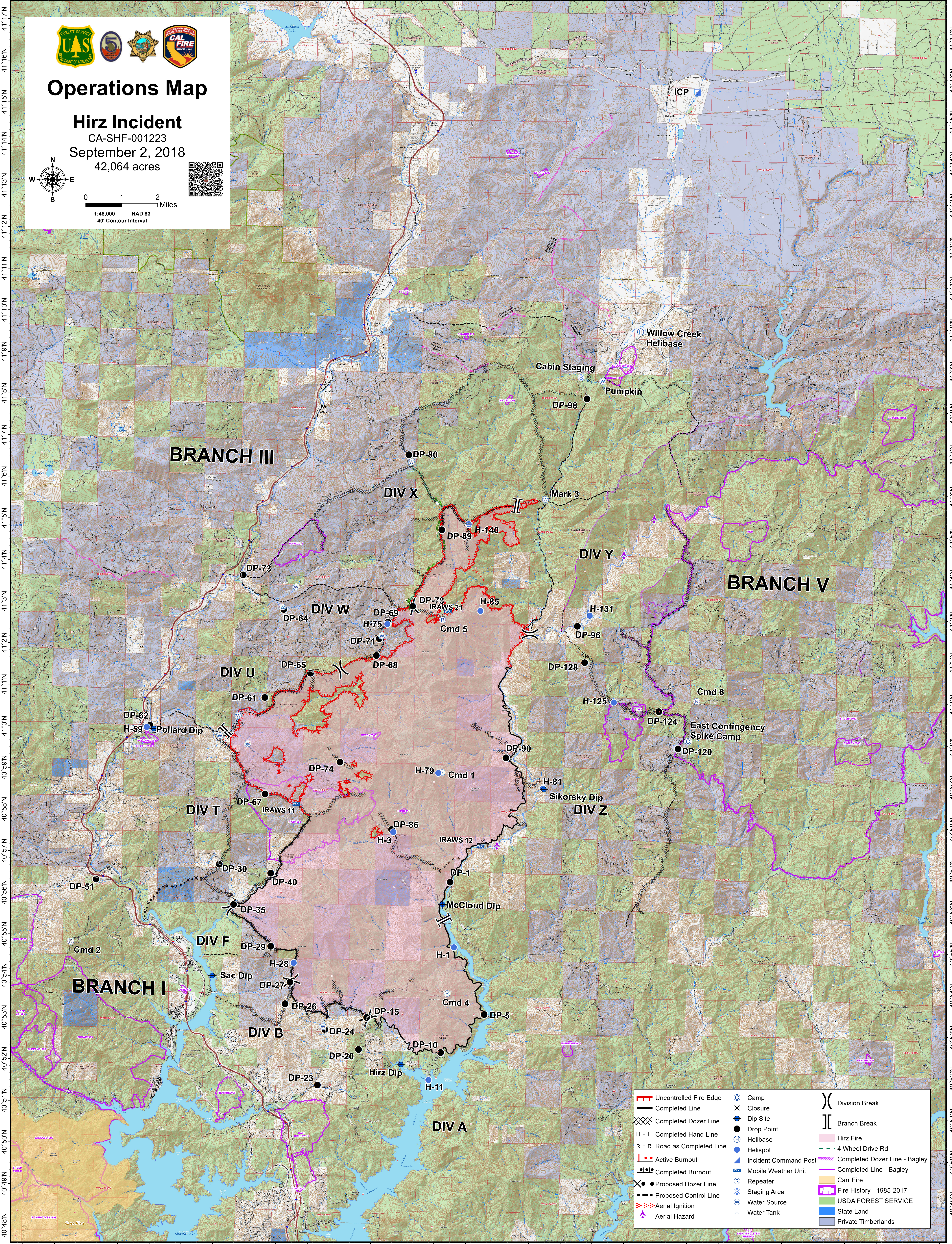


122°28'W 122°26'W 122°24'W 122°22'W 122°20'W 122°18'W 122°16'W 122°14'W 122°12'W 122°10'W 122°9'W 122°8'W 122°7'W 122°6'W 122°5'W 122°4'W 122°3'W 122°2'W 122°1'W 122°0'W



**Operations Map**

**Hirz Incident**  
CA-SHF-001223  
September 2, 2018  
42,064 acres

0 1 2 Miles  
1:48,000 NAD 83  
40' Contour Interval

Uncontrolled Fire Edge	Camp	Division Break
Completed Line	Closure	Branch Break
Completed Dozer Line	Dip Site	Hirz Fire
H - H Completed Hand Line	Drop Point	4 Wheel Drive Rd
R - R Road as Completed Line	Helibase	Completed Line - Bagley
Active Burnout	Helispot	Completed Line - Bagley
Completed Burnout	Incident Command Post	Carr Fire
Proposed Dozer Line	Mobile Weather Unit	Fire History - 1985-2017
Proposed Control Line	Repeater	USDA FOREST SERVICE
Aerial Ignition	Staging Area	State Land
Aerial Hazard	Water Source	Private Timberlands
	Water Tank	