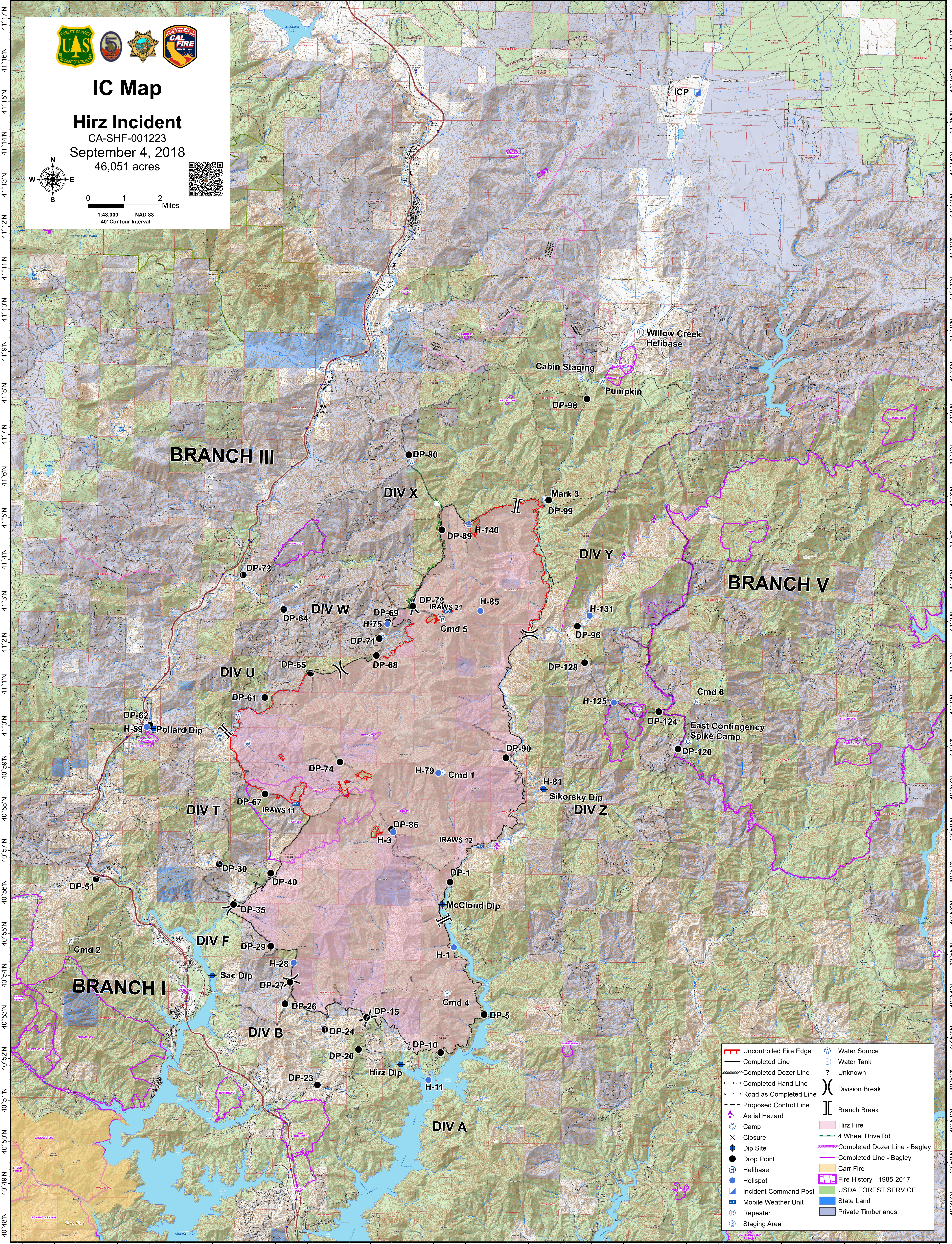


122°28'W 122°26'W 122°24'W 122°22'W 122°20'W 122°18'W 122°16'W 122°14'W 122°12'W 122°10'W 122°9'W 122°8'W 122°7'W 122°6'W 122°5'W 122°4'W 122°3'W 122°2'W 122°1'W 122°0'W



IC Map
Hirz Incident
 CA-SHF-001223
 September 4, 2018
 46,051 acres

1:48,000 NAD 83
 40' Contour Interval

	Uncontrolled Fire Edge		Water Source
	Completed Line		Water Tank
	Completed Dozer Line		Unknown
	Completed Hand Line		Division Break
	Road as Completed Line		Branch Break
	Proposed Control Line		Hirz Fire
	Aerial Hazard		4 Wheel Drive Rd
	Camp		Completed Line - Bagley
	Closure		Carr Fire
	Dip Site		Fire History - 1985-2017
	Drop Point		State Land
	Helibase		Private Timberlands
	Helispot		
	Incident Command Post		
	Mobile Weather Unit		
	Repeater		
	Staging Area		