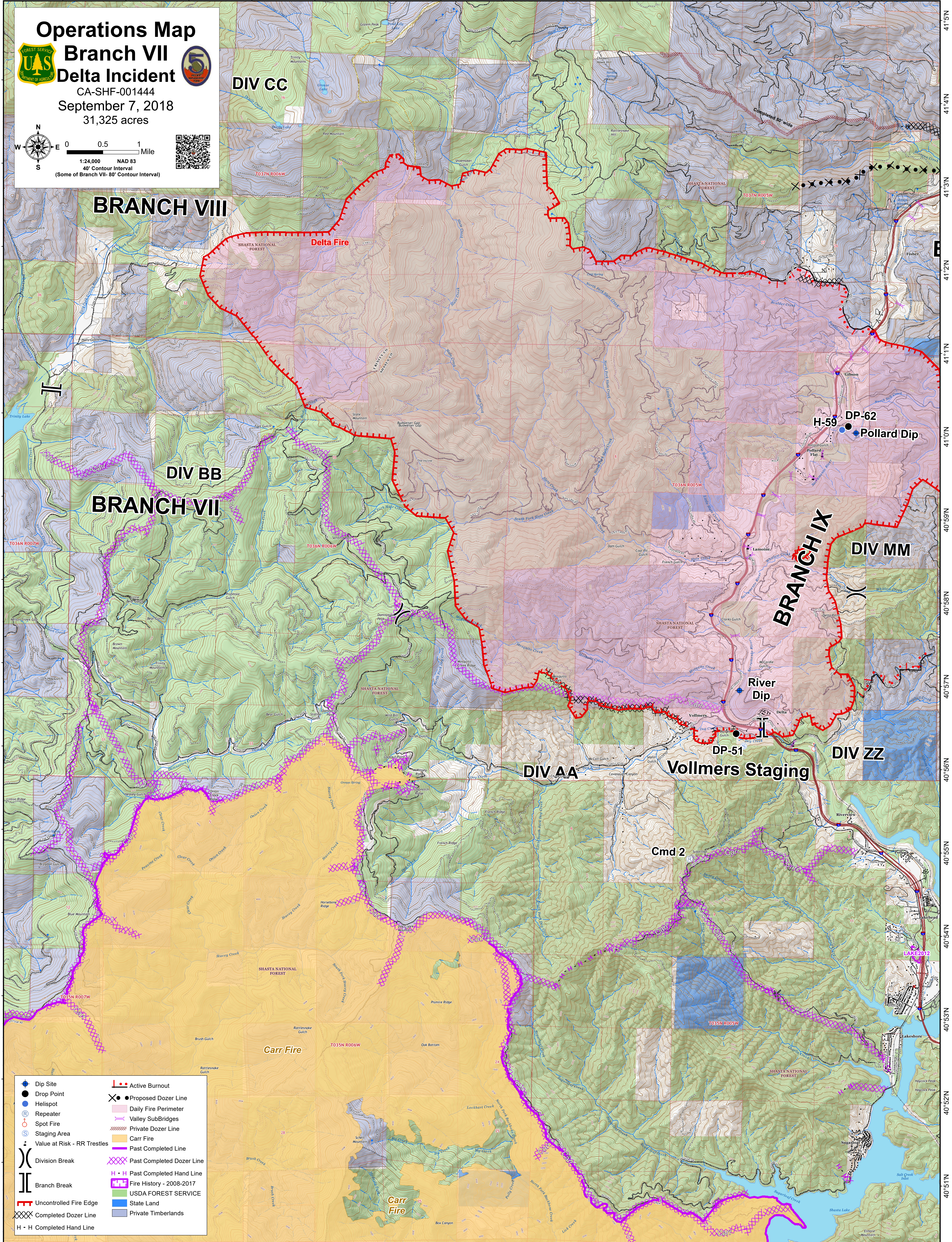





122°37'W 122°36'W 122°35'W 122°34'W 122°33'W 122°32'W 122°31'W 122°30'W 122°29'W 122°28'W 122°27'W 122°26'W 122°25'W 122°24'W



Operations Map
Branch VII
Delta Incident
 CA-SHF-001444
 September 7, 2018
 31,325 acres

0 0.5 1 Mile
 1:24,000 NAD 83
 40' Contour Interval
 (Some of Branch VII- 80' Contour Interval)



BRANCH VIII

DIV CC

BRANCH VII

DIV BB

BRANCH IX

DIV MM

DIV AA

DIV ZZ

- Dip Site
- Drop Point
- Hellspot
- Repeater
- Spot Fire
- Staging Area
- Value at Risk - RR Trestles
- Division Break
- Branch Break
- Uncontrolled Fire Edge
- Completed Dozer Line
- H - H Completed Hand Line
- Active Burnout
- Proposed Dozer Line
- Daily Fire Perimeter
- Valley SubBridges
- Private Dozer Line
- Carr Fire
- Past Completed Line
- Past Completed Dozer Line
- Past Completed Hand Line
- Fire History - 2008-2017
- USDA FOREST SERVICE
- State Land
- Private Timberlands