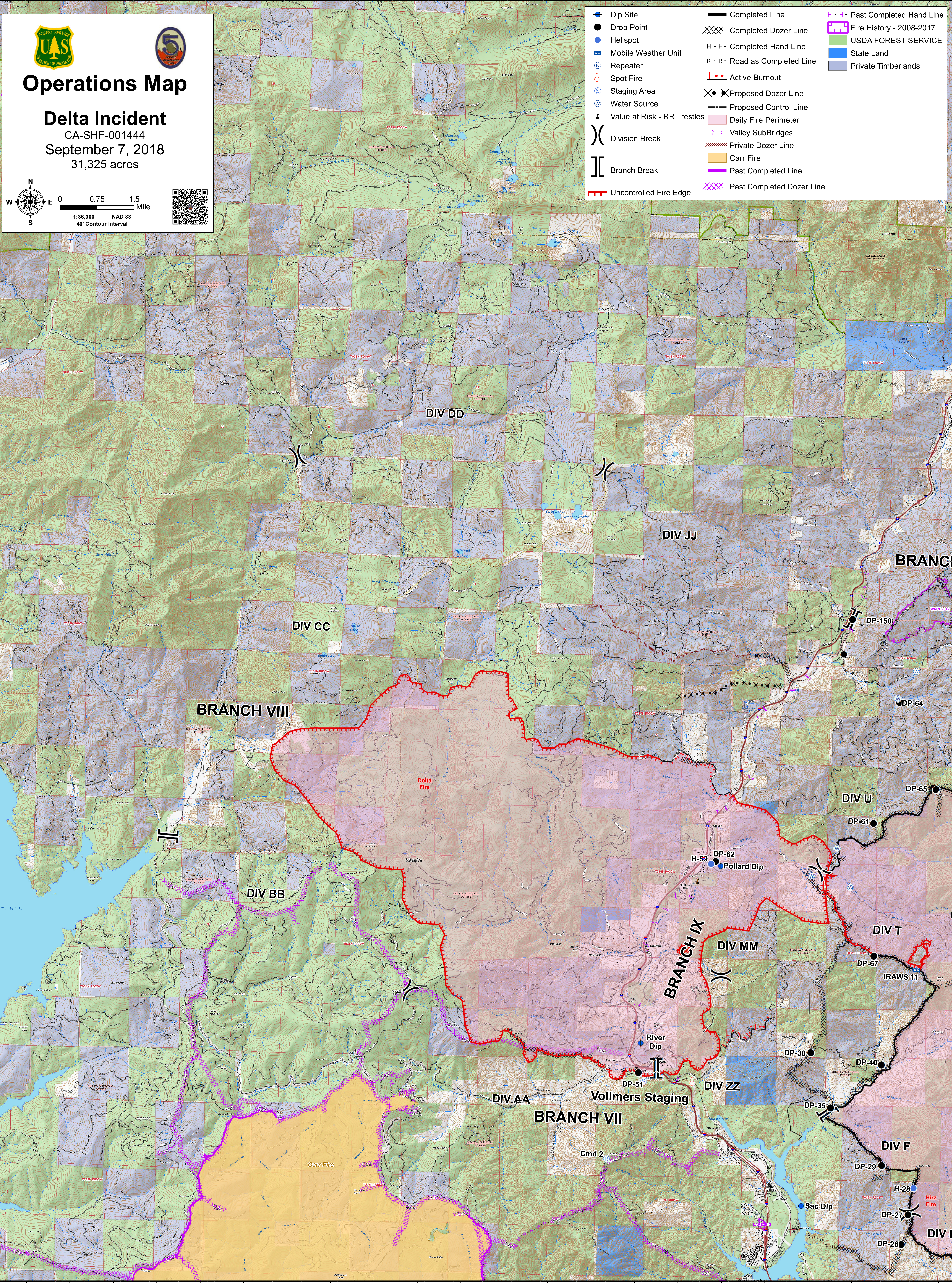





122°41'W 122°40'W 122°39'W 122°38'W 122°37'W 122°36'W 122°35'W 122°34'W 122°33'W 122°32'W 122°31'W 122°30'W 122°29'W 122°28'W 122°27'W 122°26'W 122°25'W 122°24'W 122°23'W 122°22'W 122°21'W 122°20'W





Operations Map
Delta Incident
CA-SHF-001444
September 7, 2018
31,325 acres

0 0.75 1.5 Mile
1:36,000 NAD 83
40' Contour Interval



- Dip Site
- Drop Point
- Helispot
- Mobile Weather Unit
- Repeater
- Spot Fire
- Staging Area
- Water Source
- Value at Risk - RR Trestles
- Division Break
- Branch Break
- Uncontrolled Fire Edge
- Completed Line
- Completed Dozer Line
- H - H - Completed Hand Line
- R - R - Road as Completed Line
- Active Burnout
- Proposed Dozer Line
- Proposed Control Line
- Daily Fire Perimeter
- Valley SubBridges
- Private Dozer Line
- Carr Fire
- Past Completed Line
- Past Completed Dozer Line
- H - H - Past Completed Hand Line
- Fire History - 2008-2017
- USDA FOREST SERVICE
- State Land
- Private Timberlands

41°14'N
41°13'N
41°12'N
41°11'N
41°10'N
41°9'N
41°8'N
41°7'N
41°6'N
41°5'N
41°4'N
41°3'N
41°2'N
41°1'N
41°0'N
40°59'N
40°58'N
40°57'N
40°56'N
40°55'N
40°54'N
40°53'N

122°40'W
122°39'W
122°38'W
122°37'W
122°36'W
122°35'W
122°34'W
122°33'W
122°32'W
122°31'W
122°30'W
122°29'W
122°28'W
122°27'W
122°26'W
122°25'W
122°24'W
122°23'W
122°22'W
122°21'W
122°20'W