

122°35'W

122°34'W

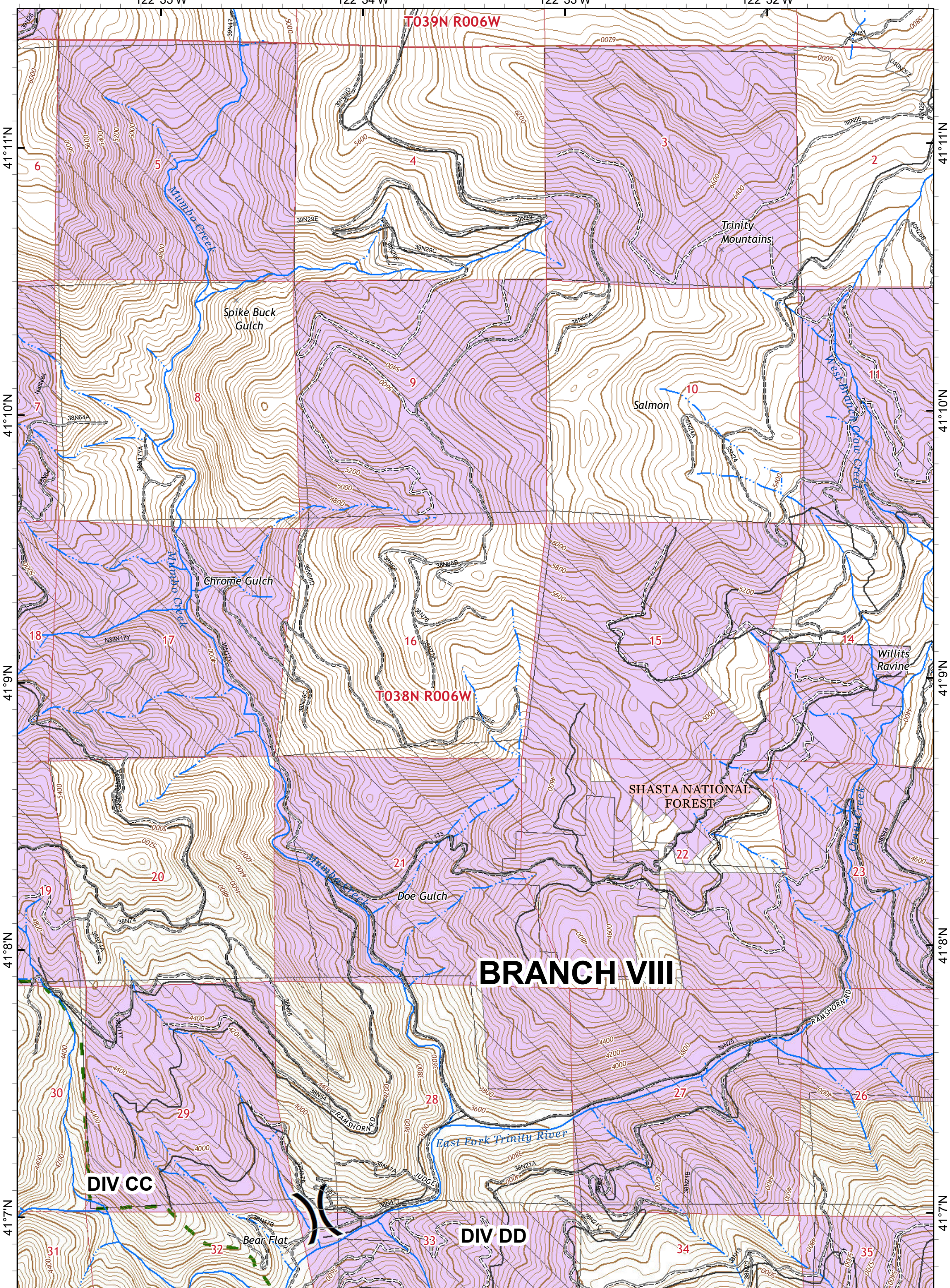
122°33'W

122°32'W

T039N R006W

T038N R006W

# BRANCH VIII



Division Break

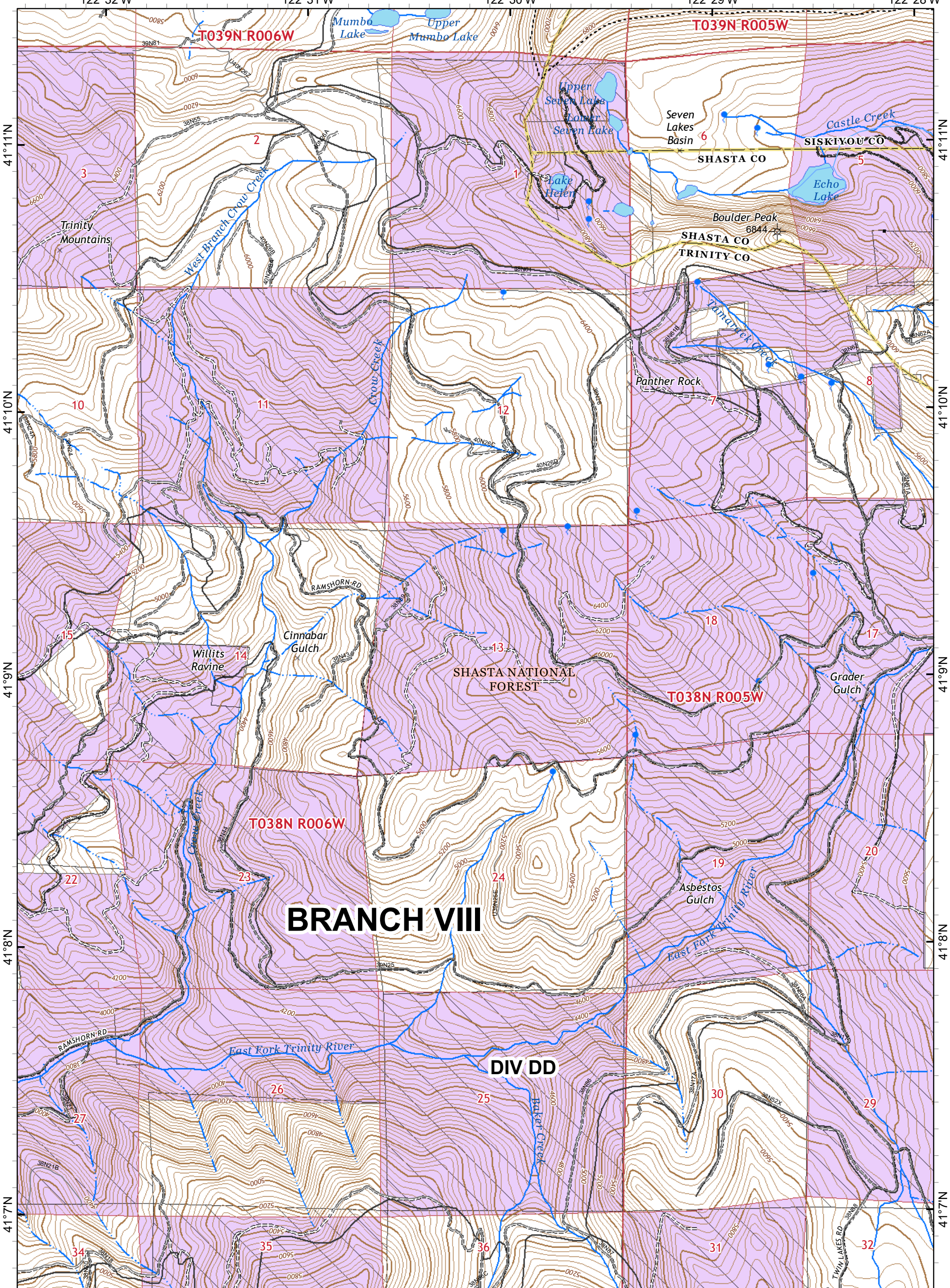
- Private Timber Lands
- Inventoried Roadless Area
- USDA Forest Service
- Non-Forest Service




**IAP MAP PAGE N-10**

**DELTA INCIDENT**  
 CA-SHF-001444  
 September 7, 2018  
 Night Shift  
 31,325 Acres

Nad 83 1:24,000  
40 Ft Contour Interval

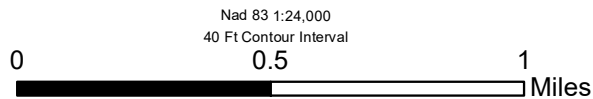
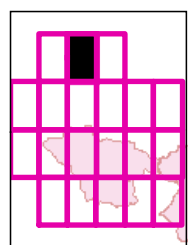
0 0.5 1 Miles

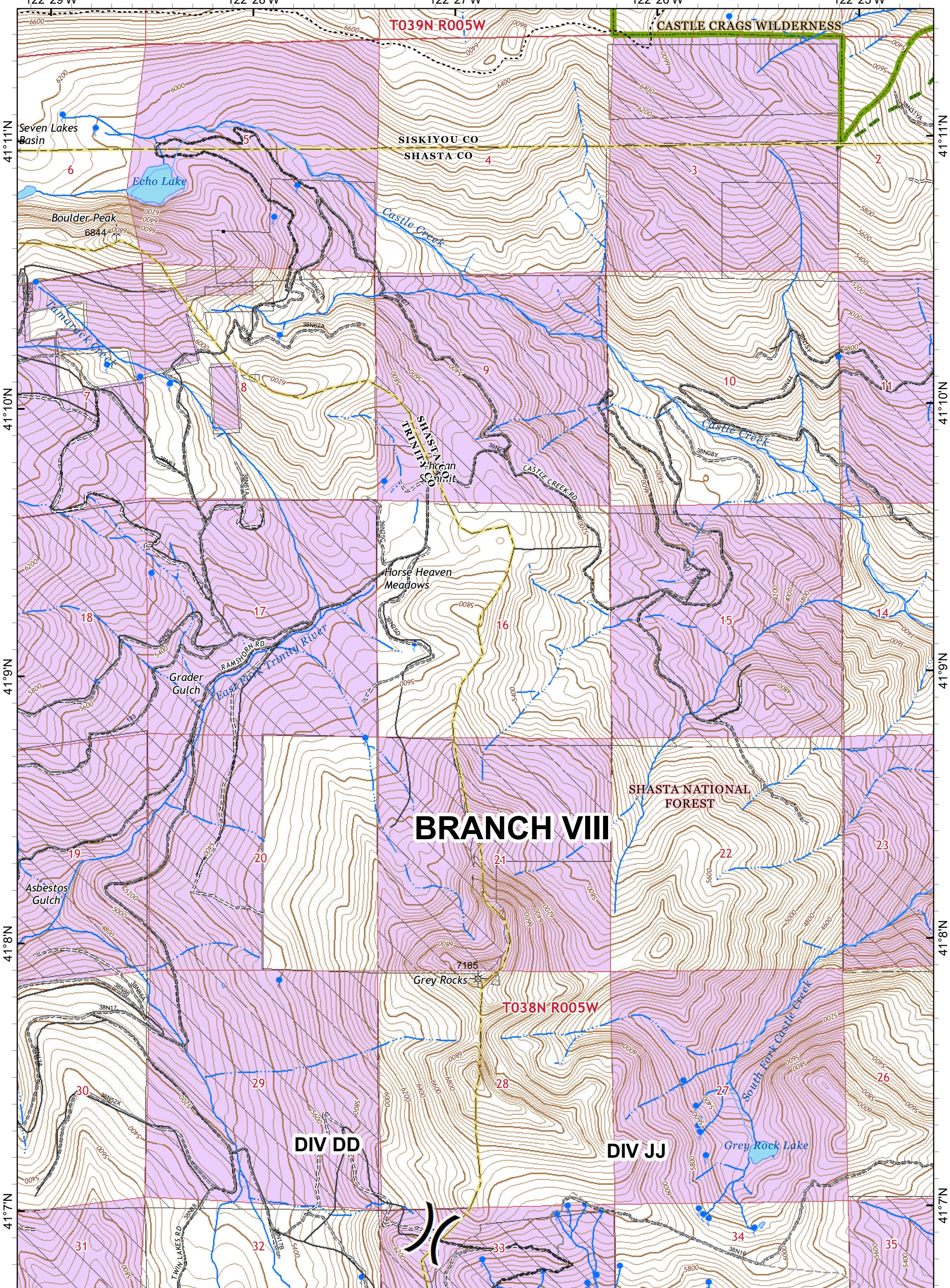


-  Private Timber Lands
-  USDA Forest Service
-  Non-Forest Service

**IAP MAP PAGE N-11**





**DELTA INCIDENT**  
 CA-SHF-001444  
 September 7, 2018  
 Night Shift  
 31,325 Acres





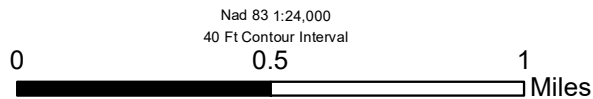
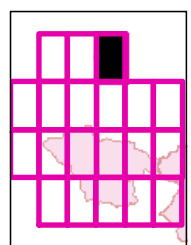
# BRANCH VIII

⌘ Division Break

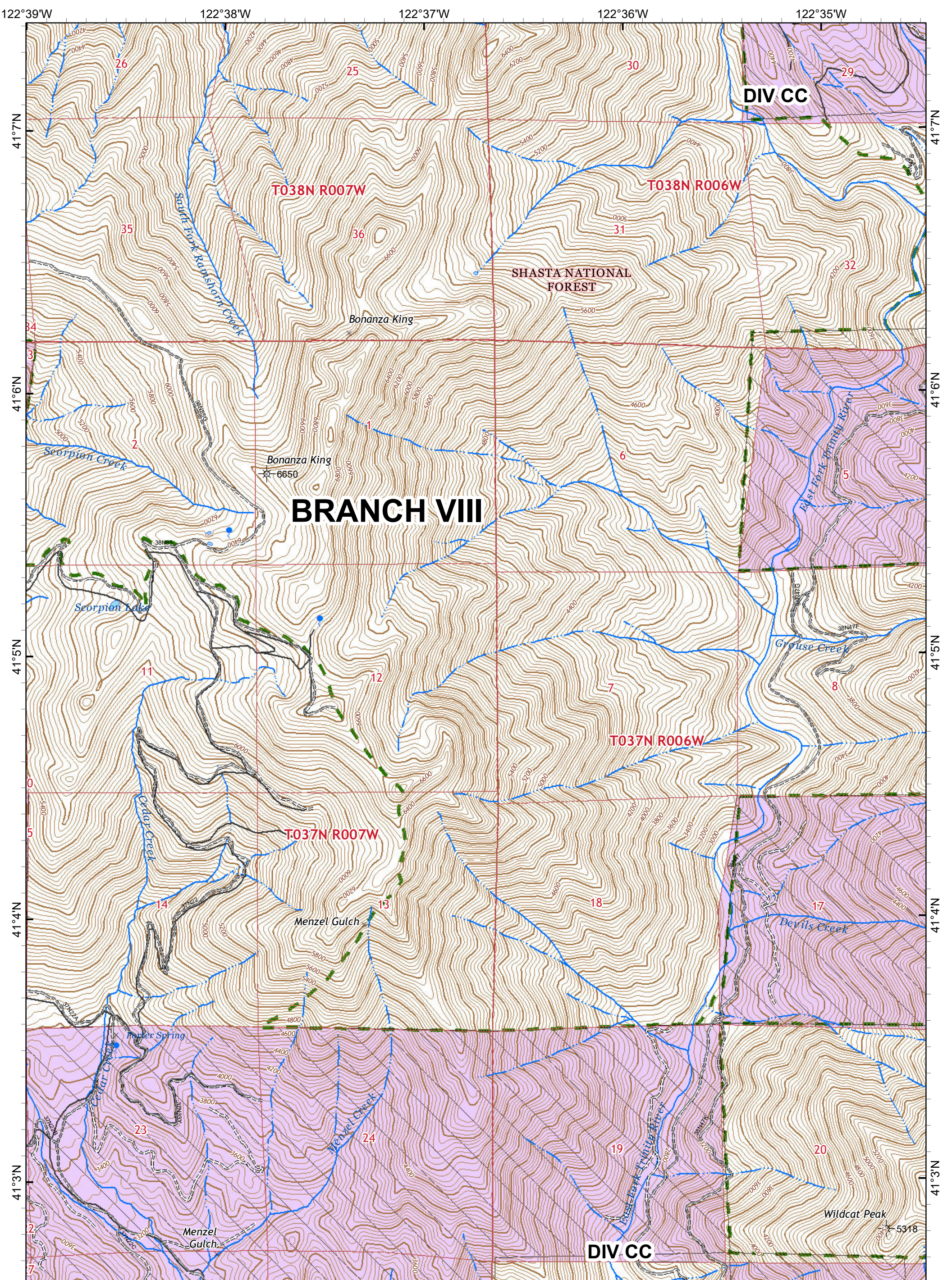
-  Private Timber Lands
-  Inventoried Roadless Area
-  USDA Forest Service
-  Non-Forest Service

## IAP MAP PAGE N-12





**DELTA INCIDENT**  
 CA-SHF-001444  
 September 7, 2018  
 Night Shift  
 31,325 Acres



Nad 83 1:24,000  
 40 Ft Contour Interval

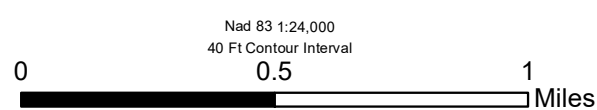
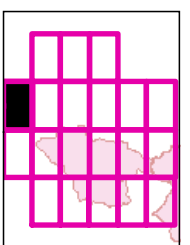


⌘ Division Break

-  Private Timber Lands
-  Inventoried Roadless Area
-  USDA Forest Service
-  Non-Forest Service

### IAP MAP PAGE O-9

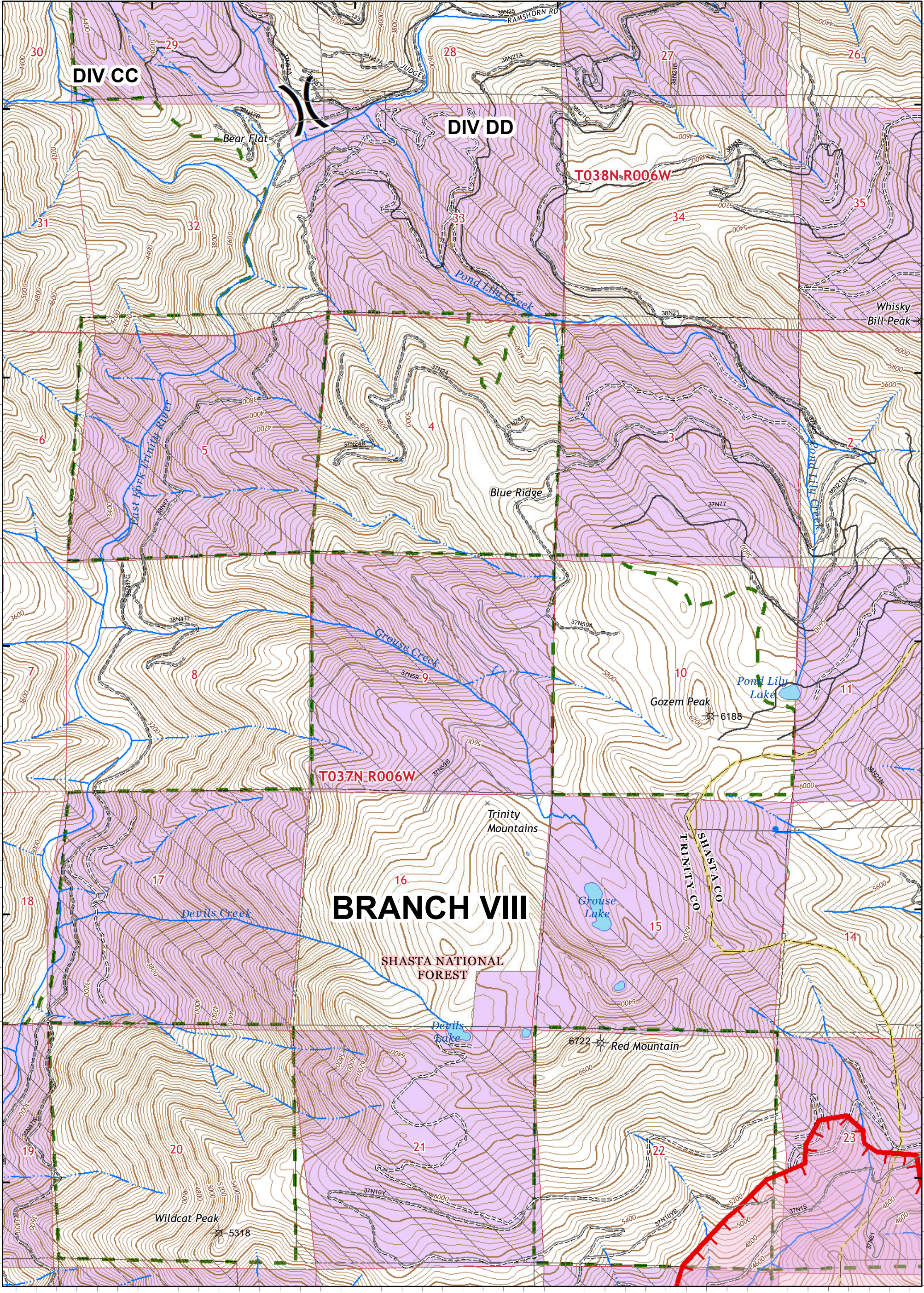
**DELTA INCIDENT**  
 CA-SHF-001444  
 September 7, 2018  
 Night Shift  
 31,325 Acres



122°35'W 122°34'W 122°33'W 122°32'W

41°7'N 41°6'N 41°5'N 41°4'N 41°3'N

41°7'N 41°6'N 41°5'N 41°4'N 41°3'N

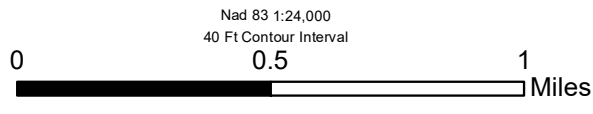
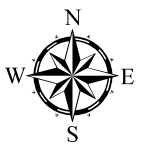
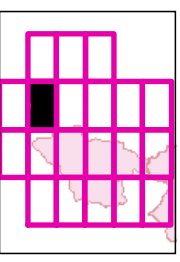


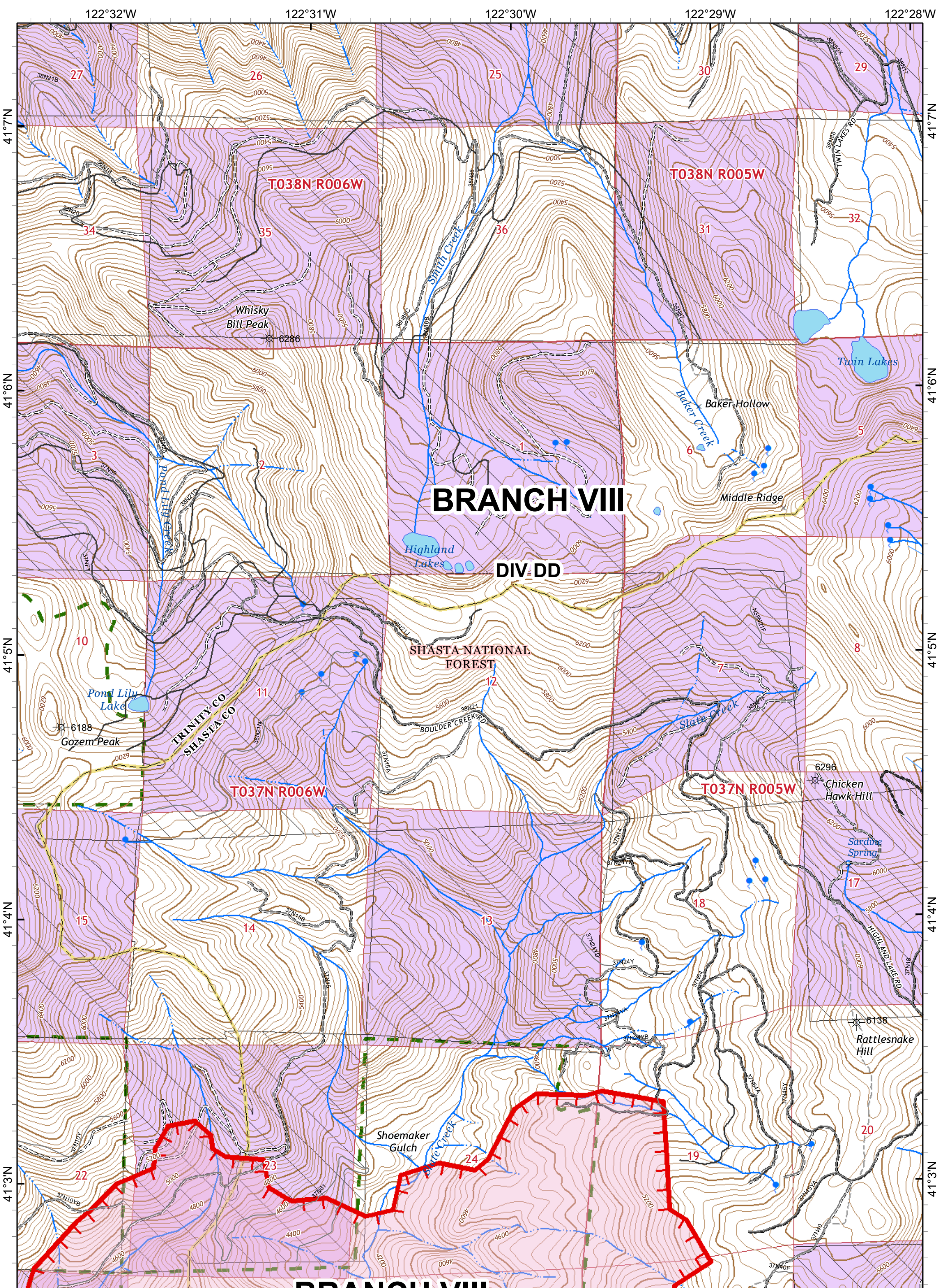
Division Break  
 Uncontrolled Fire Edge  
 Wildfire Daily Fire Perimeter



Private Timber Lands  
 Inventoried Roadless Area  
 USDA Forest Service  
 Non-Forest Service





### IAP MAP PAGE O-10

**DELTA INCIDENT**  
 CA-SHF-001444  
 September 7, 2018  
 Night Shift  
 31,325 Acres



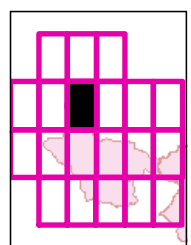


 Uncontrolled Fire Edge  
 Wildfire Daily Fire Perimeter

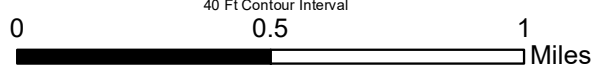
 Private Timber Lands  
 Inventoried Roadless Area  
 USDA Forest Service  
 Non-Forest Service

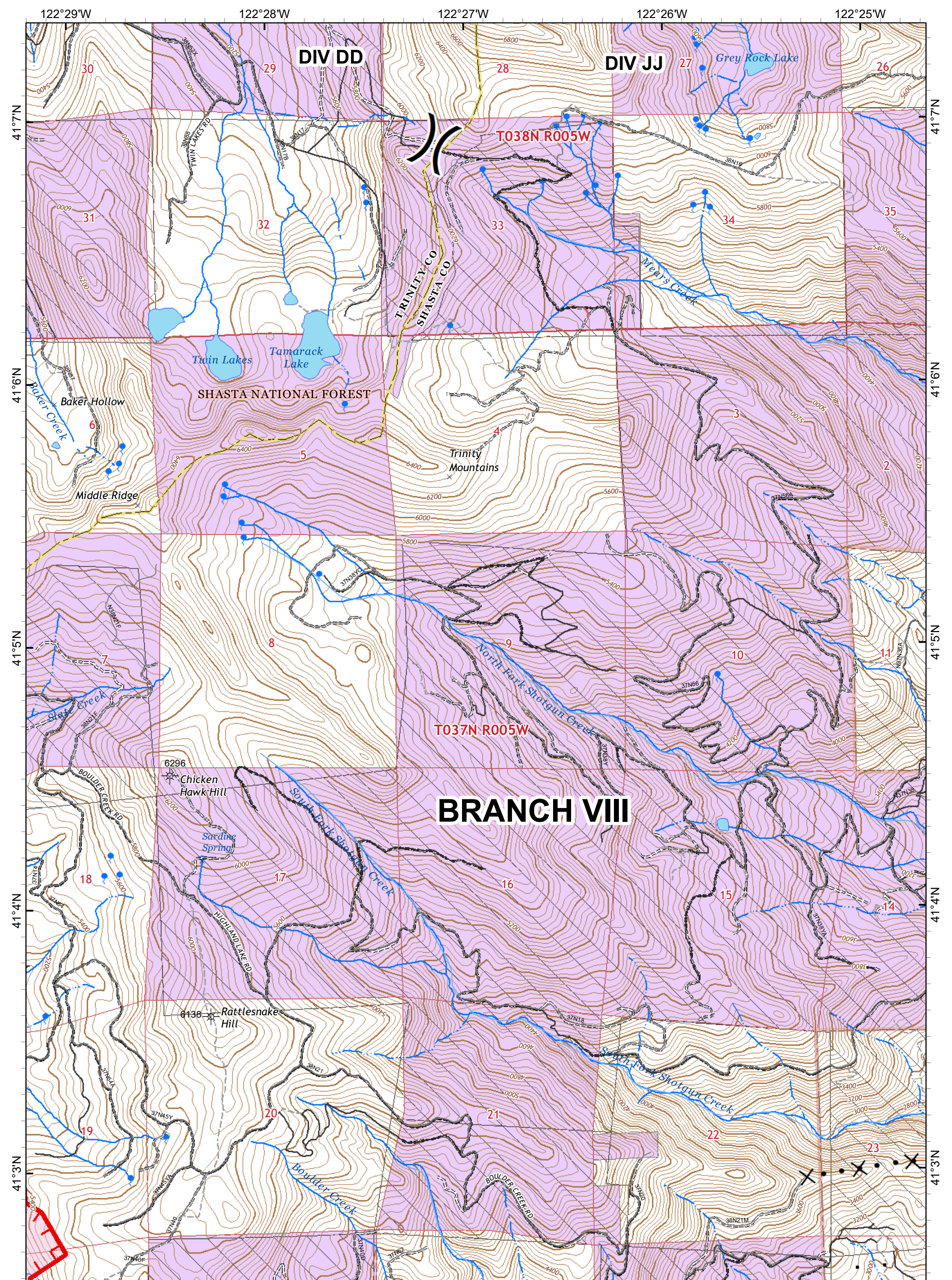
### IAP MAP PAGE O-11

**DELTA INCIDENT**  
 CA-SHF-001444  
 September 7, 2018  
 Night Shift  
 31,325 Acres



Nad 83 1:24,000  
 40 Ft Contour Interval





DIV DD

DIV JJ

T038N R005W

T037N R005W

**BRANCH VIII**

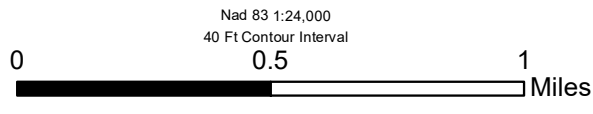
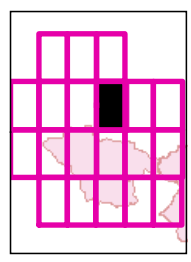
SHASTA NATIONAL FOREST

- Private Timber Lands
- USDA Forest Service
- Non-Forest Service

- Division Break
- Uncontrolled Fire Edge
- Proposed Dozer Line
- Wildfire Daily Fire Perimeter

**IAP MAP PAGE O-12**

**DELTA INCIDENT**  
 CA-SHF-001444  
 September 7, 2018  
 Night Shift  
 31,325 Acres



Nad 83 1:24,000  
 40 Ft Contour Interval

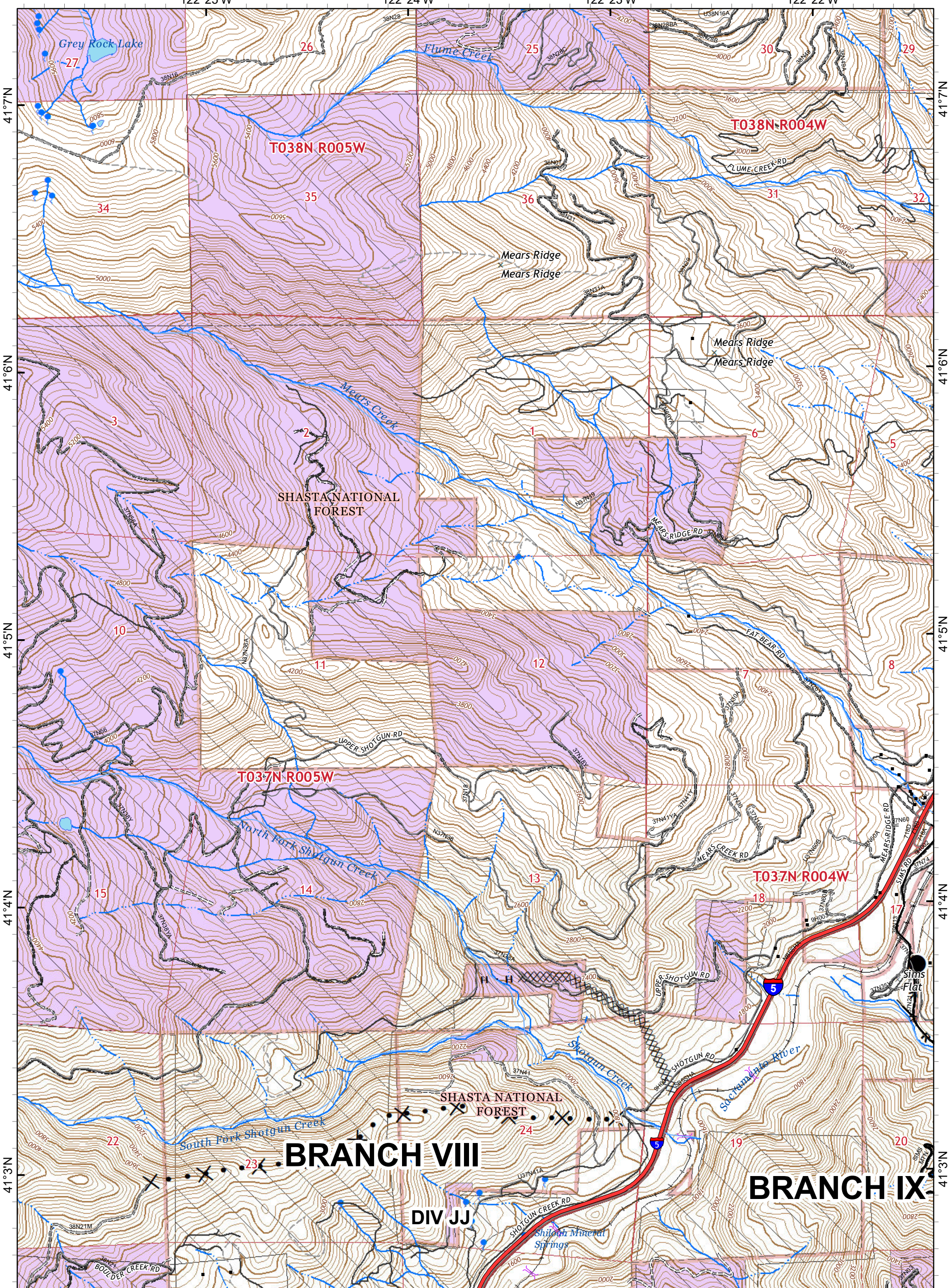


122°25'W

122°24'W

122°23'W

122°22'W



41°7'N

41°6'N

41°5'N

41°4'N

41°3'N

41°7'N

41°6'N

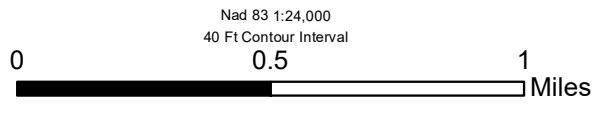
41°5'N

41°4'N

41°3'N

- Drop Point
- ┆ Branch Break
- XXXX Completed Dozer Line
- R - Road as Completed Line
- H - Completed Hand Line
- X Proposed Dozer Line

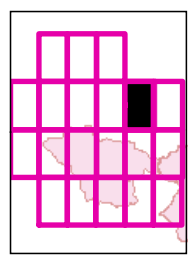
- Private Timber Lands
- USDA Forest Service
- Non-Forest Service



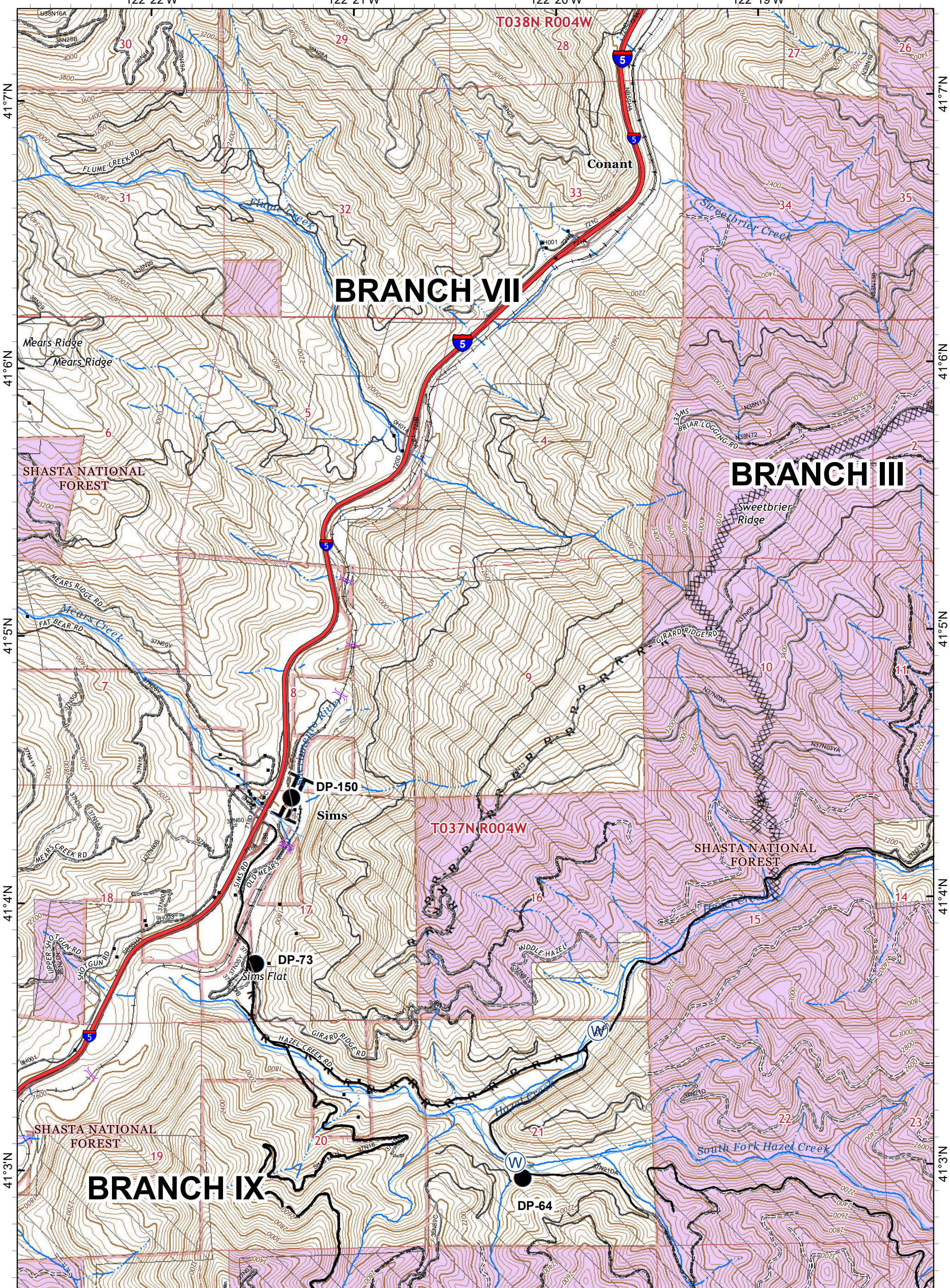
Nad 83 1:24,000  
40 Ft Contour Interval

### IAP MAP PAGE O-13

**DELTA INCIDENT**  
CA-SHF-001444  
September 7, 2018  
Night Shift  
31,325 Acres







**BRANCH VII**

**BRANCH III**

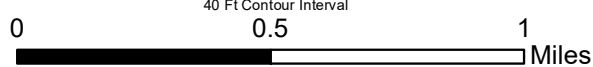
**BRANCH IX**

● Drop Point    **I** Branch Break    **XXXX** Completed Dozer Line    **R** Road as Completed Line

Private Timber Lands  
 USDA Forest Service  
 Non-Forest Service

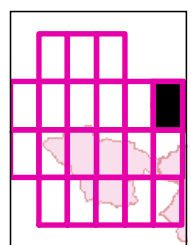


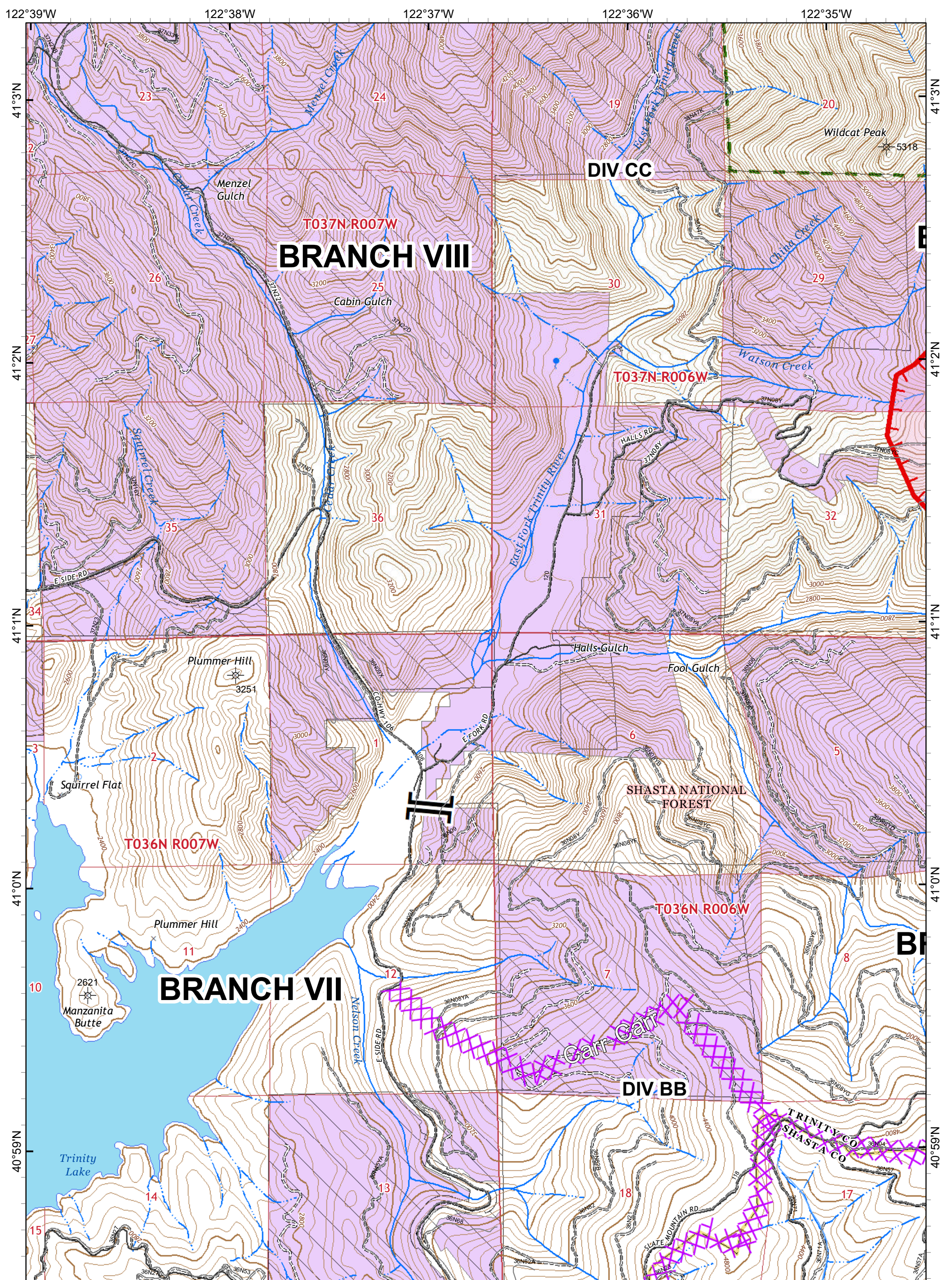
Nad 83 1:24,000  
 40 Ft Contour Interval



**IAP MAP PAGE O-14**

**DELTA INCIDENT**  
 CA-SHF-001444  
 September 7, 2018  
 Night Shift  
 31,325 Acres



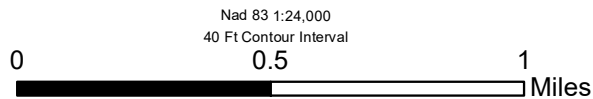
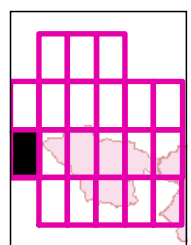


Branch Break  
 Uncontrolled Fire Edge  
 Wildfire Daily Fire Perimeter

Private Timber Lands  
 Inventoried Roadless Area  
 USDA Forest Service  
 Non-Forest Service

**IAP MAP PAGE P-9**

**DELTA INCIDENT**  
 CA-SHF-001444  
 September 7, 2018  
 Night Shift  
 31,325 Acres



Nad 83 1:24,000  
 40 Ft Contour Interval



122°35'W

122°34'W

122°33'W

122°32'W

41°3'N

41°3'N

41°2'N

41°2'N

41°1'N

41°1'N

41°0'N

41°0'N

40°59'N

40°59'N

# BRANCH VIII

DIV CC

T037N R006W

T036N R006W

# BRANCH VII

DIV BB

# BRANCH VII

Wildcat Peak  
5318

State Mountain  
5495

SHASTA NATIONAL FOREST

TRINITY CO  
SHASTA CO

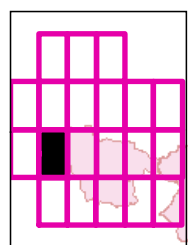
Budweis  
Bugsy  
Gap

Uncontrolled Fire Edge  
Wildfire Daily Fire Perimeter

Private Timber Lands  
Inventoried Roadless Area  
USDA Forest Service  
Non-Forest Service

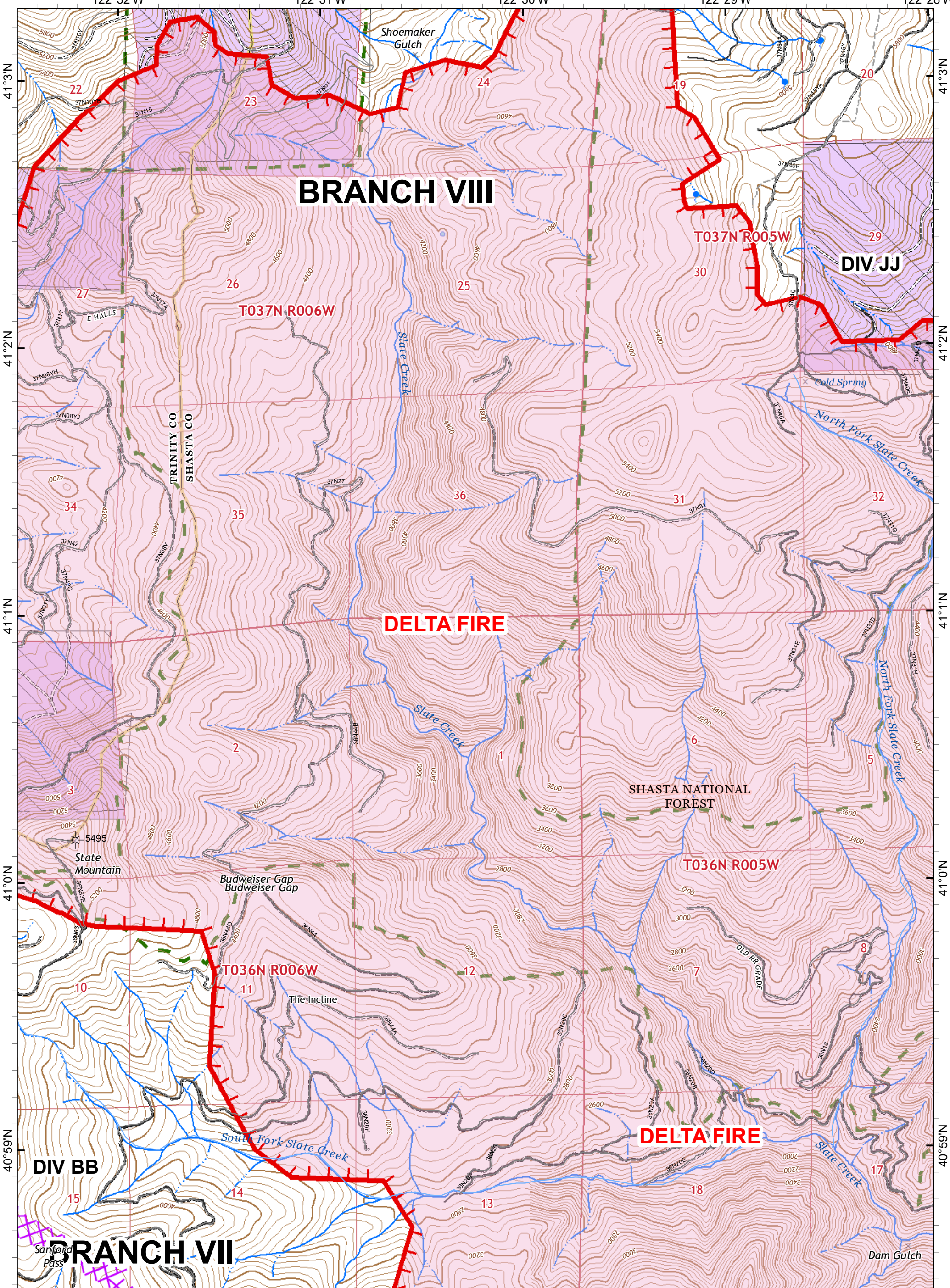
## IAP MAP PAGE P-10

DELTA INCIDENT  
CA-SHF-001444  
September 7, 2018  
Night Shift  
31,325 Acres



Nad 83 1:24,000  
40 Ft Contour Interval  
0 0.5 1 Miles





# BRANCH VIII

## DELTA FIRE

### SHASTA NATIONAL FOREST

# DIV JJ

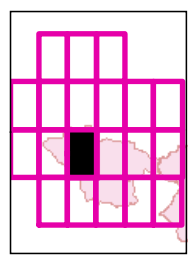
# BRANCH VII

Uncontrolled Fire Edge  
 Wildfire Daily Fire Perimeter

Private Timber Lands  
 Inventoried Roadless Area  
 USDA Forest Service  
 Non-Forest Service

## IAP MAP PAGE P-11

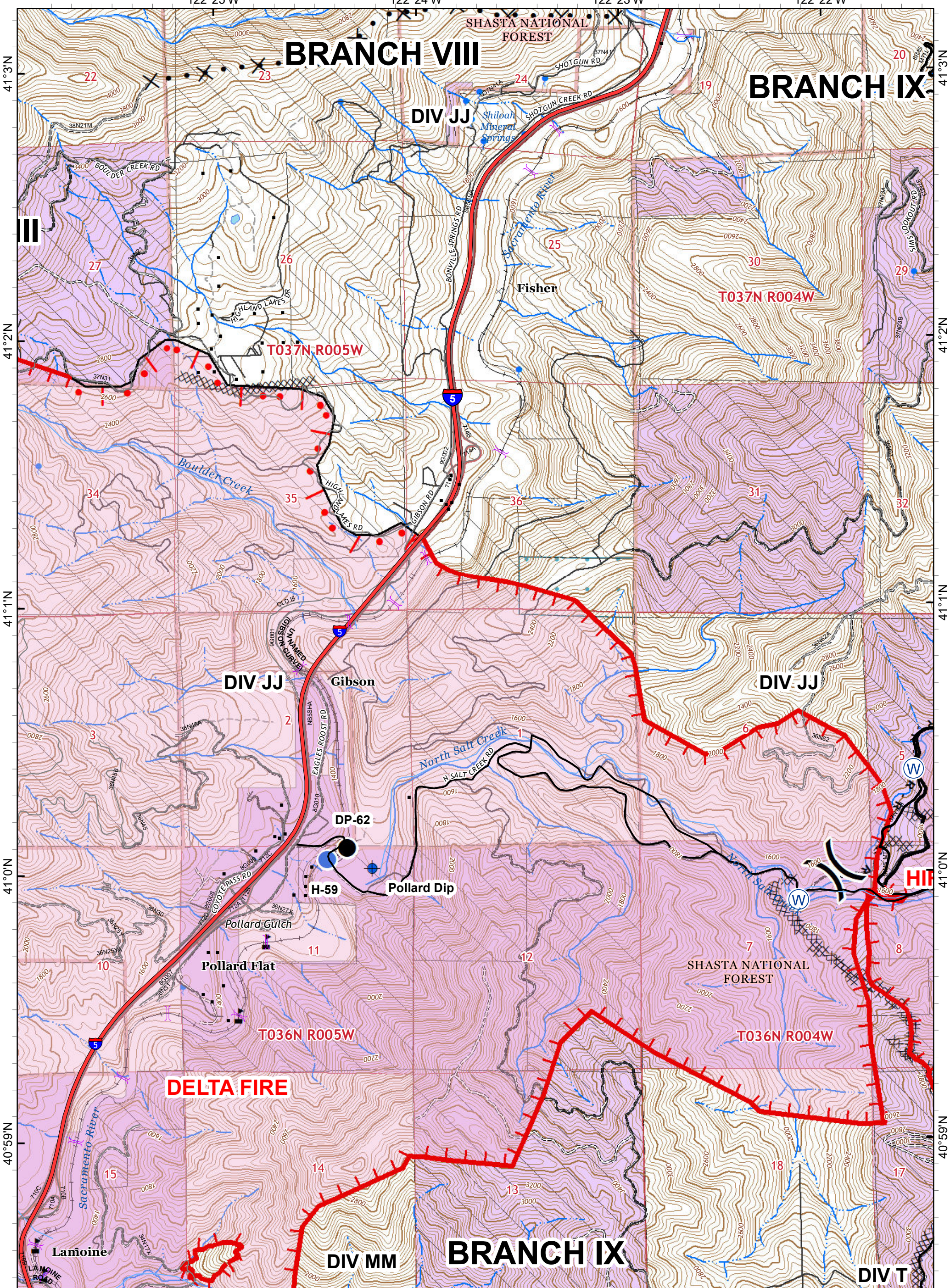
**DELTA INCIDENT**  
 CA-SHF-001444  
 September 7, 2018  
 Night Shift  
 31,325 Acres



Nad 83 1:24,000  
 40 Ft Contour Interval  
 0 0.5 1 Miles

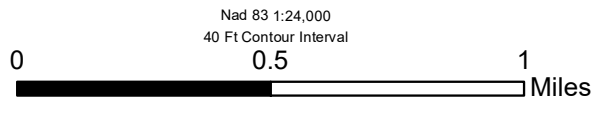






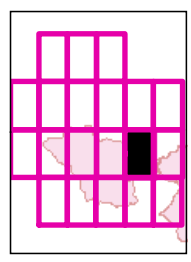
Dip Site  
 Drop Point  
 Hellsport  
 Value at Risk  
 Division Break  
 Completed Dozer Line  
 Active Burnout  
 Completed Hand Line  
 Proposed Dozer Line  
 Wildfire Daily Fire Perimeter

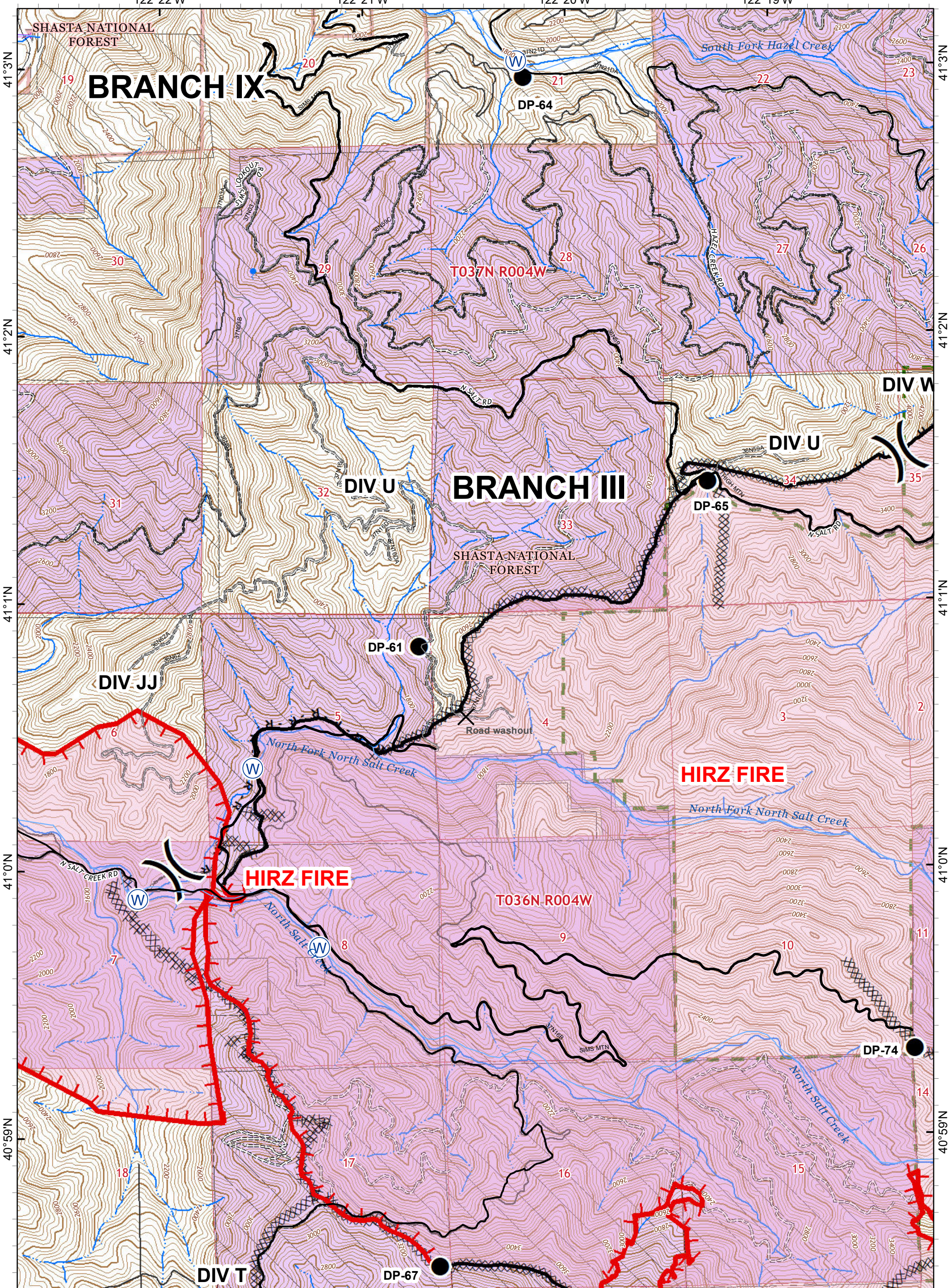
Road as Completed Line  
 Private Timber Lands  
 State Lands  
 USDA Forest Service  
 Non-Forest Service



### IAP MAP PAGE P-13

**DELTA INCIDENT**  
 CA-SHF-001444  
 September 7, 2018  
 Night Shift  
 31,325 Acres



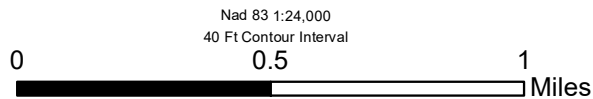
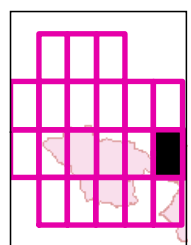


- Drop Point
- ( ) Division Break
- Uncontrolled Fire Edge
- Completed Line
- ⊗ Completed Dozer Line
- ⊗ Mobile Weather Unit
- Completed Hand Line
- Road as Completed Line
- Wildfire Daily Fire Perimeter

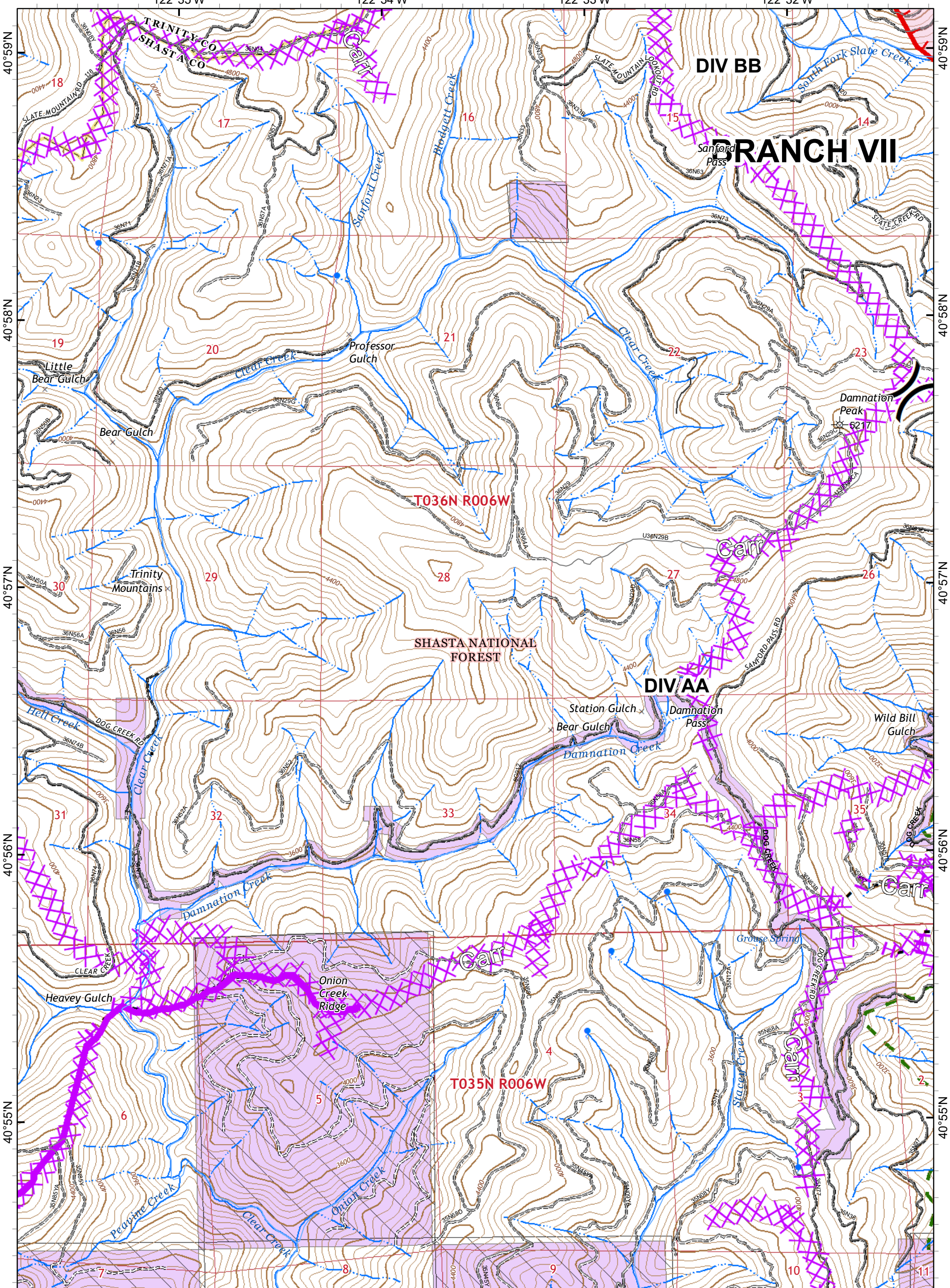
- ▨ Private Timber Lands
- ▨ Inventoried Roadless Area
- ▨ USDA Forest Service
- ▨ Non-Forest Service

**IAP MAP PAGE P-14**

**DELTA INCIDENT**  
 CA-SHF-001444  
 September 7, 2018  
 Night Shift  
 31,325 Acres



Nad 83 1:24,000  
 40 Ft Contour Interval

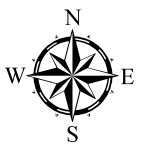
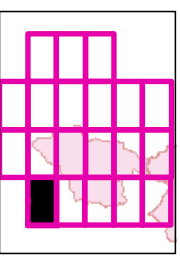


Uncontrolled Fire Edge  
Wildfire Daily Fire Perimeter

Private Timber Lands  
Inventoried Roadless Area  
USDA Forest Service  
Non-Forest Service

### IAP MAP PAGE Q-10

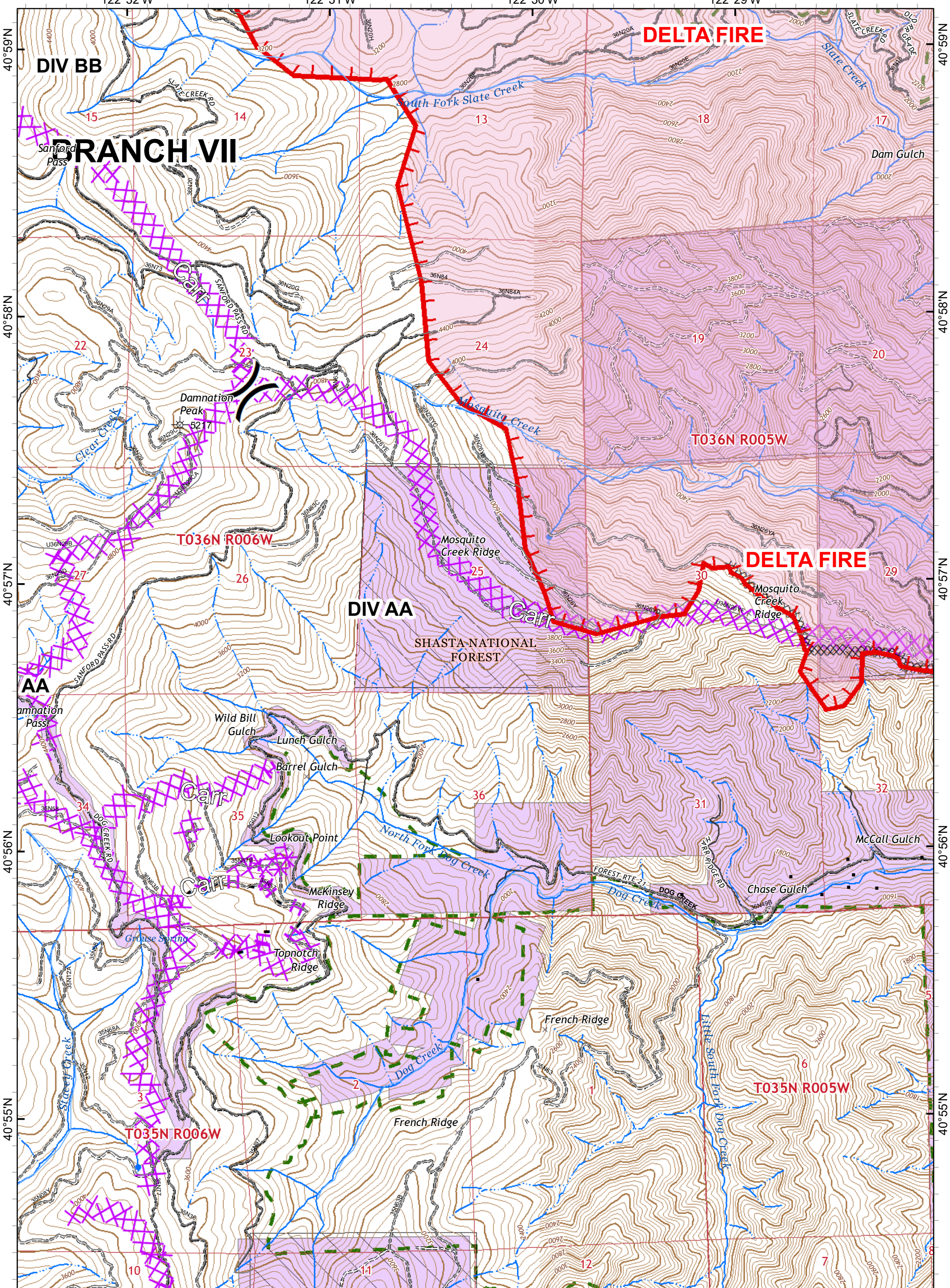
DELTA INCIDENT  
CA-SHF-001444  
September 7, 2018  
Night Shift  
31,325 Acres



Nad 83 1:24,000  
40 Ft Contour Interval  
0 0.5 1 Miles





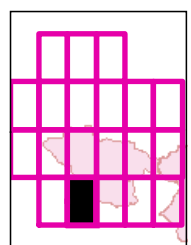


Uncontrolled Fire Edge  
 Wildfire Daily Fire Perimeter  
 Completed Dozer Line

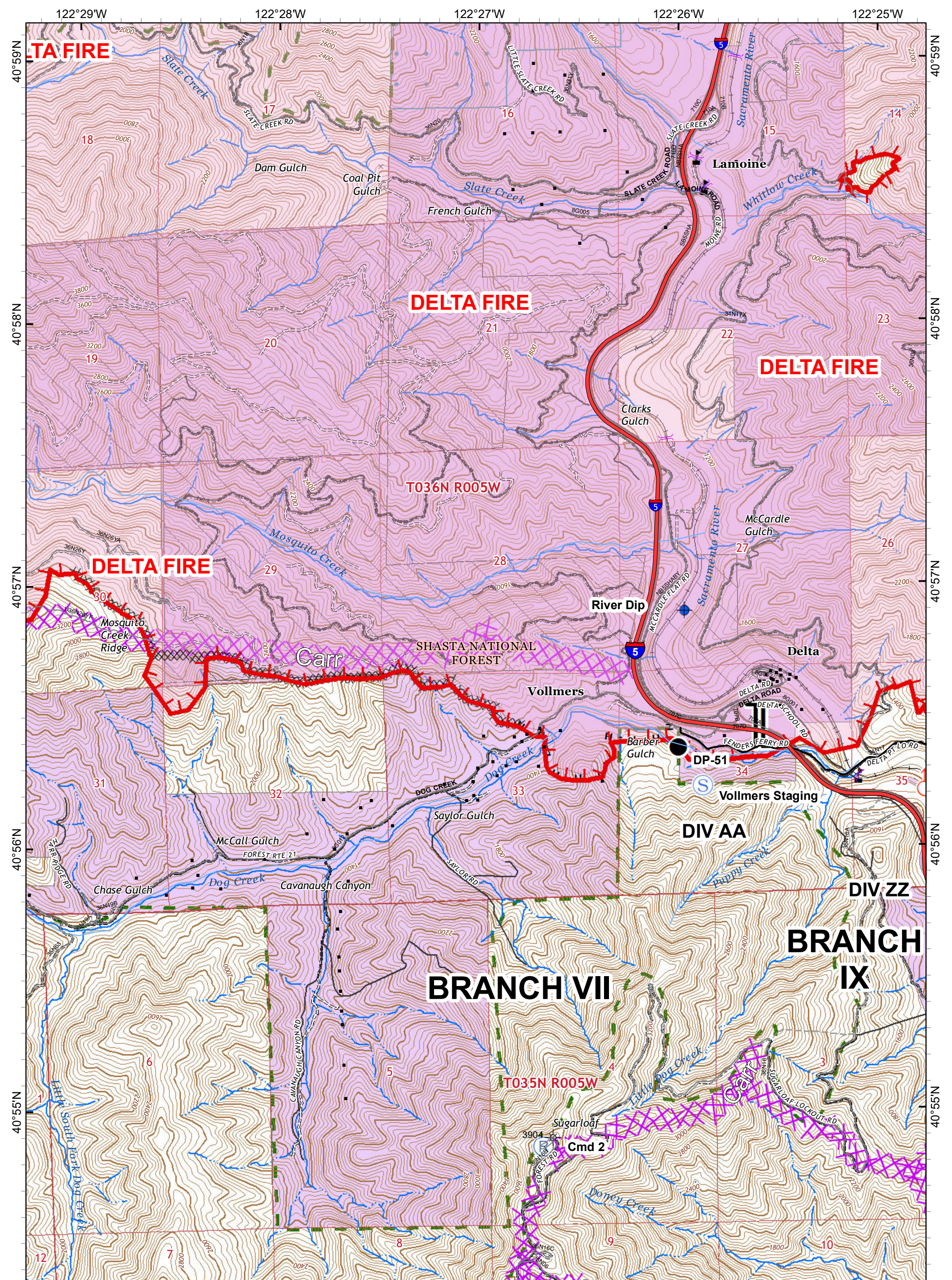
Private Timber Lands  
 Inventoried Roadless Area  
 USDA Forest Service  
 Non-Forest Service

### IAP MAP PAGE Q-11

**DELTA INCIDENT**  
 CA-SHF-001444  
 September 7, 2018  
 Night Shift  
 31,325 Acres



Nad 83 1:24,000  
 40 Ft Contour Interval  
 0 0.5 1 Miles

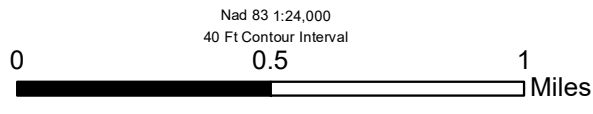
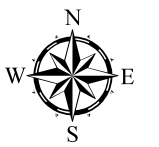
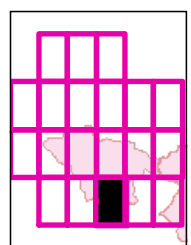


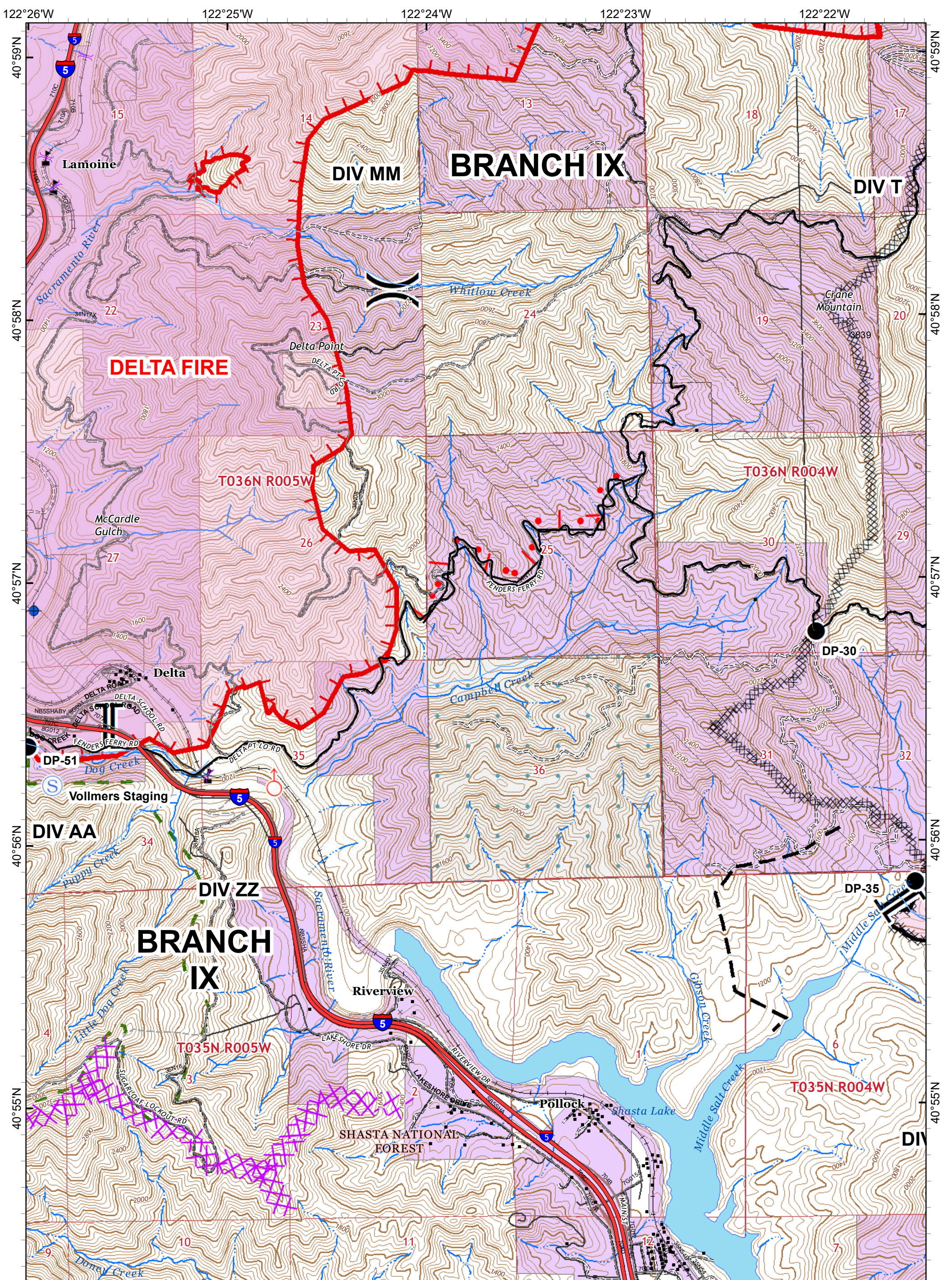
- Dip Site
- Staging Area
- Uncontrolled Fire Edge
- Completed Dozer Line
- Drop Point
- Value at Risk
- Branch Break
- Repeater
- Completed Hand Line
- Wildfire Daily Fire Perimeter

- Private Timber Lands
- Inventoried Roadless Area
- State Lands
- USDA Forest Service
- Non-Forest Service

### IAP MAP PAGE Q-12

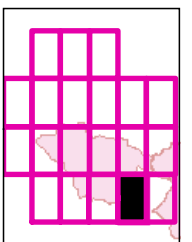
**DELTA INCIDENT**  
 CA-SHF-001444  
 September 7, 2018  
 Night Shift  
 31,325 Acres





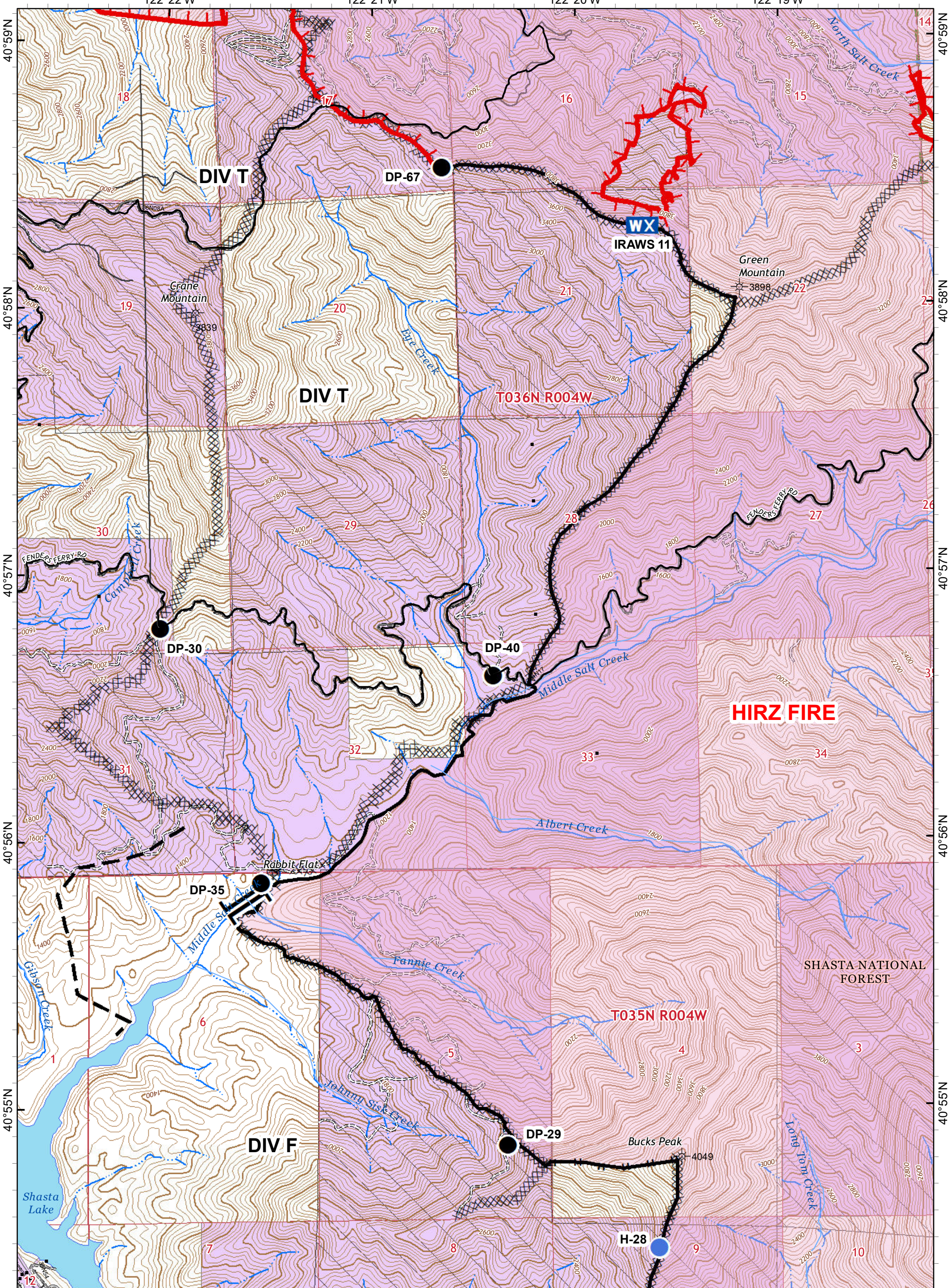
### IAP MAP PAGE Q-13

**DELTA INCIDENT**  
 CA-SHF-001444  
 September 7, 2018  
 Night Shift  
 31,325 Acres



Nad 83 1:24,000  
 40 Ft Contour Interval

0 0.5 1 Miles



- Dip Site
- Drop Point
- Hellsport
- Mobile Weather Unit
- Division Break
- Branch Break
- Uncontrolled Fire Edge
- Planned Fire Line
- Completed Line
- Completed Dozer Line
- Completed Hand Line
- Wildfire Daily Fire Perimeter

- Private Timber Lands
- Inventoried Roadless Area
- USDA Forest Service
- Non-Forest Service



Nad 83 1:24,000  
40 Ft Contour Interval

0 0.5 1 Miles

## IAP MAP PAGE Q-14

**DELTA INCIDENT**  
CA-SHF-001444  
September 7, 2018  
Night Shift  
31,325 Acres

