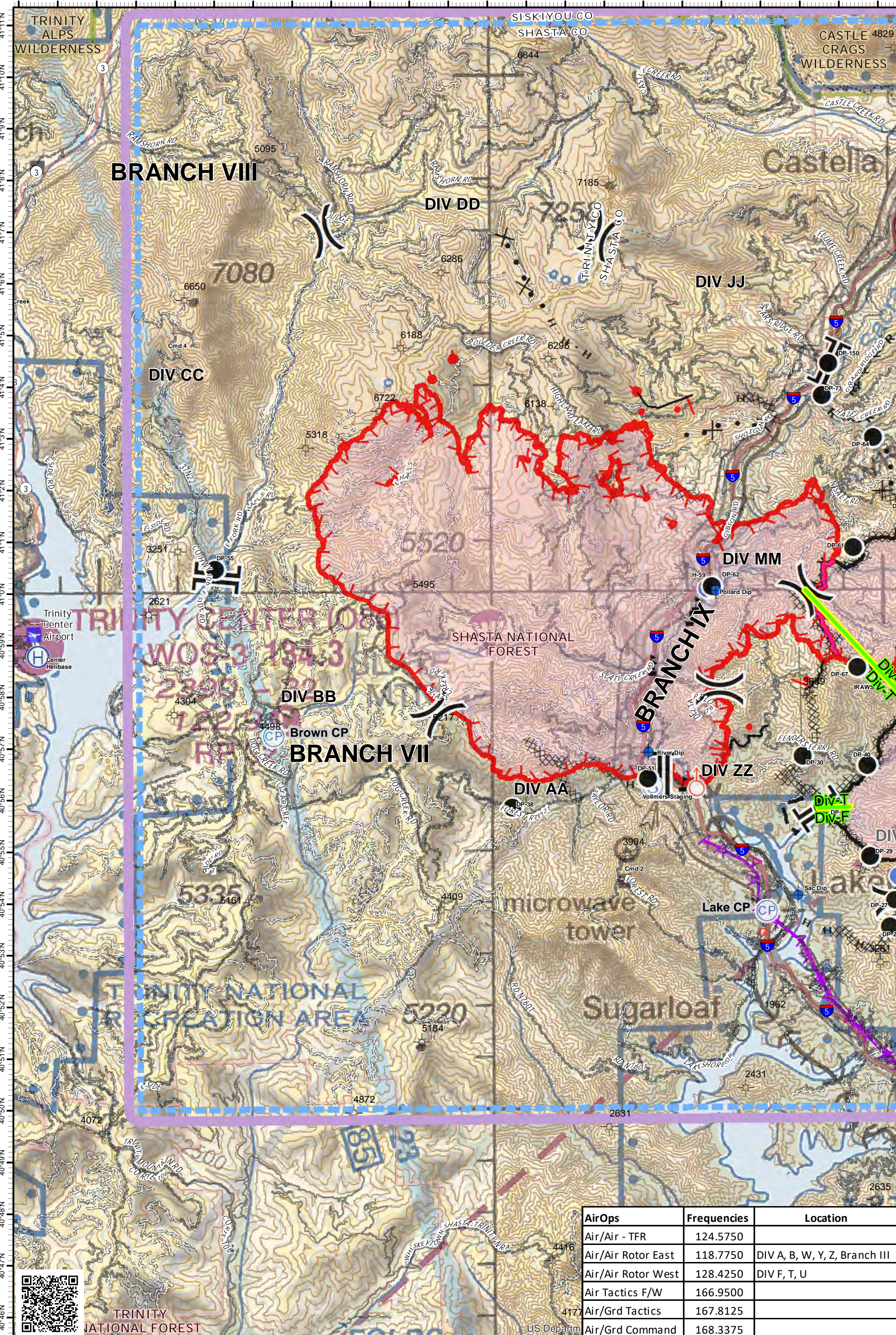


122°42'W 122°41'W 122°40'W 122°39'W 122°38'W 122°37'W 122°36'W 122°35'W 122°34'W 122°33'W 122°32'W 122°31'W 122°30'W 122°29'W 122°28'W 122°27'W 122°26'W 122°25'W 122°24'W 122°23'W 122°22'W 122°21'W 122°20'W



AirOps	Frequencies	Location
Air/Air - TFR	124.5750	
Air/Air Rotor East	118.7750	DIV A, B, W, Y, Z, Branch III
Air/Air Rotor West	128.4250	DIV F, T, U
Air Tactics F/W	166.9500	
Air/Grd Tactics	167.8125	
Air/Grd Command	168.3375	

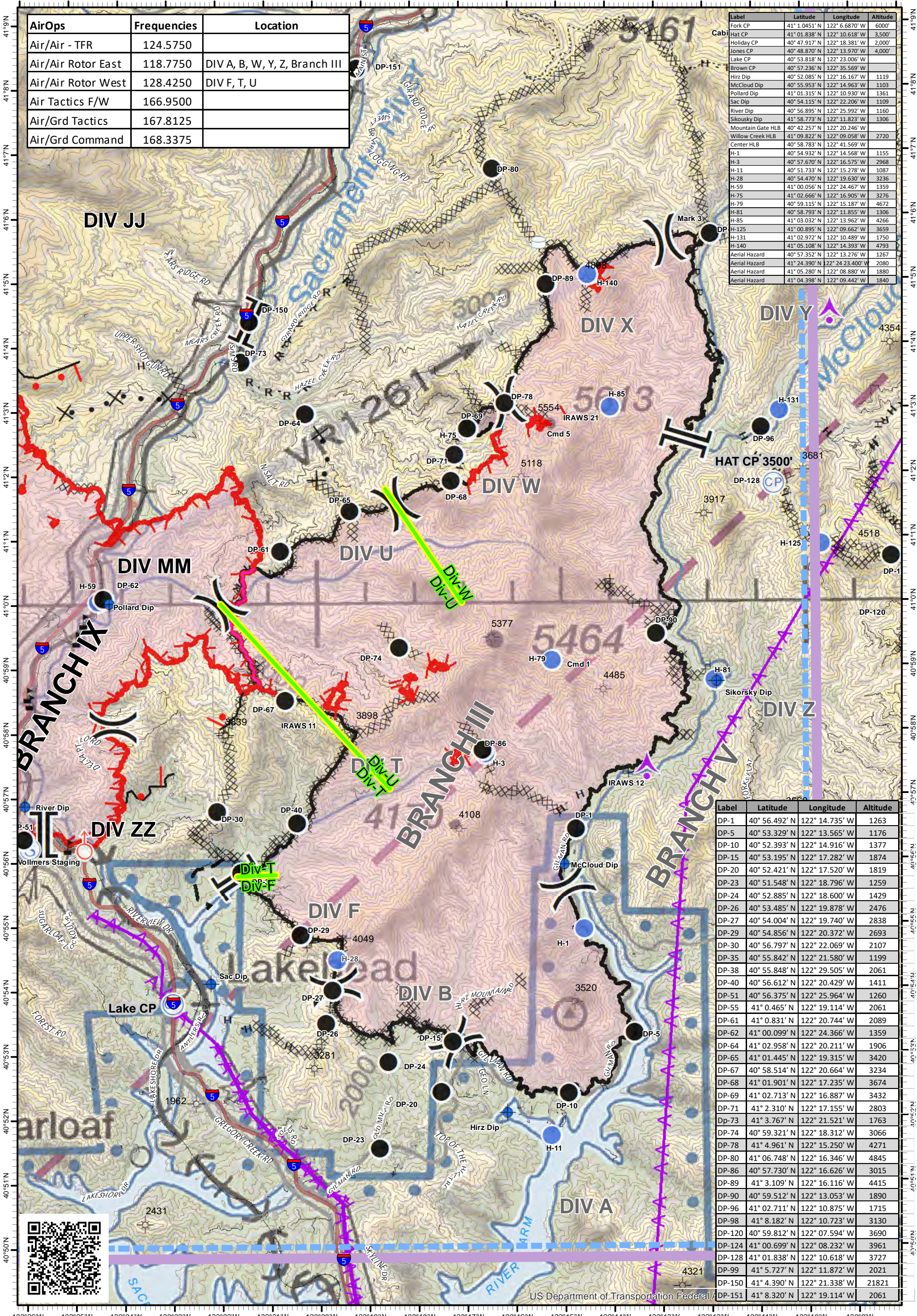
Delta Fire
Pilot Map
 CA-SHF-1223
 September 9, 2018
 40,580 Acres
 Fire Perimeter as of 9/8 @ 2200 hrs.

▬ Wildfire Daily Fire Perimeter
▬ Uncontrolled Fire Edge
▬ Completed Line
▬ Completed Dozer Line
H - Completed Hand Line
R - Road as Completed Line
⊥ Active Burnout
X Proposed Dozer Line
— Unknown
▬ Aerial Division Delineator
▬ Transmission Lines
● Helibase
● Helispot
● Spot Fire
● Staging Area
● Value at Risk
● Dip Site
● Drop Point
⊕ Division Break
⊕ Branch Break
⊕ Check Point

TFR
 MSL 9,000'
 1 0.5 0 1
 Mile
 1:125,000 NAD 83
 200' Contours



122°26'W 122°25'W 122°24'W 122°23'W 122°22'W 122°21'W 122°20'W 122°19'W 122°18'W 122°17'W 122°16'W 122°15'W 122°14'W 122°13'W 122°12'W 122°11'W 122°10'W 122°9'W 122°8'W



AirOps	Frequencies	Location
Air/Air - TFR	124.5750	
Air/Air Rotor East	118.7750	DIV A, B, W, Y, Z, Branch III
Air/Air Rotor West	128.4250	DIV F, T, U
Air Tactics F/W	166.9500	
Air/Grd Tactics	167.8125	
Air/Grd Command	168.3375	

Label	Latitude	Longitude	Altitude
Fork CP	41° 1.0451' N	122° 6.6870' W	6000'
Hat CP	41° 01.838' N	122° 10.618' W	3500'
Holiday CP	40° 47.917' N	122° 18.381' W	2000'
Jones CP	40° 48.870' N	122° 13.970' W	4,000'
Lake CP	40° 53.818' N	122° 23.006' W	
Brown CP	40° 57.236' N	122° 35.569' W	
Hirz Dip	40° 52.085' N	122° 16.167' W	1119'
McCloud Dip	40° 55.953' N	122° 14.963' W	1103'
Pollard Dip	41° 01.315' N	122° 10.930' W	1361'
Sac Dip	40° 54.115' N	122° 22.206' W	1109'
River Dip	40° 56.895' N	122° 25.992' W	1160'
Sikowsky Dip	41° 58.773' N	122° 11.823' W	1306'
Mountain Gate HLB	40° 42.257' N	122° 20.246' W	
Willow Creek HLB	41° 09.822' N	122° 09.058' W	2720'
Center HLB	40° 58.783' N	122° 41.569' W	
H-1	40° 54.932' N	122° 14.568' W	1155'
H-3	40° 57.670' N	122° 16.575' W	2968'
H-11	40° 51.733' N	122° 15.278' W	1087'
H-28	40° 54.470' N	122° 19.630' W	3236'
H-59	41° 00.056' N	122° 24.467' W	1359'
H-75	41° 02.666' N	122° 16.905' W	3276'
H-79	40° 59.115' N	122° 15.187' W	4672'
H-81	40° 58.793' N	122° 11.855' W	1306'
H-85	41° 03.032' N	122° 13.962' W	4266'
H-125	41° 00.895' N	122° 09.662' W	3659'
H-131	41° 02.972' N	122° 10.489' W	1750'
H-140	41° 05.108' N	122° 14.393' W	4793'
Aerial Hazard	40° 57.352' N	122° 13.276' W	1267'
Aerial Hazard	41° 24.390' N	122° 24.240' W	2080'
Aerial Hazard	41° 05.280' N	122° 08.880' W	1880'
Aerial Hazard	41° 04.398' N	122° 09.442' W	1840'

Label	Latitude	Longitude	Altitude
DP-1	40° 56.492' N	122° 14.735' W	1263'
DP-5	40° 53.329' N	122° 13.565' W	1176'
DP-10	40° 52.393' N	122° 14.916' W	1377'
DP-15	40° 53.195' N	122° 17.282' W	1874'
DP-20	40° 52.421' N	122° 17.520' W	1819'
DP-23	40° 51.548' N	122° 18.796' W	1259'
DP-24	40° 52.885' N	122° 18.600' W	1429'
DP-26	40° 53.485' N	122° 19.878' W	2476'
DP-27	40° 54.004' N	122° 19.740' W	2838'
DP-29	40° 54.856' N	122° 20.372' W	2693'
DP-30	40° 56.797' N	122° 22.069' W	2107'
DP-35	40° 55.842' N	122° 21.580' W	1199'
DP-38	40° 55.848' N	122° 29.505' W	2061'
DP-40	40° 56.612' N	122° 20.429' W	1411'
DP-51	40° 56.375' N	122° 25.964' W	1260'
DP-55	41° 0.465' N	122° 19.114' W	2061'
DP-61	41° 0.831' N	122° 20.744' W	2089'
DP-62	41° 00.099' N	122° 24.366' W	1359'
DP-64	41° 02.958' N	122° 20.211' W	1906'
DP-65	41° 01.445' N	122° 19.315' W	3420'
DP-67	40° 58.514' N	122° 20.664' W	3234'
DP-68	41° 01.901' N	122° 17.235' W	3674'
DP-69	41° 02.713' N	122° 16.887' W	3432'
DP-71	41° 2.310' N	122° 17.155' W	2803'
DP-73	41° 3.767' N	122° 21.521' W	1763'
DP-74	40° 59.321' N	122° 18.312' W	3066'
DP-78	41° 4.961' N	122° 15.250' W	4271'
DP-80	41° 06.748' N	122° 16.346' W	4845'
DP-86	40° 57.730' N	122° 16.626' W	3015'
DP-89	41° 3.109' N	122° 16.116' W	4415'
DP-90	40° 59.512' N	122° 13.053' W	1890'
DP-96	41° 02.711' N	122° 10.875' W	1715'
DP-98	41° 8.182' N	122° 10.723' W	3130'
DP-120	40° 59.812' N	122° 07.594' W	3690'
DP-124	41° 00.699' N	122° 08.232' W	3961'
DP-128	41° 01.838' N	122° 10.618' W	3727'
DP-99	41° 5.727' N	122° 11.872' W	2021'
DP-150	41° 4.390' N	122° 21.338' W	21821'
DP-151	41° 8.320' N	122° 19.114' W	2061'

Hirz Fire Pilot Map
 CA-SHF-1223
 September 9, 2018
 46,150 Acres
 Fire Perimeter as of 9/5 @ 0130 hrs.

▬ Wildfire Daily Fire Perimeter
▬ Uncontrolled Fire Edge
▬ Completed Line
▬ Completed Dozer Line
▬ Active Burnout
▬ Proposed Dozer Line
▬ Unknown
▬ Aerial Division Delineator
▬ Transmission Lines
▬ Aerial Hazard
▬ Dip Site
● Drop Point
● Helispot
● Spot Fire
● Staging Area
● Value at Risk
) Division Break
) Branch Break
● Check Point
● TFR



 1 0.5 0 1
 Mile
 1:100,000 NAD 83
 200' Contours

