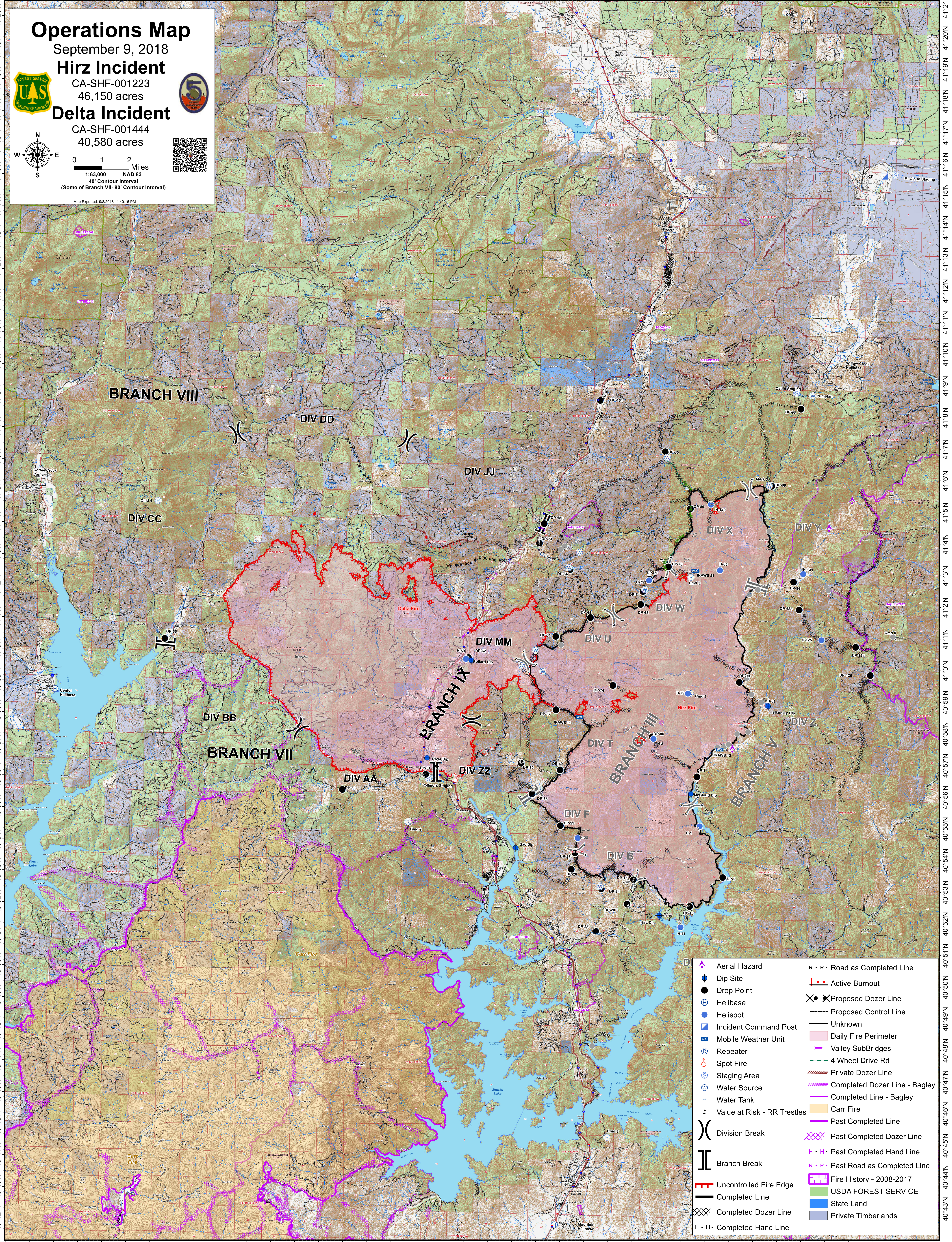


122°44'W 122°42'W 122°40'W 122°38'W 122°36'W 122°34'W 122°32'W 122°30'W 122°28'W 122°26'W 122°24'W 122°22'W 122°20'W 122°18'W 122°16'W 122°14'W 122°12'W 122°10'W 122°8'W 122°6'W



Operations Map

September 9, 2018

Hirz Incident

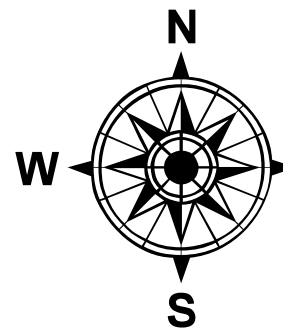
CA-SHF-001223

46,150 acres

Delta Incident

CA-SHF-001444

40,580 acres



0 1 2 Miles

1:63,000 NAD 83

40' Contour Interval
(Some of Branch VII - 80' Contour Interval)

Map Exported: 9/9/2018 11:40:16 PM

	Aerial Hazard		R - R - Road as Completed Line
	Dip Site		Active Burnout
	Drop Point		Proposed Dozer Line
	Helibase		Proposed Control Line
	Helispot		Unknown
	Incident Command Post		Daily Fire Perimeter
	Mobile Weather Unit		Valley SubBridges
	Repeater		4 Wheel Drive Rd
	Spot Fire		Private Dozer Line
	Staging Area		Completed Dozer Line - Bagley
	Water Source		Completed Line - Bagley
	Water Tank		Carr Fire
	Value at Risk - RR Trestles		Past Completed Line
	Division Break		Past Completed Dozer Line
	Branch Break		Past Completed Hand Line
	Uncontrolled Fire Edge		Past Road as Completed Line
	Completed Line		Fire History - 2008-2017
	Completed Dozer Line		USDA FOREST SERVICE
	Completed Hand Line		State Land
			Private Timberlands