

122°44'W 122°42'W 122°40'W 122°38'W 122°36'W 122°34'W 122°32'W 122°30'W 122°28'W 122°26'W 122°24'W 122°22'W 122°20'W 122°18'W 122°16'W 122°14'W 122°12'W 122°11'W 122°10'W 122°9'W 122°8'W 122°7'W 122°6'W



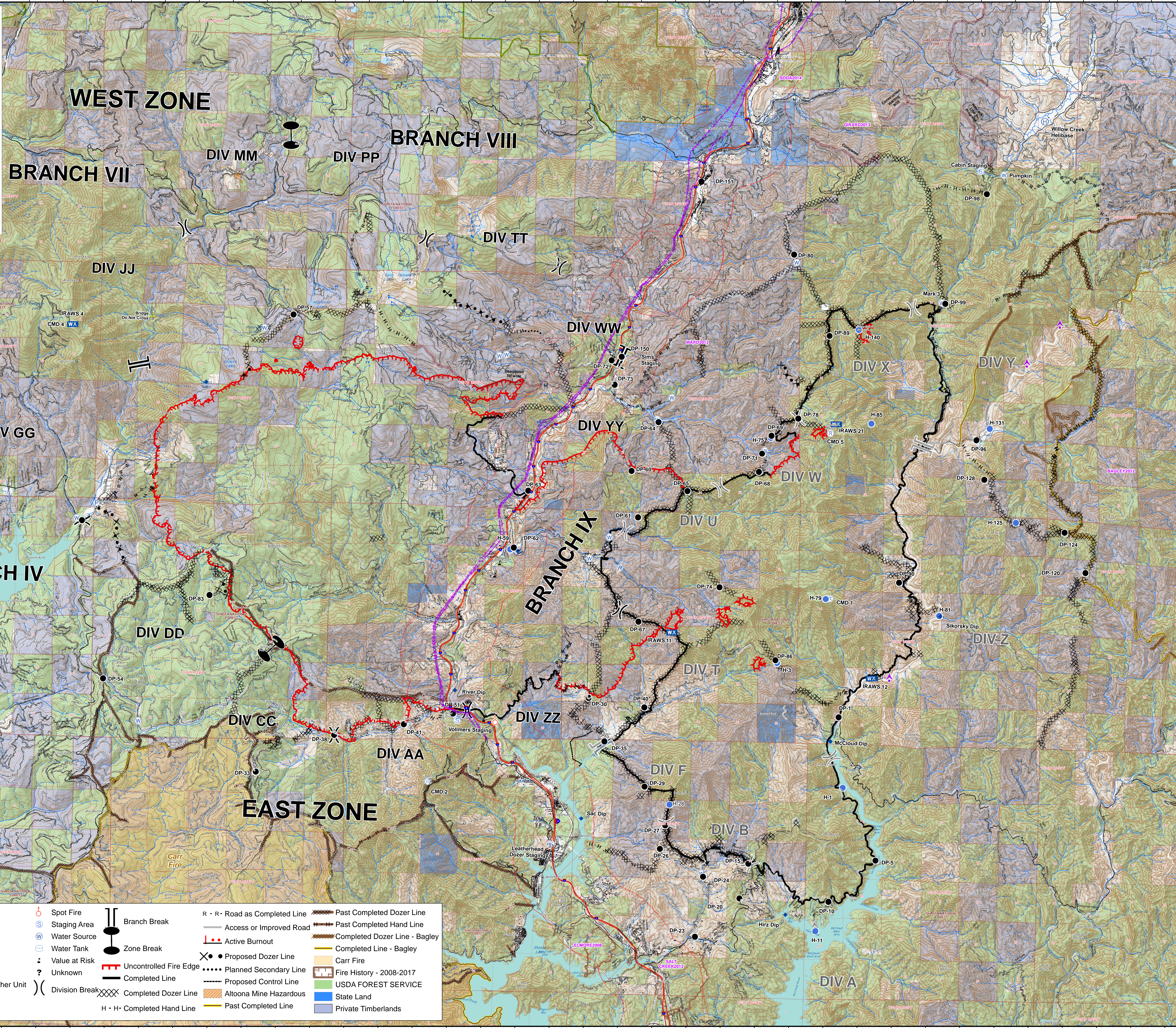
Operations Map

Delta / Hirz Incidents

CA-SHF-001444
September 12, 2018



1:48,000 NAD 83
40' Contour Interval

Communication Infrastructure	Camp	Spot Fire	Branch Break	R - R - Road as Completed Line	Past Completed Dozer Line
Transmission Lines	Closure	Staging Area	Zone Break	Access or Improved Road	Past Completed Hand Line
Valley SubBridges	Dip Site	Water Source	Uncontrolled Fire Edge	Active Burnout	Completed Dozer Line - Bagley
Private Dozer Line	Drop Point	Water Tank	Completed Line	Proposed Dozer Line	Completed Line - Bagley
Aerial Hazard	Helibase	Value at Risk	Carr Fire	Planned Secondary Line	Fire History - 2008-2017
Division Break - Hirz	Helispot	Unknown	USDA FOREST SERVICE	Proposed Control Line	State Land
Branch Break - Hirz	Mobile Weather Unit	Division Break	Altoona Mine Hazardous	Completed Dozer Line	Private Timberlands
	Pump	Completed Hand Line	Past Completed Line		
	Repeater				

122°44'W 122°42'W 122°40'W 122°38'W 122°36'W 122°34'W 122°32'W 122°30'W 122°28'W 122°26'W 122°24'W 122°22'W 122°20'W 122°18'W 122°16'W 122°14'W 122°12'W 122°11'W 122°10'W 122°9'W 122°8'W 122°7'W 122°6'W