

Type	Label	Latitude	Longitude	Altitude
Drop Point	DP-1	40° 56.493' N	122° 14.793' W	1263.64
DP-5	40° 53.329' N	122° 13.565' W	1175.88	
DP-10	40° 52.393' N	122° 14.916' W	1377.37	
DP-15	40° 53.195' N	122° 17.282' W	1874.33	
DP-20	40° 54.421' N	122° 17.037' W	1835.24	
DP-23	40° 51.548' N	122° 18.796' W	1258.59	
DP-24	40° 52.885' N	122° 18.600' W	1423.34	
DP-26	40° 53.485' N	122° 19.878' W	2475.92	
DP-27	40° 54.004' N	122° 19.740' W	2857.96	
DP-29	40° 54.850' N	122° 20.972' W	2959.91	
DP-30	40° 56.797' N	122° 22.069' W	2107.13	
DP-33	40° 54.978' N	122° 31.762' N	3757	
DP-35	40° 55.842' N	122° 21.580' W	1199.18	
DP-38	40° 55.948' N	122° 28.205' W	2060.69	
DP-40	40° 56.612' N	122° 20.409' W	1410.91	
DP-41	40° 56.113' N	122° 27.460' W	1360	
DP-51	40° 56.375' N	122° 25.964' W	1260.2	
DP-54	40° 56.960' N	122° 36.813' W	3962	
DP-55	41° 0.665' N	122° 19.147' W	2060.69	
DP-57	41° 5.150' N	122° 30.998' W	5857	
DP-56	41° 4.077' N	122° 28.442' W	5929	
DP-58	41° 9.833' N	122° 26.813' W	5450	
DP-60	41° 5.858' N	122° 16.807' W	3144	
DP-61	41° 0.831' N	122° 20.744' W	2080.13	
DP-62	41° 00.099' N	122° 24.366' W	1350.44	
DP-63	41° 0.099' N	122° 24.366' W	1640	
DP-64	41° 00.998' N	122° 20.311' W	1906.17	
DP-65	41° 01.465' N	122° 19.515' W	3430.74	
DP-67	40° 58.514' N	122° 20.664' W	3233.72	
DP-68	41° 01.901' N	122° 17.235' W	3674.4	
DP-69	41° 02.713' N	122° 16.887' W	3431.61	
DP-71	41° 2.310' N	122° 17.555' W	2802.9	
DP-72	41° 4.308' N	122° 21.627' W	1880	
DP-73	41° 3.767' N	122° 21.521' W	1763.27	
DP-74	40° 59.321' N	122° 18.512' W	3066.19	
DP-76	41° 5.858' N	122° 16.807' W	3144	
DP-80	41° 06.740' N	122° 16.340' W	4845.35	
DP-85	40° 59.053' N	122° 35.020' W	4731	
DP-83	40° 58.873' N	122° 33.205' W	4740	
DP-86	40° 57.780' N	122° 16.807' W	3013.13	
DP-89	41° 3.109' N	122° 16.116' W	4414.72	
DP-90	40° 59.512' N	122° 13.053' W	1880.34	
DP-96	41° 02.713' N	122° 10.875' W	1714.58	
DP-98	41° 8.182' N	122° 10.723' W	3130.49	
DP-99	41° 5.227' N	122° 11.872' W	2020.69	
DP-120	40° 59.812' N	122° 07.594' W	3860.62	
DP-124	41° 00.699' N	122° 08.232' W	3960.7	
DP-128	41° 01.838' N	122° 10.618' W	3726.69	
DP-150	41° 3.900' N	122° 21.338' W	2182	
DP-151	41° 8.320' N	122° 19.114' W	2060.69	

PROGRESSION

Transportation Map

Delta Fire

CA-SHF-001444

09/17/2018



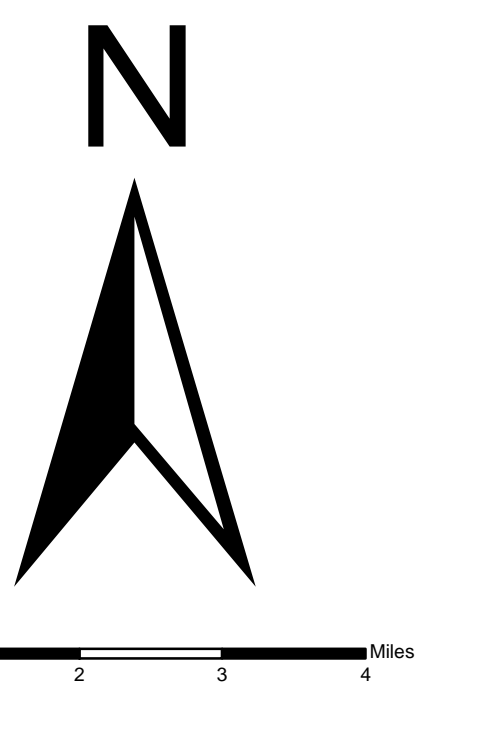
Directions from ICP to Coffee Creek Camp

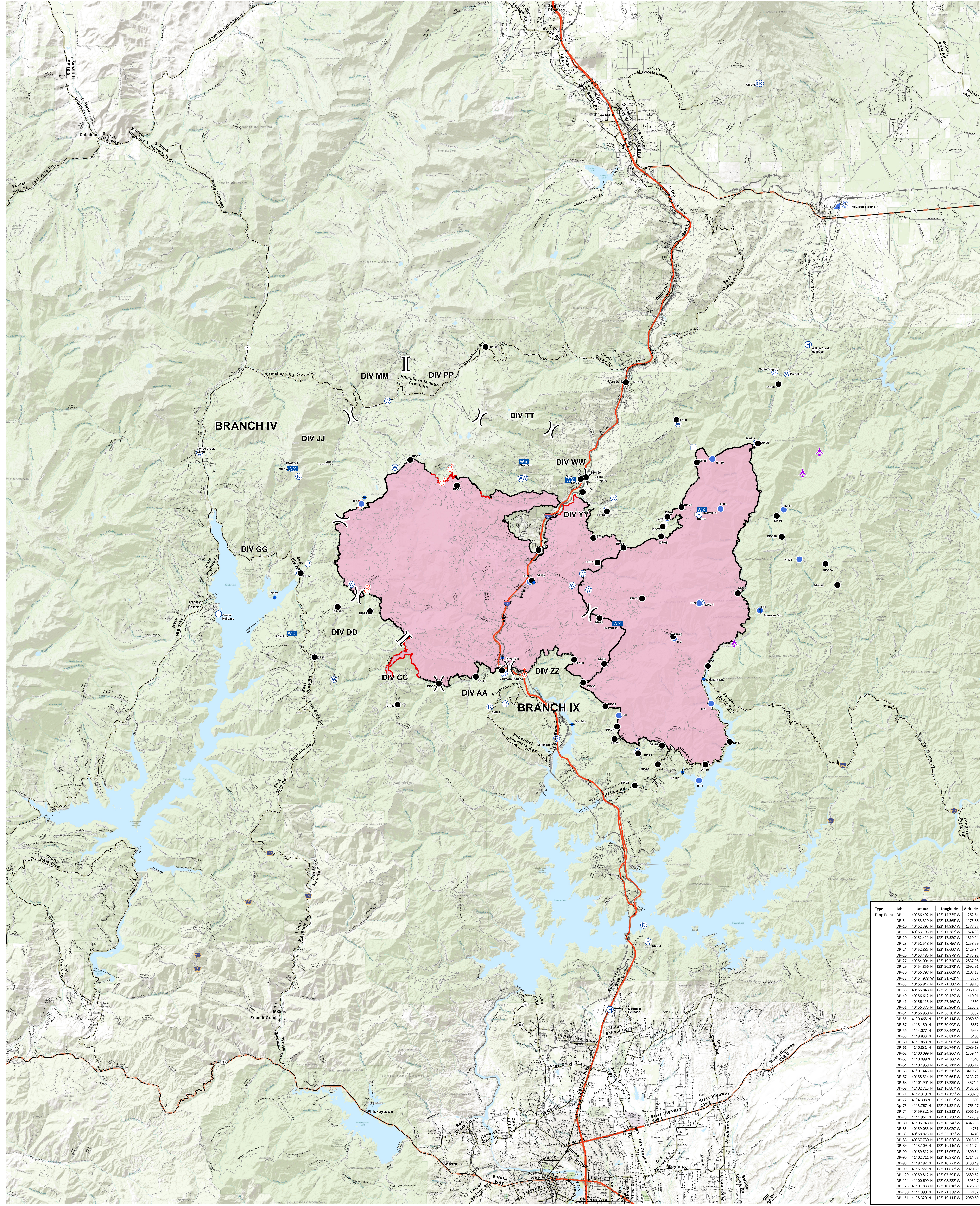
- Depart CA-89 toward Modoc Ave - 9.3 mi
- Take ramp right for I-5 North toward Portland - 14.0 mi, 12 min
- At exit 751, take ramp right toward Edgewood/Gazelle/Stewart Springs Rd - 0.2 mi
- Turn left toward Old Highway 99 S - 0.2 mi
- Turn right onto Old Highway 99 S - 7.3 mi
- Turn left onto Gazelle Callahan Rd - 24.9 mi, 27 min
- Turn left onto CA-3 / S CA-3 - 23.6 mi, 26 min
- Turn right onto Coffee Creek Rd

Staging Area	NAD83	W122°	W122°
Staging Area N41° 8.691'	W122° 10.933'		
Staging Area N40° 56.330'	W122° 25.902'		
Staging Area N41° 15.642'	W122° 6.972'		
Staging Area N41° 4.390'	W122° 21.338'		
Staging Area N40° 55.530'	W122° 23.065'		

Type	Label	Latitude	Longitude	Altitude
Helibase	Mountain Gate HLB	40° 42.257' N	122° 20.240' W	1155
	Willow Creek HLB	40° 08.627' N	122° 08.058' W	2720
	Centercreek	40° 58.781' N	122° 14.567' W	

Type	Label	Latitude	Longitude	Altitude
Helipoint	H-1	40° 54.932' N	122° 14.567' W	1155
	H-3	40° 57.632' N	122° 16.575' W	2668
	H-11	40° 53.718' N	122° 13.726' W	1087
	H-28	40° 54.430' N	122° 18.630' W	816
	H-38	40° 3.345' N	122° 18.607' W	1124
	H-59	41° 00.706' N	122° 16.407' W	1359
	H-75	41° 03.668' N	122° 16.905' W	3276
	H-78	40° 59.157' N	122° 11.887' W	4673
	H-81	40° 58.793' N	122° 11.855' W	1806
	H-85	41° 03.012' N	122° 15.962' W	4266
	H-132	41° 03.897' N	122° 09.640' W	3659
	H-133	41° 02.972' N	122° 10.489' W	1750
	H-140	41° 05.108' N	122° 14.593' W	4763





Type	Label	Latitude	Longitude	Altitude
Drop Point	DP-1	40° 56.493' N	122° 14.793' W	1262.64
DP-5	40° 53.329' N	122° 13.565' W	1175.88	
DP-10	40° 52.393' N	122° 14.916' W	1377.37	
DP-15	40° 53.195' N	122° 17.282' W	1874.33	
DP-20	40° 54.421' N	122° 17.037' W	1835.24	
DP-23	40° 51.548' N	122° 18.796' W	1258.59	
DP-24	40° 52.885' N	122° 18.600' W	1423.34	
DP-26	40° 53.485' N	122° 19.878' W	2475.92	
DP-27	40° 54.004' N	122° 19.740' W	2857.96	
DP-29	40° 54.850' N	122° 20.972' W	2959.91	
DP-30	40° 56.797' N	122° 22.069' W	2107.13	
DP-33	40° 54.978' N	122° 31.762' N	3757	
DP-35	40° 55.842' N	122° 21.580' W	1199.18	
DP-38	40° 55.948' N	122° 28.205' W	2060.69	
DP-40	40° 56.612' N	122° 20.409' W	1410.91	
DP-41	40° 56.113' N	122° 27.460' W	1360	
DP-51	40° 56.375' N	122° 25.964' W	1260.2	
DP-54	40° 56.960' N	122° 36.813' W	3962	
DP-55	41° 0.665' N	122° 19.147' W	2060.69	
DP-57	41° 1.150' N	122° 30.998' W	5857	
DP-56	41° 4.077' N	122° 28.442' W	5929	
DP-58	41° 9.833' N	122° 26.813' W	5450	
DP-60	41° 1.868' N	122° 16.807' W	3144	
DP-61	41° 0.831' N	122° 20.744' W	2080.13	
DP-62	41° 00.099' N	122° 24.366' W	1350.44	
DP-63	41° 0.099' N	122° 24.366' W	1640	
DP-64	41° 00.998' N	122° 20.311' W	1906.17	
DP-65	41° 01.465' N	122° 19.515' W	3430.74	
DP-67	40° 58.514' N	122° 20.664' W	3233.72	
DP-68	41° 01.901' N	122° 17.235' W	3674.4	
DP-69	41° 02.713' N	122° 16.887' W	3431.61	
DP-71	41° 2.310' N	122° 17.535' W	2802.9	
DP-72	41° 4.308' N	122° 21.627' W	1880	
DP-73	41° 3.767' N	122° 21.521' W	1763.27	
DP-74	40° 59.321' N	122° 18.312' W	3066.19	
DP-76	41° 1.868' N	122° 15.207' W	4230.69	
DP-80	41° 06.740' N	122° 16.340' W	4845.35	
DP-85	40° 59.053' N	122° 35.020' W	4731	
DP-83	40° 58.873' N	122° 33.205' W	4740	
DP-86	40° 57.780' N	122° 16.807' W	3013.13	
DP-89	41° 3.109' N	122° 16.116' W	4414.72	
DP-90	40° 59.512' N	122° 13.053' W	1880.34	
DP-96	41° 02.713' N	122° 10.875' W	1714.58	
DP-98	41° 8.182' N	122° 10.723' W	3130.49	
DP-99	41° 5.227' N	122° 11.817' W	2030.69	
DP-120	40° 59.812' N	122° 07.594' W	3860.62	
DP-124	41° 00.699' N	122° 08.232' W	3960.7	
DP-128	41° 01.838' N	122° 10.618' W	3726.69	
DP-150	41° 1.390' N	122° 21.338' W	2182	
DP-151	41° 8.320' N	122° 19.114' W	2060.69	

PROGRESSION
Transportation Map
 Delta Fire
 CA-SHF-001444
 09/17/2018



Directions from ICP to Coffee Creek Camp

- Depart CA-89 toward Modoc Ave - 9.3 mi
- Take ramp right for I-5 North toward Portland - 14.0 mi, 12 min
- At exit 751, take ramp right toward Edgewood/Gazelle/Stewart Springs Rd - 0.2 mi
- Turn left toward Old Highway 99 S - 0.2 mi
- Turn right onto Old Highway 99 S - 7.3 mi
- Turn left onto Gazelle Callahan Rd - 24.9 mi, 27 min
- Turn left onto CA-3 / S CA-3 - 23.6 mi, 26 min
- Turn right onto Coffee Creek Rd

Staging Area	NAD83	W122°	W122°
Staging Area N41° 8.691'	W122° 10.933'		
Staging Area N40° 54.330'	W122° 25.902'		
Staging Area N41° 15.642'	W122° 6.972'		
Staging Area N41° 4.390'	W122° 21.338'		
Staging Area N40° 53.530'	W122° 23.065'		

Type	Label	Latitude	Longitude	Altitude
Helibase	Mountain Gate HLB	40° 42.257' N	122° 20.240' W	1155
	Willow Creek HLB	40° 08.627' N	122° 08.058' W	2720
	Centercreek	40° 58.781' N	122° 14.967' W	

Type	Label	Latitude	Longitude	Altitude
Helipoint	H-1	40° 54.932' N	122° 14.568' W	1155
	H-3	40° 57.632' N	122° 16.575' W	2668
	H-11	40° 53.718' N	122° 13.726' W	1087
	H-28	40° 54.430' N	122° 18.630' W	3236
	H-38	40° 3.345' N	122° 18.607' W	1124
	H-39	40° 00.706' N	122° 16.407' W	1359
	H-75	40° 00.666' N	122° 16.905' W	3276
	H-78	40° 59.157' N	122° 11.887' W	4672
	H-81	40° 58.793' N	122° 11.855' W	1806
	H-85	40° 00.012' N	122° 10.962' W	4266
	H-132	40° 00.897' N	122° 09.640' W	3659
	H-133	40° 00.972' N	122° 10.489' W	1750
	H-140	40° 06.108' N	122° 14.333' W	4763

