

INFRARED INTERPRETER'S DAILY LOG

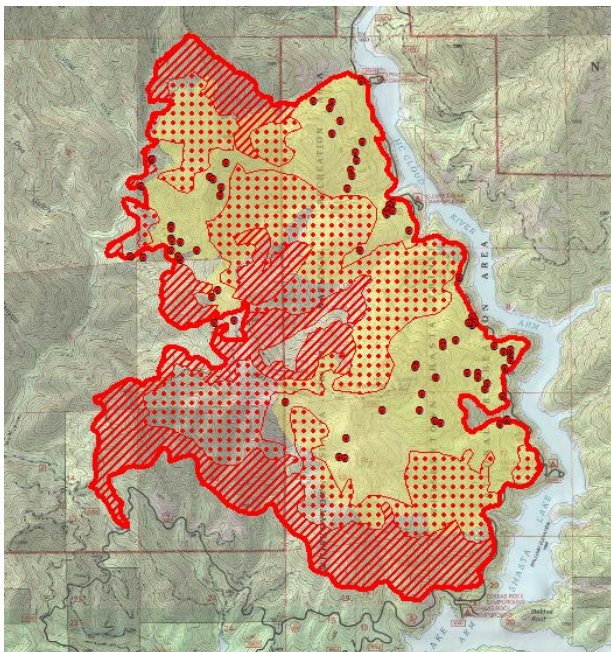
Incident Name: Hirz CA-SHF-001223	IR Interpreter(s): Tina Rotenbury trotenbury@fs.fed.us	Local Dispatch Phone: 530-225-2411	Interpreted Size: 4,404 Acres Growth: 1,831 Acres
Flight Time: 0022 (MDT) Flight Date: 08/13/2018	Interpreter(s) location: Russellville, AR Interpreter(s) Phone: 479-967-8681 (landline) 479-886-0878 (cell)	GACC IR Liaison: Kyle Felker GACC IR Liaison Phone: 530-251-6112	National Coordinator: Jan Johnson National Coord. Phone: 208-387-5900 C: 208-870-5066
Ordered By: Tim Ritchey 530-524-2781 timritchey@fs.fed.us	A Number: A-44	Aircraft/Scanner System: N144Z / Phoenix	Pilots/Techs: Boyce/Netcher/Bayock
IRIN Comments on imagery: 1 pass, Ortho and Color flown in a north-south direction.		Weather at time of flight: Clear	Flight Objective: Identify and map Heat perimeter, Scattered Heat and Isolated Heat Sources.
Date and Time Imagery Received by Interpreter: 08/13/2018 – 0031 (MDT)		Type of media for final product: Shape files, KMZ, PDF, and IRIN Log	
Date and Time Products Delivered to Incident: 08/13/2018 – 0508 (MDT)		Digital files sent to: NIFC FTP @ https://ftp.nifc.gov/public/incident_specific_data/calif_n/!2018_FEDERAL_Incidents/CA-SHF-001223_Hirz/IR	

Comments /notes on tonight's mission and this interpretation:

I started my interpretation with the 08/122018 IR fire perimeter. New growth – 1,831acres. The fire grew mainly to the west and south.

Yellow is 8/12/2018's IR heat perimeter. Red line is current IR heat perimeter.

Perimeter growth: Fire continues to grow to the West & South. There is intense heat as well as scattered heat in this area and some isolated heat sources.



INFRARED INTERPRETER'S DAILY LOG

There is scattered and isolated heat throughout the interior of the fire.

INFRARED INTERPRETER'S DAILY LOG

