

122°19'W

122°18'W

122°17'W

122°16'W

122°15'W

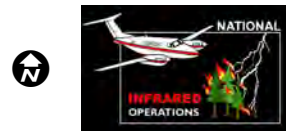
122°14'W

**Infrared Map**  
**Hirz (CA-SHF-001223)**  
**Map Date: 08/17/2018**  
**Imagery Date: 08/17/2018**  
**Imagery Time: 0135 MDT**  
**IR Interpreted Acres: 11,035 acres**  
**IRIN: Tina Rotenbury**

- Isolated Heat Sources
- Heat Perimeter
- Intense Heat
- Scattered Heat

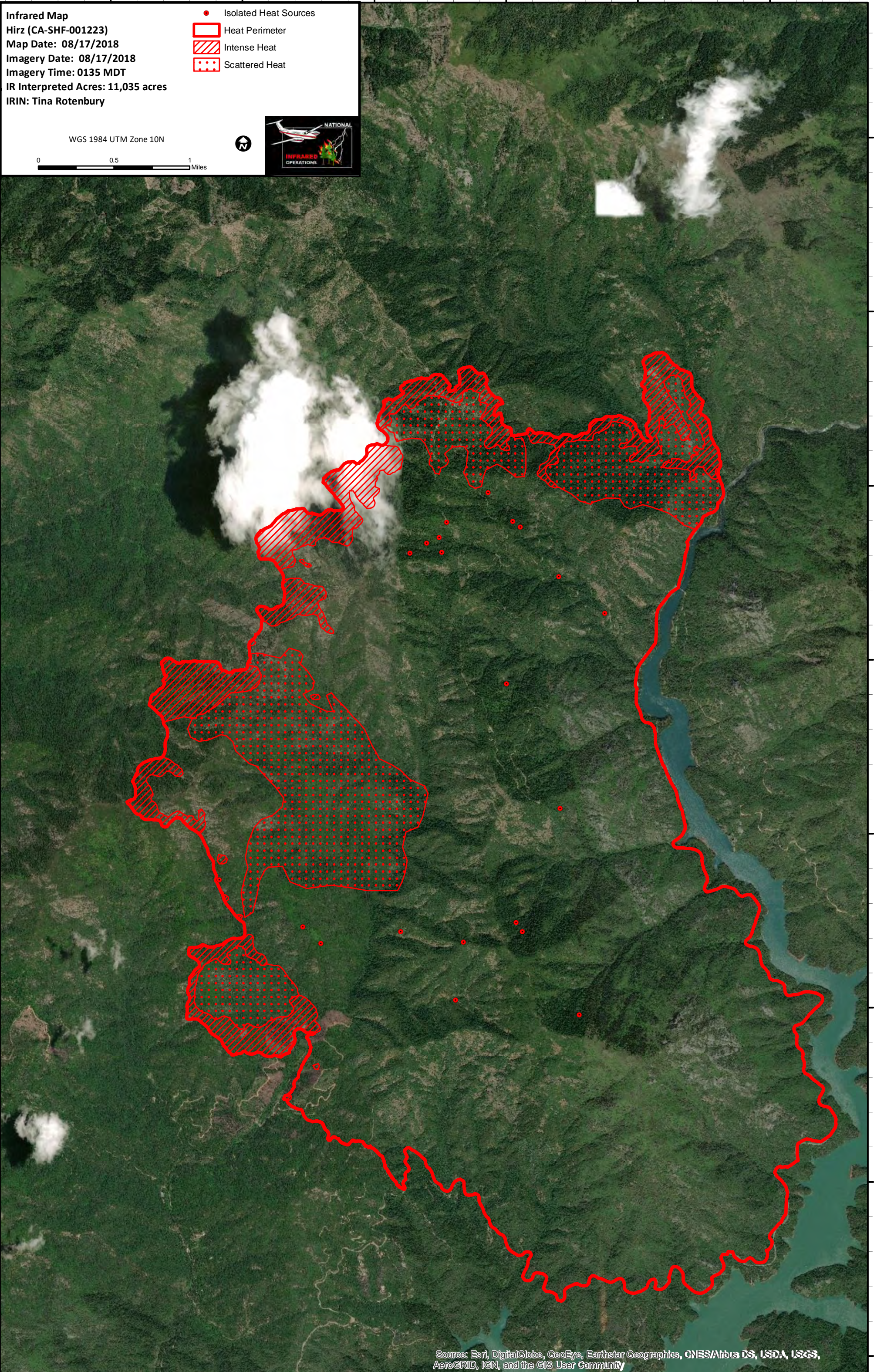
WGS 1984 UTM Zone 10N

0 0.5 1 Miles



40°59'N  
40°58'N  
40°57'N  
40°56'N  
40°55'N  
40°54'N  
40°53'N  
40°52'N

40°59'N  
40°58'N  
40°57'N  
40°56'N  
40°55'N  
40°54'N  
40°53'N  
40°52'N



Source: Esri, DigitalGlobe, GeoEye, Earthstar Geographics, CNES/Airbus DS, USDA, USGS, AeroGRID, IGN, and the GIS User Community

122°19'W

122°18'W

122°17'W

122°16'W

122°15'W

122°14'W