

INFRARED INTERPRETER'S DAILY LOG

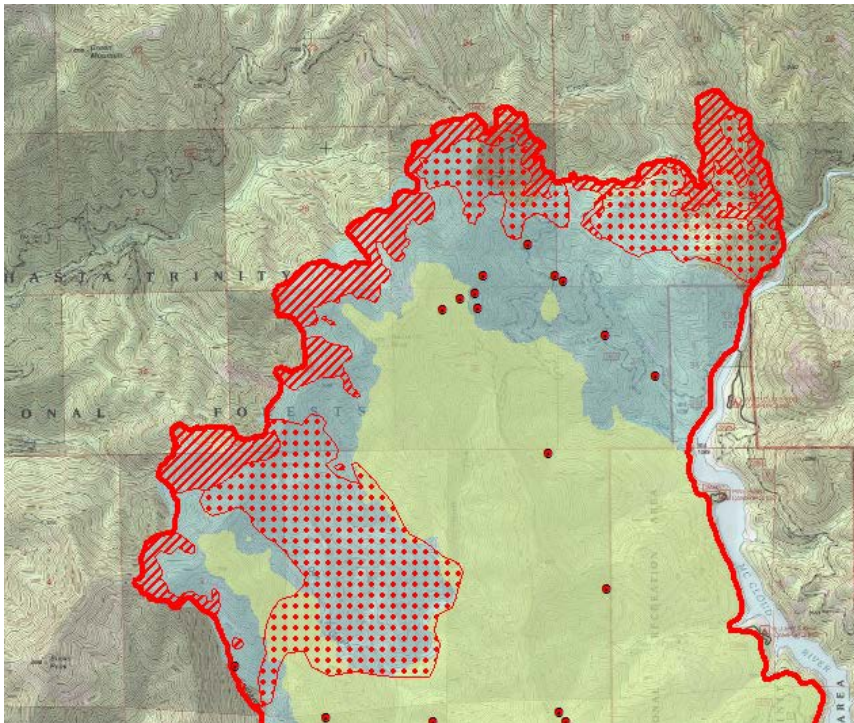
| | | | |
|---|---|---|---|
| Incident Name: Hirz CA-SHF-001223 | IR Interpreter(s): Tina Rotenbury trotenbury@fs.fed.us | Local Dispatch Phone: 530-225-2411 | Interpreted Size: 7,321 Acres Growth: 3,714 Acres |
| Flight Time: 0135 (MDT) Flight Date: 08/17/2018 | Interpreter(s) location: Russellville, AR Interpreter(s) Phone: 479-967-8681 (landline) 479-886-0878 (cell) | GACC IR Liaison: Kyle Felker GACC IR Liaison Phone: 530-251-6112 | National Coordinator: Jan Johnson National Coord. Phone: 208-387-5900 C: 208-870-5066 |
| Ordered By: Tim Ritchey 530-524-2781 timritchey@fs.fed.us | A Number: A-94 | Aircraft/Scanner System: N144Z / Phoenix | Pilots/Techs: Boyce/Netcher/Bayock |
| IRIN Comments on imagery: 1 pass, Ortho and Color flown in a north-south direction. | | Weather at time of flight: Clear | Flight Objective: Identify and map Heat perimeter, Scattered Heat and Isolated Heat Sources. |
| Date and Time Imagery Received by Interpreter: 08/17/2018 – 0145 (MDT) | | Type of media for final product: Shape files, KMZ, PDF, and IRIN Log | |
| Date and Time Products Delivered to Incident: 08/17/2018 – 0241 (MDT) | | Digital files sent to: NIFC FTP @ https://ftp.nifc.gov/public/incident_specific_data/calif_n/!2018_FEDERAL_Incidents/CA-SHF-001223_Hirz/IR | |

Comments /notes on tonight's mission and this interpretation:

I started my interpretation with the 08/16/2018 fire perimeter provided by incident. New growth from previous IR – 3,714 acres. The fire grew mainly to the Northwest and North with a small area of growth to the southwest

Yellow is 8/15/2018's IR heat perimeter. Blue is 8/16/2018 GISS Perimeter. Red line is current IR heat perimeter.

North Perimeter growth: Fire continues to grow to the Northwest, north & south. There is intense heat as well as scattered heat in this area and some isolated heat sources.



INFRARED INTERPRETER'S DAILY LOG

West Perimeter growth: Perimeter growth across Bastard Canyon just north of Matquaw Flat. Intense heat along boundary with scattered heat.



East & South Perimeter growth: East and South perimeter are stable and have cooled down.

Areas of scattered heat on the west and north side of perimeter and a few isolated heat points within the interior.

