

## INFRARED INTERPRETER'S DAILY LOG

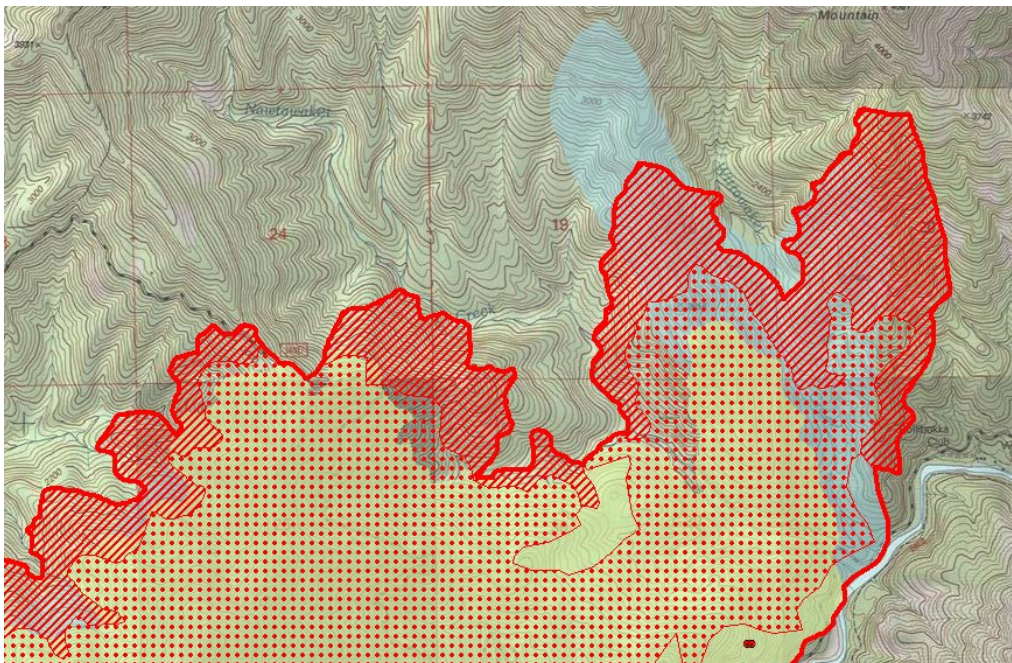
<b>Incident Name:</b> Hirz CA-SHF-001223	<b>IR Interpreter(s):</b> Tina Rotenbury trotenbury@fs.fed.us	<b>Local Dispatch Phone:</b> 530-225-2411	<b>Interpreted Size:</b> 12,550 Acres <b>Growth:</b> 1,515 Acres
<b>Flight Time:</b> 2325 (MDT) <b>Flight Date:</b> 08/17/2018	<b>Interpreter(s) location:</b> Russellville, AR <b>Interpreter(s) Phone:</b> 479-967-8681 (landline) 479-886-0878 (cell)	<b>GACC IR Liaison:</b> Kyle Felker <b>GACC IR Liaison Phone:</b> 530-251-6112	<b>National Coordinator:</b> Jan Johnson <b>National Coord. Phone:</b> 208-387-5900 C: 208-870-5066
<b>Ordered By:</b> Tim Ritchey 530-524-2781 timritchey@fs.fed.us	<b>A Number:</b> A-100	<b>Aircraft/Scanner System:</b> N144Z / Phoenix	<b>Pilots/Techs:</b> Boyce/Netcher/Bayock
<b>IRIN Comments on imagery:</b> 1 pass, Ortho and Color flown in a north-south direction.		<b>Weather at time of flight:</b> Clear	<b>Flight Objective:</b> Identify and map Heat perimeter, Scattered Heat and Isolated Heat Sources.
<b>Date and Time Imagery Received by Interpreter:</b> 08/17/2018 – 2351 (MDT)		<b>Type of media for final product:</b> Shape files, KMZ, PDF, and IRIN Log	
<b>Date and Time Products Delivered to Incident:</b> 08/18/2018 – 0450 (MDT)		<b>Digital files sent to: NIFC FTP @</b> <a href="https://ftp.nifc.gov/public/incident_specific_data/calif_n/2018_FEDERAL_Incidents/CA-SHF-001223_Hirz/IR">https://ftp.nifc.gov/public/incident_specific_data/calif_n/2018_FEDERAL_Incidents/CA-SHF-001223_Hirz/IR</a>	

**Comments /notes on tonight's mission and this interpretation:**

I started my interpretation with the 08/16/2018 fire perimeter provided by incident. New growth from previous IR – 1,515 acres. The fire grew mainly to the Northwest and North with a small area of growth to the southwest

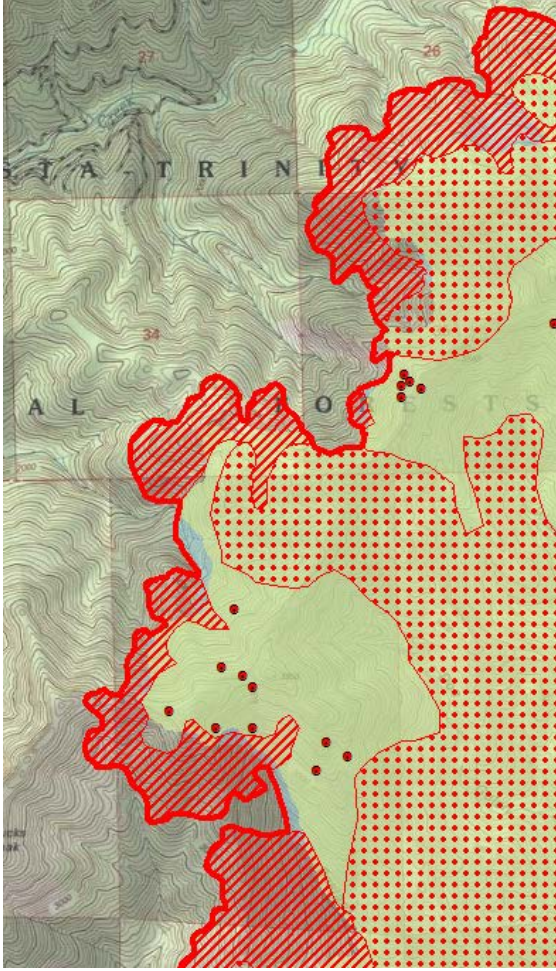
Yellow is 8/17/2018's IR heat perimeter. Blue is 8/16/2018 GISS Perimeter. Red line is current IR heat perimeter.

**North Perimeter growth:** Fire continues to grow to the west and north, up Wittawakei Creek and toward Nawtawaket Mtn. There is intense heat as well as scattered heat in this area and some isolated heat sources.



# INFRARED INTERPRETER'S DAILY LOG

**West Perimeter growth:** Perimeter growth toward Bucks Peak Intense heat along boundary with scattered heat.



**East & South Perimeter growth:** East and South perimeter are stable and have cooled down. Picked up some isolated heat near perimeter on south end near Dekkas Rock Campground.





# INFRARED INTERPRETER'S DAILY LOG

Areas of scattered heat on the west and north side of perimeter and isolated heat points within the interior.

