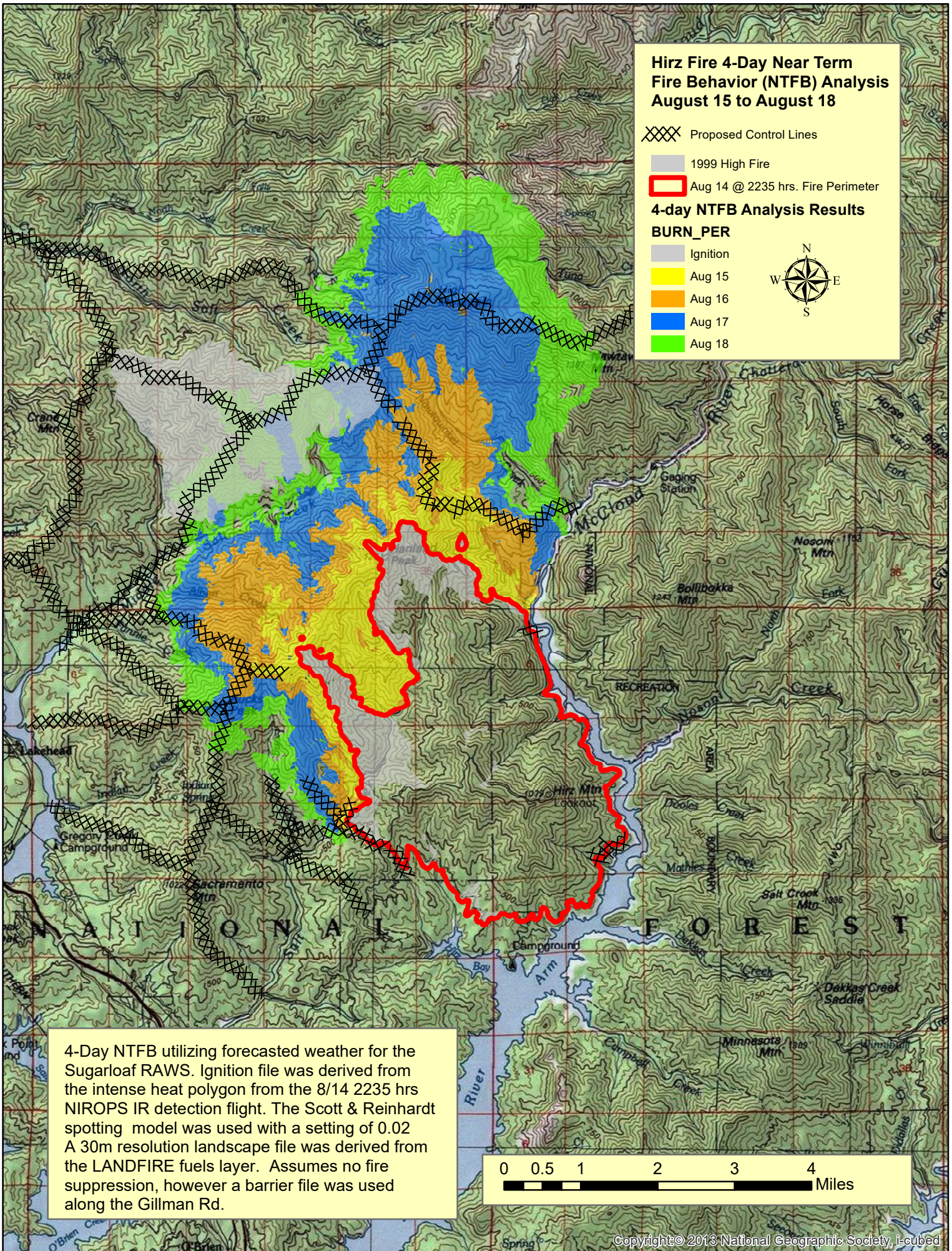
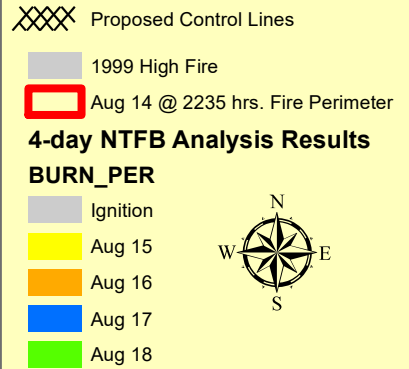


Hirz Fire 4-Day Near Term Fire Behavior (NTFB) Analysis August 15 to August 18



4-Day NTFB utilizing forecasted weather for the Sugarloaf RAWs. Ignition file was derived from the intense heat polygon from the 8/14 2235 hrs NIROPS IR detection flight. The Scott & Reinhardt spotting model was used with a setting of 0.02. A 30m resolution landscape file was derived from the LANDFIRE fuels layer. Assumes no fire suppression, however a barrier file was used along the Gillman Rd.

