

**Hirz Delta Fire**  
**Basin Debris Flow Probability**  
**Peak 15 Minute Rainfall**  
**Intensity of 24 mm/h Rate**  
**Shasta-Trinity National Forest**  
**September 2018**

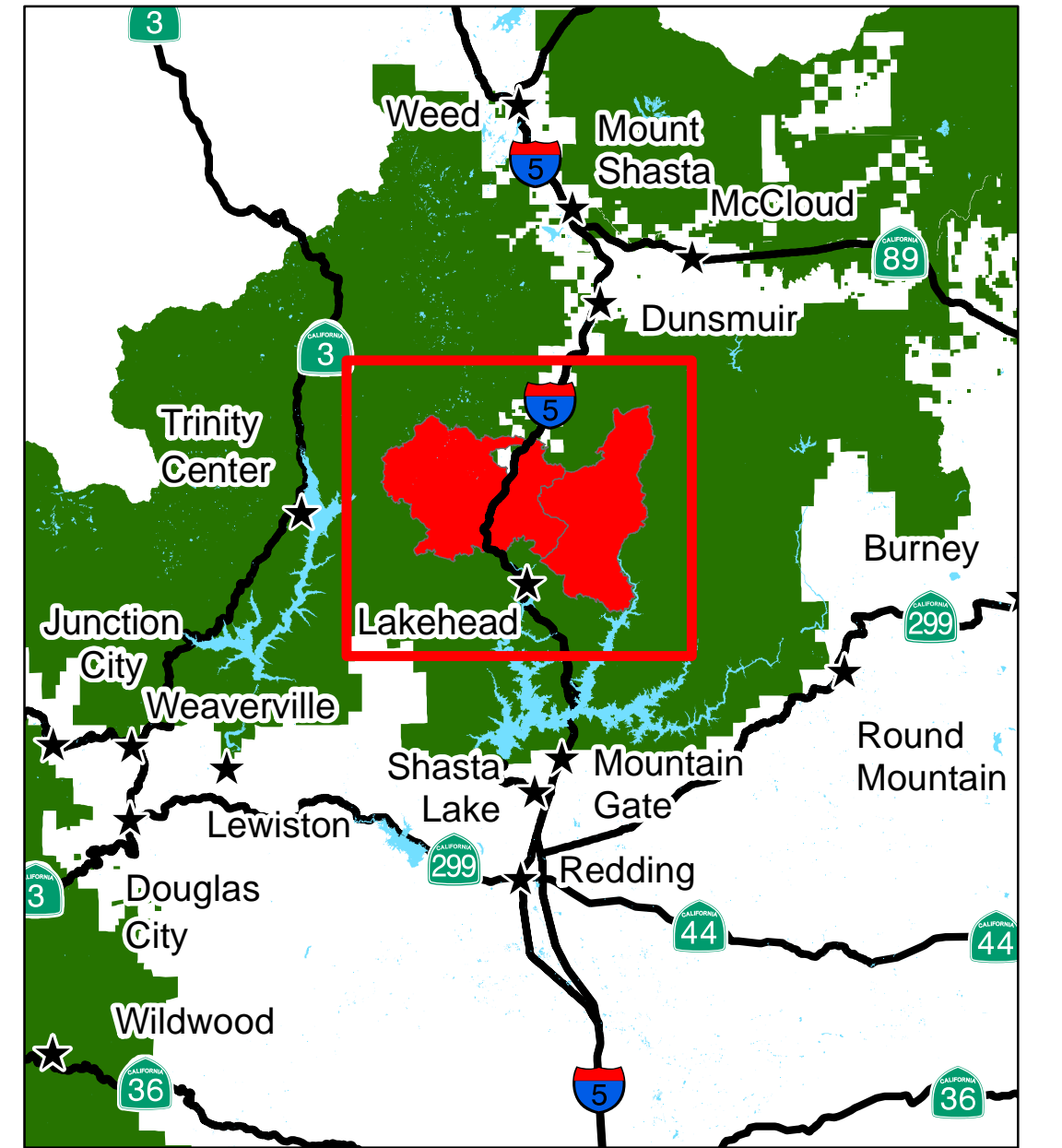
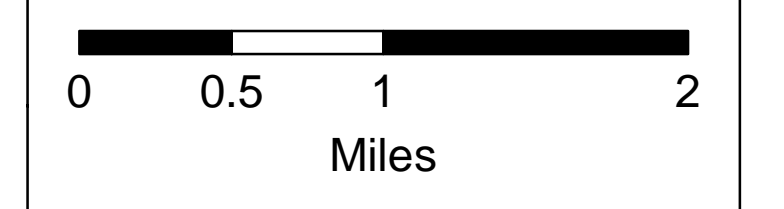
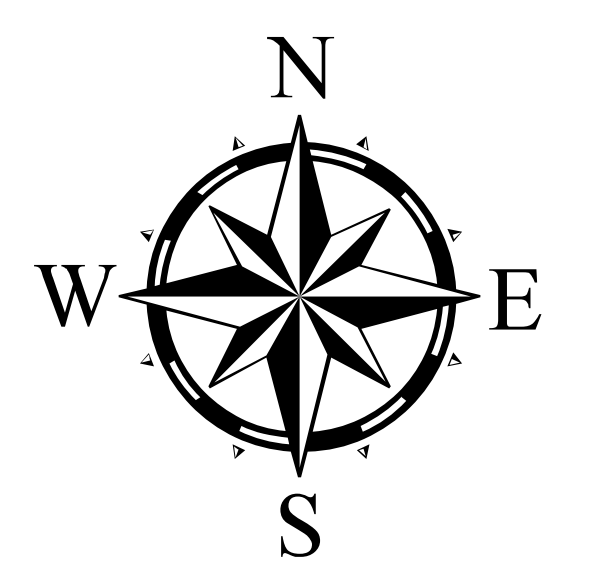


**Legend**

- Town
- ⊛ Peak
- Major Highway
- Perennial Stream
- Water Body
- County Line
- ▨ Forest Service Lands
- ▭ Hirz Delta Fire 2018

**Basin Debris Flow Probability**

- 0-20%
- 20-40%
- 40-60%
- 60-80%
- 80-100%



General risk and probabilities of debris flow, flooding and erosion hazards were evaluated by the US Forest Service BAER Team. Site Specific Risks were not evaluated in this assessment.