

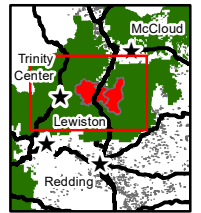
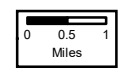
Hirz Delta Fire
 Soil Burn Severity
 Shasta-Trinity National Forest
 September 2018



Legend

- Town
- ⋆ Peak
- Major Highway
- Perennial Stream
- ▭ Tributary
- ▭ Water Body
- ▭ County Line
- ▨ Hirz Delta Fire 2018

- Soil Burn Severity**
- Very Low
 - Low
 - Moderate
 - High



■ Fire Perimeter
 ■ Shasta-Trinity National Forest
 Green risk and probabilities of debris flow, flooding and erosion hazards were evaluated by the US Forest Service BAER Team. Site Specific Risks were not evaluated in this assessment.