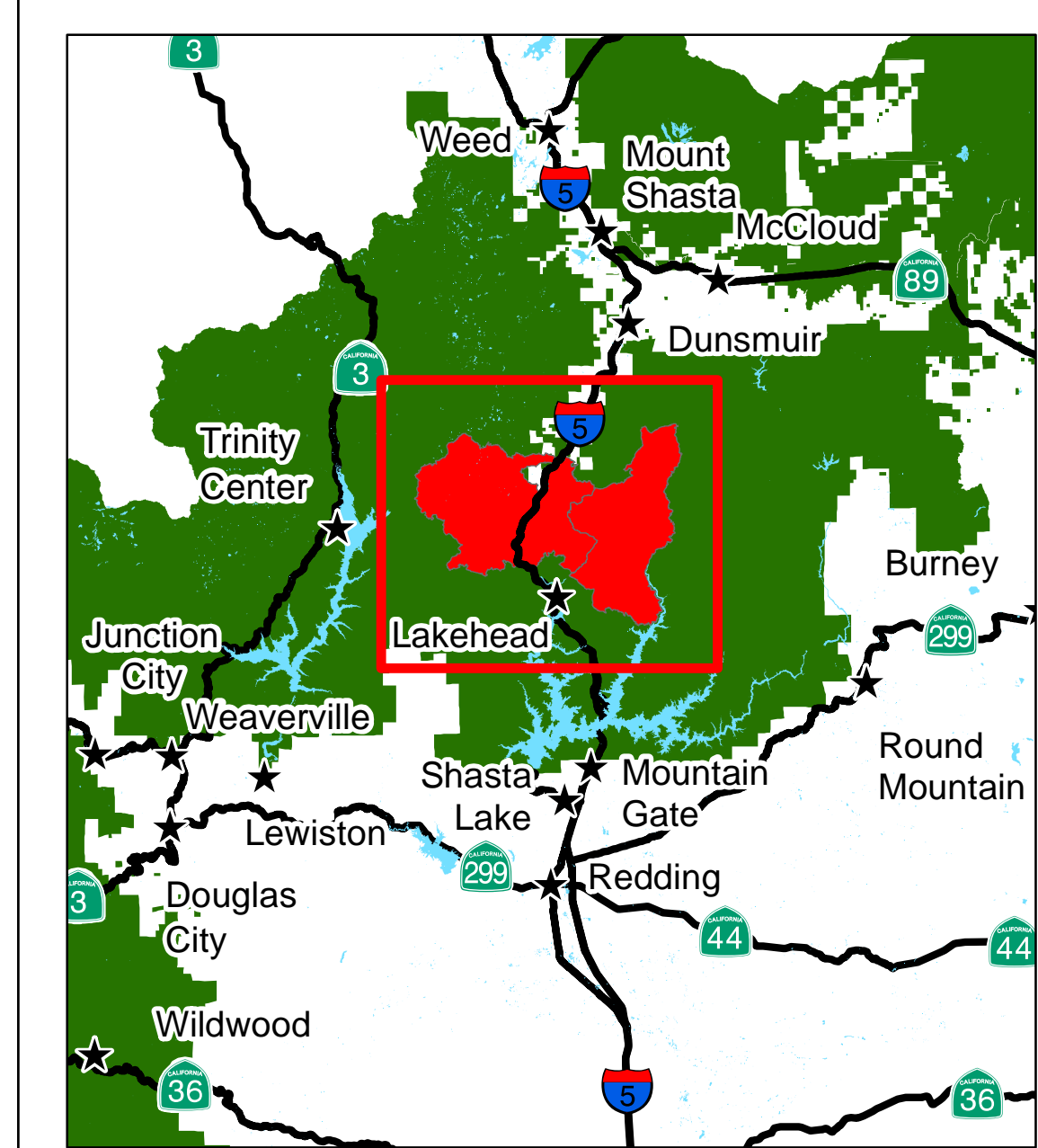
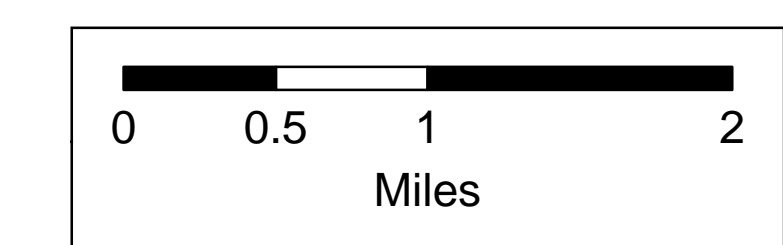
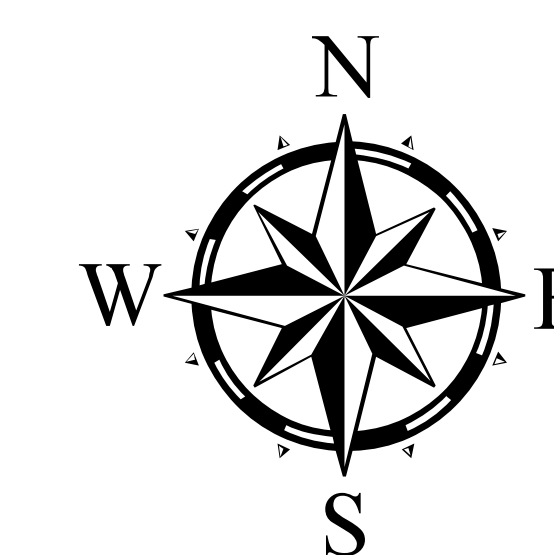


**Hirz Delta Fire**  
**Soil Burn Severity**  
**Shasta-Trinity National Forest**  
**September 2018**



**Legend**

- Town
  - ⊛ Peak
  - Major Highway
  - Perennial Stream
  - Tributary
  - Water Body
  - County Line
  - ▨ Forest Service Lands
  - ▭ Hirz Delta Fire 2018
- Soil Burn Severity**
- Very Low
  - Low
  - Moderate
  - High



General risk and probabilities of debris flow, flooding and erosion hazards were evaluated by the US Forest Service BAER Team. Site Specific Risks were not evaluated in this assessment.

