
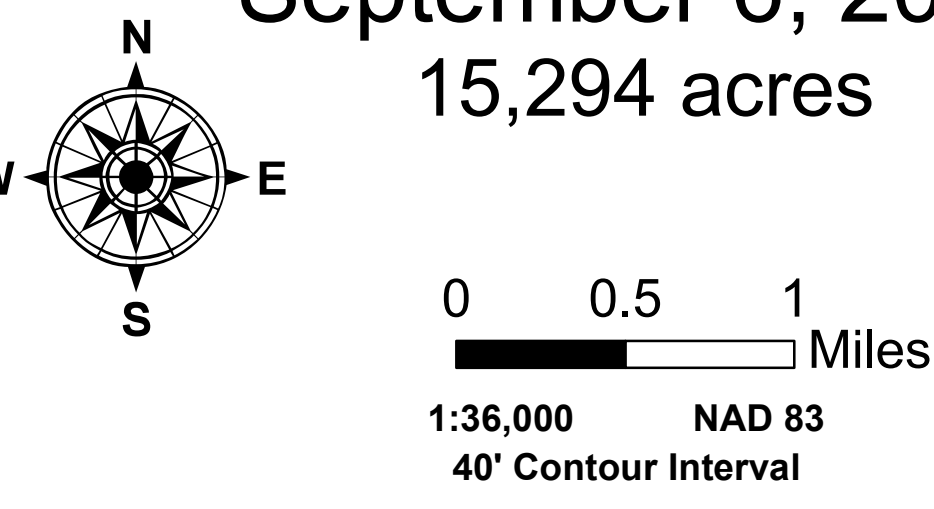


122°39'W 122°38'W 122°37'W 122°36'W 122°35'W 122°34'W 122°33'W 122°32'W 122°31'W 122°30'W 122°29'W 122°28'W 122°27'W 122°26'W 122°25'W 122°24'W 122°23'W 122°22'W 122°21'W 122°20'W 122°19'W 122°18'W


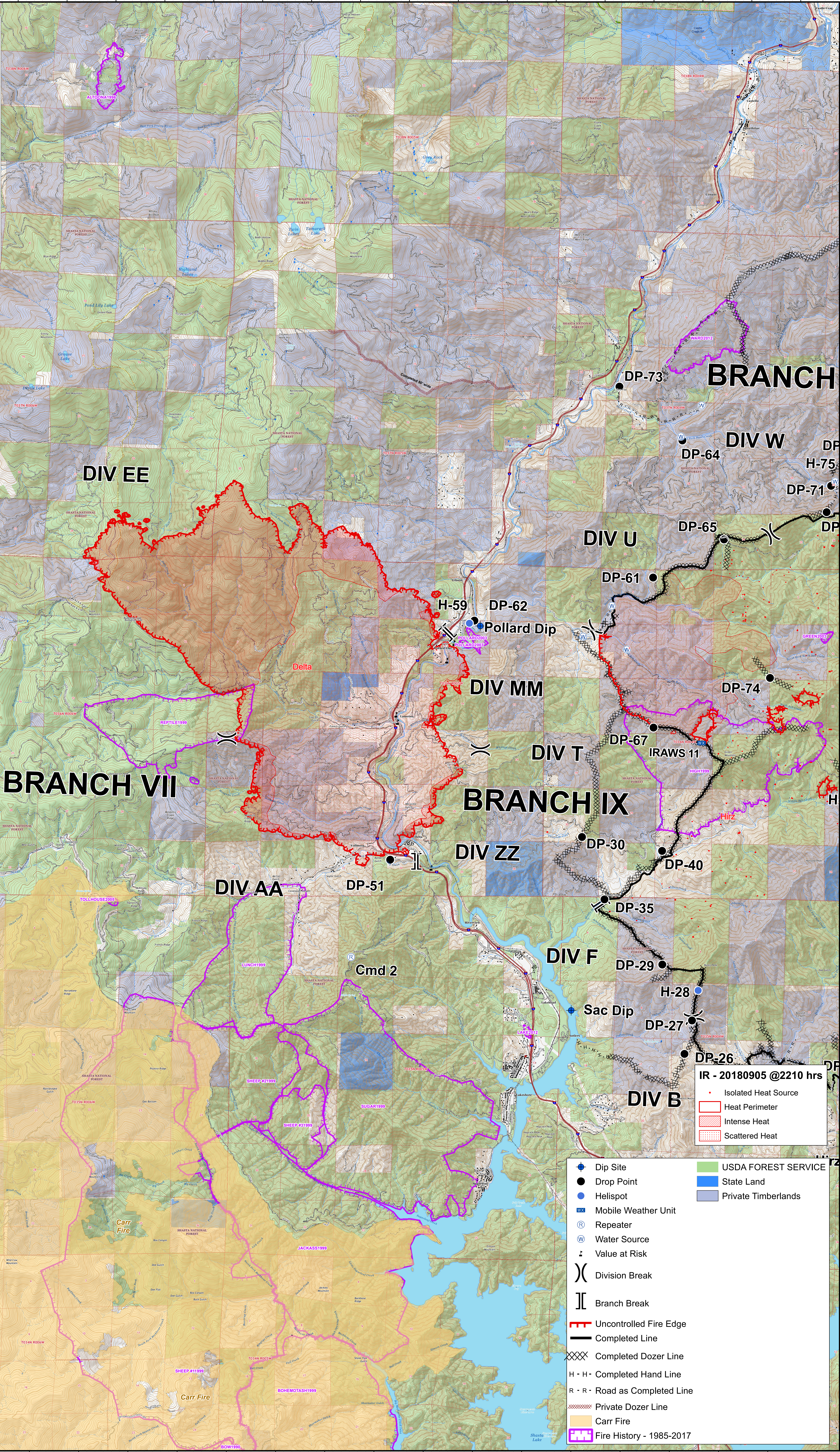


**Ops IR Map**

**Delta**  
CA-SHF-001223  
September 6, 2018  
15,294 acres



0 0.5 1 Miles  
1:36,000 NAD 83  
40' Contour Interval

IR - 20180905 @2210 hrs

- Isolated Heat Source
- Heat Perimeter
- Intense Heat
- Scattered Heat

- Dip Site
- Drop Point
- Helispot
- Mobile Weather Unit
- Repeater
- Water Source
- Value at Risk
- Division Break
- Branch Break
- Uncontrolled Fire Edge
- Completed Line
- Completed Dozer Line
- Completed Hand Line
- R - R - Road as Completed Line
- Private Dozer Line
- Carr Fire
- Fire History - 1985-2017
- USDA FOREST SERVICE
- State Land
- Private Timberlands

122°38'W 122°37'W 122°36'W 122°35'W 122°34'W 122°33'W 122°32'W 122°31'W 122°30'W 122°29'W 122°28'W 122°27'W 122°26'W 122°25'W 122°24'W 122°23'W 122°22'W 122°21'W 122°20'W 122°19'W 122°18'W

41°9'N 41°8'N 41°7'N 41°6'N 41°5'N 41°4'N 41°3'N 41°2'N 41°1'N 41°0'N 40°59'N 40°58'N 40°57'N 40°56'N 40°55'N 40°54'N 40°53'N 40°52'N 40°51'N 40°50'N 40°49'N 40°48'N 40°47'N